



TWINNING CONTRACT

JO 21 ENI ST 01 22

Strengthening the capacity of Jordan's Department of Statistics in terms of compilation, analysis and reporting of statistical data in line with International and European best practices

MISSION REPORT

on

Component 1

Roadmap for the development of an integrated administrative data system in Jordan with pilots on Statistical Business registers (SBR) and population statistics

Activity: 1.2.4:

Introduction and testing of the StatBus System III

Mission carried out by

Mr. Steen Eiberg Jørgensen, Statistics Denmark

Mr. Christian Bendtsen, Statistics Denmark

Mr. Erik Sjøberg, Statistics Norway

Amman, Jordan

03-06 July 2023

Version: 0,1

Strengthening the capacity of Jordan's Department of Statistics

Authors' names, addresses, e-mails

Mr. Steen Eiberg Jørgensen
Deputy Head of Division for Business Data Collection and Registers
Statistics Denmark
Tel: +45 4131 7418
Email: SEJ@dst.dk

Mr. Christian Bendtsen
IT Developer, IT
Statistics Denmark
Tel: +45 5148 6149
Email: CHB@dst.dk

Mr. Erik Sjøberg
Head of the StatBus System
Statistics Norway
Norway
Tel: +47 979 61 887
Email: Erik.Soberg@ssb.no

Strengthening the capacity of Jordan's Department of Statistics

Table of contents

Executive Summary	5
1. General comments.....	6
2. Assessment and results.....	6
3. Conclusions and recommendations	6
Annex 1. Terms of Reference	7
Annex 2: Programme for the mission.....	12
Annex 3. Persons met.....	13

Strengthening the capacity of Jordan's Department of Statistics

List of Abbreviations

Kindly update the abbreviation list

- **SBR** Statistical Business Register
- **LeU** Legal Unit
- **LoU** Local Unit
- **KAU** Kind of activity Unit
- **Ent** Enterprise
- **MIT** Ministry of Trade
- **CCD** Company Controller Department
- **SSC** Social Security Corporation
- **Tax** Income and Tax Department

Strengthening the capacity of Jordan's Department of Statistics

Executive Summary

Only if core text of mission exceeds 4 pages – otherwise delete

Main conclusions and highlights from findings.

1. General comments

This mission report was prepared within the Twinning Project “Strengthening the capacity of Jordan’s Department of Statistics in terms of compilation, analysis and reporting of statistical data in line with International and European best practices”. This was the third activity related to MR 1.2 Pilot project to develop strategy for integrating administrative data sources for the purposes of creating an SBR.

The main purpose of this activity was to introduce and test the StatBus system for its suitability to support an SBR in Jordan.

The following subject will be covered:

- Fixing bugs in the StatBus system;
- Address challenges experienced in DoS;
- Define and set up DoS variables;
- Clean available administrative data
- Upload of full dataset from available administrative data sources
 - The Ministry of Industry and Trade (MIT)
 - Companies Control Department (CCD)
 - Social Security Cooperation data (SSD)
- Clarifying of the sources for SBR and prioritizing
- Introduction and test of functionality of StatBus;

The consultants would like to express their sincere thanks to all officials and individuals met for the kind support and valuable information which they received during the stay in Jordan and which highly facilitated their work. The views and observations stated in this report are those of the consultants and do not necessarily correspond to the views of EU, Statistics Norway or Statistics Denmark.

2. Assessment and results

Fixing bugs in the StatBus system;

Since the first mission, the StatBus system has been updated to a new version and many bugs were removed, but the system is still under development.

Many of the problems first identified as bugs, also turned out to manifest only due to the quality of the data we attempted to upload into the system.

Address challenges experienced in DoS;

Because of the quality of addresses from the administrative sources, it has been decided that the level of Governorates is the geographical address for the moment. The hierarchical structure of Regions in Jordan exists and it is a long term goal for DOS to refine and eventually implement this structure.

Define and set up DoS variables

Strengthening the capacity of Jordan's Department of Statistics

All relevant classifications and code-lists used in StatBus are created and used in the system. Templates for uploading of data is done for MIT, CCD and SSC.

Together with DoS, the experts created detailed templates for the 3 administrative sources that currently are of high enough quality to be reliably used, namely CCD, MIT and SSC. The templates shows a full mapping between the source columns vs. what columns in the StatBus system to save the data. Furthermore, in depth discussions on how to clean and prepare data before upload were held and the results were included in the template document.

At the request of DoS IT, a list of classifications in StatBus has been created. The list includes the classification type, name of the table in the Database and a description of the contents. Furthermore, a classification guide on how to upload classifications was updated to reflect new discoveries.

Several minor quirks in the system has been identified over time as well as a number of available settings. A document has been created to describe these "rules and tips." For example, if attempting to upload an address into the system, a region code (Governorate) MUST also be supplied.

Clean available administrative data

Making the data from MIT ready for upload was a more complex task than anticipated. The source files are badly structured and many fields contains either no data or unusable default values. In addition, most code-lists are written as free text, so variables expected to only have numbers, such as Telephone, could contain other things. If the Jordanian society wants to use administrative data in a more serious way, significant work needs to be done in regards to structure and consistency of the data.

Upload of full dataset from available administrative data sources

- The Ministry of Industry and Trade (MIT)
100.000 out of 620.000 units from MIT were successfully uploaded, therefore it is expected that uploading the rest will produce no issues.
- Companies Control Department (CCD)
A file with 200 units is prepared and tested. All 96.000 units can be uploaded
- Social Security Cooperation data (SSD)
A file with 200 units has been uploaded and have created Units. In the future SSD data must not be used to create Units, but for testing purposes it was valuable approach. If units can be created effortlessly, they can also update effortlessly. In production, SSC is only added value for already existing Units and must never be used to create new units.

Discuss integration with SSC data and survey data

There were discussions between NA, Economic division, Industry division, Quality division, SBR team and the Experts about different aspects regarding Unit types and how to use them.

Strengthening the capacity of Jordan's Department of Statistics

One of the most important topics covered by the Experts, is that DoS should no longer create statistics on the basis of data from establishments. DoS shall aim to use the LeU, also if they need information about Establishment.

The use of SSC data and how it can improve data from the other sources was also discussed.

Introduction and test of functionality of StatBus;

In the mission there was a lesson on posting in StatBus, updates and how to make extracts.

Other issues handled

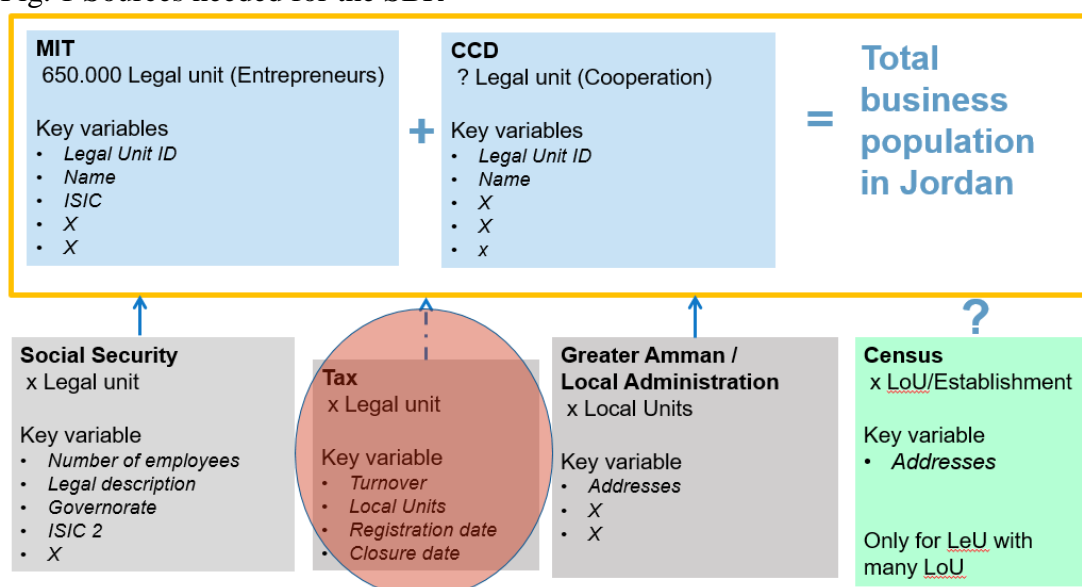
Deliveries and sources

Several productive discussions in regards to sources were held. In total DoS have many sources, see fig. 1, which covers the needs to run a Business Register. The quality of each source has never been analysed in depth. Main issues are missing addresses and the missing structure. It is also critically that the Census doesn't have a relation to the Legal ID in 2023. It will be costly to use it. The recommendation is not to use time on it, if it not can be done automatic.

If the SBR needs to be ran using 5 core sources, the cost to fully run the register will be significant. In these 5 Sources there is also a lot of unknowns to the quality, especially the ISIC code and the address.

If DoS gets access to individual data from the Tax department it can become the only source for creating Units. SSC data will give information about employees. If a good agreement is made, Tax can also deliver information about turnover.

Fig. 1 Sources needed for the SBR

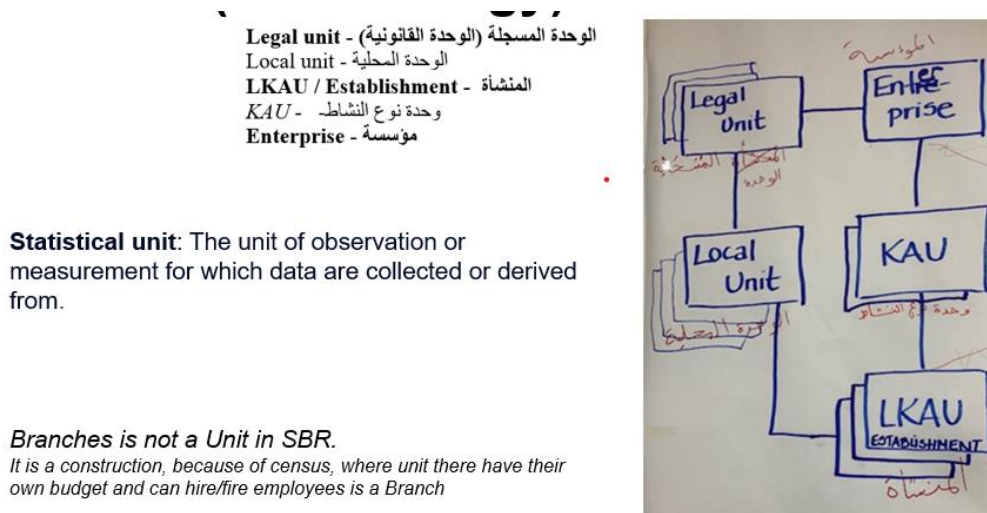


Strengthening the capacity of Jordan's Department of Statistics

Before finalizing the MoUs, there is a need for DoS and the SBR team to get a better view of possible variables in the deliveries. In the long term also work for a common understanding on the need for more structure in the data. Especially there is a need to investigate if SSC can deliver number of employees on LoU level as the naming of the variables "Establishment name" indicates.

Type of Units

Fig. 2 Type of Units in SBR



From the last mission there was an outstanding around Branches and what kind of Unit it is. The Experts got a good description from Mr Mohammad Abdel Razzaq, Director of Economic directorate. We agreed that a Branch is an Establishment and most often the same as Local Unit. But because it is only created if the Establishment has its own budget it is not a Unit. The plan for DoS is also to collect data on the Level of Legal Unit based on register information. That means information about Branches is not needed for the future.

The KAU is a Unit type in SBR for LeU with more than one activity where the Unit has a big influence in the ISIC code. The experts recommend to have focus on the 10-15 largest legal Units to see whether they should create two or more KAUs. In the coming years it can grow to 50 most important LeU. A KAU relates both to the Economic Unit and the Establishment/LoU.

The criteria for creating Establishments is recommended to only be done for the topmost important units.

Ranking of Sources

When the SBR is up and running there is a need for ranking of the sources. What source do we trust the most? If there is more than one source for a variable there is a need to consider if a variable should always be updated, or only if it exists in specific source. It can also have influence on when we updated the Unit. But experience will help to do it the best possible way. In future missions, there must be a focus on updating units in StatBus and using different sources.

Strengthening the capacity of Jordan's Department of Statistics

Fig. 3 Example on Ranking sources about ISIC

Company	MIT	CCD	SSC	SBR Quality
Rank	3		2	1
1	1234		1235	
2	2333		2333	
3	4556		4557	4556
4	3434			
5		X	4546	
6		x	7410	

Census 2024 – Is it needed

DoS have the sources to build up a SBR. A Census will only bring information about the size of the LoU, for LeU with more than one LeU. It looks expensive and maybe the SSC has that information.

The Expert considers it better to investigate in resources for improve quality of data. If the sources available to DoS today are used optimally, there are opportunities to build an ESR of reasonable quality. The two big issues are Addresses and ISIC, and here you should make a commitment to your sources.

A Census can be a help for investigation on the unregistered companies, which will and should not be a part of the SBR.

If DoS wants to build up a Building and Dwelling register together with the Census for Persons a Census can be relevant for that part.

3. Conclusions and recommendations

The next steps is

- More detailed work plan created in week 30
- Analyse quality of data received
- Description of variables
- Meeting with register owners
- Create rules and priorities for all kind of updates - ranking
- Work with identifier of updates in existing units and use the ranking
- Understanding of the SBR
 - What are the benefits of having a database
 - How to work with the quality
 - How to work and update from the screens

Actions needed for moving forward as well as for preparing the next mission –add rows as needed.

Action	Deadline	Responsible person
Upload all data from MIT	2023.07.31	IT
Upload all data from CCD	2023.07.31	IT

Strengthening the capacity of Jordan's Department of Statistics

Update ISIC and number of Employees for the year 2022 with the February (is it the best one?) file from SSC - the template must be set to update units only.	2023.08.31	SBR-team and IT
Investigate the SSC file <ul style="list-style-type: none"> • Is there several establishments related to the National ID • The name from the file is not better quality than the files from MIT/CCD, so it shall not be used for update. <u>But for now</u> it is needed for update because of the StatBus system. • Number of employees can in this version only be loaded as a total employees. Data on foreigners and sex can first be uploaded in version 2.0 • The submission date, do SSC also have information about the period data refers to • What does establishment type refer to. If Legal form does it so refer to the value list.. 	2023.08.15	SBR team
Investigate the MIT file <ul style="list-style-type: none"> • What does REG_DATE, REG_STATUS_DATE, CREATE_DATE, MODIFY_DATE refer to, should one of them be a start_date or do you not receive this, if not do they have one. • What is CN_REG_NO/CN_CODE, can you receive it if it is important 	2023.07.31	SBR team
Investigate the CCD file <ul style="list-style-type: none"> • You receive Company_Number and Establishment_national_ID what is the difference, is it LoU? 	2023.07.31	SBR team
Before MoU is created for all sources <ul style="list-style-type: none"> • Description of all variables received for a common understanding • Knowledge about and opt-in or opt-out of variables in not received today 	2023.08.20	SBR team
Analysis of data from Greater Amman Municipality and The Ministry of Local Administration Register – where do you see issues related to creation and corrections to units	2023.09.15	SBR team and IT

Annex 1. Terms of Reference

Component 1:

Roadmap for the development of an integrated administrative data system in Jordan with pilots on Statistical Business registers (SBR) and population statistics

Activity 1.2.4:

Introduction and testing of the StatBus System III

Dates: 03 – 06 July 2023

Content

List of abbreviations.....	13
0. Objective and Mandatory Results for the component	14
Objective:	14
Mandatory results and indicators for achievement for sub-component 1.2	15
1. Purpose of the activity.....	15
Background information about StatBus:	16
Background information for enhancing SBR at DoS	16
2. Expected output of the activity.....	18
3. Participants.....	18
MS Short Term Experts (STE's).....	18
DoS experts	18
Twinning team.....	18
4. Resources	19
2. Inputting Data.....	19
6. Overall agenda	19

Annex A: Program for the activity

Annex B. Participants

Annex C: Achievements and challenges for building a SBR in Jordan (PowerPoint presentation)

Annex D: Mission report from activity 1.2.3 on installing and testing the StatBus system II
(English and Arabic)

Annex E: UN Guidelines for SBR (English)

Annex F: Methodology document for StatBus (English and Arabic draft)

Annex G: User Manual for StatBus (English and Arabic draft)

List of abbreviations

BC	Beneficiary Country
CoE	Census of Establishments
DoS	Department of Statistics
ESS	European Statistical System
MS	Member State
NA	National Accounts
RTA	Resident Twinning Advisor
SBR	Statistical Business Register
STE	Short Term Expert
ToR	Term of References

Strengthening the capacity of Jordan's Department of Statistics

0. Objective and Mandatory Results for the component

Objective:

To prepare a roadmap for the development of an integrated administrative data system for Jordan, and conduct pilot projects on creating an SBR and strengthening population statistics.

As the development of a fully integrated administrative data system is a long-term project. The main focus of the Twinning project will be on specific pilot projects where the use of administrative records can address key challenges currently faced by the DoS. These pilot projects will constitute the first steps in rolling out a roadmap for the Jordanian statistical system by providing a template for expanding the use of administrative data across the wider statistical system over time. In relation to business statistics specifically, the development of a Statistical Business Register (SBR) it is essential to integrating different data sources, and providing additional analysis without increasing costs.

SBR is an essential component in supporting the coherence, consistency and quality of statistics produced as well as providing data on the population of business units. The SBR provides a basis for selecting and monitoring samples, integrating administrative and other data sources and providing a framework for deriving business demographics and National Accounts.

The lack of a comprehensive SBR was identified as an obstacle to future improvements of DoS statistics back in the 2015 Twinning project led by Statistics Denmark. This gap still remains - developing and maintaining an SBR for Jordan would, therefore, greatly enhance the ability of the DoS to monitor and analyze developments in a rapidly changing business environment. The pilot project will examine available administrative data sources on business entities.

For business statistics, the development of a statistical business register (SBR) is essential to integrating different data sources, and providing additional analysis without increasing costs. It is also the main source of business demography indicators. The lack of an SBR has also been identified as an impediment to improving DoS statistics.

SBRs are an essential component in supporting the coherence, consistency and quality of statistics produced. As well as providing data on the population of business units, the SBR provides a basis for selecting and monitoring samples, integrating administrative and other data sources and providing a framework for deriving business demographics. The lack of a comprehensive business register was identified as an obstacle to future improvements of DoS statistics back in the 2015 Twinning project led by Statistics Denmark. This gap still remains - developing and maintaining an SBR for Jordan would, therefore, greatly enhance the ability of the DoS to monitor and analyse developments in a rapidly changing business environment. The pilot project will examine available administrative data sources on business entities, primarily in the Companies Controller Department and Ministry of Industry and Trade. Based on the mapping exercise in 1.1 above, a strategy for linking these data with DoS information, primarily from the Census of Establishments (CoE), will be drawn up. While specific administrative source data have been identified for the pilot, other information can also be considered.

Strengthening the capacity of Jordan's Department of Statistics

Recently the [Jordan Economic Modernization Vision 2030](#) was launched and “[Smart Jordan](#)” was identified as one of the eight Growth Drivers to implement the Economic Modernization Vision. The ‘Smart Jordan Driver’ includes seven sectors where data is one of them. This indicates the national interest to ensure constant and reliable data sources, and robust statistical systems that contribute to timely and informed policy making.

This specific mission relate to MR 1.2: Pilot project to develop strategy for integrating administrative data sources for creating an SBR. In table 1 the associated indicators are listed.

Mandatory results and indicators for achievement for sub-component 1.2

Table 1: Mandatory results and indicators for achievement (IA) for the sub-component 1.2.

MR from the Twinning Fiche	Indicator
MR 1.2: Pilot project to develop strategy for integrating administrative data sources for the purposes of creating an SBR	<p>Indicator 1.2.A: Administrative data sources identified and assessed and plan developed for integrating these with Census of Establishments (CoE) information in an SBR</p> <p>Indicator 1.2.B: Documentation prepared on database structures and compliance with statistical standards, classifications (e.g. ISIC, Rev 4) etc. and use of common identifiers etc.</p> <p>Indicator 1.2.C: Explore how SBS can benefit other statistical domains in the DoS</p>

1. Purpose of the activity

The purpose of this activity is to Introduction and testing the StatBus System for it suitability to support an SBR in Jordan. This is the third Mission dedicated for testing StatBus.

The following subject will be covered:

- Fixing bugs in the StatBus system;
- Address challenges experienced in DoS;
- Define and set up DoS variables;
- Upload of full dataset from available administrative data sources (The Ministry of Industry and Trade and Companies Control Department; Social Security Cooperation data);
- Discuss integration with Income and Tax Department and survey data;
- Introduction and test of functionality of StatBus;

Strengthening the capacity of Jordan's Department of Statistics

Background information about StatBus:

StatBus is a client-server based system for statistical business registers which is an important backbone of any national statistical office. For additional information, please consult:

<https://www.StatBus.org/>

The main features are:

- A tool for storing and maintain information on businesses from administrative sources, surveys and censuses
- Licensed as open source
- Based on UN international guidelines for development and maintenance of statistical business registers
- Used for drawing samples and make national economic statistics
- Important for National Accounts

Table 1: Screenshot from StatBus in English

For additional information, please consult: <https://www.StatBus.org/>

Background information for enhancing SBR at DoS

As background information for building a roadmap for an enhanced SBR in Jordan the current achievements and challenges are provided in Annex C. In table 2 the known available variable from key administrative sources are listed.

In brief, DoS has reach out to the following five owner of administrative data where data from the first two sources are currently available. DoS are in dialogue with other data owner for additional data with focus on in particular administrative data Income and Tax Department.

- The Ministry of Industry and Trade (MIT)
- Companies Control Department (CCD)
- Social Security Corporation
- Income and Tax Department
- Greater Amman Municipality
- Ministry of Local Administration

Table 2: Current variables in the current SBR as well as know available variable from different key sources of administrative data (Based extract from appendix c).

Strengthening the capacity of Jordan's Department of Statistics

Source/Variable	SBR in DoS	Companies Controller Department	Social Security Corporation	Greater Amman municipality
Commercial name for the establishment	X	X		
Common name	X			
Establishment's owner name	X			
Establishment's owner nationality	X			
Establishment's owner national number	X	X		
Establishment's registration number	X	X		
Detailed address	X	X		
Number of workers			X	
Establishment's size				X
Establishment's registration date	X	X		
Registered capital	X			
Establishment's legal entity	X	X		
Occupation and description of economic activity			X	

StatBus has been successfully installed on a DoS server and it has been proved that the StatBus system support both Eng. However, in the test phase DoS has experienced the following challenges that will be addressed at the current Mission.

1. The MIT variables file is not compatible with the variables in the StatBus system *DoS are facing a problem in standardizing the terms between the variables in StatBus and the MIT variables, for example: we have two MIT variables related to the declared capital and the capital total; the problem is to reflect/project the declared capital variable on StatBus and that is due to StatBus containing capital related variables.*

2. Multiple failed attempts to load the MIT variables but to no avail and the staff were able to identify the problem *The issue is illustrated by screenshot below.*

Data source file name	Template name	Source uploading date	User name	Status	Note
Book2.csv	Ministry_of_Industry	2023-06-08 07:47	abed	Data load completed partially	The MERGE statement conflicted with the FOREIGN KEY constraint 'FK_StatisticalUnits_Statutes_UnitStatustId'. The conflict occurred in database 'SBR_JORDAN', table 'dbo.Statutes', column 'Id'. The statement has been terminated. Logs Reject
Book2.csv	Ministry_of_Industry	2023-06-08 07:46	abed	Data load completed partially	The MERGE statement conflicted with the FOREIGN KEY constraint 'FK_StatisticalUnits_Statutes_UnitStatustId'. The conflict occurred in database 'SBR_JORDAN', table 'dbo.Statutes', column 'Id'. The statement has been terminated. Logs Reject

Strengthening the capacity of Jordan's Department of Statistics

2. Expected output of the activity

- Activity report;
- Set up and data integration with DoS data;
- Define and set up DoS variables;
- Prepare integration of DoS data;
- Combining data from different sources;
- Meeting with National Account and the Economic survey department for a comprehensive understanding of any special needs;

3. Participants

MS Short Term Experts (STE's)

- **Mr. Steen Eiberg Jørgensen**, Deputy Head of Division for Business Data Collection and Registers, Statistics Denmark (MS Component Leader)

Mr. Steen Eiberg Jørgensen has more than 20 years' professional experience in official statistics administration. Since 2008 Mr. Jørgensen has strong expertise in all dimensions of business registers in particular - and of register based official statistics in general. This includes integration of administrative data within official statistics and knowledge of standardizing datasets, classifications and identifiers. In addition Mr. Jørgensen has extensive experience in delivering training programs both at national and international level and is active member of several Eurostat working groups.

E-Mail: sej@dst.dk

- **Mr. Christian Bendtsen**, IT Developer, IT, Statistics Denmark.
Mr. Bendtsen is IT Developer and has been employed at Statistics Denmark since 2007 mainly in the field of Statistical Business Register. Besides that, Mr. Bendtsen has extensive knowledge on Oracle Database, PL/SQL.
E-Mail: chb@dst.dk

- **Mr. Erik Søberg**, Head of the StatBus System, Statistics Norway.
E-mail: Erik.Soberg@ssb.no

DoS experts

- BC Component Leader: **Mr. Jaffar Ababneh**, Director of Data management Directory, DoS. E-Mail: Jafaar.Ababneh@DOS.GOV.JO

Additional experts from DoS: The full list will prepared by DoS and will be provided in Annex B.

Twinning team

- **Eng. Mohammad Khalaf**, Director of Sustainable Development Unit, Department of Statistics (DoS), Jordan (RTA Counterpart)
- **Dr. Charlotte Nielsen** (RTA)
- **Ms. Zaina Amireh** (Language Assistant)

Strengthening the capacity of Jordan's Department of Statistics

4. Resources

Translation and interpretation will be provided throughout the activity. Translation will be provided as sequential translation. Therefore, please keep frequent pauses when presenting and talking allowing our project translator to provide as accurate a translation as possible.

All material will be provided in both English and Arabic before, during and after the Mission.

The venue will be the Meeting room at DoS. Projector and other office material will be available.

2. Inputting Data

StatBus currently supports uploading data mainly through CSV files, so it would be ideal to have some cleaned up data ready in that format so we avoid using mission time for it.

Additionally, it would be ideal to have testing data ready, for example, a version of the relevant data files with only 100 rows, so that it is quick and easy to test them against the StatBus uploading module.

6. Overall agenda

Monday

- Quality check of data (MS)

Tuesday

- Upload, update and search functions in StatBus
- Data sources for SBR

Wednesday

- Upload, update and search functions in StatBus – continued
- Statistical units and repetition (presentation)

Thursday

- Summarizing and presentation of results for the management

Annex 2. Persons met

Data Management Directorate

- Mr. Jaffar Ababneh, Component 1 Leader from DoS , Director of Data Management Directorate jafaar.Ababneh@dos.gov.jo

Business Register Division

- Ms. Safa'a Abu Ghaitah, Business Register Division in DoS- Staff/
safaa.aboeta@DOS.GOV.JO
- Mr. Abd Alwahad Alharaizeh, Business Register Division in DoS- Staff /
Abdalwahed.ALharaizeh@DOS.GOV.JO
- Ms. Anwar Al Khasbah, Business Register Division in DoS- Staff / anwarkh@dos.gov.jo

Economic Surveys Directorate

- Mr. Mohammad Abdel Razzaq, Director of Economic Surveys Directorate, Component 3 Leader from DoS / Mohammad.AbdelRazzaq@DOS.GOV.JO

National Account Directorate

- Mr Walid Battah, Director of National Account, Walid.Battah@DOS.GOV.JO
- Mr. Murad Bani Hamad, Head of Annual Accounts- DoS,
Murad.BaniHamad@DOS.GOV.JO

National Account project

- Mr. Omar Hakouz, National Accounts Experts, hakouzo@un.org

Directorate of Methodologies and Research

- Mr. Derar Jawarneh, derar.jawarneh@DOS.GOV.JO
- Mr. Duraid Shawarwaewh, Duraid.shawawareh@DOS.GOV.JO /
Duraid997@yahoo.com

Electronic of Transformation and Information Technology Directorate

- Hussam abu Alshokur
- Mohammad Shatnawi
- Ayman Elholoul
- Xx
- xx

Annex 3. Summarizing of results

Topics handled

- Templates for the SBR system StatBus
- Cleaning of data from MIT and Social Security
- Clarification of unit types in SBR
- Clarification of Social Security file
- Claryfying of the sources for SBR and prioritizing
- Thoughts for making an analysis of ISIC 4 received from MIT and CCD
- Is a Business census needed?



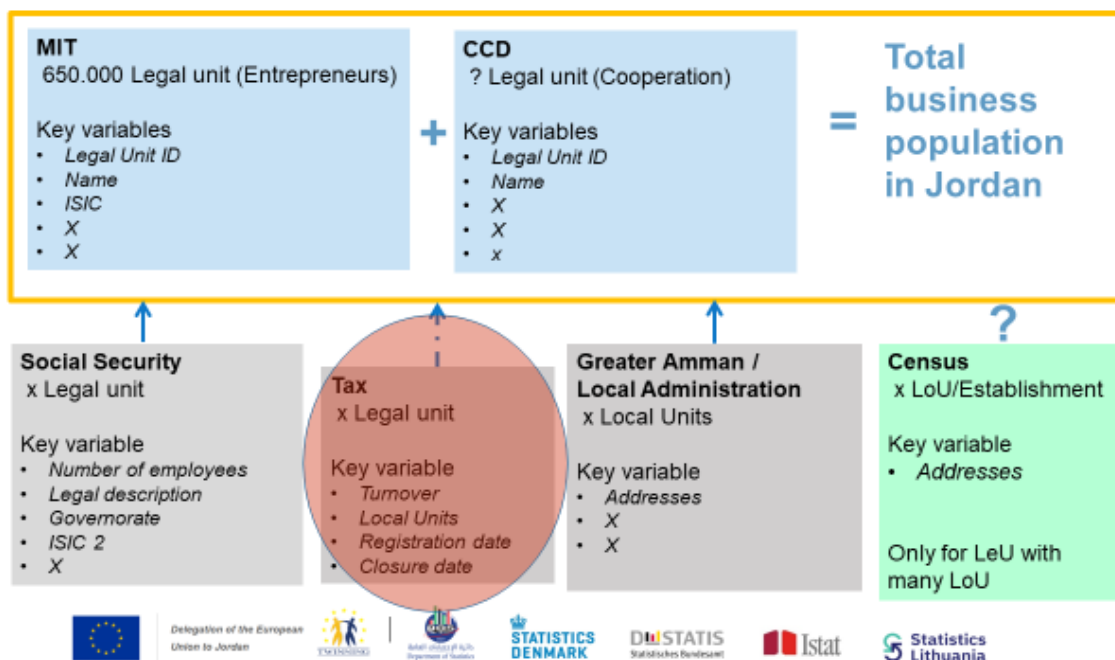
Expected output

- Fixing bugs and misunderstandings in the StatBus system; **Most fixed**
- Address-hierarchy challenges experienced in DoS; **Not a high priority, National issue**
- Define and set up DoS variables; **Yes**
- Upload of full dataset from available administrative data sources (The Ministry of Industry and Trade and Companies Control Department; Social Security Cooperation data); **100.000 from MIT uploaded. Data from CCD is loaded with 200 units. Small-scale data for all sources has been successfully uploaded on Experts pc. But merging sources is work in progress**
- Discuss integration with SSC data and survey data; **Started**
- Introduction and test of functionality of StatBus; **Some**
- Meeting with National Account and the Economic survey department for a comprehensive understanding of any special needs; **Yes, but not finalized**



Sources

- TAX – only receiving aggregated data – nothing for SBR
 - MoDEE project must get a better agreement,
 - Individual data on companies can't be so confidential, maybe a few of the variables only?
- Other (No MoU)
 - MIT
 - CCD
 - SoSe
 - Once a year receiving data from
 - Greater Amman Municipality , Project with UNDP (LoU) - Licensing for active LeU
 - Ministry of local administration (central for other municipalities), Project with UNDP (NA) (LoU) Licensing for active LeU
 - Chamber of commerce, trade (Leu)
 - Aqaba special economic zone (LeU) look into files with variables – analysis of quality
 - Petra development area



Status I (Terminology)

الوحدة المسجلة (الوحدة القانونية) - Legal unit
 الوحدة المحلية - Local unit
 المنشأة - LKAU / Establishment
 وحدة نوع النشاط - KAU
 مؤسسة - Enterprise



Statistical unit: The unit of observation or measurement for which data are collected or derived from.

Branches is not a Unit in SBR.

It is a construction, because of census, where unit there have their own budget and can hire/fire employees is a Branch



Status I (Terminology)

Legal unit is a unit that is recognized by law or society, independently of the persons or institutions that own it. The characteristics of a legal unit are that it owns goods or assets, it incurs liabilities and it enters into contracts. A legal unit always forms, either by itself or sometimes in combination with other legal units, the legal basis for a statistical unit.

The local unit is an enterprise or part thereof (e.g. a workshop, factory, warehouse, office, mine or depot) situated in a geographically identified place. It can have activity different from the main activity.

An **enterprise** is an organizational unit producing goods or services which has a certain degree of autonomy in decision-making. An enterprise can carry out more than one economic activity and it can be situated at more than one location. An enterprise may consist out of one or more legal units.

The **KAU (kind-of-activity unit)** is a part of an **enterprise**. The KAU groups together all the offices, production facilities etc. of an **enterprise**, which contribute to the performance of a specific economic activity defined at class level (four digits) of the UNECE classification of economic activities ([ISIC Rev. 4.1](#)). KAU is only created if it has huge influence on the ISIC code/Jordanian economy.

LKAU (Local kind-of-activity unit) – synonym for establishment.

LKAU is (as KAU) only created when it gives value added for the statistical production.



KAU- When and how

- In the practical implementation, the delineation of KAU may be restricted to enterprises which because of their size (e.g. production value) have:
 - (i) a significant influence on the aggregated (national) data at ISIC activity level, and
 - (ii) at the level of the individual enterprise, as guidance one secondary activity accounts for:
 - a) more than 30 % of its total production at the 4-digit (class) level of the ISIC Rev. 4 classification, or
 - b) more than 20 % of its total production at the 2-digit (division) level of the ISIC Rev. 4 classification.
- In practice, the Users including the SBR team, creates a list of the most important units from their heads or identified by size (10-50 LeU).



ISIC 4 priority example

Company	MIT	CCD	SSC	SBR Quality
Rank	3		2	1
1	1234		1235	
2	2333		2333	
3	4556		4557	4556
4	3434			
5		X	4546	
6		X	7410	



Statistical Business Register

StatBus is a client-server based system that handles all basic roles of a Statistical Business Register, which is an important backbone of any national statistical office.

The main features are:

- A tool for storing and maintaining information on businesses from administrative sources, surveys and censuses
- Licensed as open source
- Based on UN international guidelines for development and maintenance of statistical business registers
- Seamless merging of data from multiple sources
- Used for drawing samples and make national economic statistics
- Important for National Accounts
- For additional information, please consult: <https://www.StatBus.org/>



10

Statistical Business Register

Advantages

- SBR will be aligned with the international standards
- Not a start from scratch
- Support all type of units and relations between unit types
- Better historical model
- Support Business Demography
- Have a user interface
- Support Address hierarchy
- Support Classification (eg. Isic4) and Value lists



11

Census, is it needed

- Why a business Census?
 - DoS get knowledge about:
 - unregistered activities
 - Buildings for a Building and dwelling register
 - Addresses ?
- Why not a Business Census from a SBR perspective?
 - Dos have knowledge about:
 - All Legal Units
 - Access to Local Units
 - Okay quality on data
 - and
 - Cheaper to contact the legal Unit for information



12

Next steps

- More detailed workplan created in week 30
- Analyze quality of data received
- Meeting with register owners
- Create rules and priorities for all kind of updates - ranking
- Work with identifier of updates in existing units and use the ranking
- Understanding of the SBR
 - What are the benefits of having a database
 - How to work with the quality
 - How to work and update from the screens



13