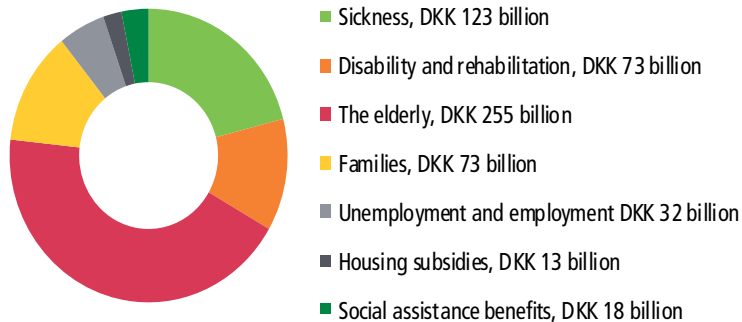


## EXPENDITURE ON SOCIAL AND HEALTH SERVICES. 2011



The figure is replaced as the previous figure did not reflect the correct data.

[www.statbank.dk/udg1](http://www.statbank.dk/udg1)

## TRANSFER PAYMENTS

	Unit	1990	1995	2000	2005	2011
<b>Total</b>	1 000 persons	<b>1 451</b>	<b>1 641</b>	<b>1 531</b>	<b>1 579</b>	<b>1 809</b>
<b>Temporary allowance, total</b>		<b>421</b>	<b>428</b>	<b>423</b>	<b>421</b>	<b>486</b>
Unemployment benefit	-	210	231	124	132	108
Guidance, upgrading skills	-	...	...	...	...	53
Subsidized employment	-	...	...	...	...	53
Sickness benefit	-	42	42	54	69	71
Maternity benefit	-	32	36	34	55	56
Cash benefit	-	115	102	89	96	75
Rehabilitation	-	22	17	28	21	3
Activation	-	...	...	70	44	...
Leave benefits	-	...	...	24	4	0
Unemployment allowance	-	...	...	...	...	12
Flex jobs	-	...	...	...	...	53
<b>Permanent allowance, total</b>	-	<b>1 000</b>	<b>1 081</b>	<b>1 108</b>	<b>1 148</b>	<b>1 323</b>
Old-age pension	-	669	678	671	734	971
Early retirement pension	-	245	267	258	247	238
Early retirement pay	-	87	136	179	168	114

[www.statbank.dk/auh01](http://www.statbank.dk/auh01)

Unemployed adult Danes are entitled to receive transfer payments. Most transfer payments are permanent payments to adults who will not return to the labour market, such as pensioners and persons on early retirement. The remaining part is received by persons temporarily outside the labour market, for example due to illness, maternity leave or unemployment.

Total social service and health expenditure amounted to DKK 587 billion in 2011. This corresponds to 33 per cent of the Danish GDP. Almost three quarters of the expenses were paid by the public sector, while the remaining expenses were paid by the employers (12 per cent) and the protected persons (11 per cent).

The elderly receive the major part of social services through pensions, nursing homes, home help, etc. Sick Danes receive the second-largest part in the form of primarily hospitals and health insurance. The disabled and rehabilitated receive services in the form of, for example, early retirement pension and assistance in their homes. Families with children receive services in the form of, among other things, day-care institutions and child benefits. Almost all Danes thereby receive social services sooner or later in their lives.

**DID YOU KNOW THAT**  
12,600 children and young persons under 18 years are placed outside their home, e.g. in foster care or residential institutions.