

## Geography and climate

1

### Geography

#### The long Danish coastline

Denmark is a small country, compared to its closest neighbours. Sweden and Germany are ten times and eight times larger respectively than Denmark, which has an area of more than 43,000 km<sup>2</sup>. On the other hand, Denmark's coastline is extraordinarily long for a country of this size. Denmark stretches along a coast of more than 7,300 km, which is longer than the Chinese Wall. It corresponds to almost one and a half metre of coast per inhabitant.

One characteristic of Denmark's geography is the many islands, a total of 407. The largest islands are, by order of mention, Sjælland, Vendsyssel-Thy, Fyn, Lolland and Bornholm. Jutland (including Vendsyssel-Thy) account for 70 per cent of Denmark's total area.

In addition to Denmark, the Kingdom of Denmark includes the self-governing areas of Greenland and the Faroe Islands. The ice-free part of Greenland is almost ten times larger than Denmark.

#### Denmark's nature is characterized by agriculture and forests

For thousands of years, Denmark has been an agricultural country, and this has largely characterized Danish landscapes. Consequently, two thirds of the landscape consists of man-made agricultural areas. However, forests are also evident in the landscape in the form of, among other types, deciduous forest and coniferous forest. Rold Forest and Grib Forest are the largest forests.

Figure 1

Distribution of Denmark's area by type of area

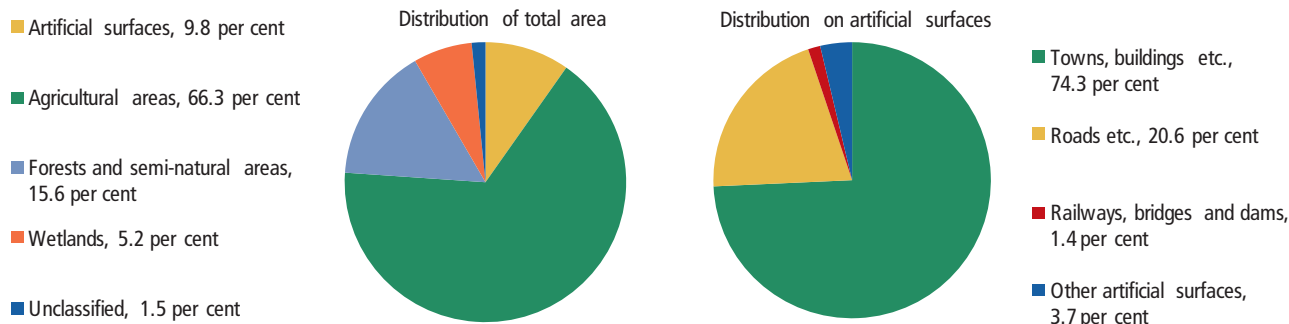


Table 4

#### Man-made infrastructure and buildings characterize the landscape

Cities, roads, railroads, bridges and other types of man-made surfaces cover a total of 10 per cent of Denmark's area, corresponding to three times the area of the Faroe Islands – or 56 per cent of Sjælland. Urban centres, such as residential neighbourhoods and industrial districts, dominate and account for three-fourths of the man-made surfaces.

## 2

## Climate

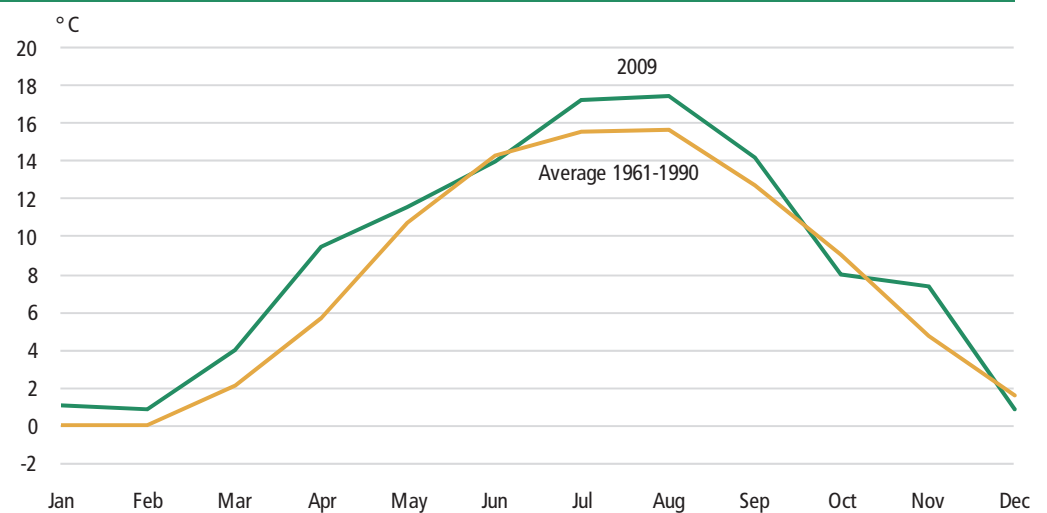
**It rains or snows every second day**

The Danish weather is known for being variable. It is a fact that it rains or snows every second day in Denmark, since a year has an average of 171 days of precipitation.

**Snow seven days a month during the wintertime**

Denmark has mild winters without large amounts of snow, but with much rain. On average, it snows seven days every month in December, January and February. This decreases to five days of snow in March, and April has an average of three days of snow.

Figure 2 Temperatures in Denmark



Source: [www.dmi.dk](http://www.dmi.dk)

**Temperature variations of 16 °C during a year**

In a year, the average temperature generally varies from 0 °C in January to 16 °C in August. Great variations occur in relation to the average. The coldest day in more than 100 years was a January day in 1982 with temperatures of -31 °C, and the warmest day was an August day in 1975 with temperatures of 36 °C.

**"... and it will be overcast again today"**

A natural feature of everyday life in Denmark is overcast days and many clouds in the sky are. The clouds cover an average of two thirds of the sky in a year, but the summer is the least cloudy season with an average cloudiness of 60 per cent.

**Not many days of sunshine in a year**

Denmark is a country where the total hours of sunshine a year gives occasion to enjoy the sun while it is out. There is an average of four hours of sunshine a day, naturally primarily during the spring and summertime. From May to August, there are more than six hours of sunshine a day.

**Table 1** Area, population and coastline

	Land and inland water area km <sup>2</sup>	Population 1 January 2010	Density of population per km <sup>2</sup>	Number of islands	Inland water area 1959 km <sup>2</sup>	Coastline 1959 km
<b>All Denmark</b>	<b>43 098.31</b>	<b>5 534 738</b>	<b>128.4</b>	<b>407</b>	<b>700</b>	<b>7 314</b>
<b>Provinces</b>						
Sjælland	7 450.59	2 348 684	315.2	99	184	1 735
Lolland-Falster	1 795.34	109 896	61.2	45	24	587
Bornholm <sup>1</sup>	588.55	42 255	71.8	9	3	141
Fyn	3 485.84	484 862	139.1	100	26	1 130
The Islands, total	13 320.32	2 985 697	224.1	253	237	3 593
Jylland	29 777.99	2 549 041	85.6	154	463	3 721
<b>Regions</b>						
<b>Region Hovedstaden</b>	<b>2 561.27</b>	<b>1 680 271</b>	<b>656.0</b>	<b>28</b>	<b>101</b>	<b>602</b>
Copenhagen City	180.11	678 873	3 769.2	5	18	213
Copenhagen Suburban	340.08	512 692	1 507.6	...	...	...
Nordsjælland	1 452.53	446 451	307.4	14	80	248
Bornholm <sup>1</sup>	588.55	42 255	71.8	9	3	141
<b>Region Sjælland</b>	<b>7 273.21</b>	<b>820 564</b>	<b>112.8</b>	<b>114</b>	<b>109</b>	<b>1 861</b>
Østsjælland	807.59	234 574	290.5	18	7	154
Vest- og Sydsjælland	6 465.62	585 990	90.6	96	102	1 707
<b>Region Syddanmark</b>	<b>12 206.17</b>	<b>1 200 277</b>	<b>98.3</b>	<b>120</b>	...	...
Fyn	3 485.84	484 862	139.1	100	26	1 130
Sydjylland	8 720.33	715 415	82.0	20	...	... <sup>2</sup>
<b>Region Midtjylland</b>	<b>13 124.34</b>	<b>1 253 998</b>	<b>95.5</b>	<b>79</b>	...	...
Østjylland	5 907.10	826 923	140.0	48	...	...
Vestjylland	7 217.24	427 075	59.2	31	...	...
<b>Region Nordjylland</b>	<b>7 933.32</b>	<b>579 628</b>	<b>73.1</b>	<b>56</b>	...	...
<b>Faroe Islands</b>	<b>1 398.85</b>	<b>48 778<sup>3</sup></b>	<b>34.9</b>	<b>17<sup>4</sup></b>	...	<b>1 117<sup>5</sup></b>
<b>Greenland</b>	<b>410 449.00<sup>6</sup></b>	<b>56 194<sup>3</sup></b>	<b>0.1</b>	...	...	...

Note: Due to different compilation methods figures deviate from figures in table 4. The most southern point in Denmark is Gedserodde on Falster, the most northerly point is near Skagen, the most westerly point is Blåvandshuk, and the most easterly point is Christiansø (Østerskær).

<sup>1</sup> Including Christiansø. <sup>2</sup> The border with Germany was measured as 67.7 km. In length. <sup>3</sup> 1 January 2009. <sup>4</sup> Inhabited islands. <sup>5</sup> Measured in 1955. <sup>6</sup> Only the part of Greenland free of ice is included. The total area of Greenland is 2,166,086 km<sup>2</sup>, of which 81 per cent is covered by inland ice.

Source: National Survey and Cadastra  
www.statbank.dk/folk1 and are207

**Table 2** Administrative division of Denmark. 2010

	Municipalities	Parishes	Customs and tax regions <sup>1</sup>	Constituencies <sup>2</sup>	
				Counties and large constituencies	Constituencies
<b>Total</b>	<b>98</b>	<b>2 116</b>	<b>30</b>	<b>10</b>	<b>92</b>
<b>The Islands</b>	<b>56</b>	<b>887</b>	<b>16</b>	<b>6</b>	<b>48</b>
<b>Region Hovedstaden</b>	<b>29</b>	<b>245</b>	<b>7</b>	<b>4</b>	<b>28</b>
København by	4	81	1	1	12
Københavns omegn	13	56	2	1	8
Nordsjælland	11	86	3	1	6
Bornholm	1	22	1	1	2
<b>Region Sjælland</b>	<b>17</b>	<b>417</b>	<b>6</b>	<b>1</b>	<b>12</b>
Østsjælland	5	60	2	}	3
Vest- og Sydsjælland	12	357	4		1
<b>Region Syddanmark</b>	<b>22</b>	<b>499</b>	<b>7</b>	<b>2</b>	<b>21</b>
Fyn	10	225	3	1	8
<b>Jutland</b>	<b>42</b>	<b>1 229</b>	<b>14</b>	<b>4</b>	<b>44</b>
<b>Region Syddanmark (continued)</b>					
Syddjylland	12	274	4	1	13
<b>Region Midtjylland</b>	<b>19</b>	<b>615</b>	<b>7</b>	<b>2</b>	<b>22</b>
Østjylland	11	356	4	1	11
Vestjylland	8	259	3	1	11
<b>Nordjylland</b>	<b>11</b>	<b>340</b>	<b>3</b>	<b>1</b>	<b>9</b>

<sup>1</sup> Customs centres as well as assessment and valuation districts are also included. <sup>2</sup> In accordance with Act no. 1292 of 8 December 2006 on elections to the Danish Parliament.

[www.statbank.dk/02](http://www.statbank.dk/02)

**Table 3** Area and population. Regions and inhabited islands

Municipality code	Area in ha 2009	Population 1 January		Municipality code	Area in ha 2009	Population 1 January	
		2008	2009			2008	2009
<b>All Denmark</b>	<b>4 309 831</b>	<b>5 475 791</b>	<b>5 511 451</b>		<b>348 584</b>	<b>482 410</b>	<b>484 346</b>
<b>Zealand and its islands</b>	<b>745 059</b>	<b>2 310 624</b>	<b>2 329 910</b>				
Zealand	703 130	2 130 970	2 147 281				
330 Agersø	684	233	221				
390 Amager	9 629	166 030	169 157				
370 Bogø	1 307	1 124	1 112				
350 Enø	340	275	281				
390 Eskilsø	139	2	2				
390 Farø	93	5	5				
370 Gavnø	575	35	40				
330 Glænø	559	62	63				
211 Hesselø	71	0	0				
390 Langø	127	4	3				
390 Masnedø	168	122	135				
390 Møn	21 775	10 200	10 074				
326 Nekselø	223	21	21				
390 Nyord	499	45	41				
330 Omø	452	177	169				
316 Orø	1 502	890	906				
185 Saltholm	1 599	5	5				
326 Sejerø	1 237	397	373				
101 Slotsholmen	21	21	19				
101 Trekroner	2	2	1				
390 Tærø	175	4	1				
77 named islands	752	•	•				
<b>Lolland, Falster and their islands</b>	<b>179 534</b>	<b>111 715</b>	<b>110 968</b>				
Lolland	124 286	67 306	66 655				
376 Falster	51 376	43 640	43 530				
360 Askø	282	47	46				
360 Fejø	1 600	557	574				
360 Femø	1 138	150	147				
360 Lilleø	86	6	5				
360 Skalø	106	9	11				
360 37 named islands	660	•	•				
<b>Bornholm and its islands</b>	<b>58 855</b>	<b>42 913</b>	<b>42 659</b>				
400 Bornholm	58 815	42 817	42 563				
411 Christiansø <sup>1</sup>	25	} 96	96				
411 Frederiksø <sup>1</sup>	4						
411 6 named islands	11	•	•				
<b>Funen and its islands</b>	<b>348 584</b>	<b>482 410</b>	<b>484 346</b>				
Funen	298 456	451 394	453 700				
430 Avernakø	586	111	111				
492 Birkholm	92	10	10				
430 Bjørnø	150	36	32				
420 Bågø	623	36	37				
479 Drejø	426	71	69				
410 Fænø	394	3	2				
479 Hjortø	90	12	13				
482 Langeland	28 384	13 723	13 340				
430 Lyø	605	116	109				
482 Siø	131	18	17				
479 Skarø	197	40	39				
482 Strynø	488	216	206				
479 Thurø	753	3 728	3 742				
440 Tornø	21	4	4				
479 Tåsinge	6 979	6 188	6 217				
480 Æbelø	232	2	-				
492 Ærø	8 807	6 702	6 698				
82 named islands	1 170	•	•				
<b>Jutland</b>	<b>2 977 799</b>	<b>2 528 129</b>	<b>2 543 568</b>				
Jutland peninsula	2 387 430	2 151 667	2 167 177				
Vendsyssel-Thy	468 573	289 630	289 849				
773 Agerø	385	38	35				
727 Alrø	751	149	156				
540 Als	31 222	52 109	51 892				
707 Anholt	2 237	164	167				
580 Barsø	266	23	24				
851 Egholm	600	55	52				
615 Endelave	1 308	174	168				
563 Fanø	5 578	3 192	3 207				
779 Fur	2 229	872	865				
813 Hirsholm	17	4	4				
766 Hjarnø	321	106	107				
671 Jegindø	791	524	500				
580 Kalvø	18	8	7				
820 Livø	331	10	9				
825 Læsø	10 122	2 003	1 993				
561 Mandø	763	46	44				
773 Mors	36 331	22 091	22 098				
550 Rømø	12 886	689	715				
741 Samsø	11 206	4 085	4 003				
580 Store Okseø	11	3	3				
727 Tunø	352	119	118				
671 Venø	646	201					
510 Årø	566	167					
128 named islands	2 859	•	•				

<sup>1</sup> Not included in the division of municipalities, administered by the Ministry of Defence.

Table 4	Land cover	
	Km <sup>2</sup>	Per cent
<b>Total area</b>	<b>43 560.76</b>	<b>100.00</b>
<b>Artificial surfaces</b>	<b>4 246.46</b>	<b>9.75</b>
Urban fabric, industrial and commercial units <sup>1</sup>	3 154.63	7.24
Motorway	43.96	0.10
Expressway	9.10	0.02
Road broader than 6 metres	269.02	0.62
Road 3 – 6 metres	551.58	1.27
Railway	58.22	0.13
Bridge	0.02	0.00
Embankment	2.64	0.01
Runway	3.31	0.01
Mineral extraction sites	19.94	0.05
Technical sites	17.46	0.04
Cemeteries	6.96	0.02
Sport facilities	52.18	0.12
Leisure facilities	57.44	0.13
<b>Agricultural areas</b>	<b>28 897.85</b>	<b>66.34</b>
Arable land	28 615.01	65.69
Market garden	33.87	0.08
Pastures	155.18	0.36
Pastures in urban areas	93.72	0.22
Land principally occupied by agriculture, with significant areas of natural vegetation	0.07	0.00
<b>Forests and semi-natural areas</b>	<b>6 788.32</b>	<b>15.58</b>
Forest	1 829.48	4.20
Broad-leaved forest	1 309.40	3.01
Coniferous forest	2 147.34	4.93
Mixed forest	7.98	0.02
Natural grassland	391.92	0.90
Moors and heath land	981.76	2.25
Beaches, dunes and sand plains	51.21	0.12
Sparsely vegetated areas	69.23	0.16
<b>Wetlands</b>	<b>2 274.89</b>	<b>5.22</b>
Meadows	808.89	1.86
Inland wetlands	205.66	0.47
Peat bogs	875.60	2.01
Salt marshes	384.74	0.88
<b>Water bodies</b>	<b>670.59</b>	<b>1.54</b>
Lakes	616.49	1.42
Stream width 8-12 metres	49.42	0.11
Reeds	0.34	0.00
Fish farms	4.34	0.01
<b>Unclassified</b>	<b>682.65</b>	<b>1.57</b>

Note: The figures are based on different primary data covering the period from the end of the 1980s to the middle of the 1990s. Due to different compilation methods figures deviate from figures in table 1. The Primary data are the *land use map; Area Information System* (The Ministry of Environment). Further information can be obtained from: [www.dmu.dk](http://www.dmu.dk). The figures are a revision (not an update) of the collected data. The National Environmental Research Institute conducted the revision in 2001. The classification is based on the three-digit *CORINE land cover nomenclature*, as a fourth number is added for national purposes.

Source: National Environmental Research Institute

<sup>1</sup> Include city centres, human locality areas with low buildings, human locality areas with high buildings, built-up areas in rural areas and industrial areas. Roads are excluded.

Lake's name	Location	1999-2002	2004-2008	Lake's name	Location	1999-2002	2004-2008
		————— km <sup>2</sup> —————				————— km <sup>2</sup> —————	
Arresø	Sjælland	39.5	39.6	Søndersø	Lolland	8.4	8.0
Esrum Lake	Sjælland	17.4	17.4	Tystrup Lake	Sjælland	6.7	6.7
Mossø	Østjylland	16.6	16.6	Julso	Østjylland	5.8	5.8
Stadil Fjord <sup>1</sup>	Vestjylland	17.3	16.2	Tømmerby Fjord	Nordjylland	6.0	5.7
Saltbæk Vig <sup>1</sup>	Sjælland	16.1	15.9	Ulvedybet	Nordjylland	5.9	5.5
Tissø	Sjælland	12.7	12.5	Tange Lake	Vestjylland	5.5	5.5
Furesø	Sjælland	9.3	9.4	Lund Fjord	Nordjylland	5.1	5.1
Skanderborg Lake	Østjylland	8.6	8.6				

<sup>1</sup> Area of brackish water.

[www.kms.dk](http://www.kms.dk)

Table 6	Meteorological conditions												
	Jan.	Feb.	Marts	April	Maj	Juni	Juli	Aug.	Sept.	Okt.	Nov.	Dec.	Året
°C													
<b>Mean temperature</b>													
Normal (1961-1990)	0.0	0.0	2.1	5.7	10.8	14.3	15.6	15.7	12.7	9.1	4.7	1.6	7.7
2009	1.0	0.8	4.0	9.4	11.5	13.9	17.2	17.4	14.1	7.9	7.3	0.8	8.8
<b>Average daily temperature</b>													
Normal (1961-1990)	2.0	2.2	4.9	9.6	15.0	18.7	19.8	20.0	16.4	12.1	7.0	3.7	10.9
2009	2.7	2.6	6.6	14.7	15.7	18.2	21.6	21.4	17.9	10.7	8.9	2.6	12.0
<b>Average nightly temperature</b>													
Normal (1961-1990)	-2.9	-2.8	-0.8	2.1	6.5	9.9	11.5	11.3	9.1	6.1	2.3	-0.7	4.3
2009	-1.1	-1.5	1.3	4.5	7.2	9.4	13.0	13.6	10.4	4.9	5.5	-1.4	5.5
<b>Maximum temperature</b>													
1874-2009 Temp.	12.4	15.8	22.2	28.6	32.8	35.5	35.3	36.4	32.3	24.1	18.5	14.5	36.4
Measured during the years	<i>2005</i>	<i>1990</i>	<i>1990</i>	<i>1993</i>	<i>1892</i>	<i>1947</i>	<i>1941</i>	<i>1975</i>	<i>1906</i>	<i>1978</i>	<i>1968</i>	<i>1953</i>	<i>1975</i>
2009	7.3	8.7	13.7	23.8	26.0	27.9	29.9	32.7	28.1	17.2	14.2	9.7	32.7
<b>Minimum temperature</b>													
1874-2009 Temp.	-31.2	-29.0	-27.0	-19.0	-8.0	-3.5	-0.9	-2.0	-5.6	-11.9	-21.3	-25.6	-31.2
Measured during the years	<i>1982</i>	<i>1942</i>	<i>1888</i>	<i>1922</i>	<i>1900</i>	<i>1936</i>	<i>1903</i>	<i>1885</i>	<i>1886</i>	<i>1880</i>	<i>1973</i>	<i>1981</i>	<i>1982</i>
2009	-13.0	-13.9	-8.0	-2.9	-0.1	0.2	5.7	7.1	0.4	-4.9	-3.0	-19.0	-19.0
degree-days													
<b>Degree-days</b>													
Normal (1961-1990)	522	491	461	337	198	84	43	47	128	243	361	469	3 382
2009	497	453	403	227	170	106	21	19	90	282	290	501	3 061
mm.													
<b>Precipitation</b>													
Normal (1961-1990)	57	38	46	41	48	55	66	67	73	76	79	68	712
2009	41	34	53	10	56	63	86	68	45	79	126	71	732
hours													
<b>Bright sunshine, all DK</b>													
Normal (1961-1990)	43	69	110	162	209	209	196	186	128	87	54	43	1 495
2009	39	56	106	272	274	280	220	200	160	114	26	46	1 793
days													
<b>Summer days (max. &gt;25°)</b>													
Normal (1961-1990)	0.0	0.0	0.0	0.0	0.2	1.9	2.6	2.3	0.1	0.0	0.0	0.0	7.2
2009	0.0	0.0	0.0	0.0	<	1.8	4.1	4.1	0.6	0.0	0.0	0.0	10.7
<b>Frost days (min. &lt;0°)</b>													
Normal (1961-1990)	19.0	19.0	15.0	6.6	0.7	<	0.0	0.0	0.2	1.8	7.3	15.0	84.0
2009	17.8	19.5	6.8	1.2	0.0	0.0	0.0	0.0	0.0	2.3	0.8	18.6	66.9
<b>Ice days (max. &lt;0°)</b>													
Normal (1961-1990)	8.6	7.5	2.2	0.1	0.0	0.0	0.0	0.0	0.0	0.0	0.6	4.0	23.0
2009	3.1	2.3	0.0	0.0	0.0	0.0	0.0	0.0	0.0	0.0	0.0	6.2	11.5
<b>Precipitation days (R <sup>3</sup> 0.1 mm)</b>													
Normal (1961-1990)	17.0	13.0	14.0	12.0	12.0	12.0	13.0	13.0	15.0	16.0	18.0	17.0	171.0
2009	12.8	16.1	16.0	4.3	14.2	11.0	19.3	15.9	11.8	17.4	27.2	17.9	183.9
<b>Days with snow</b>													
Normal (1961-1990)	7.6	6.4	5.3	2.6	0.2	0.0	0.0	0.0	0.0	0.1	2.3	5.8	30.0
2009	3.1	9.4	1.2	0.0	0.0	0.0	0.0	0.0	0.0	0.2	0.0	6.1	20.0

Note 1: *Degree days* are used as a measurement for heating needs in the heating season (1 September - 31 May). Degree days are shade-temperature days.

Note 2: < means less than 0.1, but greater than 0.0.

Source: Danmarks Meteorologiske Institut

[www.dmi.dk](http://www.dmi.dk)