

# Education and culture

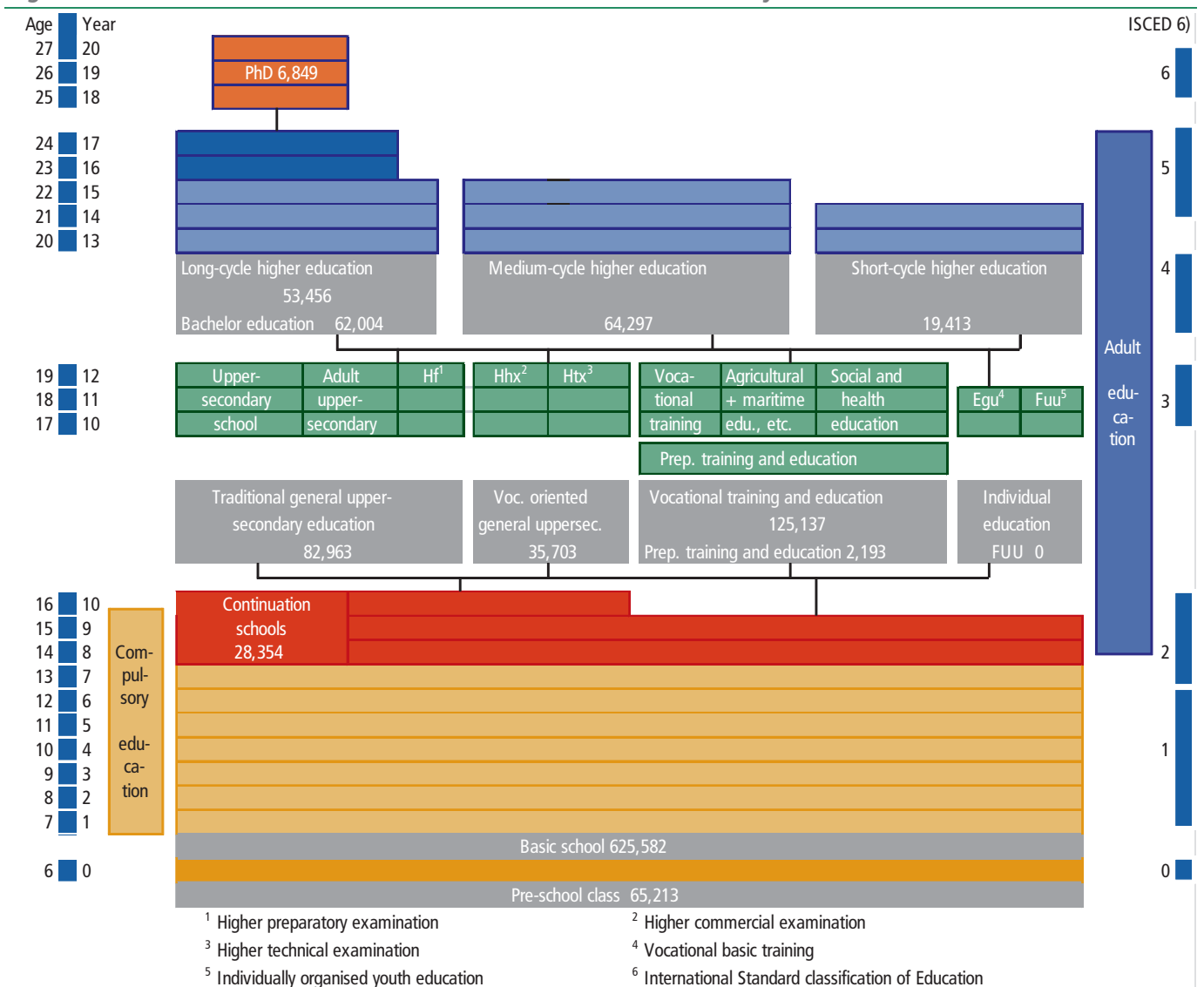
1

## Education

### Pre-school to 10th form

Basic school forms the foundation of the Danish educational system. It begins with pre-school class and leads up to the voluntary 10th school year. In 2008, 719,000 pupils attended basic school. Of these, 65,200 had started in pre-school class, while 176,700 attended 8th to 10th form, and among these, 28,400 attended continuation schools. Due to changes in the age composition of the population, the number of pupils in pre-school class has increased by 2 per cent since 1997. However, the number of pupils in 8th to 10th form declined in the period up to 1999, but it has subsequently increased by 19 per cent in the whole period from 1997 to 2008. Figure 1 gives an overview of the structure and admission systems in the Danish educational system, from pre-school through secondary education to higher education.

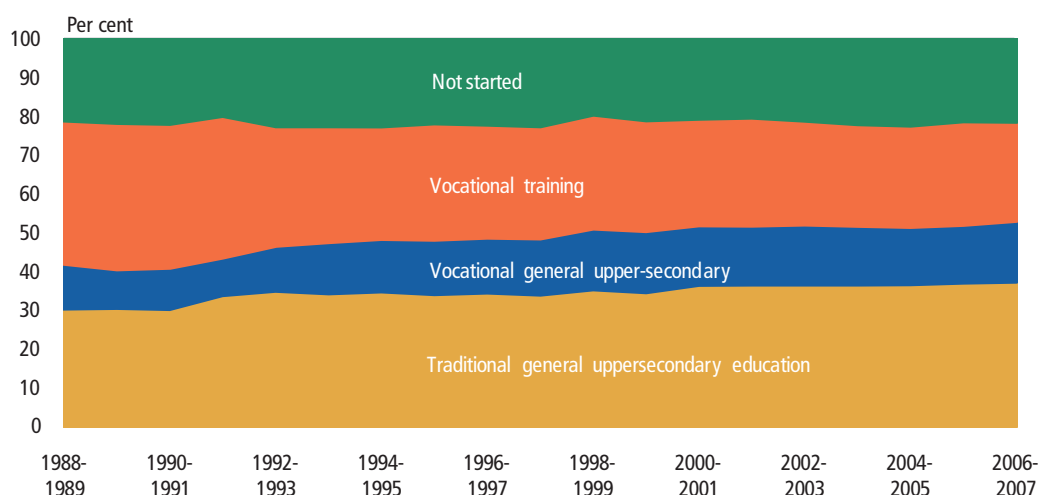
Figure 1 Number of students in the educational system. 1 October 2008



### Half of the students commence general upper secondary education immediately after leaving basic school

Of all students leaving school in 2007-08, 79 per cent had commenced further education after a period of three months. 53 per cent had chosen to attend general upper-secondary education or vocational education (general programmes of education at second level, second stage, hhx, htx), while 25 per cent opted for vocational education and training, e.g. carpenters, bricklayers or hairdressers. 41 per cent of the students leaving school in 1988-89 attended general upper-secondary education or vocational education, while 37 per cent opted for vocational education and training within a period of three months after leaving basic school.

**Figure 2** Students three months after leaving basic school



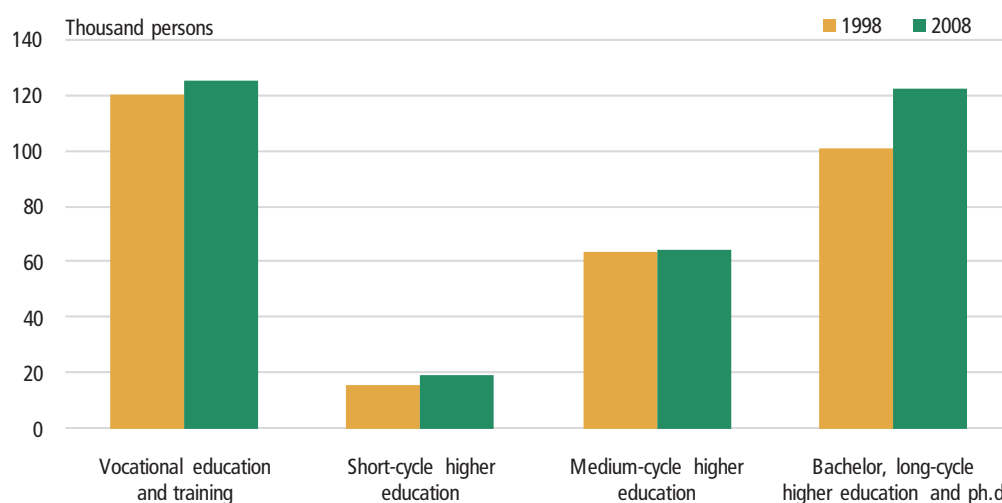
### 15 per cent of the students from general upper-secondary education enrol for an education immediately

15 per cent of students who graduated from general upper-secondary education in 2007-08 continued their education immediately after completing their general upper-secondary education. The corresponding proportion of graduates from 1998-99 was 18 per cent. The proportion of graduates from 2007-08 who continued their education immediately after graduating from vocational general upper-secondary education was 32 per cent.

77 per cent of the graduates from general upper-secondary education or vocational education in 2007-08 who had enrolled for further education three months after their graduation chose higher education.

### More students commence education and training

In 2008, the number of students attending vocational education and training was 125,100, while the total number attending higher education, e.g. police officers, nurses or doctors, including 6,800 research students, reached 206,000. Since 1998, the number of students attending vocational education and training has increased by 4 per cent, and by 14 per cent for higher education.

**Figure 3** Students attending education and training providing profess. qualifications

www.statbank.dk/u11 and u1107

### Social science accounts for the highest number of students

Of the 206,000 students attending higher education, social science, educational teaching and the humanities account for the highest number of students, with 26, 16 and 18 per cent, respectively. Within social science, a large number of students attend education as MSc's (economics and business administration), or study law and economics, whereas pedagogues and school teachers prevail within pedagogy. The humanities mainly comprise languages, history, philosophy and theology.

12 per cent of all students attend technical education, such as engineers or architects, and 7 per cent attend natural science education, comprising mainly physics, mathematics, chemistry and biology. 14 per cent of all students attend health education, such as nurses, doctors and pharmacists.

### 238,000 attended courses in adult education at private course suppliers

Besides the institutions behind adult education and training regulated by law, different types of suppliers of training courses offer training on a private basis. These include private commercial firms, but also the social partners, trade organisations and self governing institutions. In 2008, 238,000 attended courses in adult education at private course suppliers.

### Most course participants at adult vocational training centres

Outside the main educational system, there is a number of public-managed courses providing formal qualifications. Adult education courses covering almost all levels of education within the ordinary education system are available.

In the school year 2007-08, more than one million course participants completed their participation in public-managed adult or supplementary courses, and course participants at adult vocational training constituted 68 per cent of these. Course participants at general courses, i.e. 8th and 9th form and higher preparatory course, constituted 23 per cent, while course participants at further education constituted 9 per cent, respectively.

37 per cent of the course participants had vocational training as highest education completed, 46 per cent had basic school, general upper secondary school or unknown education stated, and 17 per cent had completed a higher education.

#### **66 per cent of the course participants at general courses were women**

49 per cent of the participants in public courses were women. The proportion of women at the general courses was 66 per cent, while the corresponding figure at the adult vocational training centres was a mere 42 per cent. At the higher education centres, 58 per cent were women.

#### **Ten years after basic school half of the Danes have profess. qualifications**

Ten years after leaving basic school in 1997-98, about 48 per cent had completed training providing them with professional qualifications. Of this group, 29 per cent had completed a vocational education course and 20 per cent had completed higher education, while 25 per cent were still studying. The educational remainder – young people who had not attended any educational institution or had completed an education course providing them with professional qualifications ten years after leaving basic school – accounted for 26 per cent of the year 1997-98. The corresponding proportion was 28 per cent for graduates from 1988-89.

## 2

### **The population's educational level**

#### **Increase in the level of education since 1999**

In 2009, 68 per cent of the 30-69-year-olds had completed education providing them with professional qualifications, defined as vocational or higher education aimed at specific types of jobs. This proportion has increased by 9 percentage points from 1999 to 2009. A few more men than women have completed education courses providing them with professional qualifications (51 per cent). Another characteristic feature is the fact that the young generation is more highly educated than their parents.

#### **High frequency of vocational education**

The highest level of qualifications among the 30-69 age group was most frequently a vocational education. 38 per cent had completed this type of education, while 30 per cent had completed higher education in 2009. Since 1999, the proportions have increased by 1 and 7 percentage points, respectively.

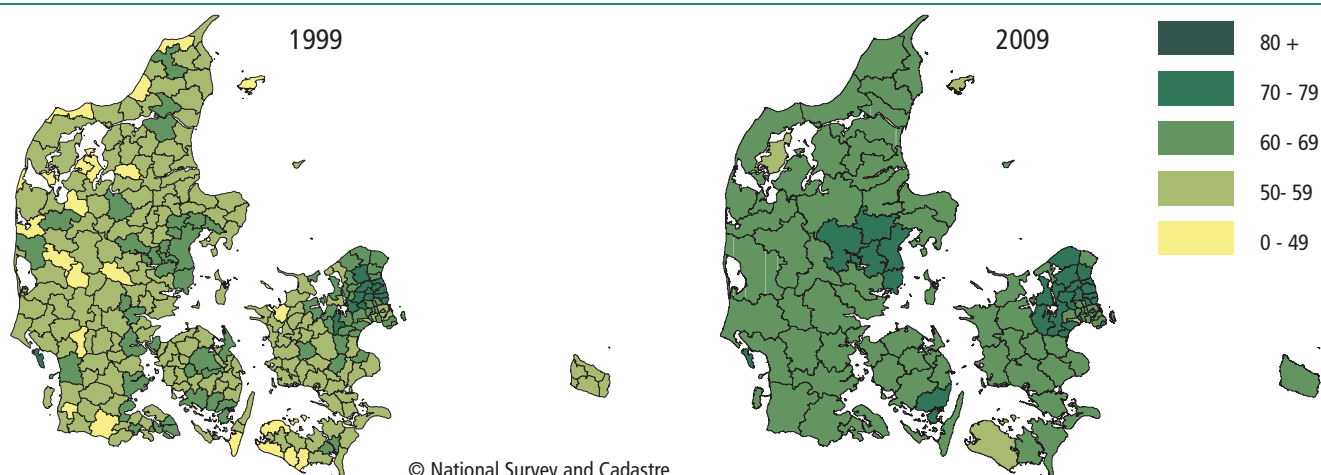
Among the remaining 32 per cent of the 30-69-year-olds of the population, 25 per cent had completed basic school education, 5 per cent general upper secondary education as the highest level of education, while there is no information for the last 3 per cent.

#### **Great regional differences**

Great regional differences are evident with regard to educational patterns within the Danish population in 2009. The proportion of individuals who have completed education courses providing them with professional qualifications vary within each region.

There is, however, a trend for the highest proportion completing education courses providing them with professional qualifications to be found around the large cities, with correspondingly lower proportions being evident in the provinces.

Figure 4 Education providing professional qualifications among 30-69-year-olds in per cent



### Differences in educational levels evened out in a geographic perspective

Over the recent decade, differences have been sharply evened out as many outlying districts have experienced a higher increase than the major urban areas. Large differences still exist within each region.

### Immigrants are in the educational system for a shorter period of time

The educational patterns of young immigrants are different from those of the population as a whole. Fewer immigrants attend an upper-secondary education, higher preparatory education, or higher commercial education and higher technical education, while more only attend basic school. These differences are, however, less significant when compared to 1999 levels; this has implied that more immigrants attend an upper-secondary education, higher preparatory education, and vocational education.

### Increasing share of descendants on medium-cycle and bachelor educations

From 1999 to 2009, there was an increase in the share of 20-24-year-olds descendants who were receiving education courses providing professional qualifications from 29 per cent to 39 per cent. Especially, medium-cycle higher education and bachelor education accounted for this increase.

## 3

### Gender and education

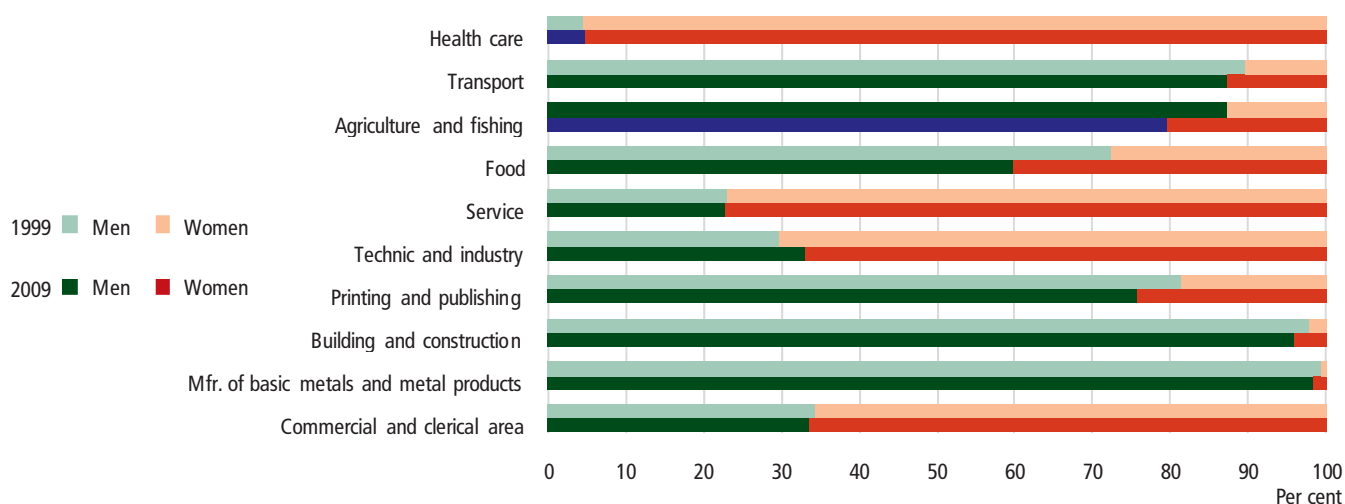
#### Sharp divisions in educational patterns

Sharp distinctions were observed in the educational patterns for 30-69-year-old men and women with regard to both educational levels and fields. More men than women had completed vocational education or long-cycle higher education in 2009, whereas more women than men had completed medium-cycle higher education in the same year. The difference in long-cycle higher education has become less pronounced during the last ten years, and since 2003 more women than men have finished a Master's degree.

As far as vocational education is concerned, there are male dominated subject areas as manufacturing of basic metals and metal products (i.e. mechanics and blacksmith), building and construction (i.e. carpenter and electrician), transport, agriculture (i.e. farmer and gardener) and printing and publishing and food (i.e. cook and butcher). On the other hand, commercial and clerical area (i.e. clerks),

technique and industry, service (i.e. hairdresser) and health care (i.e. nursing assistants) are female dominated.

**Figure 5** 30-69-year-olds with vocational education as the highest education completed

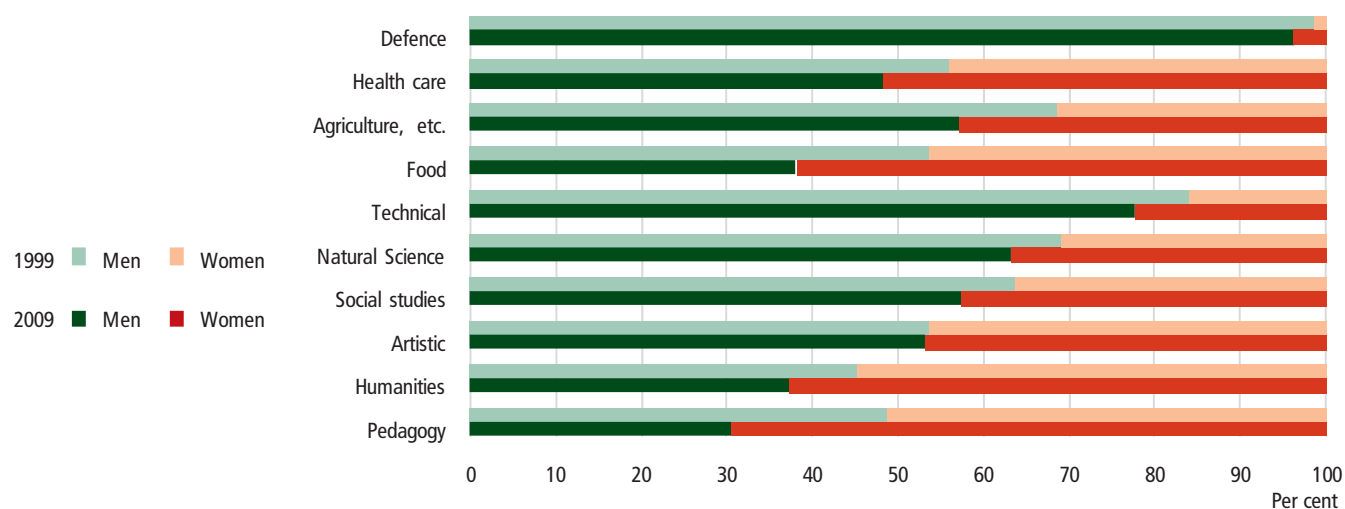


[www.statbank.dk/hfu1](http://www.statbank.dk/hfu1) and [krhf1](http://krhf1)

### Most medium-cycle courses are dominated by either men or women

As far as medium-cycle education is concerned, four in ten disciplines were sharply dominated by men: These were technical (e.g. building technicians and engineers), agriculture (e.g. forestry and landscape engineers), transport (e.g. marine engineers and shipmasters) and public security education. However, four disciplines (pedagogy, business language, the food sector, and the health sector) are dominated by women. Among the major courses are, for example, school teachers, educationalists and trained nurses.

**Figure 6** 30-69-year-olds with long-cycle higher education by field



[www.statbank.dk/hfu1](http://www.statbank.dk/hfu1) and [krhf1](http://krhf1)

### Long-cycle higher education is more mixed

As far as long-cycle higher education is concerned, five in ten disciplines were dominated by men, whereas the remaining disciplines were mixed. These were pedagogy, the humanities (e.g. MAs in Danish language), artistic studies, the food sector (MSc in dairy science), and medical studies (e.g. physicians).

#### Women increased their foothold in certain fields

Even though the educational system continued to be highly divided in terms of gender in 2009, some progress has been made during the period from 1999 to 2009 as regards the education choices made by women and men. The dividing lines remain most rigid for vocational education and training, where the proportion of women has only gone up by 2 percentage points. The greatest degree of relaxation of the gender barriers was evident in long-cycle higher education, where the proportion of women increased by 8 percentage points.

## 4

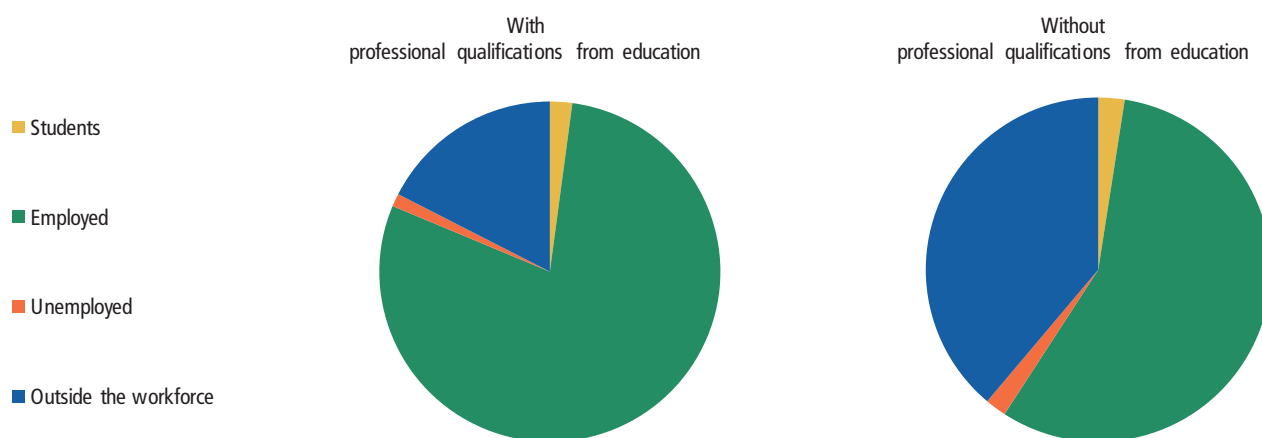
### Education and employment

#### Education has a significant effect on employment

Persons with professional qualifications have a higher employment rate than those without professional qualifications. Higher levels of education can lead to better employment.

Figure 7

The relation to the labour market for the 30-69-year-olds. 1 January 2007



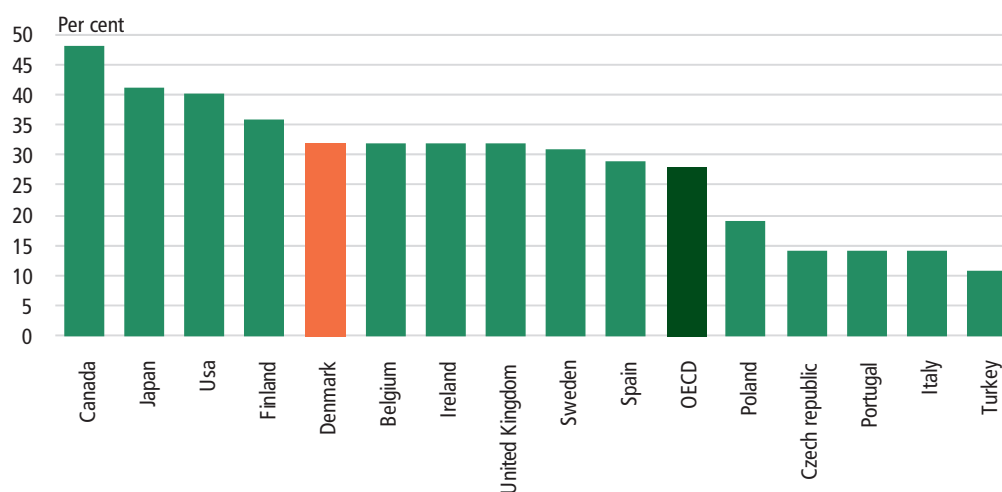
[www.statbank.dk/krhfu2](http://www.statbank.dk/krhfu2)

## 5

### Education in an international perspective

#### Level of education in Denmark above OECD average

In all OECD countries, an average of 28 per cent of the 25-64-year-olds had completed a higher education in 2007. At 32 per cent, Denmark was among those OECD countries with a high percentage. The three highest percentages were found in Canada, Japan and the United States, while Portugal, Italy and Turkey accounted for the three lowest percentages.

**Figure 8** Persons having completed further education in selected OECD countries. 2007

Source: OECD, Education at a glance 2009.

### Danes proceed through many years of education

Children that began pre-school in Denmark in 2007 will proceed through an average of approximately 17.2 years of education before completing a full-time education course providing them with professional qualifications. Australia account for the highest number of years of education with 20.1 years, followed by New Zealand with 19.7 years, then Finland and Iceland with 19.4 and 19.1 years respectively. Mexico and Turkey account for the lowest number of years of education with 13.2 and 12.4 years. The OECD average was 16.6 years in 2007.

## 6

### Culture

#### Most theatre admissions for plays

Admissions to state-subsidized theatres showed an increase of 3.6 per cent during the season of 2008-2009 compared to the previous season. Plays accounted for 41 per cent of the 2.3 million admissions, while children's theatres accounted for 19 per cent.

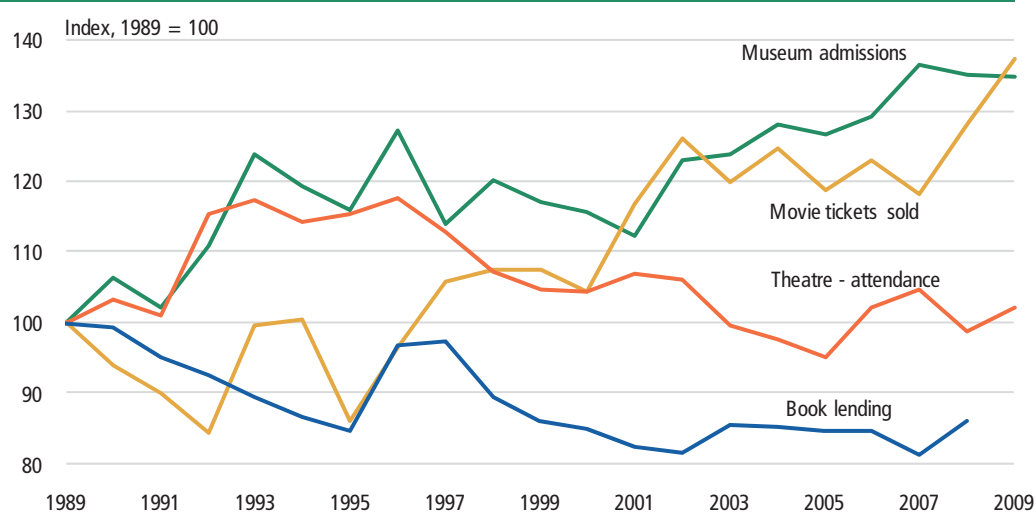
The remaining types of theatres were distributed as follows: Opera (10 per cent), operettas/musicals (10 per cent) and ballet/dance (10 per cent), while performance and revues/cabarets had a total of 10 per cent of the admissions, during the 2008-2009 seasons. The state subsidized theatres had a total of 540 performances and were shown 11,970 times.

#### Non state-subsidized theatres

During the 2008-2009 seasons the non state-subsidized theatres had a total of 184 performances. The performances were shown 3,886 times and there were a total of 662,000 admissions, corresponding to an average of 170 admissions per performance. Plays accounted for 25 per cent, children's theatres accounted for 24 per cent and operettas/musicals for 18 per cent of the admissions. The non state-subsidized theatres accounted for 23 per cent of the total number of admissions for plays in Denmark.



Figure 9 Various cultural institutions – activities



### Most sold movie tickets in 20 years

In 2009, the number of tickets sold for films screened at Danish cinemas reached 14.1 million, which was 6 per cent more than in 2008. The number of tickets sold for American films increased by 12 per cent, while Danish films decreased by 43 per cent. In 2009, the three films seen by most people were *Män som hater kvinnor*, *Flickan som lekte med elden* and *Harry Potter and the half-blood prince*.

Danish films accounted for 17 per cent of all tickets sold in 2009. Compared to the previous year, this is a decrease of 15 percentage points. The most popular Danish film was *Sorte kugler* which accounted for 404,777 tickets in 2009.

### 10.7 million visits to museums

In 2009, admission rates of Danish museums reached 10.7 million visitors. Compared to the 2008 admission rate, there has been an increase of about 2,2 per cent. Of the 249 museums in the statistics, 156 of them were subsidized by the state. In 2009, the zoological and botanical gardens had a total of 3.8 million visitors which is 100,000 more visitors than in 2008.

Figure 10 The ten highest admission rates

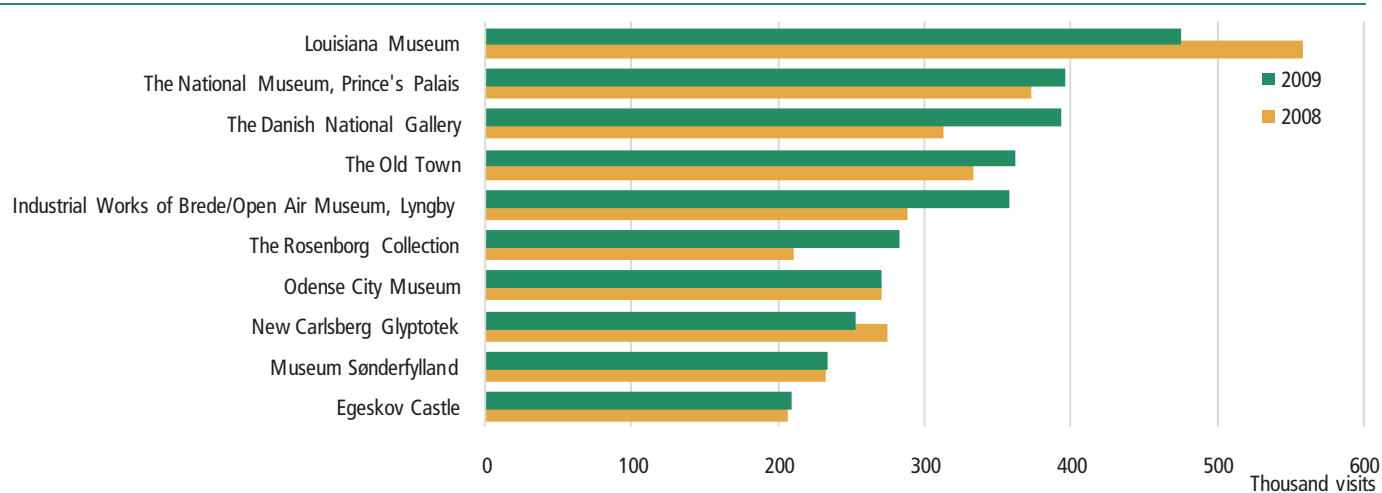


Table 101

### Louisiana accounts for the highest admission rates

The gallery Louisiana accounted for the highest admission rates of 475,000 visitors. Subsequently, the National Museum of Denmark had 397,100 visitors.

### Newspapers circulation

From 2008 to 2009 the average circulation of daily newspaper has decreased by 9.9 per cent. The average circulation of the 20 largest newspapers has decreased by 10.4 per cent. For the five largest newspapers Jyllands-Posten, Berlingske Tidende, Politiken, Ekstra Bladet and B.T. the average circulation decreased by 7.0 per cent. For Sunday newspapers the average circulation decreased by 7.5 per cent corresponding to 75.000 newspapers.

### The elderly watch most television

97 out of 100 households in Denmark have a televisionset and most of them have access to DR1 or TV2. The average viewing rates of Danes were 3 hours and 9 minutes per day in 2009 which is an increase of 22 minutes since 2008.

There is a general increase in daily television consumption with age, and persons over 55 years have by far the highest television consumption reaching an average of 3 hours and 56 minutes per day. Children aged 4 to 11 on average watch television 1 hour and 53 minutes per day, and this age group thus accounts for the lowest television consumption. In 2009, the most time spent on watching TV was accounted for by the channels TV2, DR1, TV3, DR2 and TV3+.

The number of people watching a TV channel is widely dependent on the number of people who have access to the channel. For example, almost all households in Denmark with a television set have access to DR1 and TV2, while two out of three have access to TV3.

**Figure 11**  
Average daily circulation, total

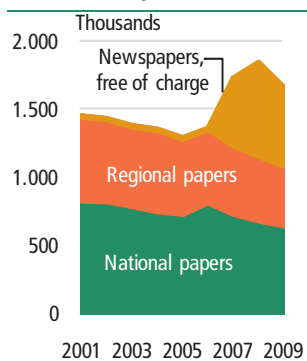


Table 82 and 83

**Figure 12** Average viewing rates

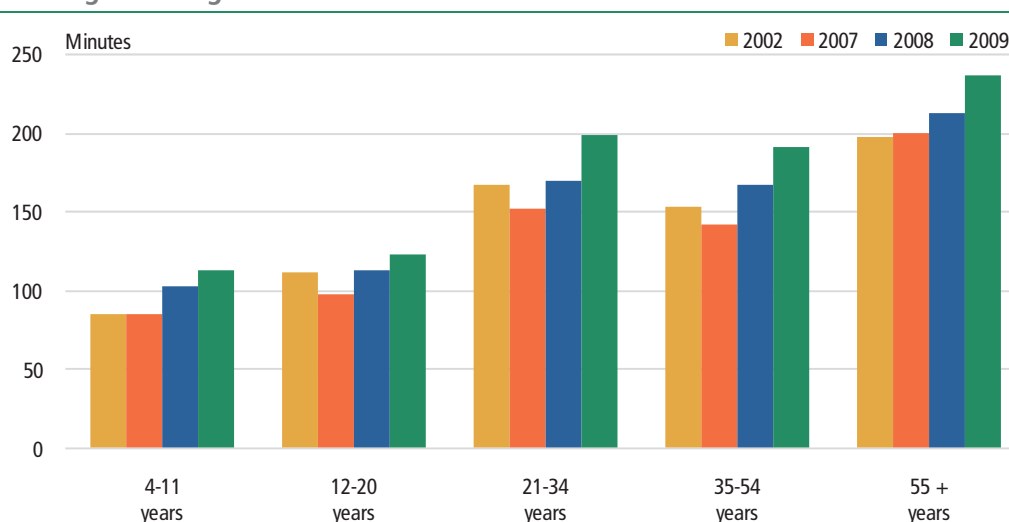


Table 89

Table 61 Educational institutions. 2008

|   | Number of institutions | Students       |                | Total            |
|---|------------------------|----------------|----------------|------------------|
|   |                        | Men            | Women          |                  |
| <b>Total</b>  | <b>3 073</b>           | <b>576 895</b> | <b>589 992</b> | <b>1 166 887</b> |
| <b>General schools</b>  | <b>2 864</b>           | <b>398 907</b> | <b>402 514</b> | <b>801 421</b>   |
| Basic schools, public   | 1 908                  | 305 580        | 288 751        | 594 331          |
| Basic schools, private  | 527                    | 47 778         | 48 669         | 96 447           |
| Continuation schools  | 260                    | 13 753         | 14 302         | 28 055           |
| Upper-secondary schools                                       | 169                    | 31 796         | 50 792         | 82 588           |
| <b>Vocational institutions of education</b>                   | <b>209</b>             | <b>177 988</b> | <b>187 478</b> | <b>365 466</b>   |
| Social and Health schools                                     | 34                     | 2 633          | 27 381         | 30 014           |
| Schools of Teacher training and Education science             | 13                     | 7 907          | 23 778         | 31 685           |
| Transport and Navigation schools                              | 10                     | 1 112          | 103            | 1 215            |
| Institutions of education within Police and Defence           | 7                      | 1 791          | 420            | 2 211            |
| Academies of Fine art and Music, Library schools etc.         | 28                     | 2 201          | 2 936          | 5 137            |
| Institutions of education within Agriculture and Food science | 13                     | 1 352          | 773            | 2 125            |
| Colleges of Social work                                       | 7                      | 703            | 2 969          | 3 672            |
| Engineering colleges and schools of Architecture              | 11                     | 4 226          | 1 716          | 5 942            |
| Universities  | 12                     | 57 721         | 66 067         | 123 788          |
| Other vocational institutions of education                    | 74                     | 98 342         | 61 335         | 159 677          |

Note: The number of institutions is the legal entities.

www.statbank.dk/u11

Table 62 Students in the educational system. 2008

| 1.10.2007 -30.09.2008             | Students 2007    | Entrance       | Graduates <sup>1</sup> | Did not complete education | Students 2008    |
|-----------------------------------|------------------|----------------|------------------------|----------------------------|------------------|
| <b>Total</b>                      | <b>1 168 272</b> | <b>416 059</b> | <b>190 148</b>         | <b>222 592</b>             | <b>1 171 164</b> |
| Pre-school class                  | 67 941           | 63 098         | -                      | 65 826                     | 65 213           |
| Basic school/preparatory          | 657 539          | 170 918        | 81 390                 | 90 938                     | 656 129          |
| General upper-secondary education | 112 863          | 47 910         | 33 376                 | 8 731                      | 118 666          |
| Vocational education and training | 124 759          | 69 505         | 29 433                 | 39 267                     | 125 137          |
| Short-cycle higher education      | 18 023           | 10 086         | 6 165                  | 2 531                      | 19 413           |
| Medium-cycle higher education     | 65 861           | 18 406         | 14 039                 | 5 931                      | 64 297           |
| Bachelor                          | 61 433           | 18 822         | 11 981                 | 6 270                      | 62 004           |
| Long-cycle higher education       | 59 853           | 17 314         | 13 764                 | 3 098                      | 60 305           |
| <b>Men, total</b>                 | <b>576 770</b>   | <b>204 698</b> | <b>88 471</b>          | <b>113 493</b>             | <b>579 336</b>   |
| Pre-school class                  | 35 100           | 32 227         | -                      | 33 690                     | 33 637           |
| Basic school/preparatory          | 334 763          | 86 531         | 40 949                 | 45 653                     | 334 691          |
| General upper-secondary education | 50 346           | 21 897         | 14 386                 | 4 531                      | 53 325           |
| Vocational education and training | 70 371           | 35 842         | 13 748                 | 21 360                     | 70 939           |
| Short-cycle higher education      | 9 412            | 5 524          | 3 331                  | 1 429                      | 10 176           |
| Medium-cycle higher education     | 20 869           | 6 151          | 4 302                  | 2 217                      | 20 501           |
| Bachelor                          | 28 482           | 8 541          | 5 405                  | 3 073                      | 28 545           |
| Long-cycle higher education       | 27 427           | 7 985          | 6 350                  | 1 540                      | 27 522           |
| <b>Women, total</b>               | <b>591 502</b>   | <b>211 361</b> | <b>101 677</b>         | <b>109 099</b>             | <b>591 828</b>   |
| Pre-school class                  | 32 841           | 30 871         | -                      | 32 136                     | 31 576           |
| Basic school/preparatory          | 322 776          | 84 387         | 40 441                 | 45 285                     | 321 438          |
| General upper-secondary education | 62 517           | 26 013         | 18 990                 | 4 200                      | 65 341           |
| Vocational education and training | 54 388           | 33 663         | 15 685                 | 17 907                     | 54 198           |
| Short-cycle higher education      | 8 611            | 4 562          | 2 834                  | 1 102                      | 9 237            |
| Medium-cycle higher education     | 44 992           | 12 255         | 9 737                  | 3 714                      | 43 796           |
| Bachelor                          | 32 951           | 10 281         | 6 576                  | 3 197                      | 33 459           |
| Long-cycle higher education       | 32 426           | 9 329          | 7 414                  | 1 558                      | 32 783           |

<sup>1</sup> Entrance of pupils to basic school comprises entrance of pupils to 1st to 6th class and to 7th and 10th class.

www.statbank.dk/u1107, u2107, u3107 and u4107

**Table 63** Students by national origin. 2008

|                                    | Basic school/<br>preparatory | General<br>upper-<br>secondary<br>school | Vocational<br>education<br>and training | Short-<br>cycle<br>higher<br>education | Medium-<br>cycle<br>higher<br>education | Bachelor | Long-cycle<br>higher<br>education | Total            |
|------------------------------------|------------------------------|--|---|--|---|----------|-----------------------------------|------------------|
|                                    | per cent                     |  |   |  |   |          |                                   |                  |
| <b>Men and women, total</b>        | <b>62</b>                    | <b>10</b>                                | <b>11</b>                               | <b>2</b>                               | <b>5</b>                                | <b>5</b> | <b>5</b>                          | <b>1 171 164</b> |
| Of whom immigrants and descendants | 60                           | 9  | 10                                      | 3                                      | 5                                       | 6        | 7                                 | 121 521          |
| Western countries                  | 37                           | 7  | 8                                       | 6                                      | 9                                       | 13       | 19                                | 22 519           |
| Non western countries              | 65                           | 10                                       | 11                                      | 3                                      | 4                                       | 4        | 4                                 | 99 000           |
| <b>Men, total</b>                  | <b>64</b>                    | <b>9</b>                                 | <b>12</b>                               | <b>2</b>                               | <b>4</b>                                | <b>5</b> | <b>5</b>                          | <b>579 336</b>   |
| Of whom immigrants and descendants | 62                           | 9  | 10                                      | 3                                      | 4                                       | 5        | 6                                 | 58 993           |
| Western countries                  | 42                           | 7  | 9                                       | 6                                      | 9                                       | 11       | 18                                | 10 216           |
| Non western countries              | 67                           | 9  | 11                                      | 3                                      | 3                                       | 4        | 4                                 | 48 777           |
| <b>Women, total</b>                | <b>60</b>                    | <b>11</b>                                | <b>9</b>                                | <b>2</b>                               | <b>7</b>                                | <b>6</b> | <b>6</b>                          | <b>591 828</b>   |
| Of whom immigrants and descendants | 57                           | 9  | 10                                      | 3                                      | 6                                       | 7        | 7                                 | 62 528           |
| Western countries                  | 33                           | 6  | 8                                       | 7                                      | 10                                      | 15       | 20                                | 12 303           |
| Non western countries              | 63                           | 10                                       | 11                                      | 3                                      | 6                                       | 5        | 4                                 | 50 223           |

www.statbank.dk/u13

**Table 64** Students enrolled in general education

|                                     | Entrance of students<br>01.10.07–30.09.08 |                | Graduates<br>01.10.07–30.09.08 |               | Disrupted<br>educations |               | Students on<br>01.10.08 <sup>1</sup> |                |
|-------------------------------------|---|----------------|--------------------------------|---------------|-------------------------|---------------|--------------------------------------|----------------|
|                                     | Men                                       | Women          | Men                            | Women         | Men                     | Women         | Men                                  | Women          |
| <b>Total</b>                        | <b>140 655</b>                            | <b>141 271</b> | <b>55 335</b>                  | <b>59 431</b> | <b>49 690</b>           | <b>47 320</b> | <b>386 910</b>                       | <b>385 692</b> |
| Pre-school class                    | 32 227                                    | 30 871         | ...                            | ...           | 33 690                  | 32 136        | 33 637                               | 31 576         |
| Basic school/preparatory            | 86 531                                    | 84 387         | 40 949                         | 40 441        | 45 159                  | 43 120        | 333 585                              | 320 351        |
| Upper-secondary school              | 10 473                                    | 16 412         | 7 330                          | 11 991        | 1 656                   | 2 074         | 27 816                               | 43 941         |
| Higher preparatory examination      | 2 260                                     | 3 698          | 1 357                          | 2 586         | 623                     | 801           | 3 817                                | 6 600          |
| Adult upper secondary school        | 145                                       | 214            | 87                             | 145           | 81                      | 82            | 233                                  | 378            |
| Entrance course to higher education | 17  | 109            | 10                             | 85            | 8                       | 22            | 19                                   | 159            |
| Higher commercial examination       | 4 834                                     | 4 280          | 3 311                          | 3 559         | 1 093                   | 955           | 12 577                               | 11 657         |
| Higher technical examination        | 3 439                                     | 1 028          | 1 955                          | 470           | 813                     | 181           | 8 156                                | 2 376          |
| Entrance examination to engineers   | 729                                       | 272            | 336                            | 154           | 257                     | 85            | 707                                  | 230            |

<sup>1</sup> The newest number of students is equal to the old number of students plus the entrance of students minus those who either graduates or leaves without examination.

www.statbank.dk/u1107, u2107 and u3107

**Table 65** Students in upper-secondary education. 2008

|                                     | Completed educations |               |               | Average mark |       |       |
|-------------------------------------|----------------------|---------------|---------------|--------------|-------|-------|
|                                     | Men                  | Women         | Total         | Men          | Women | Total |
| <b>Total</b>                        | <b>14 386</b>        | <b>18 990</b> | <b>33 376</b> | •            | •     | •     |
| Upper-secondary school              | 7 330                | 11 991        | 19 321        | 6.7          | 7.0   | 6.9   |
| Higher preparatory examination      | 1 357                | 2 586         | 3 943         | 6.2          | 6.0   | 6.1   |
| Adult upper-secondary school        | 87                   | 145           | 232           | 7.1          | 6.8   | 6.9   |
| Entrance course to higher education | 10                   | 85            | 95            | •            | •     | •     |
| Higher commercial examination       | 3 311                | 3 559         | 6 870         | 5.8          | 6.2   | 6.0   |
| Higher technical examination        | 1 955                | 470           | 2 425         | 6.5          | 7.2   | 6.6   |
| Entrance examination to engineers   | 336                  | 154           | 490           | •            | •     | •     |

www.statbank.dk/u3107 and u4107

Table 66 Students in higher education

|                                       | Entrance of students<br>01.10.07–30.09.08 |               | Graduates<br>01.10.07–30.09.08 |               | Disrupted<br>educations |              | Students <sup>1</sup><br>01.10.08 |                |
|---------------------------------------|---|---------------|--------------------------------|---------------|-------------------------|--------------|-----------------------------------|----------------|
|                                       | Men                                       | Women         | Men                            | Women         | Men                     | Women        | Men                               | Women          |
| <b>Total</b>                          | <b>28 201</b>                             | <b>36 427</b> | <b>19 388</b>                  | <b>26 561</b> | <b>3 900</b>            | <b>6 036</b> | <b>86 744</b>                     | <b>119 275</b> |
| <b>Short-cycle higher education</b>   | <b>5 524</b>                              | <b>4 562</b>  | <b>3 331</b>                   | <b>2 834</b>  | <b>1 429</b>            | <b>1 102</b> | <b>10 176</b>                     | <b>9 237</b>   |
| Educational                           | 3   | 37            | 2                              | 25            | 2                       | 14           | 8                                 | 77             |
| Communication and applied<br>language | 721                                       | 469           | 327                            | 221           | 214                     | 148          | 1 179                             | 780            |
| The artistic                          | 83  | 206           | 83                             | 155           | 12                      | 13           | 359                               | 671            |
| Social sciences                       | 2 562                                     | 2 184         | 995                            | 1 087         | 792                     | 597          | 4 792                             | 4 062          |
| Technical                             | 835                                       | 894           | 623                            | 697           | 196                     | 190          | 1 580                             | 1 860          |
| Food industry and home<br>economics   | 54  | 60            | 52                             | 46            | 14                      | 13           | 107                               | 103            |
| Agriculture and fishing               | 289                                       | 156           | 440                            | 135           | 33                      | 25           | 343                               | 254            |
| Transport, etc.                       | 428                                       | 59            | 251                            | 28            | 127                     | 10           | 487                               | 99             |
| Health care                           | 38  | 342           | 24                             | 258           | 2                       | 61           | 75                                | 946            |
| Public security                       | 511                                       | 155           | 534                            | 182           | 37                      | 31           | 1 246                             | 384            |
| <b>Medium-cycle higher education</b>  | <b>6 151</b>                              | <b>12 255</b> | <b>4 302</b>                   | <b>9 737</b>  | <b>2 217</b>            | <b>3 714</b> | <b>20 501</b>                     | <b>43 796</b>  |
| Educational                           | 1 795                                     | 5 249         | 1 623                          | 5 042         | 1 069                   | 1 962        | 7 490                             | 20 987         |
| Communication and applied<br>language | 268                                       | 348           | 192                            | 244           | 78                      | 91           | 955                               | 1 130          |
| The artistic                          | 58  | 127           | 51                             | 80            | 11                      | 12           | 219                               | 339            |
| Social sciences                       | 193                                       | 1 005         | 91                             | 683           | 80                      | 244          | 558                               | 3 292          |
| Technical                             | 2 523                                     | 799           | 1 617                          | 419           | 644                     | 206          | 7 843                             | 2 182          |
| Food industry and<br>home economics   | 41  | 513           | 20                             | 253           | 13                      | 83           | 152                               | 1 972          |
| Transport, etc.                       | 597                                       | 31            | 270                            | 4             | 106                     | 8            | 1 313                             | 61             |
| Health care                           | 532                                       | 4 166         | 343                            | 3 004         | 209                     | 1 105        | 1 660                             | 13 806         |
| Public security                       | 144                                       | 17            | 95                             | 8             | 7                       | 3            | 311                               | 27             |
| <b>Bachelor</b>                       | <b>8 541</b>                              | <b>10 281</b> | <b>5 405</b>                   | <b>6 576</b>  | <b>3 073</b>            | <b>3 197</b> | <b>28 545</b>                     | <b>33 459</b>  |
| The humanities                        | 1 828                                     | 3 765         | 1 170                          | 2 245         | 937                     | 1 504        | 7 233                             | 12 564         |
| The artistic                          | 111                                       | 66            | 39                             | 32            | 14                      | 11           | 433                               | 327            |
| Natural sciences                      | 1 260                                     | 871           | 712                            | 541           | 527                     | 334          | 4 767                             | 3 154          |
| Social sciences                       | 3 427                                     | 3 575         | 2 296                          | 2 542         | 1 144                   | 956          | 10 409                            | 11 040         |
| Technical                             | 1 270                                     | 630           | 800                            | 388           | 347                     | 138          | 3 683                             | 1 761          |
| Food industry and<br>home economics   | 18  | 42            | 8                              | 35            | 3                       | 19           | 57                                | 197            |
| Agriculture and fishing               | 72  | 257           | 55                             | 174           | 19                      | 43           | 263                               | 845            |
| Health care                           | 555                                       | 1 075         | 325                            | 619           | 82                      | 192          | 1 700                             | 3 571          |
| <b>Long-cycle higher education</b>    | <b>6 948</b>                              | <b>8 391</b>  | <b>5 713</b>                   | <b>6 934</b>  | <b>1 468</b>            | <b>1 477</b> | <b>23 914</b>                     | <b>29 542</b>  |
| The humanities                        | 168                                       | 608           | 69                             | 244           | 30                      | 148          | 1 031                             | 3 169          |
| The artistic                          | 1 259                                     | 2 243         | 950                            | 1 946         | 332                     | 577          | 4 857                             | 8 450          |
| Natural sciences                      | 53  | 45            | 59                             | 67            | 13                      | 15           | 310                               | 350            |
| Social sciences                       | 940                                       | 659           | 755                            | 549           | 202                     | 72           | 3 399                             | 2 080          |
| The humanities                        | 2 732                                     | 3 244         | 2 139                          | 2 374         | 664                     | 496          | 9 126                             | 9 767          |
| Technical                             | 1 161                                     | 552           | 1 111                          | 579           | 176                     | 65           | 3 129                             | 1 488          |
| Food industry and<br>home economics   | 17  | 68            | 16                             | 60            | 2                       | 6            | 45                                | 192            |
| Agriculture and fishing               | 121                                       | 215           | 100                            | 195           | 19                      | 26           | 347                               | 726            |
| Health care                           | 380                                       | 752           | 414                            | 914           | 26                      | 72           | 1 551                             | 3 315          |
| Public security                       | 117                                       | 5             | 100                            | 6             | 4                       | ..           | 119                               | 5              |
| <b>PhD-Degree</b>                     | <b>1 037</b>                              | <b>938</b>    | <b>637</b>                     | <b>480</b>    | <b>72</b>               | <b>81</b>    | <b>3 608</b>                      | <b>3 241</b>   |
| The humanities and theology           | 78  | 104           | 66                             | 72            | 12                      | 18           | 406                               | 465            |
| The artistic                          | 14  | 20            | 5                              | 8             | ..                      | ..           | 43                                | 48             |
| Natural sciences                      | 189                                       | 133           | 139                            | 66            | 10                      | 11           | 678                               | 464            |
| Social sciences                       | 108                                       | 98            | 58                             | 56            | 9                       | 17           | 489                               | 450            |
| Technical                             | 366                                       | 178           | 188                            | 55            | 30                      | 16           | 1 079                             | 466            |
| Food industry and<br>home economics   | 64  | 98            | 41                             | 52            | 2                       | 2            | 166                               | 254            |
| Health care                           | 218                                       | 307           | 140                            | 171           | 9                       | 17           | 747                               | 1 094          |

<sup>1</sup> The newest number of students is equal to the old number of students plus the entrance of students minus those who either graduates or leaves without examination.

**Table 67** Educational level three years after leaving basic school

|   | Year of leaving school |               |               |               |               |               |               |               |
|---|------------------------|---------------|---------------|---------------|---------------|---------------|---------------|---------------|
|   | 1998                   | 1999          | 2000          | 2001          | 2002          | 2003          | 2004          | 2005          |
| <b>Graduation class, total</b>                            | <b>56 097</b>          | <b>57 218</b> | <b>54 128</b> | <b>57 222</b> | <b>56 854</b> | <b>59 542</b> | <b>60 976</b> | <b>64 593</b> |
| <b>Total number receiving education three years after</b> | <b>23 450</b>          | <b>23 746</b> | <b>22 169</b> | <b>23 969</b> | <b>22 296</b> | <b>23 293</b> | <b>23 050</b> | <b>23 674</b> |
| Preparatory education                                     | 773                    | 607           | 219           | 86            | 82            | 88            | 118           | 189           |
| General upper secondary school                            | 2 831                  | 2 927         | 2 658         | 2 857         | 2 793         | 2 780         | 2 483         | 3 188         |
| Vocational upper secondary school                         | 2 647                  | 2 776         | 2 707         | 3 441         | 1 887         | 1 914         | 1 725         | 1 853         |
| Vocational basic education                                | 2 390                  | 2 543         | 2 637         | 3 097         | 2 865         | 2 983         | 2 712         | 2 784         |
| Vocational education                                      | 11 491                 | 11 516        | 10 654        | 10 989        | 10 823        | 11 361        | 11 157        | 11 222        |
| Short-cycle higher education                              | 598                    | 545           | 510           | 524           | 642           | 609           | 677           | 684           |
| Medium-cycle higher education                             | 926                    | 1 032         | 913           | 993           | 1 098         | 1 146         | 1 332         | 1 276         |
| Bachelor  | 1 446                  | 1 439         | 1 545         | 1 917         | 2 099         | 2 402         | 2 839         | 2 469         |
| Long-cycle higher education                               | 348                    | 361           | 326           | 65            | 7             | 10            | 7             | 9             |

[www.statbank.dk/afgang11](http://www.statbank.dk/afgang11)

**Table 68** Educational level three years after leaving general upper sec. education

|   | Year of leaving school |               |               |               |               |               |               |               |
|---|------------------------|---------------|---------------|---------------|---------------|---------------|---------------|---------------|
|   | 1998                   | 1999          | 2000          | 2001          | 2002          | 2003          | 2004          | 2005          |
| <b>Graduation class, total</b>          | <b>23 780</b>          | <b>22 594</b> | <b>20 925</b> | <b>19 906</b> | <b>20 309</b> | <b>19 439</b> | <b>19 986</b> | <b>20 823</b> |
| <b>Total number receiving education</b> | <b>17 459</b>          | <b>16 836</b> | <b>15 781</b> | <b>15 230</b> | <b>15 562</b> | <b>15 069</b> | <b>15 579</b> | <b>16 280</b> |
| Preparatory education                   | 38                     | 33            | 5             | 9             | 16            | 10            | 11            | 8             |
| General upper secondary school          | 1                      | 2             | ..            | ..            | ..            | ..            | ..            | 2             |
| Vocational upper secondary school       | 201                    | 171           | 160           | 154           | 12            | 9             | 16            | 15            |
| Vocational basic education              | 289                    | 279           | 254           | 297           | 323           | 270           | 236           | 201           |
| Vocational education                    | 1 431                  | 1 256         | 1 171         | 1 046         | 1 177         | 1 059         | 1 055         | 1 094         |
| Short-cycle higher education            | 1 300                  | 1 114         | 840           | 834           | 908           | 939           | 917           | 980           |
| Medium-cycle higher education           | 6 026                  | 5 800         | 5 470         | 5 279         | 5 422         | 5 014         | 5 219         | 5 428         |
| Bachelor                                | 6 282                  | 6 333         | 6 191         | 6 170         | 6 569         | 7 032         | 7 562         | 7 975         |
| Long-cycle higher education             | 1 891                  | 1 848         | 1 690         | 1 441         | 1 135         | 736           | 563           | 577           |

[www.statbank.dk/afgang21](http://www.statbank.dk/afgang21)

**Table 69** Highest general education completed by population. 2009

| Age on 1 Jan. 2009 | 1 -6 grade or unknown | 7 -10 grade      | Upper- secondary school, higher preparatory examination, adult upper-secondary school | Higher commercial education, higher tech. education, and entrance examination for technical colleges | Total            |
|--------------------|-----------------------|------------------|---|--|------------------|
| <b>Total</b>       | <b>188 632</b>        | <b>2 550 638</b> | <b>879 915</b>  | <b>288 752</b>   | <b>3 907 937</b> |
| 15 -24 years       | 33 206                | 466 160          | 112 942   | 46 314   | 658 622          |
| 25 -29 years       | 32 278                | 133 396          | 99 415  | 50 034   | 315 123          |
| 30 -39 years       | 41 838                | 363 688          | 232 443   | 110 337  | 748 306          |
| 40 -49 years       | 37 500                | 499 483          | 213 745   | 62 399   | 813 127          |
| 50 -59 years       | 27 712                | 521 151          | 150 254   | 15 512   | 714 629          |
| 60 -69 years       | 16 098                | 566 760          | 71 116  | 4 156  | 658 130          |
| <b>Men</b>         | <b>98 680</b>         | <b>1 354 210</b> | <b>367 868</b>  | <b>146 842</b>   | <b>1 967 600</b> |
| 15 -24 years       | 16 792                | 254 108          | 41 004  | 24 953   | 336 857          |
| 25 -29 years       | 15 996                | 80 551           | 36 025  | 25 642   | 158 214          |
| 30 -39 years       | 21 976                | 212 542          | 89 686  | 52 465   | 376 669          |
| 40 -49 years       | 21 045                | 271 557          | 89 639  | 30 287   | 412 528          |
| 50 -59 years       | 14 741                | 260 408          | 72 592  | 10 464   | 358 205          |
| 60 -69 years       | 8 130                 | 275 044          | 38 922  | 3 031  | 325 127          |
| <b>Women</b>       | <b>89 952</b>         | <b>1 196 428</b> | <b>512 047</b>  | <b>141 910</b>   | <b>1 940 337</b> |
| 15 -24 years       | 16 414                | 212 052          | 71 938  | 21 365   | 321 765          |
| 25 -29 years       | 16 282                | 52 845           | 63 390  | 24 392   | 156 909          |
| 30 -39 years       | 19 862                | 151 146          | 142 757   | 57 872   | 371 637          |
| 40 -49 years       | 16 455                | 227 926          | 124 106   | 32 112   | 400 599          |
| 50 -59 years       | 12 971                | 260 743          | 77 662  | 5 048  | 356 424          |
| 60 -69 years       | 7 968                 | 291 716          | 32 194  | 1 125  | 333 003          |

www.statbank.dk/krhfu1

**Table 70** Highest education completed analysed by age and sex. 2009

| Age on 1 Jan. 2009 | Basic school or not known | General upper-secondary education | Vocational education and training | Short-cycle higher education | Medium-cycle higher education | Bachelor   | Long-cycle higher education/ ph.d. | Unknown    | Total            |
|--------------------|---------------------------|-----------------------------------|-----------------------------------|------------------------------|-------------------------------|------------|------------------------------------|------------|------------------|
|                    | per cent                  |                                   |                                   |                              |                               |            |                                    |            |                  |
| <b>Total</b>       | <b>24.6</b>               | <b>4.7</b>                        | <b>38.0</b>                       | <b>5.8</b>                   | <b>15.1</b>                   | <b>1.1</b> | <b>8.0</b>                         | <b>2.6</b> | <b>2 934 192</b> |
| 30 -39 years       | 17.2                      | 7.0                               | 34.9                              | 7.2                          | 15.6                          | 2.5        | 11.4                               | 4.0        | 748 306          |
| 40 -49 years       | 21.2                      | 5.9                               | 39.5                              | 6.4                          | 15.1                          | 1.3        | 8.1                                | 2.6        | 813 127          |
| 50 -59 years       | 26.6                      | 3.6                               | 38.3                              | 5.4                          | 16.6                          | 0.4        | 7.0                                | 2.0        | 714 629          |
| 60 -69 years       | 34.7                      | 1.9                               | 39.1                              | 4.1                          | 13.0                          | 0.2        | 5.2                                | 1.8        | 658 130          |
| <b>Men</b>         | <b>23.6</b>               | <b>4.8</b>                        | <b>40.8</b>                       | <b>6.9</b>                   | <b>10.8</b>                   | <b>1.0</b> | <b>9.1</b>                         | <b>3.0</b> | <b>1 472 529</b> |
| 30 -39 years       | 19.5                      | 6.8                               | 37.1                              | 8.5                          | 10.0                          | 2.2        | 11.3                               | 4.5        | 376 669          |
| 40 -49 years       | 22.5                      | 5.5                               | 41.1                              | 7.8                          | 10.2                          | 1.0        | 8.8                                | 3.1        | 412 528          |
| 50 -59 years       | 23.9                      | 4.2                               | 43.1                              | 6.0                          | 11.3                          | 0.5        | 8.6                                | 2.3        | 358 205          |
| 60 -69 years       | 29.5                      | 2.2                               | 42.3                              | 4.6                          | 11.9                          | 0.3        | 7.3                                | 2.0        | 325 127          |
| <b>Women</b>       | <b>25.5</b>               | <b>4.7</b>                        | <b>35.1</b>                       | <b>4.8</b>                   | <b>19.5</b>                   | <b>1.2</b> | <b>6.9</b>                         | <b>2.2</b> | <b>1 461 663</b> |
| 30 -39 years       | 15.0                      | 7.2                               | 32.6                              | 6.0                          | 21.3                          | 2.8        | 11.6                               | 3.5        | 371 637          |
| 40 -49 years       | 20.0                      | 6.2                               | 38.0                              | 4.9                          | 20.1                          | 1.5        | 7.3                                | 2.0        | 400 599          |
| 50 -59 years       | 29.4                      | 3.0                               | 33.6                              | 4.7                          | 21.9                          | 0.3        | 5.3                                | 1.8        | 356 424          |
| 60 -69 years       | 39.9                      | 1.6                               | 36.0                              | 3.5                          | 14.1                          | 0.1        | 3.1                                | 1.6        | 333 003          |

www.statbank.dk/krhfu1

**Table 71** Highest education completed analysed by region. 2009

| 30-69 year-olds<br>Place of residence on<br>1 Jan. 2009 | Basic school<br>or not<br>known | General<br>upper-<br>secondary<br>education | Vocational<br>education<br>and training | Short-cycle<br>higher<br>education | Medium-<br>cycle higher<br>education | Bachelor      | Long-cycle<br>higher<br>education/<br>ph.d. | Not<br>stated | Total            |
|---|---------------------------------|---|---|------------------------------------|--------------------------------------|---------------|---|---------------|------------------|
| <b>Denmark, total</b>                                   | <b>720 880</b>                  | <b>138 494</b>                              | <b>1 113 812</b>                        | <b>171 503</b>                     | <b>444 273</b>                       | <b>33 252</b> | <b>234 702</b>                              | <b>77 276</b> | <b>2 934 192</b> |
| Region Hovedstaden                                      | 177 015                         | 60 345                                      | 285 979                                 | 50 944                             | 140 703                              | 16 143        | 122 639                                     | 30 458        | 884 226          |
| København   | 52 592                          | 23 009                                      | 65 639                                  | 14 356                             | 41 668                               | 7 807         | 45 453                                      | 13 865        | 264 389          |
| Frederiksberg   | 7 007                           | 4 381                                       | 11 848                                  | 2 933                              | 8 787                                | 1 449         | 11 669                                      | 2 287         | 50 361           |
| Region Sjælland   | 121 443                         | 17 326                                      | 192 154                                 | 25 528                             | 63 857                               | 3 123         | 22 799                                      | 9 199         | 455 429          |
| Region Syddanmark                                       | 172 401                         | 22 762                                      | 256 579                                 | 38 473                             | 96 319                               | 5 134         | 29 909                                      | 15 652        | 637 229          |
| Region Midtjylland                                      | 162 055                         | 27 978                                      | 255 019                                 | 39 882                             | 100 735                              | 6 635         | 44 136                                      | 14 705        | 651 145          |
| Region Nordjylland                                      | 87 966                          | 10 083                                      | 124 081                                 | 16 676                             | 42 659                               | 2 217         | 15 219                                      | 7 262         | 306 163          |

[www.statbank.dk/krhf1](http://www.statbank.dk/krhf1)

**Table 72** Highest completed education, by labour market. 2008

| 30-69 year-olds                   | Students      | Non-students     |                 |                            | Total            |
|-----------------------------------|---------------|------------------|-----------------|----------------------------|------------------|
|                                   |               | Employed         | Unem-<br>ployed | Not in the<br>labour force |                  |
| <b>Total</b>                      | <b>65 605</b> | <b>2 094 060</b> | <b>43 683</b>   | <b>718 180</b>             | <b>2 921 528</b> |
| Basic school/not known            | 11 790        | 440 001          | 16 243          | 346 910                    | 814 944          |
| General upper-secondary education | 11 640        | 99 153           | 2 713           | 22 707                     | 136 213          |
| Vocational education and training | 16 388        | 842 407          | 13 897          | 237 201                    | 1 109 893        |
| Higher education                  | 25 787        | 712 499          | 10 830          | 111 362                    | 860 478          |
| <b>Men</b>                        | <b>26 671</b> | <b>1 110 290</b> | <b>21 055</b>   | <b>308 513</b>             | <b>1 466 529</b> |
| Basic school/not known            | 4 976         | 247 536          | 7 924           | 136 735                    | 397 171          |
| General upper-secondary education | 5 240         | 51 942           | 1 321           | 10 397                     | 68 900           |
| Vocational education and training | 5 823         | 473 113          | 6 933           | 114 262                    | 600 131          |
| Higher education                  | 10 632        | 337 699          | 4 877           | 47 119                     | 400 327          |
| <b>Women</b>                      | <b>38 934</b> | <b>983 770</b>   | <b>22 628</b>   | <b>409 667</b>             | <b>1 454 999</b> |
| Basic school/not known            | 6 814         | 192 465          | 8 319           | 210 175                    | 417 773          |
| General upper-secondary education | 6 400         | 47 211           | 1 392           | 12 310                     | 67 313           |
| Vocational education and training | 10 565        | 369 294          | 6 964           | 122 939                    | 509 762          |
| Higher education                  | 15 155        | 374 800          | 5 953           | 64 243                     | 460 151          |

[www.statbank.dk/krhf2](http://www.statbank.dk/krhf2)



| Table 73 | Completed educations within adult and supplementary education |                       |                       |
|----------|---|-----------------------|-----------------------|
|          |   | School year 2006/2007 | School year 2007/2008 |
|          | Upper secondary education                                     | 1 894                 | 1 383                 |
|          | Vocational education and training                             | 256                   | 303                   |
|          | Short-cycle higher education                                  | 1 564                 | 1 535                 |
|          | Medium-cycle higher education                                 | 3 634                 | 2 759                 |
|          | Bachelor  | 84                    | 82                    |
|          | Long-cycle higher education                                   | 1 157                 | 911                   |

[www.statbank.dk/veu4](http://www.statbank.dk/veu4)

| Table 74 | Participants in courses by private course organizers |                |                |                |
|----------|--|----------------|----------------|----------------|
|          |  | 2007           | 2008           | Change         |
|          | <b>Total</b>   | <b>278 459</b> | <b>238 232</b> | <b>-40 227</b> |
|          | Private commercial organizers of courses             | 123 520        | 103 977        | -19 543        |
|          | Employer and trade organizations                     | 32 398         | 33 917         | 1 519          |
|          | Employee organizations                               | 56 671         | 56 302         | -369           |
|          | Associations of Graduates                            | 21 868         | 19 996         | -1 872         |
|          | Non-profit institutions, associations and societies  | 40 840         | 20 156         | -20 684        |
|          | Adult education associations                         | 3 162          | 3 884          | 722            |

[www.statbank.dk/konpriv1](http://www.statbank.dk/konpriv1)

| Table 75 | Participants in courses by private course organizers by type of course |                |                |                |
|----------|--|----------------|----------------|----------------|
|          |  | 2007           | 2008           | Change         |
|          | <b>Total</b>   | <b>278 459</b> | <b>238 232</b> | <b>-40 227</b> |
|          | Management and human resource development                              | 44 109         | 26 934         | -17 175        |
|          | Law, economics, insurance and financing                                | 23 481         | 38 378         | 14 897         |
|          | Purchasing, sales and service  | 26 761         | 8 272          | -18 489        |
|          | Exports  | 243            | 48             | -195           |
|          | Edp  | 50 046         | 35 498         | -14 548        |
|          | Presentation and training technique                                    | 3 047          | 894            | -2 153         |
|          | Communication and media technique                                      | 4 207          | 2 848          | -1 359         |
|          | Environment and safety   | 7 963          | 9 849          | 1 886          |
|          | Personal development and training                                      | 13 589         | 7 273          | -6 316         |
|          | Language   | 3 294          | 2 558          | -736           |
|          | Politics, cooperation, etc.  | 53 360         | 54 209         | 849            |
|          | Other courses, including special training                              | 45 197         | 47 320         | 2 123          |
|          | General courses, not further specified                                 | 3 162          | 4 151          | 989            |

[www.statbank.dk/konpriv1](http://www.statbank.dk/konpriv1)

**Table 76** Participants in courses of adult and supplementary education. 2007/2008

|  | Highest completed level of education |                                   |                                   |                              |                               |              |                             |               | Total            |
|--|--------------------------------------|-----------------------------------|-----------------------------------|------------------------------|-------------------------------|--------------|-----------------------------|---------------|------------------|
|  | Basic school                         | General upper secondary education | Vocational education and training | Short-cycle higher education | Medium-cycle higher education | Bachelor     | Long-cycle higher education | Not stated    |                  |
| Public courses   |                                      |                                   |                                   |                              |                               |              |                             |               |                  |
| <b>Total<sup>1</sup></b>   | <b>303 504</b>                       | <b>84 103</b>                     | <b>383 086</b>                    | <b>59 680</b>                | <b>81 517</b>                 | <b>8 350</b> | <b>28 778</b>               | <b>82 059</b> | <b>1 031 077</b> |
| <b>Participants in general and preparatory courses</b>             | <b>117 128</b>                       | <b>20 887</b>                     | <b>38 658</b>                     | <b>5 143</b>                 | <b>11 581</b>                 | <b>653</b>   | <b>4 288</b>                | <b>43 417</b> | <b>241 755</b>   |
| Basic school   | 71 087                               | 6 179                             | 26 806                            | 3 192                        | 7 541                         | 136          | 1 982                       | 21 124        | 138 047          |
| Of which: General adult education                                  | 67 642                               | 5 227                             | 25 624                            | 2 926                        | 7 053                         | 132          | 1 750                       | 9 308         | 119 662          |
| Danish lessons by language centres                                 | 3 445                                | 952                               | 1 182                             | 266                          | 488                           | 4            | 232                         | 11 816        | 18 385           |
| Preparatory education  | 2 318                                | 2 776                             | 986                               | 456                          | 759                           | 163          | 949                         | 19 702        | 28 109           |
| Of which: General and vocational courses                           | 1 655                                | 2 109                             | 325                               | 51                           | 182                           | 31           | 30                          | 1 983         | 6 366            |
| Danish lessons by language centres                                 | 663                                  | 667                               | 661                               | 405                          | 577                           | 132          | 919                         | 17 719        | 21 743           |
| Upper secondary education  | 43 652                               | 11 712                            | 10 698                            | 1 429                        | 3 259                         | 349          | 1 343                       | 2 576         | 75 018           |
| Of which: Higher prep. courses                                     | 43 211                               | 6 074                             | 10 505                            | 1 330                        | 3 156                         | 304          | 1 315                       | 2 293         | 68 188           |
| Entrance courses to long-cycle higher education                    | 441                                  | 5 638                             | 193                               | 99                           | 103                           | 45           | 28                          | 283           | 6 830            |
| Vocational education at second level                               | 71                                   | 220                               | 168                               | 66                           | 22                            | 5            | 14                          | 15            | 581              |
| <b>Participants in vocational courses</b>                          | <b>186 376</b>                       | <b>63 216</b>                     | <b>344 428</b>                    | <b>54 537</b>                | <b>69 936</b>                 | <b>7 697</b> | <b>24 490</b>               | <b>38 642</b> | <b>789 322</b>   |
| Vocational training and main courses                               | 3 000                                | 1 691                             | 3 999                             | 666                          | 760                           | 116          | 307                         | 494           | 11 033           |
| Supplementary education of semi-skilled and skilled manual workers | 180 232                              | 50 656                            | 322 071                           | 44 708                       | 36 603                        | 4 688        | 11 998                      | 34 693        | 685 649          |
| Of which: Manufact. and metal produc.                              | 36 588                               | 7 462                             | 66 195                            | 8 652                        | 4 522                         | 501          | 1 974                       | 9 563         | 135 457          |
| Distributive trade, administration, communication and management   | 44 116                               | 23 714                            | 113 916                           | 18 560                       | 16 428                        | 2 840        | 6 697                       | 7 765         | 234 036          |
| Service sector   | 15 943                               | 4 193                             | 14 064                            | 1 455                        | 1 826                         | 222          | 419                         | 2 711         | 40 833           |
| Construction, manufacturing  | 19 189                               | 2 378                             | 27 662                            | 2 898                        | 1 581                         | 162          | 466                         | 2 519         | 56 855           |
| Dairy industry and agriculture                                     | 5 040                                | 727                               | 7 771                             | 2 815                        | 568                           | 67           | 269                         | 415           | 17 672           |
| Kitchens, hotels, restaurants, baker's shops and meat industry     | 6 253                                | 1 371                             | 5 081                             | 618                          | 866                           | 76           | 130                         | 2 465         | 16 860           |
| Transport sector   | 34 951                               | 7 264                             | 36 572                            | 5 514                        | 3 603                         | 423          | 1 018                       | 6 345         | 95 690           |
| Educational, social and health services                            | 7 847                                | 1 220                             | 27 387                            | 1 224                        | 5 152                         | 134          | 262                         | 781           | 44 007           |
| Other courses  | 10 305                               | 2 327                             | 23 423                            | 2 972                        | 2 057                         | 263          | 763                         | 2 129         | 44 239           |
| Short-cycle higher education                                       | 2 059                                | 3 523                             | 10 902                            | 4 124                        | 2 283                         | 617          | 1 790                       | 734           | 26 032           |
| Medium-cycle higher education                                      | 914                                  | 6 005                             | 6 798                             | 4 377                        | 25 682                        | 1 344        | 5 140                       | 1 179         | 51 439           |
| Bachelor   | 75                                   | 660                               | 211                               | 193                          | 597                           | 268          | 1 316                       | 316           | 3 636            |
| Long-cycle higher education  | 96                                   | 681                               | 447                               | 469                          | 4 011                         | 664          | 3 939                       | 1 226         | 11 533           |

<sup>1</sup> Includes only courses which are publicly financed and supervised.

Table 77 National Church divisions. 2010

| 1 January               | Church divisions |              |            |              |              |
|-------------------------|------------------|--------------|------------|--------------|--------------|
|                         | Churches         | Vicars       | Deaneries  | Pastorates   | Parishes     |
|                         | number           |              |            |              |              |
| <b>All Denmark</b>      | <b>2 345</b>     | <b>2 046</b> | <b>107</b> | <b>1 286</b> | <b>2 116</b> |
| København Diocese       | 119              | 215          | 11         | 83           | 103          |
| Helsingør Diocese       | 163              | 244          | 13         | 121          | 142          |
| Roskilde Diocese        | 339              | 275          | 13         | 178          | 316          |
| Lolland-Falster Diocese | 109              | 59           | 4          | 50           | 101          |
| Fyn Diocese             | 244              | 186          | 12         | 137          | 225          |
| Haderslev Diocese       | 186              | 187          | 7          | 130          | 170          |
| Ribe Diocese            | 213              | 161          | 8          | 118          | 184          |
| Århus Diocese           | 355              | 315          | 14         | 180          | 334          |
| Viborg Diocese          | 289              | 185          | 11         | 135          | 257          |
| Aalborg Diocese         | 328              | 219          | 14         | 154          | 284          |

Source: Ministry of Ecclesiastical Affairs and Statistics Denmark

Table 78 Religious ceremonies at the National Church. 2009

|                         | Baptisms<br>as per cent of<br>children born in<br>2009 | Confirmations<br>in 2009<br>as per cent of<br>14-15 year-olds<br>1 January 2010 | Church<br>funerals<br>as per cent of<br>all deaths<br>2009 |
|-------------------------|--|---|--|
|                         | per cent   |   |  |
| <b>All Denmark</b>      | <b>81.1</b>  | <b>69.9</b>   | <b>90.3</b>  |
| Copenhagen Diocese      | 49.0   | 43.4  | 78.8   |
| Helsingør Diocese       | 76.1   | 59.4  | 84.9   |
| Roskilde Diocese        | 94.4   | 71.0  | 91.4   |
| Lolland-Falster Diocese | 97.9   | 75.6  | 88.8   |
| Fyn Diocese             | 88.6   | 77.4  | 92.7   |
| Haderslev Diocese       | 89.2   | 75.0  | 94.7   |
| Ribe Diocese            | 95.8   | 78.5  | 95.0   |
| Århus Diocese           | 85.5   | 71.1  | 93.3   |
| Viborg Diocese          | 94.9   | 84.1  | 96.5   |
| Aalborg Diocese         | 92.5   | 78.4  | 95.5   |

Source: Ministry of Ecclesiastical Affairs

www.statbank.dk/km44

Table 79 Membership of the National Church. 2010

|              | National Church members as percentage of population |             |             |                       |   |             |             | National Church members |
|--------------|---|-------------|-------------|-----------------------|---|-------------|-------------|-------------------------|
|              | All Denmark   |             |             | Dioceses of residence |   |             |             |                         |
|              | Males   | Females     | Total       | Copenhagen            | Helsingør, Roskilde and Lolland-Falster | Funen       | Jutland     |                         |
|              | per cent  |             |             |                       |   |             |             |                         |
| 1 January    |   |             |             |                       |   |             |             |                         |
| <b>Total</b> | <b>79.1</b>   | <b>82.7</b> | <b>80.9</b> | <b>64.1</b>           | <b>79.0</b>                             | <b>84.7</b> | <b>86.4</b> | <b>4 479</b>            |
| <b>Age:</b>  |   |             |             |                       |   |             |             |                         |
| 0-4 years    | 68.9  | 68.8        | 68.9        | 44.7                  | 66.7                                    | 73.1        | 77.1        | 225                     |
| 5-9 years    | 76.9  | 77.3        | 77.1        | 50.1                  | 74.4                                    | 80.5        | 84.3        | 254                     |
| 10-14 years  | 80.3  | 80.8        | 80.5        | 54.9                  | 77.5                                    | 83.9        | 86.8        | 278                     |
| 15-19 years  | 82.2  | 83.8        | 83.0        | 61.3                  | 80.1                                    | 86.0        | 88.3        | 291                     |
| 20-29 years  | 73.8  | 75.8        | 74.8        | 63.3                  | 71.2                                    | 79.7        | 81.6        | 477                     |
| 30-39 years  | 75.8  | 79.0        | 77.4        | 62.1                  | 75.5                                    | 82.8        | 84.2        | 573                     |
| 40-49 years  | 78.8  | 83.9        | 81.3        | 65.8                  | 79.9                                    | 84.8        | 85.7        | 662                     |
| 50-59 years  | 79.6  | 84.4        | 82.0        | 66.7                  | 79.7                                    | 84.5        | 86.5        | 586                     |
| 60-69 years  | 83.8  | 88.8        | 86.3        | 72.4                  | 83.8                                    | 89.2        | 90.7        | 580                     |
| 70-79 years  | 88.9  | 92.2        | 90.7        | 81.3                  | 88.4                                    | 92.6        | 93.8        | 341                     |
| 80 years +   | 91.8  | 94.0        | 93.2        | 87.8                  | 91.6                                    | 94.9        | 95.4        | 212                     |

[www.statbank.dk/km55](http://www.statbank.dk/km55)

**Table 80** Books published. 2009

|   |                  | Books and pamphlets        |                             |                |                     |               |                                   |                     |
|---|------------------|----------------------------|-----------------------------|----------------|---------------------|---------------|-----------------------------------|---------------------|
|   |                  | Type                       |                             | Edition        |                     | Total         | Of which                          |                     |
|   |                  | Pamphlets<br>(17-48 pages) | Books<br>(over 48<br>pages) | First editions | Revised<br>editions |               | School text<br>books <sup>1</sup> | Children's<br>books |
| Decimal<br>classification               | number of titles |                            |                             |                |                     |               |                                   |                     |
| <b>Total</b>                            |                  | <b>3 601</b>               | <b>10 066</b>               | <b>11 451</b>  | <b>2 216</b>        | <b>13 667</b> | <b>828</b>                        | <b>2 012</b>        |
| <b>Fiction, total</b>                   | 82-88            | <b>1 086</b>               | <b>2 683</b>                | <b>3 108</b>   | <b>661</b>          | <b>3 769</b>  | <b>330</b>                        | <b>1 562</b>        |
| Novels and short stories                |                  | 44                         | 1 492                       | 1 094          | 442                 | 1 536         | 13                                | 1 341               |
| Plays                                   |                  | 6                          | 43                          | 48             | 1                   | 49            | -                                 | 7                   |
| Poetry                                  |                  | 59                         | 152                         | 201            | 10                  | 211           | -                                 | 43                  |
| Comics, etc.                            |                  | 23                         | 71                          | 92             | 2                   | 94            | -                                 | 171                 |
| Books for children and<br>young persons |                  | 954                        | 925                         | 1 673          | 206                 | 1 879         | 317                               | •                   |
| <b>Non-fiction, total</b>               | 00-81.89-99      | <b>2 515</b>               | <b>7 383</b>                | <b>8 343</b>   | <b>1 555</b>        | <b>9 898</b>  | <b>498</b>                        | <b>450</b>          |
| General                                 | 00-07            | 56                         | 231                         | 272            | 15                  | 287           | 6                                 | 5                   |
| Philosophy                              | 10-19            | 71                         | 346                         | 357            | 60                  | 417           | 9                                 | 5                   |
| Religion                                | 20-29            | 67                         | 276                         | 312            | 31                  | 343           | 13                                | 25                  |
| Sociology                               | 30-39, 59        | 659                        | 1 732                       | 1 885          | 506                 | 2 391         | 76                                | 50                  |
| Geography and travel                    | 40-49            | 113                        | 318                         | 313            | 118                 | 431           | 10                                | 13                  |
| Natural sciences                        | 50-58            | 282                        | 436                         | 642            | 76                  | 718           | 119                               | 113                 |
| Applied sciences                        | 60-69            | 721                        | 2 078                       | 2 332          | 467                 | 2 799         | 48                                | 119                 |
| Arts, games, sports                     | 70-79            | 317                        | 711                         | 955            | 73                  | 1 028         | 36                                | 78                  |
| Literature, languages                   | 80-81.89         | 71                         | 285                         | 287            | 69                  | 356           | 138                               | 12                  |
| History                                 | 90-99            | 158                        | 970                         | 988            | 140                 | 1 128         | 43                                | 30                  |

<sup>1</sup> Not including text books for higher-education establishments, further education, adult education, and self-study.

Source: Danish Bibliographic Centre

**Table 81** Books translated. 2009

|                            | Original language |            |                              |                      |            |            |          | Danish<br>translations,<br>total |                    |
|----------------------------|-------------------|------------|------------------------------|----------------------|------------|------------|----------|----------------------------------|--------------------|
|                            | Swedish           | Norwegian  | Other<br>Nordic<br>languages | English/<br>American | German     | French     | Russian  |                                  | Other<br>languages |
|                            | number of titles  |            |                              |                      |            |            |          |                                  |                    |
| <b>Translations, total</b> | <b>403</b>        | <b>129</b> | <b>33</b>                    | <b>1 909</b>         | <b>236</b> | <b>143</b> | <b>8</b> | <b>283</b>                       | <b>3 144</b>       |
| Fiction                    | 284               | 90         | 28                           | 1 204                | 153        | 106        | 5        | 233                              | 2 103              |
| Non-fiction                | 119               | 39         | 5                            | 705                  | 83         | 37         | 3        | 50                               | 1 041              |

Source: Danish Bibliographic Centre

**Table 82** Daily newspapers

|  | Number of daily newspapers |           |           |           |           |           | Circulation  |              |              |              |              |            |
|--|----------------------------|-----------|-----------|-----------|-----------|-----------|--------------|--------------|--------------|--------------|--------------|------------|
|  | Weekdays <sup>1</sup>      |           |           | Sundays   |           |           | Weekdays     |              |              | Sundays      |              |            |
|  | 2007                       | 2008      | 2009      | 2007      | 2008      | 2009      | 2007         | 2008         | 2009         | 2007         | 2008         | 2009       |
|  | — thousands —              |           |           |           |           |           |              |              |              |              |              |            |
| <b>Daily newspapers, total<sup>2</sup></b> | <b>36</b>                  | <b>37</b> | <b>37</b> | <b>10</b> | <b>10</b> | <b>10</b> | <b>1 728</b> | <b>1 843</b> | <b>1 660</b> | <b>1 077</b> | <b>1 006</b> | <b>931</b> |
| <b>By size of cir. per issue:</b>          |                            |           |           |           |           |           |              |              |              |              |              |            |
| Under 10 000                               | 6                          | 6         | 10        | -         | -         | -         | 30           | 28           | 63           | -            | -            | -          |
| 10 000-19 999                              | 11                         | 12        | 10        | -         | -         | -         | 146          | 160          | 150          | -            | -            | -          |
| 20 000-29 999                              | 5                          | 6         | 4         | -         | -         | -         | 113          | 142          | 98           | -            | -            | -          |
| 30 000-49 999                              | 3                          | 1         | 1         | 1         | 1         | 1         | 114          | 47           | 44           | 42           | 38           | 31         |
| 50 000-99 999                              | 6                          | 6         | 6         | 4         | 4         | 4         | 456          | 433          | 404          | 293          | 276          | 253        |
| 100 000 +                                  | 5                          | 6         | 6         | 5         | 5         | 5         | 870          | 1 032        | 900          | 743          | 693          | 648        |

<sup>1</sup> Included free newspapers 24timer, Urban and Metroxpress. <sup>2</sup> Average circulation (papers per day) measured in the first half year of 2009.

Source: *Dansk Oplagsbulletin 2009* (Bulletin of the Danish Audit Bureau of Circulations)

**Table 83** The 20 largest daily newspapers

|   | Circulation <sup>1</sup> |      |         |      |
|---|--------------------------|------|---------|------|
|   | Weekdays <sup>2</sup>    |      | Sundays |      |
|   | 2008                     | 2009 | 2008    | 2009 |
|   | — thousands —            |      |         |      |
| MetroXpress                             | 228                      | 228  | •       | •    |
| 24timer                                 | 246                      | 180  | •       | •    |
| Urban                                   | 208                      | 162  | •       | •    |
| Jyllands-Posten                         | 129                      | 120  | 174     | 161  |
| Politiken                               | 110                      | 108  | 140     | 140  |
| Berlingske tidende                      | 113                      | 103  | 138     | 125  |
| Ekstra Bladet                           | 91                       | 84   | 122     | 113  |
| B.T.                                    | 84                       | 75   | 120     | 108  |
| Børsen                                  | 72                       | 73   | •       | •    |
| JydskeVestkysten                        | 71                       | 65   | 78      | 72   |
| Nordjyske Stiftstidende                 | 62                       | 57   | 69      | 64   |
| Fyens Stiftstidende                     | 55                       | 51   | 67      | 63   |
| Frederiksborg Amts Avis                 | 47                       | 44   | •       | •    |
| Kristeligt Dagblad                      | 25                       | 26   | •       | •    |
| ErhvervsBladet                          | 26                       | 25   | •       | •    |
| Århus Stiftstidende                     | 28                       | 24   | 38      | 31   |
| Information                             | 22                       | 22   | •       | •    |
| Vejle Amts Folkeblad/Fredericia Dagblad | 21                       | 20   | •       | •    |
| Lolland-Falsters Folketidende           | 19                       | 19   | •       | •    |
| Sjællandske                             | 20                       | 18   | •       | •    |

<sup>1</sup> Average circulation (papers per day) measured in the first half of 2009. <sup>2</sup> Include free newspapers 24timer, Urban and MetroXpress.

Source: *Dansk Oplagsbulletin 2009* (Bulletin of the Danish Audit Bureau of Circulations)

| Table 84              | Magazines   |      |      |
|-----------------------|-------------|------|------|
|                       | Circulation |      |      |
|                       | 2007        | 2008 | 2009 |
|                       | thousands   |      |      |
| Billed Bladet         | 201         | 195  | 193  |
| Familie Journalen     | 204         | 194  | 185  |
| Se & Hør              | 188         | 188  | 169  |
| Ude og Hjemme         | 168         | 162  | 158  |
| Hjemmet               | 158         | 149  | 143  |
| Her & Nu              | 118         | 109  | 108  |
| Ugebladet Søndag      | 94          | 90   | 83   |
| Bo Bedre              | 84          | 84   | 80   |
| Alt for damerne       | 76          | 73   | 66   |
| Illustreret Videnskab | 68          | 71   | 65   |
| Femina                | 71          | 65   | 61   |
| Kig Ind               | 67          | 67   | 60   |
| I Form                | 63          | 69   | 57   |
| Woman                 | 46          | 49   | 50   |
| Anders And og Co.     | 61          | 55   | 48   |
| M!                    | 46          | 46   | 46   |
| Isabellas             | 41          | 45   | 44   |
| Costume               | 40          | 42   | 43   |
| Vi unge               | 45          | 45   | 43   |
| Mad & Bolig           | 40          | 38   | 41   |

Note: Included are major, consumer-paid magazines. Free magazines are not included.

Source: *Dansk Oplagsbulletin 2009* (Bulletin of the Danish Audit Bureau of Circulations)

| Table 85                                   | Advertising expenditure |              |               |              |               |              |
|--|-------------------------|--------------|---------------|--------------|---------------|--------------|
|  | 2006                    |              | 2007          |              | 2008          |              |
|  | DKK mio.                | per cent     | DKK mio.      | per cent     | DKK mio.      | per cent     |
| <b>Advertising expenditure, total</b>      | <b>27 983</b>           | <b>100.0</b> | <b>29 180</b> | <b>100.0</b> | <b>27 633</b> | <b>100.0</b> |
| <b>Press advertising turnover, total</b>   | <b>8 665</b>            | <b>31.0</b>  | <b>8 646</b>  | <b>29.6</b>  | <b>7 936</b>  | <b>28.7</b>  |
| Daily papers                               | 3 493                   | 12.5         | 3 229         | 11.1         | 2 735         | 9.9          |
| Magazines                                  | 454                     | 1.6          | 466           | 1.6          | 437           | 1.6          |
| Professional journals, etc.                | 987                     | 3.6          | 1 007         | 3.4          | 999           | 3.6          |
| Local papers                               | 2 467                   | 8.8          | 2 704         | 9.3          | 2 554         | 9.2          |
| Other                                      | 1 264                   | 4.5          | 1 240         | 4.2          | 1 211         | 4.4          |
| <b>Other advertising activities, total</b> | <b>19 318</b>           | <b>69.0</b>  | <b>20 534</b> | <b>70.4</b>  | <b>19 697</b> | <b>71.3</b>  |
| Radio                                      | 283                     | 1.0          | 285           | 1.0          | 250           | 0.9          |
| TV   | 2 471                   | 8.8          | 2 516         | 8.6          | 2 431         | 8.8          |
| Cinemas                                    | 55                      | 0.2          | 56            | 0.2          | 60            | 0.2          |
| Printed matter                             | 6 405                   | 22.9         | 6 477         | 22.2         | 6 705         | 24.3         |
| Sports sponsorship                         | 1 136                   | 4.1          | 1 182         | 4.0          | 1 258         | 4.6          |
| Outdoor advertising                        | 405                     | 1.4          | 473           | 1.6          | 516           | 1.9          |
| Internet                                   | 1 794                   | 6.4          | 2 502         | 8.6          | 2 926         | 10.6         |
| Exhibitions and conferences                | 1 363                   | 4.9          | 1 309         | 4.5          | ...           | ...          |
| Commercial articles                        | 515                     | 1.8          | 553           | 1.9          | 624           | 2.2          |
| Costs for administration and production    | 4 891                   | 17.5         | 5 181         | 17.8         | 4 927         | 17.8         |

Note: Advertising expenditure is calculated at factor prices, i.e. the price the purchaser of an advertisement pays, excluding taxes.

Source: *The advertising expenditure survey in Denmark 2008*, Danish Audit Bureau of Circulation

**Table 86** Hours of radio broadcasting, DR

|                               | 2007          |                | 2008          |                |
|-------------------------------|---------------|----------------|---------------|----------------|
|                               | Analog        | Digital        | Analog        | Digital        |
|                               | hours         |                |               |                |
| <b>By kind of programme</b>   | <b>54 404</b> | <b>202 147</b> | <b>53 969</b> | <b>212 363</b> |
| News service                  | 4 955         | 11 429         | 4 603         | 10 933         |
| Current affairs               | 21 580        | 22 188         | 22 877        | 1 691          |
| Information and culture       | 5 530         | 1 428          | 4 162         | 85             |
| Drama/Fiction                 | 294           | 1 679          | 141           | 9 793          |
| Music                         | 12 324        | 155 616        | 13 494        | 182 518        |
| Entertainment                 | 6 865         | 8 293          | 6 794         | 7 138          |
| Sports                        | 812           | 54             | 980           | 11             |
| Education                     | 6             | -              | 5             | -              |
| Choir- and orchestra activity | 387           | 477            | 103           | 48             |
| Presentation and Service      | 1 641         | 799            | 811           | 146            |
| Not purposive                 | 10            | 184            | -             | -              |

Source: Danish Broadcasting Corporation

**Table 87** Hours of television broadcasting, DR and TV2

|  | DR (Danish Broadcasting Corporation) |               | TV2           |               |
|--|--------------------------------------|---------------|---------------|---------------|
|  | 2007                                 | 2008          | 2007          | 2008          |
|  | hours                                |               |               |               |
| <b>Television hours of broadcasting, total</b> | <b>11 027</b>                        | <b>11 632</b> | <b>12 686</b> | <b>12 855</b> |
| <b>National TV, total</b>                      | <b>11 027</b>                        | <b>11 632</b> | <b>7 170</b>  | <b>7 241</b>  |
| News service                                   | 757                                  | 878           | 595           | 613           |
| Current affairs                                | 1 460                                | 1 700         | 1 006         | 950           |
| Information and culture                        | 3 279                                | 3 148         | 473           | 494           |
| Education                                      | 377                                  | 335           | -             | -             |
| Music  | 379                                  | 435           | 11            | 19            |
| Entertainment                                  | 394                                  | 283           | 291           | 399           |
| Danish drama                                   | 487                                  | 479           | 310           | 314           |
| Foreign drama                                  | 3 277                                | 3 534         | 3 425         | 3 226         |
| Sports   | 276                                  | 469           | 534           | 870           |
| Programme introduction & service               | 341                                  | 371           | 525           | 356           |
| <b>Regional TV, total</b>                      | <b>•</b>                             | <b>•</b>      | <b>4 164</b>  | <b>4 012</b>  |
| <b>Advertising</b>                             | <b>•</b>                             | <b>•</b>      | <b>1 352</b>  | <b>1 602</b>  |
| <b>By kind of production<sup>1</sup></b>       |                                      |               |               |               |
| Own productions                                | 2 921                                | 3 315         | 1 562         | 1 578         |
| Other productions                              | 2 038                                | 1 958         | 3 291         | 3 235         |
| Repeat broad casts                             | 6 068                                | 6 359         | 2 317         | 2 428         |

<sup>1</sup> For TV2 excl. regional TV and advertising.

Source: DR (Danish Broadcasting Corporation) and TV2



**Table 88 Household access to TV-channels**

|   | 2008                 |  | 2009                 |  |
|---|----------------------|--|----------------------|--|
|   | Number of households | Number of households with television- sets | Number of households | Number of households with television- sets |
|   | thousands            | per cent                                   | thousands            | per cent                                   |
| <b>Total number of households per 1st Jan.</b>  | <b>2 547</b>         | <b>•</b>                                   | <b>2 563</b>         | <b>•</b>                                   |
| <b>Of which households with television sets</b> | <b>2 479</b>         | <b>100</b>                                 | <b>2 483</b>         | <b>100</b>                                 |
| DR 1  | 2 479                | 97   | 2 468                | 96   |
| DR 2  | 2 271                | 89   | 2 363                | 92   |
| DR Update                                       | ...                  | ...  | 1 221                | 48   |
| TV 2  | 2 462                | 97   | 2 453                | 96   |
| TV 2 Zulu                                       | 1 529                | 60   | 1 778                | 69   |
| TV 2 Charlie                                    | 1 503                | 59   | 1 719                | 67   |
| TV 2 Film                                       | 1 274                | 50   | 1 459                | 57   |
| TV 2 News                                       | 1 244                | 49   | 1 442                | 56   |
| Channel 4                                       | 1 521                | 60   | 1 567                | 61   |
| Channel 5                                       | 1 493                | 59   | 1 516                | 59   |
| Channel 5HD                                     | ...                  | ...  | 243                  | 10   |
| 6'eren  | 1 019                | 40   | 1 445                | 56   |
| Voice TV  | 831                  | 33   | 889                  | 35   |
| TV 3  | 1 624                | 64   | 1 680                | 66   |
| TV 3+   | 1 567                | 62   | 1 602                | 63   |
| TV3 Puls  | ...                  | ...  | 1 313                | 51   |
| TV 2 Sport                                      | 1 151                | 45   | 1 217                | 48   |
| TV 2 Sport HD                                   | 130                  | 5  | 211                  | 8  |
| Discovery Channel                               | 1 475                | 58   | 1 453                | 57   |
| Discovery World                                 | ...                  | ...  | 384                  | 15   |
| Discovery Science                               | ...                  | ...  | 246                  | 10   |
| Discovery travel & living                       | ...                  | ...  | 284                  | 11   |
| Animal Planet                                   | 1 348                | 53   | 1 376                | 54   |
| Cartoon Network                                 | 1 173                | 46   | 1 188                | 46   |
| Boomerang                                       | ...                  | ...  | 238                  | 9  |
| MTV   | 1 276                | 50   | 1 278                | 50   |
| National Geographic                             | 1 199                | 48   | 1 235                | 48   |
| Nickelodeon                                     | 517                  | 20   | 742                  | 29   |
| VH1   | 704                  | 28   | 808                  | 32   |
| TCM   | 989                  | 39   | 854                  | 33   |
| Disney Channel                                  | 1 187                | 47   | 1 225                | 48   |
| Playhouse Disney                                | 338                  | 13   | 413                  | 16   |
| Canal 9   | ...                  | ...  | 441                  | 17   |
| Eurosport                                       | 1 348                | 53   | 1 336                | 52   |
| DK4   | ...                  | ...  | 1 351                | 53   |
| NRK   | 950                  | 37   | 993                  | 39   |
| TV2 Norge                                       | 844                  | 33   | 822                  | 32   |
| Sweden 1 (SVT1)                                 | 1 218                | 48   | 1 357                | 53   |
| TV4 (Sweden)                                    | 1 155                | 45   | 1 144                | 45   |

Source: TNS Gallup A/S, Annual Survey 2009

**Table 89** Average television viewing per day: Danish and other TV-channels

|                           | 4-11<br>years | 12-20<br>years | 21-34<br>years | 35-54<br>years | 55<br>years + | Total       | Men         | Women       |
|---------------------------|---------------|----------------|----------------|----------------|---------------|-------------|-------------|-------------|
| (hours : minutes) per day |               |                |                |                |               |             |             |             |
| <b>All stations, 2009</b> | <b>1:53</b>   | <b>2:03</b>    | <b>3:18</b>    | <b>3:11</b>    | <b>3:56</b>   | <b>3:09</b> | <b>3:05</b> | <b>3:13</b> |
| DR1                       | 0:31          | 0:17           | 0:28           | 0:41           | 1:03          | 0:41        | 0:39        | 0:44        |
| DR2                       | 0:01          | 0:02           | 0:06           | 0:08           | 0:16          | 0:06        | 0:08        | 0:09        |
| DR Update                 | 0:00          | 0:00           | 0:01           | 0:01           | 0:01          | 0:01        | 0:01        | 0:01        |
| TV 2                      | 0:14          | 0:29           | 0:55           | 0:57           | 1:20          | 0:55        | 0:52        | 0:59        |
| TV 2 Zulu                 | 0:01          | 0:06           | 0:10           | 0:05           | 0:02          | 0:05        | 0:05        | 0:04        |
| TV2 Charlie               | 0:01          | 0:01           | 0:02           | 0:05           | 0:13          | 0:06        | 0:05        | 0:07        |
| TV 2 News                 | 0:00          | 0:01           | 0:03           | 0:05           | 0:09          | 0:05        | 0:06        | 0:04        |
| TV3                       | 0:03          | 0:10           | 0:17           | 0:11           | 0:06          | 0:09        | 0:07        | 0:12        |
| TV3+                      | 0:02          | 0:07           | 0:12           | 0:07           | 0:03          | 0:06        | 0:08        | 0:05        |
| Channel 5                 | 0:01          | 0:04           | 0:10           | 0:07           | 0:04          | 0:06        | 0:05        | 0:06        |
| TV Denmark (Channel 4)    | 0:01          | 0:02           | 0:07           | 0:04           | 0:02          | 0:03        | 0:02        | 0:05        |
| Other TV                  | 1:00          | 0:43           | 0:48           | 0:40           | 0:37          | 0:43        | 0:49        | 0:37        |
| <b>All stations, 2008</b> | <b>1:42</b>   | <b>1:53</b>    | <b>2:49</b>    | <b>2:47</b>    | <b>3:32</b>   | <b>2:47</b> | <b>2:40</b> | <b>2:53</b> |

Source: TNS Gallup A/S and the DR media research

**Table 90** The Danish Broadcasting Corporation and TV2, revenue and expenditure

|  | Danish Broadcasting Corporation |                          |                          | TV2                      |                          |                          |
|--|---------------------------------|--------------------------|--------------------------|--------------------------|--------------------------|--------------------------|
|  | 2006                            | 2007                     | 2008                     | 2006                     | 2007                     | 2008                     |
| thousands                                |                                 |                          |                          |                          |                          |                          |
| <b>Number of household</b>               | <b>2 344</b>                    | <b>2 375</b>             | <b>2 352</b>             | <b>2 344</b>             | <b>2 375</b>             | <b>2 352</b>             |
| <b>Radio and TV licenses<sup>1</sup></b> | <b>2 588<sup>2</sup></b>        | <b>2 478<sup>3</sup></b> | <b>2 468<sup>4</sup></b> | <b>2 588<sup>2</sup></b> | <b>2 478<sup>3</sup></b> | <b>2 468<sup>4</sup></b> |
| Of which: Medielicens                    | •                               | 2 311                    | 2 294                    | •                        | •                        | •                        |
| Licences for radio only                  | 80                              | 64                       | 58                       | •                        | •                        | •                        |
| Companies witch pay licenses             | 244                             | 103                      | 116 <sup>5</sup>         | •                        | •                        | •                        |
| DKK mio.                                 |                                 |                          |                          |                          |                          |                          |
| <b>Annual accounts</b>                   |                                 |                          |                          |                          |                          |                          |
| Revenue, total                           | 3 408                           | 3 618                    | 3 674                    | 1 980                    | 2 272                    | 2 206                    |
| Of which: Licenses                       | 3 139                           | 3 326                    | 3 343                    | -                        | -                        | -                        |
| Commercial, sponsors                     | 1                               | 2                        | 2                        | 1 586                    | 1 687                    | 1 597                    |
| Other                                    | 268                             | 290                      | 329                      | 394                      | 585                      | 609                      |
| Total expenditure                        | 3 225                           | 3 278                    | 3 330                    | -1 752                   | -2 120                   | -1 945                   |

<sup>1</sup> DR- licenses and Programme service collects the total licenses fees for DR, TV2, local radio- and TV and others. <sup>2</sup> 1.6.2006. <sup>3</sup> 31.12.2007. <sup>4</sup> 31.12.2008. <sup>5</sup> 2008 Industriallicences.

Source: DR and TV2

| Table 91                                |  | Cinemas |        |        |
|---|--|---------|--------|--------|
|   |  | 2007    | 2008   | 2009   |
| <b>Cinemas at end of year</b>           |  |         |        |        |
| Number of cinemas                       |  | 167     | 164    | 163    |
| Number of cinema screens (thousands)    |  | 59      | 58     | 58     |
| <b>Cinema activity</b>                  |  |         |        |        |
| Paid admissions (thousands)             |  | 12 121  | 13 246 | 14 082 |
| Admissions takings excl. VAT (DKK mio.) |  | 659     | 734    | 837    |
| Film hire (DKK mio.)                    |  | 289     | 325    | 376    |

[www.statbank.dk/bio1](http://www.statbank.dk/bio1) and [bio2](http://www.statbank.dk/bio2)

| Table 92                       |   | The most popular films shown in cinemas |                                |  |                                 |
|--------------------------------|---|---|--------------------------------|--|---------------------------------|
| 1976-2009                      |   |   | 2009                           |  |                                 |
| Week and year when first shown | Film titles                                       | Total number of paid admissions         | Week and year when first shown | Film titles                            | Total number of paid admissions |
|                                |   | thousands                               |                                |  | thousands                       |
| 1 04-1998                      | Titanic   | 1 363                                   | 1 09-2009                      | Män som hatar kvinnor                  | 959                             |
| 2 51-2001                      | The Lord of the Rings: The Fellowship of the Ring | 1 330                                   | 2 38-2009                      | Flickan som lekte med elden            | 785                             |
| 3 40-1976                      | Olsen banden ser rødt <sup>1</sup>                | 1 201                                   | 3 29-2009                      | Harry Potter and the half-blood prince | 596                             |
| 4 51-2003                      | The Lord of the Rings: The Return of the King     | 1 166                                   | 4 27-2009                      | Ice Age: Dawn of the Dinosaurs         | 516                             |
| 5 51-2002                      | The Lord of the Rings: The Two Towers             | 1 122                                   | 5 40-2009                      | Up                                     | 497                             |
| 6 11-1976                      | One Flew over the Cuckoo's Nest                   | 1 120                                   | 6 20-2009                      | Angels & Demons                        | 494                             |
| 7 39-1977                      | Olsen banden deruda <sup>1</sup>                  | 1 045                                   | 7 24-2009                      | Sorte kugler <sup>1</sup>              | 405                             |
| 8 51-1982                      | E.T. – The Extra Terrestrial                      | 1 019                                   | 8 48-2009                      | Luftslottet som sprængdes              | 405                             |
| 9 37-1978                      | Grease  | 1 006                                   | 9 51-2009                      | Avatar                                 | 322                             |
| 10 40-1978                     | Olsen banden går i krig <sup>1</sup>              | 1 006                                   | 10 06-2009                     | Bolt                                   | 259                             |

<sup>1</sup> Danish films.

[www.statbank.dk/bio1](http://www.statbank.dk/bio1) and [bio2](http://www.statbank.dk/bio2)

Table 93 Films by nationality. 2009

|                                      | Number of films shown | Paid admissions | Admission takings total | Film hire      | Film hire as percentage of admissions takings |
|--------------------------------------|-----------------------|-----------------|-------------------------|----------------|---|
|                                      |                       | thousands       | DKK thousands           |                | per cent                                      |
| <b>Films shown in cinemas, total</b> | <b>665</b>            | <b>14 082</b>   | <b>837 299</b>          | <b>376 236</b> | <b>45</b>                                     |
| Danish                               | 130                   | 2 435           | 125 236                 | 53 270         | 43  |
| Foreign, total                       | 535                   | 11 647          | 712 063                 | 322 966        | 45  |
| Of which European                    | 213                   | 3 303           | 206 945                 | 93 668         | 45  |
| American                             | 270                   | 7 706           | 462 076                 | 210 000        | 45  |
| Other                                | 52                    | 638             | 43 042                  | 19 298         | 45  |
| Films shown in cinemas in 2008       | 625                   | 13 246          | 733 653                 | 325 453        | 44  |

[www.statbank.dk/bio1](http://www.statbank.dk/bio1) and [bio2](http://www.statbank.dk/bio2)

Table 94 Films by year when first shown. 2009

|                                      | Number of films shown | Paid admissions | Admissions takings, total | Film hire      | Film hire as percentage of admissions takings |
|--------------------------------------|-----------------------|-----------------|---------------------------|----------------|---|
|                                      |                       | thousands       | DKK thousands             |                | per cent                                      |
| <b>Films shown in cinemas, total</b> | <b>665</b>            | <b>14 082</b>   | <b>837 299</b>            | <b>376 236</b> | <b>45</b>                                     |
| <b>First shown:</b>                  |                       |                 |                           |                |   |
| 2009                                 | 216                   | 13 024          | 779 316                   | 352 819        | 45  |
| 2008                                 | 142                   | 989             | 55 323                    | 22 397         | 40  |
| 2007                                 | 64                    | 17              | 441                       | 172            | 39  |
| 2006                                 | 43                    | 5               | 161                       | 67             | 42  |
| 2001-2005                            | 107                   | 12              | 373                       | 167            | 45  |
| 1996-2000                            | 34                    | 18              | 917                       | 315            | 34  |
| 1991-1995                            | 6                     | -               | 16                        | 8              | 51  |
| 1981-1990                            | 22                    | 10              | 492                       | 181            | 37  |
| 1971-1980                            | 7                     | -               | 13                        | 6              | 45  |
| 1961-1970                            | 6                     | 1               | 20                        | 10             | 49  |
| 1960 and before                      | 18                    | 6               | 227                       | 94             | 42  |

[www.statbank.dk/bio1](http://www.statbank.dk/bio1) and [bio2](http://www.statbank.dk/bio2)

Table 95 Music sales

|                            | Sales              |                    | Turnover       |                |
|----------------------------|--------------------|--------------------|----------------|----------------|
|                            | 2008               | 2009               | 2008           | 2009           |
|                            | number             |                    | DKK thousand   |                |
| <b>Total<sup>1</sup></b>   | <b>125 645 379</b> | <b>137 364 218</b> | <b>553 158</b> | <b>526 005</b> |
| CD-albums                  | 6 256 423          | 5 608 505          | 361 497        | 313 517        |
| LP/ MC                     | 18 639             | 23 550             | 1 863          | 2 114          |
| DVD-audio                  | 23 506             | 18 277             | 1 469          | 840            |
| CD-sets <sup>2</sup>       | 949 284            | 1 019 318          | 73 526         | 84 028         |
| CD/sacd                    | 927                | 417                | 83             | 32             |
| CD-maxi/ Cd-single         | 18 495             | 12 329             | 507            | 400            |
| Digital albums             | 434 085            | 754 754            | 21 476         | 31 038         |
| Digital Track              | 5 753 822          | 18 440 641         | 30 174         | 39 198         |
| Digital other <sup>3</sup> | 112 188 604        | 111 069 533        | 50 268         | 49 229         |
| Ringtunes single           | ...                | 241 742            | ...            | 1 947          |
| Mobil other                | ...                | 174 154            | ...            | 3 627          |
| Other                      | 1 594              | 998                | 12 295         | 35             |

Note: The members of IFPI Denmark are Danish and foreign record companies. The turnover of these record companies account for more than 95 per cent of the total sale in Denmark.

Source: IFPI Denmark

<sup>1</sup> Incl. Greenland and The Faeroe Islands. <sup>2</sup> Double-albums and similar products containing more than one phonogram in one product. <sup>3</sup> The majority is accounted by subscription based sales.

Table 96 Danish National Archives and provincial archives. 2009

|                          | Collections          |                             | Material received under delivery schemes | Reading rooms |             | Long-distance loans Circulation | Staff paid out of own budget |
|--------------------------|----------------------|-----------------------------|--|---------------|-------------|---------------------------------|------------------------------|
|                          | Total shelf capacity | Size at the end of the year |  | Visitors      | Circulation |                                 |                              |
|                          | thousand metres      |                             | metres                                   | thousands     |             | number                          |                              |
| <b>Archives total</b>    | <b>762</b>           | <b>406</b>                  | <b>7 647</b>                             | <b>47</b>     | <b>158</b>  | <b>9 507</b>                    | <b>217</b>                   |
| Danish National Archives | 538                  | 193                         | 5 182                                    | 14            | 51          | 4 189                           | 104                          |
| Provincial archives in:  |                      |                             |  |               |             |                                 |                              |
| Copenhagen               | 50                   | 49                          | -  | 13            | 24          | 527                             | 14                           |
| Odense                   | 24                   | 19                          | 327                                      | 6             | 8           | 1 290                           | 16                           |
| Viborg                   | 63                   | 70                          | 796                                      | 9             | 63          | 1 823                           | 44                           |
| Aabenraa                 | 17                   | 19                          | 64                                       | 3             | 5           | 661                             | 12                           |
| Industrial Archives      | 70                   | 56                          | 1 278                                    | 2             | 7           | 1 017                           | 16                           |
| Danish Data Archives     | -                    | -                           | -  | -             | -           | -                               | 11                           |

Source: Danish National Archives

Table 97 The Danish Arts Foundation. 2008

|                            | 3-year scholarships | Lump sum grants | Competitions and prizes | Purchases    | Other grants  | Total         |
|----------------------------|---------------------|-----------------|-------------------------|--------------|---------------|---------------|
|                            | DKK thousands       |                 |                         |              |               |               |
| <b>Total</b>               | <b>28 215</b>       | <b>34 152</b>   | <b>1 370</b>            | <b>3 862</b> | <b>14 288</b> | <b>81 887</b> |
| Visual arts                | 12 115              | 3 055           | 650                     | 3 522        | 10 420        | 29 762        |
| Literature                 | 8 400               | 8 296           | 600                     | -            | -             | 17 296        |
| Contemporary music         | 840                 | 3 639           | -                       | -            | 900           | 5 379         |
| Classical music            | 840                 | 1 906           | -                       | -            | 2 725         | 5 471         |
| Common music               | 840                 | 870             | -                       | -            | 319           | 2 029         |
| Applied arts and designing | 2 520               | 5 594           | 120                     | 340          | -             | 8 574         |
| Architecture               | 1 680               | 5 132           | -                       | -            | -70           | 6 742         |
| Film and theatre           | 980                 | 5 660           | -                       | -            | -6            | 6 634         |

Source: Annual report of the Danish Arts Foundation

Table 98 Libraries. 2008

|  | Full-time staff at end of year |                    | Expenditure (Accounts figures) |                   | Books, periodicals and other media |                             |
|--|--------------------------------|--------------------|--------------------------------|-------------------|------------------------------------|-----------------------------|
|  | Total                          | Of whom librarians | Total                          | Of which salaries | Stock at the end of the year       | Circulation during the year |
|  | number                         |                    | DKK mio.                       |                   | thousands units                    |                             |
| <b>Public libraries, total</b>                                       | <b>4 720</b>                   | <b>2 229</b>       | <b>2 799</b>                   | <b>1 723</b>      | <b>24 756</b>                      | <b>74 577</b>               |
| Central libraries  | 1 903                          | 898                | 1 148                          | 691               | 9 897                              | 33 856                      |
| Other full-time libraries  | 2 817                          | 1 331              | 1 651                          | 1 032             | 14 859                             | 40 721                      |
| <b>School libraries, total</b>                                       | <b>3 165</b>                   | <b>2 556</b>       | ...                            | ...               | <b>39 352</b>                      | <b>24 970</b>               |
| <b>Research libraries, total</b>                                     | <b>1 543</b>                   | <b>613</b>         | <b>1 045</b>                   | <b>624</b>        | <b>40 969<sup>1</sup></b>          | <b>10 330</b>               |
| The Royal Library, Copenhagen  | 394                            | 83                 | 206                            | 154               | 22 998                             | 1 411                       |
| National libraries   | 232                            | 64                 | 155                            | 83                | 4 644                              | 1 106                       |
| University libraries and libraries at institutes of higher education | 442                            | 158                | 335                            | 186               | 8 424                              | 3 231                       |
| Other libraries at institutes of higher education                    | 263                            | 185                | 150                            | 92                | 1 901                              | 2 459                       |
| Libraries at institutes  | ...                            | ...                | 44                             | 26                | 3 002                              | 311                         |
| Special libraries  | 212                            | 123                | 155                            | 83                | ...                                | 1 812                       |

<sup>1</sup> Excl. special libraries.

Source: Danish National Library Authority and information from the Ministry of Education (school libraries).

Table 99 Public libraries: lending of books. 2008

|                         | Places of service open to the public | Stock            |                             |                              | Lendings         |                             |                              |
|-------------------------|--------------------------------------|------------------|-----------------------------|------------------------------|------------------|-----------------------------|------------------------------|
|                         |                                      | Books per capita | Books per adult (14 years+) | Books per child (0-13 years) | Books per capita | Books per adult (14 years+) | Books per child (0-13 years) |
| <b>Public libraries</b> | <b>510</b>                           | <b>4.49</b>      | <b>3.72</b>                 | <b>8.24</b>                  | <b>13.53</b>     | <b>10.72</b>                | <b>27.27</b>                 |
| Region Hovedstaden      | 123                                  | 4.81             | 4.02                        | 8.81                         | 15.84            | 12.73                       | 31.60                        |
| Region Sjælland         | 87                                   | 4.70             | 3.85                        | 8.82                         | 11.55            | 8.95                        | 24.12                        |
| Region Syddanmark       | 120                                  | 4.68             | 3.91                        | 8.40                         | 12.39            | 9.66                        | 25.66                        |
| Region Midtjylland      | 116                                  | 4.04             | 3.34                        | 7.29                         | 13.42            | 10.68                       | 26.21                        |
| Region Nordjylland      | 64                                   | 3.83             | 3.08                        | 7.64                         | 12.32            | 9.75                        | 25.40                        |

Source: Danish Agency for Libraries and Media

Table 100 Public libraries: lending of other media. 2008

|                         | Places of service open to the public | Stock            |                             |                              | Lendings         |                             |                              |
|-------------------------|--------------------------------------|------------------|-----------------------------|------------------------------|------------------|-----------------------------|------------------------------|
|                         |                                      | Books per capita | Books per adult (14 years+) | Books per child (0-13 years) | Books per capita | Books per adult (14 years+) | Books per child (0-13 years) |
| <b>Public libraries</b> | <b>510</b>                           | <b>1.64</b>      | <b>1.62</b>                 | <b>1.76</b>                  | <b>3.51</b>      | <b>2.94</b>                 | <b>6.24</b>                  |
| Region Hovedstaden      | 123                                  | 0.75             | 0.72                        | 0.86                         | 4.25             | 3.70                        | 6.99                         |
| Region Sjælland         | 87                                   | 1.64             | 1.62                        | 1.74                         | 2.80             | 2.26                        | 5.36                         |
| Region Syddanmark       | 120                                  | 1.63             | 1.61                        | 1.72                         | 3.08             | 2.53                        | 5.72                         |
| Region Midtjylland      | 116                                  | 1.60             | 1.57                        | 1.70                         | 3.62             | 3.05                        | 6.28                         |
| Region Nordjylland      | 64                                   | 1.50             | 1.45                        | 1.76                         | 3.01             | 2.34                        | 6.44                         |

Note: The term "other media" includes the following categories: recordings of music, film, talking books and multimedia materials. Consequently, these categories also include videotapes, CD-Rom, music CDs and DVDs.

Source: Danish Agency for Libraries and Media

Table 101 Admissions to museums

|   | 2007          | 2008         |  | 2007          | 2008          |
|---|---------------|--------------|--|---------------|---------------|
|   |               |              |  | — thousands — |               |
| <b>Total number of museums</b>                        | <b>266</b>    | <b>266</b>   | The Viking Harbour of Bork                       | 50            | 46            |
| Museums under the National Museum                     | 7             | 7            | Spøttrup Castle museum                           | 36            | 45            |
| Cultural historical museums                           | 187           | 187          | Danish Museum of Electricity                     | 45            | 41            |
| Art museums   | 54            | 54           | Historical Centre Dybbøl Banke                   | 43            | 41            |
| Natural science museums                               | 6             | 6            | Women's Museum in Denmark                        | 45            | 41            |
| Other museums   | 12            | 12           | The Museum of Denmark Exhibition Complex         | 34            | 37            |
|   |               |              | Maritime Museum, Marstal                         | 32            | 37            |
| <b>Admissions</b>                                     | — thousands — |              | The Position of Tirpitz                          | 33            | 36            |
|   |               |              | The Museum of Copenhagen                         | 43            | 35            |
| <b>a. Museums under the National Museum total</b>     | <b>793</b>    | <b>817</b>   | The Industrial Museum, Horsens                   | 38            | 35            |
| Of which:   |               |              | Danish Maritime Museum, Kronborg                 | 48            | 35            |
| The National Museum, Prince's Palais                  | 382           | 373          | City Museum, Århus                               | 27            | 33            |
| Industrial Works of Brede/Open Air Museum, Lyngby     | 265           | 288          | Gavnø Castle                                     | 30            | 33            |
| The Museum of Danish Resistance                       | 61            | 67           | The Royal Library                                | 17            | 33            |
| Frøslevlejrens Museum                                 | 34            | 37           | The Museum of Historical culture, Tønder         | 35            | 32            |
|   |               |              | Lindholm Burial Mound                            | 27            | 32            |
| <b>b. Cultural historical museums, total</b>          | <b>6 461</b>  | <b>6 231</b> | Karen Blixen-Museum                              | 34            | 32            |
| Of which:   |               |              |  |               |               |
| Den Gamle By  | 388           | 333          | <b>c. Art museums, total</b>                     | <b>2 861</b>  | <b>2 885</b>  |
| The Rosenborg Collection                              | 188           | 211          | Of which:  |               |               |
| Egeskov Castle  | 218           | 207          | Louisiana Museum                                 | 468           | 559           |
| Kronborg Castle                                       | 191           | 190          | The Danish National Gallery                      | 425           | 313           |
| The Museum of nation. history at Frederiksborg Castle | 183           | 165          | New Carlsberg Glyptotek                          | 311           | 275           |
| The Frigate Jutland                                   | 132           | 151          | ARoS   | 232           | 215           |
| Fisheries and Maritime Museum                         | 160           | 151          | Arken  | 116           | 202           |
| PTT museum of Denmark                                 | 142           | 151          | Skagen Museum                                    | 110           | 163           |
| Carlsberg visit centre                                | 137           | 135          | The Art Museum Trapholt                          | 75            | 66            |
| The Viking Ship Museum                                | 138           | 135          | Danish Museum of Decorative Art                  | 72            | 63            |
| Moesgård Museum                                       | 120           | 127          | Thorvaldsen Museum                               | 62            | 60            |
| Workers Museum Copenhagen                             | 111           | 101          | Art Museum of Modern Art Aalborg                 | 57            | 53            |
| Danish Agricultural Museum Gl. Estrup                 | 106           | 95           | The Art Museum Ordrupgaard                       | 67            | 46            |
| Jutland manor house Museum, Gl. Estrup                | 106           | 95           | Bornholm Art Museum                              | 58            | 46            |
| The Funen Village                                     | 105           | 95           | Randers Art Museum                               | 49            | 46            |
| Danish film Institute/ Museum and Cinematic           | 112           | 93           | Storstrøms Art Museum                            | 2             | 45            |
| Museum at Koldinghus                                  | 100           | 93           | The Glass houses, Ebeltoft                       | 46            | 43            |
| The Danish Railway Museum                             | 98            | 92           | Johannes Larsen Museum                           | 46            | 40            |
| H.C. Andersens House                                  | 92            | 88           | The Museum of Photo Art                          | 38            | 39            |
| Hjerl Hedes Open Air Museum                           | 102           | 77           | Silkeborg Art Museum                             | 38            | 35            |
| Museum of Langeland                                   | 69            | 71           | Michael and Anna Anchers House and Saxilds Gaard | 33            | 30            |
| City museum Moentergaarden                            | 56            | 67           |  |               |               |
| The museum the Viking of Ribe                         | 67            | 64           | <b>d. Natural science museums, total</b>         | <b>282</b>    | <b>284</b>    |
| Hanstholm Museum                                      | 65            | 62           | Of which:  |               |               |
| Valdemar Castle                                       | 73            | 62           | Zoological Museum of the University              | 111           | 103           |
| Andelslandsbyen Nyvang                                | 61            | 59           | Naturama   | 60            | 64            |
| Lemvig Museum   | 65            | 59           | Natural history Museum                           | 48            | 50            |
| Tøjhusmuseet (Danish Defence Museum)                  | 55            | 57           |  |               |               |
| Museum at Sønderborg Castle                           | 58            | 57           | <b>e. Other Museum, total</b>                    | <b>275</b>    | <b>279</b>    |
| Museum Erotica  | 75            | 54           | Of which:  |               |               |
| Fur Museum <sup>1</sup>                               | 53            | 52           | Danfoss Univers A/S                              | 191           | 195           |
| House of Fisheries                                    | 45            | 48           | Voergård Castle                                  | 36            | 36            |
| Cultural historical Museum Randers                    | 46            | 48           |  |               |               |
| Museum of Amalienborg                                 | 74            | 48           | <b>a-e Total admission<sup>2</sup></b>           | <b>10 672</b> | <b>10 497</b> |
| National Museum of Science and Technology             | 46            | 46           |  |               |               |

Note: Figures for total visitors only include museums for which the number of visitors has been stated for both years. Double museums include both a cultural-historical department and an art department, and it is not possible to divide the number of visitors between the two departments. The table includes museums with more than 30,000 visitors in 2007 only.

[www.statbank.dk/mus](http://www.statbank.dk/mus)

<sup>1</sup> Include of both a cultural historical exhibition and an art exhibition. <sup>2</sup> The further for total number of visitors include visitors to double museums.

Table 102 Admissions to zoological gardens

|   | 2008          | 2009         |
|---|---------------|--------------|
| <b>Total number of zoological gardens</b> | <b>16</b>     | <b>16</b>    |
|   | — thousands — |              |
| <b>Admissions total</b>                   | <b>3 873</b>  | <b>3 775</b> |
| Zoologisk Have                            | 1 394         | 1 298        |
| Odense Zoo                                | 430           | 401          |
| Aalborg Zoologiske Have                   | 372           | 398          |
| Den selvejende institution Givskud Zoo    | 328           | 320          |
| Knuthenborg (Hippotigris A/S)             | 241           | 228          |
| Nordsømuseum                              | 217           | 209          |
| Kattegatcentrets Driftsfond               | 187           | 176          |
| Jyllands Park Zoo Aps                     | 170           | 171          |
| Danmarks Akvarium                         | 138           | 144          |
| Ree Park - Ebeltoft Safari                | 102           | 136          |
| Skandinavisk Dyrepark A/S                 | 81            | 73           |
| Fjord- og bæltcentret i Kerteminde        | 62            | 60           |
| Øresundsakvariet                          | 51            | 55           |
| Odsherred Zoo - Dyrepark A/S              | 47            | 50           |
| Bornholms Sommerfuglepark & tropeland     | 31            | 27           |
| Skærup Zoo                                | 22            | 29           |

[www.statbank.dk/mus](http://www.statbank.dk/mus)

Table 103 Theatres. 2008/2009

|  | Perma-<br>nent<br>stages productions | Number<br>of<br>productions | Number<br>of seats | Number of performances |                    |                  |                    | Audience     |                    |
|--|--------------------------------------|-----------------------------|--------------------|------------------------|--------------------|------------------|--------------------|--------------|--------------------|
|  |                                      |                             |                    | Total                  | Of which<br>Danish | New performances |                    | Total        | Paid<br>admissions |
|  |                                      |                             |                    |                        |                    | Total            | Of which<br>Danish |              |                    |
| number   |                                      |                             |                    | thousands              |                    |                  |                    |              |                    |
| <b>State-subsidized theatres, total</b>  | <b>92</b>                            | <b>11 970</b>               | <b>27 812</b>      | <b>540</b>             | <b>397</b>         | <b>338</b>       | <b>234</b>         | <b>2 275</b> | ...                |
| <b>The Royal Theatre, total</b>  | <b>6</b>                             | <b>710</b>                  | <b>4 054</b>       | <b>45</b>              | <b>13</b>          | <b>28</b>        | <b>12</b>          | <b>436</b>   | <b>392</b>         |
| Plays  | ...                                  | 376                         | ...                | 12                     | 7                  | 11               | 7                  | 109          | 89                 |
| Operas   | ...                                  | 129                         | ...                | 12                     | 2                  | 8                | 2                  | 138          | 128                |
| Ballets and dance  | ...                                  | 127                         | ...                | 18                     | 2                  | 8                | 2                  | 136          | 125                |
| Operetta and musical   | ...                                  | 22                          | ...                | 1                      | -                  | -                | -                  | 31           | 31                 |
| Revy and cabaret   | ...                                  | 56                          | ...                | 2                      | 2                  | 1                | 1                  | 22           | 19                 |
| <b>The regional theatres, total</b>  | <b>20</b>                            | <b>2 186</b>                | <b>5 790</b>       | <b>72</b>              | <b>37</b>          | <b>72</b>        | <b>37</b>          | <b>660</b>   | <b>542</b>         |
| Theatre cooperation of greater<br>Copenhagen theatre                           | 6                                    | 1 072                       | 2 934              | 30                     | 16                 | 30               | 16                 | 418          | 342                |
| Regional theatres outside Copenhagen   | 14                                   | 1 114                       | 2 856              | 42                     | 21                 | 42               | 21                 | 242          | 200                |
| <b>Other state-subsidized theatres, total</b>                                  | <b>66</b>                            | <b>9 074</b>                | <b>17 968</b>      | <b>423</b>             | <b>347</b>         | <b>238</b>       | <b>185</b>         | <b>1 179</b> | ...                |
| folketeatret.dk/turne, The Danish<br>National Opera, Peter Schaufuss Balletten | 1                                    | 475                         | 1 477              | 18                     | 8                  | 16               | 6                  | 178          | ...                |
| Local city-theatres  | 23                                   | 2 468                       | 2 957              | 84                     | 59                 | 58               | 43                 | 307          | ...                |
| Local theatres   | 36                                   | 2 984                       | 13 006             | 164                    | 138                | 85               | 66                 | 431          | ...                |
| Theatres subsidized by the Danish Arts<br>Council                              | 6                                    | 3 147                       | 528                | 157                    | 142                | 79               | 70                 | 263          | ...                |
| <b>Non subsidized theatres, total</b>  | ...                                  | <b>3 886</b>                | ...                | <b>184</b>             | ...                | ...              | ...                | <b>662</b>   | ...                |
| Ballet and dance   | ...                                  | 192                         | ...                | 9                      | ...                | ...              | ...                | 22           | ...                |
| Performance  | ...                                  | 54                          | ...                | 6                      | ...                | ...              | ...                | 3            | ...                |
| Opera  | ...                                  | 55                          | ...                | 11                     | ...                | ...              | ...                | 9            | ...                |
| Operetta and musical   | ...                                  | 239                         | ...                | 4                      | ...                | ...              | ...                | 122          | ...                |
| Plays  | ...                                  | 837                         | ...                | 36                     | ...                | ...              | ...                | 167          | ...                |
| Childrens theatre  | ...                                  | 1 778                       | ...                | 92                     | ...                | ...              | ...                | 160          | ...                |
| Revue and cabaret  | ...                                  | 227                         | ...                | 12                     | ...                | ...              | ...                | 79           | ...                |
| Other  | ...                                  | 504                         | ...                | 14                     | ...                | ...              | ...                | 100          | ...                |

Note: Theatres' activities are excluding guest performances. The statistics concerns the season, running from 1st July to 30th June.

[www.statbank.dk/teat1, teat2 and teat3](http://www.statbank.dk/teat1, teat2 and teat3)



Table 104 Sports federations and youth and outdoor activities organizations

|  | Number of members |              |
|--|-------------------|--------------|
|  | 2008              | 2009         |
|  | — thousands —     |              |
| <b>Youth organizations, total<sup>1</sup></b>          | <b>85</b>         | <b>85</b>    |
| The Danish Scout Association                           | 25                | 26           |
| Voluntary Christian Boys' and Girls' Association, FDF  | 24                | 24           |
| The Green Girl Guides in Denmark                       | 5                 | 5            |
| YMCA Scouts in Denmark                                 | 25                | 24           |
| Danish Baptists' Scout Organisation                    | 1                 | 1            |
| DUI - LEG og VIRKE Children's Organisation             | 5                 | 5            |
| <b>Sports Federations<sup>2</sup></b>                  |                   |              |
| <b>The Danish Sports Federations</b>                   | <b>1 626</b>      | <b>1 647</b> |
| Badminton  | 100               | 101          |
| Football (DBU)   | 307               | 314          |
| Golf   | 146               | 150          |
| Gymnastics   | 121               | 112          |
| Handball   | 119               | 122          |
| Riding   | 79                | 79           |
| Sailing  | 59                | 59           |
| Swimming   | 123               | 124          |
| Tennis   | 61                | 60           |
| Other federations                                      | 511               | 526          |
| <b>The Danish Gymnastics and Athletics Federations</b> | <b>1 639</b>      |              |
| Badminton  | 156               | ...          |
| The Danish Rifle Federation                            | 147               | ...          |
| Football   | 275               | ...          |
| Gymnastics   | 313               | ...          |
| Handball   | 122               | ...          |
| Swimming   | 154               | ...          |
| Tennis   | 55                | ...          |
| Other federations                                      | 323               | ...          |
| Sports for children                                    | 7                 | ...          |
| Exercise and leisure                                   | 64                | ...          |
| Continuation schools, etc.                             | 23                | ...          |
| <b>The Danish Firms' Sports Federations</b>            | <b>316</b>        | <b>310</b>   |
| Badminton  | 21                | 19           |
| Football   | 40                | 34           |
| Handball   | 3                 | 2            |
| Bowling  | 27                | 22           |
| Fitness centre   | 49                | 39           |
| Keep-fit exercises                                     | 12                | 8            |
| Jogging  | 25                | 27           |
| Other sports   | 139               | 159          |
| <b>Other outdoor activities organizations</b>          |                   |              |
| The Danish Camping Association                         | 159               | 153          |
| The Danish Cyclist Federation                          | 18                | 17           |
| The Danish Society for the Conservation of Nature      | 140               | 136          |
| The Danish Hunting Federation                          | 94                | 94           |
| The Danish Garden Society                              | 45                | 42           |

<sup>1</sup> Includes members of the uniformed groups under the association for children's and youth organizations. <sup>2</sup> Includes active members, the other organizations include associate members too. If a person takes part in more than one sport, the person will usually be counted more than once.

Source: The organizations

**Table 105 Attendance at selected sporting events**

|                                   | Season 2007/2008 |         |                               | Season 2008/2009 |         |                               | Per cent changes in the number of avr. attendance |
|-----------------------------------|------------------|---------|-------------------------------|------------------|---------|-------------------------------|---|
|                                   | Attendance       | Matches | Average attendances per match | Attendance       | Matches | Average attendances per match |   |
| <b>Football</b>                   |                  |         |                               |                  |         |                               |   |
| Sasleague – men                   | 1 681 695        | 198     | 8 493                         | 1 744 822        | 198     | 8 812                         | 3.8   |
| 1st Division – men                | 323 770          | 240     | 1 349                         | 257 309          | 211     | 1 219                         | -9.6  |
| 2nd Division – men                | 175 774          | 240     | 732                           | 153 516          | 241     | 637                           | -13.0   |
| <b>Handball</b>                   |                  |         |                               |                  |         |                               |   |
| Handball league – men             | 273 357          | 193     | 1 416                         | 309 319          | 226     | 1 369                         | -3.3  |
| 1st Division – men                | 79 669           | 184     | 433                           | 79 521           | 194     | 410                           | -5.3  |
| Handball league – women           | 214 178          | 141     | 1 519                         | 187 796          | 162     | 1 159                         | -23.7   |
| 1st Division – women              | 35 736           | 184     | 194                           | 44 515           | 194     | 229                           | 18.0  |
| <b>Ice hockey</b>                 |                  |         |                               |                  |         |                               |   |
| Al-Bank league – men              | 310 667          | 223     | 1 393                         | 236 312          | 180     | 1 313                         | -5.7  |
| Play-offs and final games - men   | 97 305           | 41      | 2 373                         | 78 376           | 39      | 2 010                         | -15.3   |
| Season, total <sup>1</sup> – men  | 407 972          | 264     | 1 546                         | 314 688          | 219     | 1 437                         | -7.1  |
| <b>Badminton<sup>2</sup></b>      |                  |         |                               |                  |         |                               |   |
| Denmark Open (Århus)              | 5 079            | ...     | ...                           | 5 600            | ...     | ...                           | ...   |
| Copenhagen Masters (Cph.)         | 3 282            | ...     | ...                           | 3 518            | ...     | ...                           | ...   |
| DM (Aalborg)                      | 2 588            | ...     | ...                           | 4 120            | ...     | ...                           | ...   |
| Hold-finalen (Guldmatchen - Cph.) | 2 123            | ...     | ...                           | 2 148            | ...     | ...                           | ...   |
| <b>Basketball</b>                 |                  |         |                               |                  |         |                               |   |
| Basketball league – men           | 57 191           | 133     | 430                           | 60 844           | 130     | 468                           | 8.8   |

<sup>1</sup> Cup ties are excluded. <sup>2</sup> Only larger tournaments, includes badminton for both men and women.

Source: Danish Football Association, Danish Handball Association, Danish Ice Hockey Union, Danish Badminton Federation, Danish Basketball Federation.

**Table 106 Public expenditure on individual cultural areas. 2008**

|                          | Constructive and creative activities |            |              | Preservation and dissemination of the cultural heritage |              |               | Further and higher education <sup>2</sup> | Other cultural expenditure <sup>2</sup> | Culture total |               |
|--------------------------|--------------------------------------|------------|--------------|---|--------------|---------------|---|---|---------------|---------------|
|                          | Grants to artists <sup>1</sup>       | Music      | Theatre      | Films   | Libraries    | Archives etc. |   |   |               | Museums       |
| DKK mio.                 |                                      |            |              |   |              |               |   |   |               |               |
| <b>Total expenditure</b> | <b>697</b>                           | <b>863</b> | <b>1 293</b> | <b>402</b>  | <b>3 296</b> | <b>175</b>    | <b>1 358</b>                              | <b>878</b>                              | <b>1 682</b>  | <b>10 644</b> |
| Central government       | 697                                  | 263        | 1 083        | 386   | 758          | 175           | 883                                       | 878                                     | 890           | 6 013         |
| Municipalities           | ...                                  | 600        | 210          | 16  | 2 538        | ...           | 475                                       | ...                                     | 792           | 4 631         |
| DKK per citizen          |                                      |            |              |   |              |               |   |   |               |               |
| <b>Total expenditure</b> | <b>127</b>                           | <b>158</b> | <b>236</b>   | <b>73</b>   | <b>602</b>   | <b>32</b>     | <b>248</b>                                | <b>160</b>                              | <b>307</b>    | <b>1 944</b>  |
| Central government       | 127                                  | 48         | 198          | 70  | 138          | 32            | 161                                       | 160                                     | 163           | 1 098         |
| Municipalities           | ...                                  | 110        | 38           | 3   | 463          | ...           | 87  | ...                                     | 145           | 846           |

Note: Public expenditure includes gross operating expenditure less any income and reimbursements from central government.

Source: National accounts and municipal accounts

<sup>1</sup> Including authors etc. <sup>2</sup> Including National Accounts account number 21.11 excl. 21.11.71-79, 21.81 (Radio and TV) and the Ministry of Cultural Affairs' share of pools and lottery money for general cultural purposes. Municipal expenditure includes account number 3.64 (other cultural tasks) in municipal accounts.