

## Social conditions, health and justice

1

### Social conditions

#### Objectives of the Danish social security system

The social security system in Denmark has several objectives:

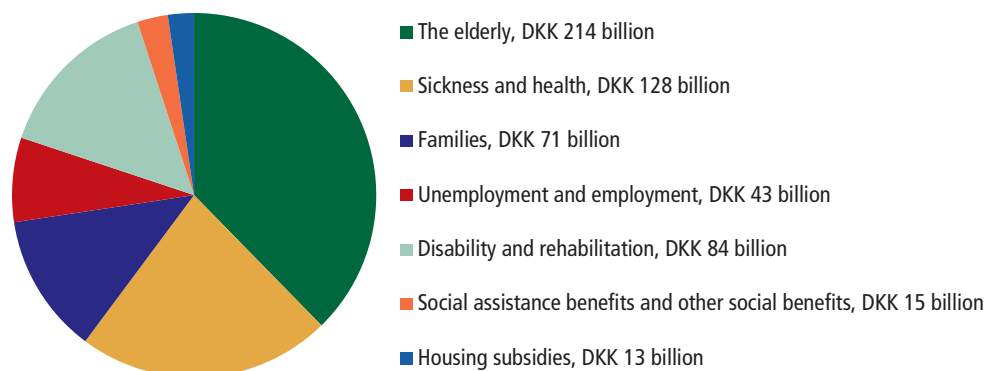
- 1) To secure the population financially in the event of, for example, sickness, unemployment and old age through income-substitute benefits.
- 2) to offer support to bring down expenditure on, for example, housing and child care through supplementary subsidy schemes.
- 3) to provide appropriate services in areas such as child care, care of the elderly, care of the disabled, health care and home help through institutions and services.

#### Social expenditure amounts to DKK 569 billion in 2010

Total expenditure for social purposes amounted to DKK 569 billion in 2010 or DKK 103,000 per capita. Expenditure on social services measured in relation to GDP accounted for 33.5 per cent in 2010.

Expenditure on old age is the largest social item and comprises, for example, pensions, nursing homes and home help for the elderly. Social expenditure is defined broadly in this context and also includes health services and labour market schemes expenditure.

Figure 1 Expenditure on social services analysed by purpose. 2010



[www.statbank.dk/udg1](http://www.statbank.dk/udg1)

#### Financing of social expenditure

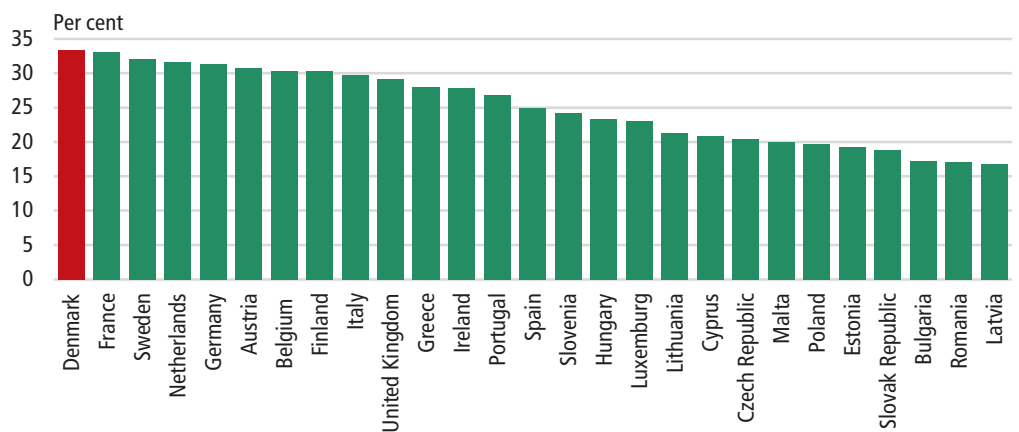
The public sector's proportion of total grants and contributions to social benefits reached 68 per cent in 2010, of which the central government accounted for 23 per cent and the local government authorities for 45 per cent. Employer contributions reached 12 per cent, while persons insured accounted for 21 per cent. The proportion paid by the state has for some years been decreasing but has grown from 2008 to 2010. There has been an increase in the proportions paid by the local and regional authorities, the employers and the persons insured.

### Denmark in front in the EU

According to Eurostat, Denmark with its 33.5 per cent in 2009 ranks first among the 27 EU countries with respect to social expenditure in relation to gross domestic product. France and Sweden ranked second and third. Netherlands and Germany ranked fourth and fifth. As before Romania and Latvia were ranked at the bottom with a proportion of 17 per cent, respectively, but in these countries there is a considerable growth in the social expenditure.

The comparison of social expenditure is not corrected for differences in income taxes on social benefits and legislation concerning payments of VAT and indirect taxes, etc., in each country. In Denmark receivers of some social grants are liable to pay income taxes. International comparisons are always difficult. This also applies to comparisons of social expenditure.

Figure 2 Social expenditure as a proportion of GDP in EU. 2009



Note: Calculations are based on Eurostat's joint classification (ESSPROS) in which expenditure is calculated gross.

Source: Eurostat/ESSPROS

### More day measures for children and young people

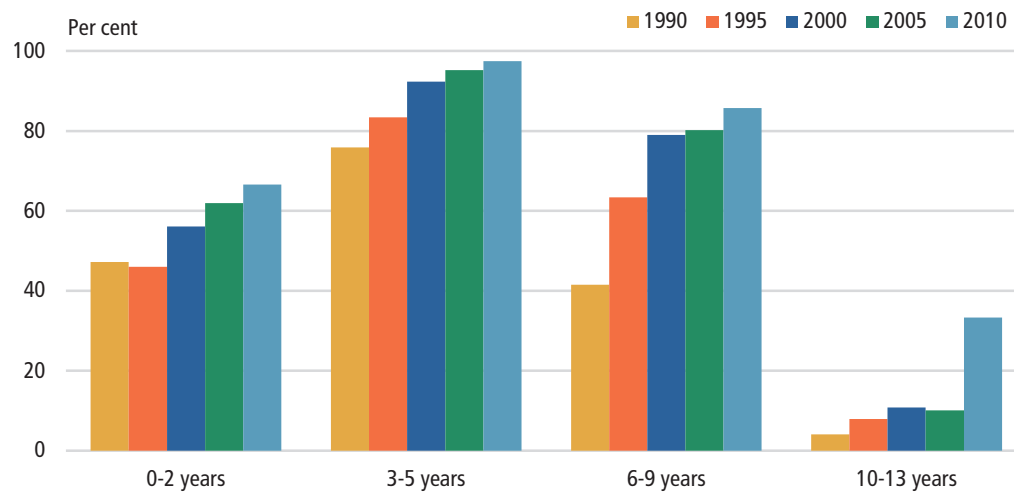
Still more children are looked after by day carers, day-care institutions and school-based leisure-time activities. As a total 576,000 children under the age of 13 in October 2010. 234,000 children were enrolled in school-care schemes and 17,000 in recreation centres. In 1985 262,000 children were looked after. At that time there were no school-care schemes, because they were introduced in 1987. 46,000 children were enrolled in recreation centres in 1985. Concerning children in the school age the number of children, who were looked after, has grown from 46,000 in 1985 to 251,000 in 2010 and for children under school age from 215,000 to 324,000.

The proportion of children in public organized child-care institutions has grown from 30 per cent in 1985 to 62 per cent in 2010. Today the greatest frequency is realized for children in the so called kindergarten-age, that is children aged 3-5. In this age group, 97 per cent of all children were looked after by day carers and day-care institutions.

The proportion of children who were looked after was 67 per cent for 0-2-year-old children. Among them the frequency is very low for children corresponding to 15 per cent in the first duration of life, while the parents are on leave.

For children in school age the frequency is 84 per cent. Since 1985 there has been a sizeable growth in schemes within outside school-hours care. For smaller children the age-integrated institutions (children aged 0-5) have become popular looking after 170,000 children. In nurseries 12,000 children are enrolled and in kindergartens 82,000 children are enrolled. The number of children at day carers is 60.000.

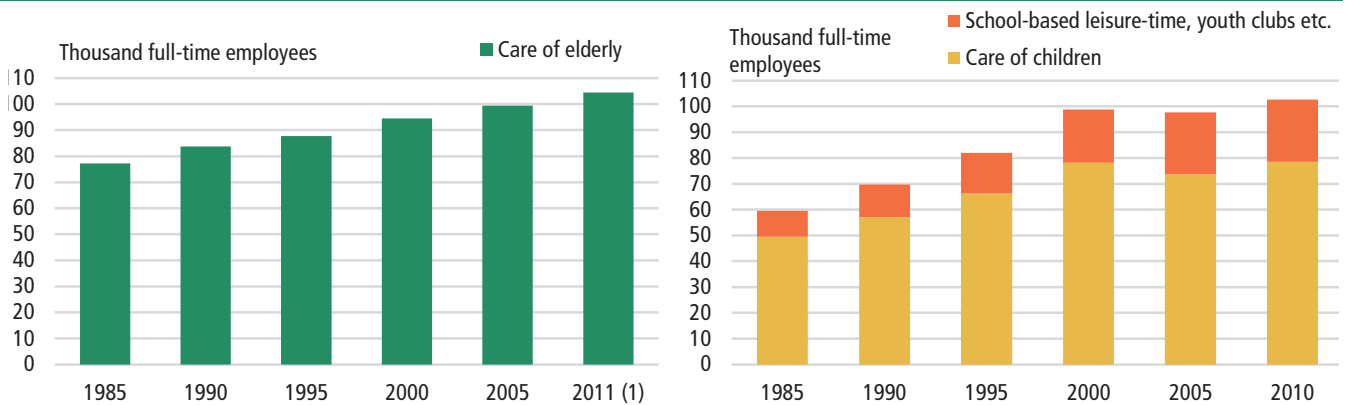
**Figure 3 Children in day care**



[www.statistikbanken.dk/pas11](http://www.statistikbanken.dk/pas11)

Staff requirements for looking after children reached 103,000 man-years in 2010. In 1985, 59,500 man-years were required and this has resulted in an increase of staff requirements by 72 per cent over the last 25 years.

**Figure 4 Employees in the social sector**



Note: There is a break in the data series from 2005 to 2011.

[www.statbank.dk/pas33](http://www.statbank.dk/pas33), res2, res2n, res10 and res10x

The staff number for schemes within outside school-hours care, etc. has risen by almost 150 per cent, while the staff number used in day-care institutions and for child day-care has risen by 60 per cent.

**More home help**

Out of a total of approximately 228,000 persons aged 80 and over, 122,000 received permanent home help, either in their own home, including dwellings for the elderly or in nursing homes/residential homes. Out of these 122,000 31,000 were men and 91,000 women. The share of persons receiving permanent help increases sharply concurrently with their age, 37 per cent among persons aged 80-84, 60 per cent among persons aged 85-89 and 92 per cent among persons aged 90 and over. In an international context it is important to emphasize that in Denmark persons living at nursing homes et al. are included in the number of receivers of home help.

There is also a sharp increase concurrently with age in the share of people living in nursing homes/residential homes. With regard to care of the elderly etc., the increasing number of staff is extensively related to the development in the population. Moreover, the number of staff in the municipalities has risen because e.g. physical rehabilitation and care of the handicapped has been transferred from the counties to the municipalities in connection with the structural reform of Danish municipalities. Staff working with nursing and care reached 104,500 man-years in 2011.

In recent times new social and health schemes such as preventive "home-visits", shared accommodation for disabled adults, contact persons and companion schemes have been established.

**More nursing homes and dwellings for the elderly**

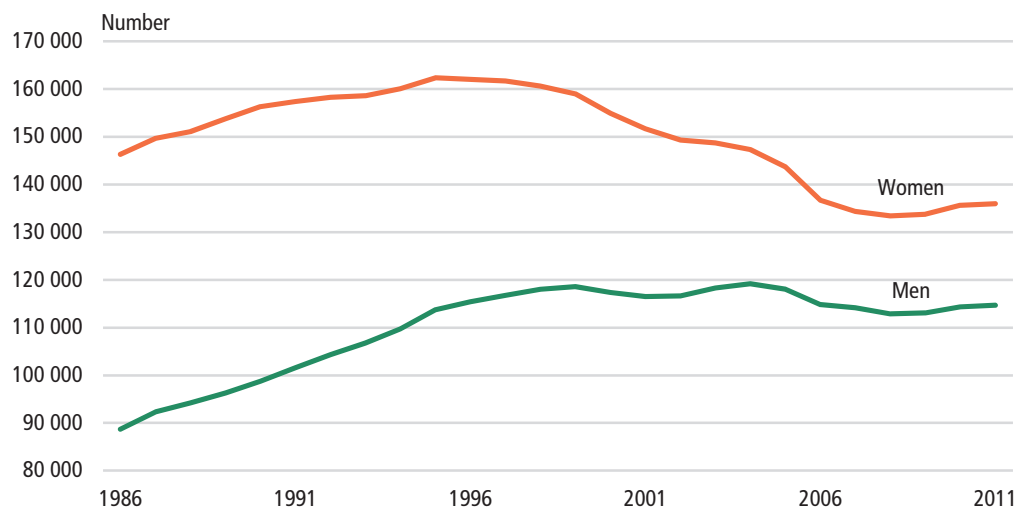
A restructuring in care of the elderly was undertaken from the middle of the 1980's, which implied that substantial efforts were made to enable the elderly to live in their own homes and an expansion of dwellings for the elderly as a replacement of the reduction in the number of residential homes.

Today, the number of nursing homes is 37,000, 7,500 residential homes and 1,500 protected homes and 35,000 general dwellings for the elderly. There is a total of 81,000 nursing homes and dwellings for the elderly supplied by 5,500 nursing dwellings for handicapped persons. In contrast, there were 49,000 residential homes, 7,000 protected homes and 4,000 dwellings for the elderly, i.e. a total of 60,000 nursing homes and dwellings for the elderly in 1987 (when homes and dwellings for the elderly were introduced into Danish legislation).

In the nursing homes and the residential homes the enrolled persons have 24-hour staff, common services and activities and linen service etc. This is also estimated to be the case in two out of three protected homes. The general homes are seen not as institutions, but as own homes, and the persons get the same amount of home help as people who live in apartments, one-family houses and row houses. The free-choice schemes established in 2003 also apply to these persons.

**A quarter of million persons on early retirement pension**

Early retirement pension is one of the transfer payments that is established according to the social legislation. 2011 251,000 persons were on early retirement pension. Of them 57,000 were aged 40-49, 94,000 were aged 50-59 and 62,000 were aged 60-64. 136,000 were women and 115,000 men.

**Figur 5 Early retirement pension**

<http://www.statbank.dk/pen1> and [pen11](http://www.statbank.dk/pen1)

Out of a total of 963,000 old-age pensioners aged 65 and over 529,000 were female and 425,000 male. Early retirement pay and other transfer payments are mentioned in the chapter Labour market.

#### Supplementary subsidy schemes

With regard to the supplementary subsidy schemes, a total of 208,000 households received DKK 247 million through rent subsidies in December 2011, while 295,000 pensioner households received a total of DKK 766 million through rent allowances. 693,000 families received child benefits, of which 132,000 families with a lonely provider also received an ordinary child allowance in the 4th quarter of 2010.

#### Parents have 267 days of maternity leave

Children born in 2010 were happy to see that their parents stayed at home to look after them for 267 days after their birth. The mothers accounted for the greater part of the maternity leave, 244 days, while the fathers had 23 days.

Only economically active persons are entitled to maternity leave and to maternity benefits. Among others who are not entitled to the maternity benefits you find, for example, students and recipients of social assistance, etc.

When 20,400 children experienced that only their mother had maternity leave, this does not always mean that the father was not at home. He might not have been economically active, or he might have spent his holiday at home with the child.

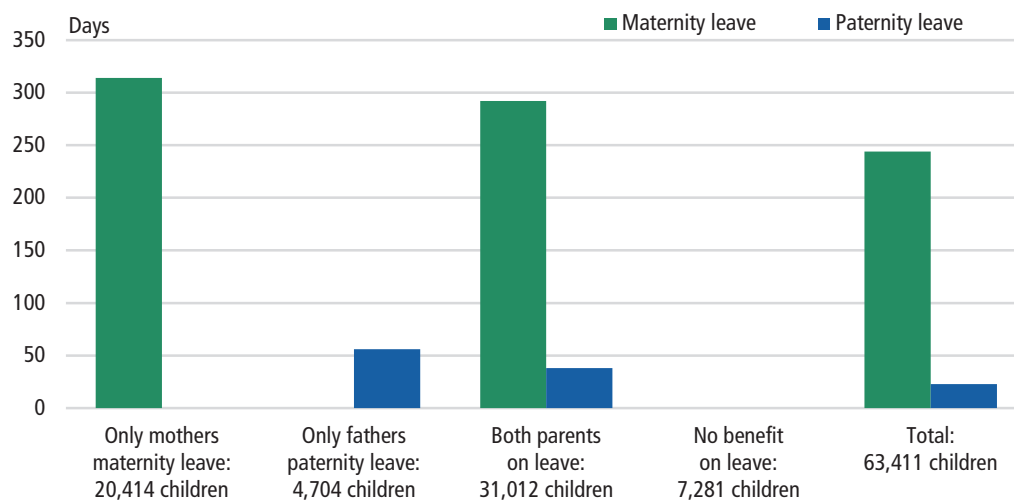
**Figure 6** Maternity and paternity leave after birth. 2010

Table 145

### Children and young people receiving assistance

At the end of 2009, 24,000 children and young people received assistance. The assistance includes placements outside home and various kinds of preventive measures. 13,000 children and young people were recipients of preventive measures, while there were another 13,000 placements outside home.

About 60 per cent of all preventive measures are in the form of relief stays for children and young people living at home. The share of children and young people who have a permanent contact person is 35 per cent.

## 2

### Health (correction)

#### Increase in Danes' life expectancies

Life expectancy is often used to measure the state of a population's health. In Denmark, life expectancy had stagnated until the middle of the 1990's, where the trend again became positive. Since 2000-2001 the life expectancy has increased 2.8 years for men and 2.4 years for women. However, life expectancy in Denmark is not among the highest in Western Europe. In 2010-2011, life expectancy was 77.3 years for men and 81.6 years for women.

There is no simple explanation for the stagnation in the Danes' life expectancy. Researchers point to both the Danes' lifestyle with regard to smoking, alcohol, diet and physical activity, as well as general conditions of life such as level of unemployment and initiatives made by the health-care authorities.

#### Danes' lifestyle

The proportion of the population who are smokers has fallen from about half of the Danes in 1980 to under a fifth in 2011. During the whole period, the share of male smokers has been higher than the share of female smokers. However, this difference has fallen considerably during the past ten years. In 2011 the proportion of daily smokers was for the first time higher for women with 18 and 17 for men.

In August 2010 the National Board of Health announced new recommendations for consumption of alcohol, not more than 14 alcohol units for men and 7 for

women is the low risk limit. The previous recommendation of not more than 21 units per week for men and 14 units for women is now the high risk limit. In 2010, 13.3 per cent of all men and 8 per cent of all women stated that they had exceeded this high risk limit.

In 1987, about a fifth of the population were not physically active in their leisure time. In 2005, this proportion had fallen to 13 per cent, while in 2010 it is 16 per cent.

Experts recommend that maximum 30 per cent of total intake of energy stems from fat. In 1985, fat represented 45 per cent of the men's and 43 per cent of the women's energy intake. In 2003-2008, these shares were reduced to 36 and 34 per cent. In the National Health Profiles 2010 the proportion of male and female indications of eating an unhealthy diet are respectively 18.0 and 8.7 per cent.

Figure 7 Danes' lifestyle



Note: Alcohol shows the percentage of the population who drink more alcohol than recommended by the National Health Board (21 alcoholic units for men and 14 for women).

Source: National Board of Health, Danish Heart Foundation, National Institute of Public Health, and Danish Institute for Food and Veterinary Research, National Health Profiles 2010 (Alcohol and No exercise)

### Use of health services

In addition to life expectancy and life style, health services are often used as an indirect method of measuring the health of the population. Information about the population's use of hospitals and National Health Service is stored in administrative registers in Denmark, which gives good basis to conduct statistical analyses.

### Capacity in hospitals

In 2010, there were 53 general and psychiatric hospitals in Denmark. In 2000 there were about 77 hospitals. The decrease is due to both hospital closures and mergers of hospitals, for instance in connection with a structural reform and merger of municipalities in 2007. The capacity in hospitals can be illustrated among others by the number of hospital beds. In 2010, there were a total of 18,300 hospital beds. In addition to this come the outpatient treatments and the treatments in emergency departments.

The bed occupancy rate for all hospitals was 90 per cent in 2010, which is the same as in the past four years. There are about 1.3 million admissions a year to the public general hospitals and 47,000 psychiatric admissions. In 2010 there were almost 7.5 million outpatient treatments of these 6.8 million in general hospitals. In addition, there are approximately 1 million visits to emergency departments.

### One out of nine is hospitalized during a year

Almost 645,000 people or 11.6 per cent of the population are hospitalized one or more times a year. The proportion of the population who has been hospitalized is lowest among 5-14-year-olds, 5 per cent, and increases with age. Thus, about one third of the population aged 85 and above is admitted at least once in the course of a year.

The average number of days in hospital beds also increases with age, approximately three days for 5-14-year-olds and more than 10 days for 75-year-olds and above. Women tend to have more bed days than men.

Patients in general hospitals were hospitalized 4.3 million days in 2010, exclusive the persons born or immigrated during the year. The average number of bed days for these persons were 6,6 days. The same person can have had more than one hospitalization.

### The pattern of diagnosis

The most common cause of hospitalization for women is in connection with pregnancy, births, and abortions. When hospitalization due to birth, etc., is disregarded, diseases of the circulatory system and bodily injury and poisoning are the most common causes of hospitalization for both men and women.

Almost 87,000 persons are hospitalized annually due to diseases of the circulatory system and 92,000 due to bodily injury, for each group corresponding to about 14 per cent of the hospitalized. However, there are marked differences between the different age groups, for example 36 per cent of hospitalized 1-4-year-old boys and 31 per cent of 1-4-year-old girls are admitted because of respiratory diseases, and approximately 16 per cent of hospitalized 65-74-year-olds are admitted because of neoplasms.

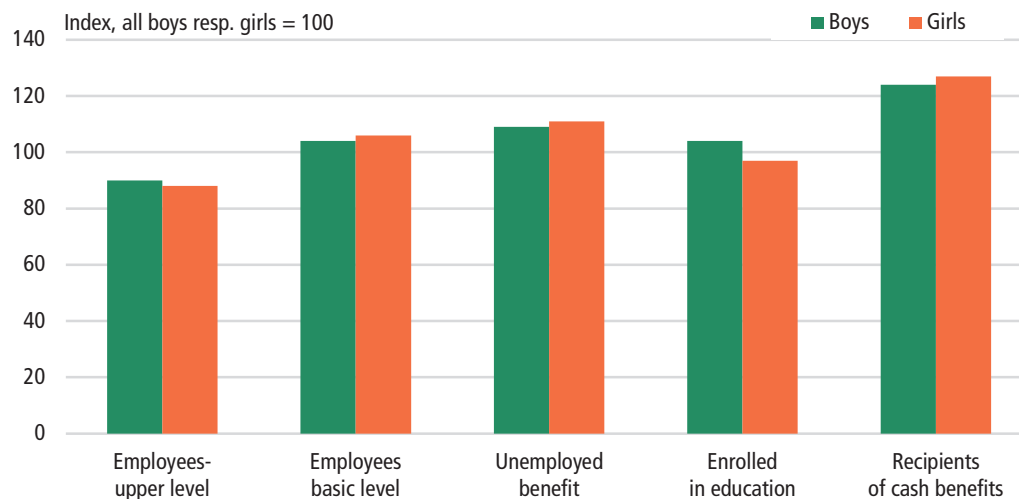
### Social differences determine use of hospitals

It is a fact that the use of hospitals to a large extent is determined by social conditions. For example, adults who have completed education at third level (long-cycle higher education) use hospitals 35 per cent less than the average person, while adults without qualification from education use hospitals 32 per cent more than the average person.



Social conditions also affect children's use of hospitals. For example, boys and girls who live with families with the socioeconomic status of recipients of cash benefits use hospitals 24 and 27 per cent more than the average child. As opposed to this, children who live with families with the socioeconomic status of employees upper level use hospitals approximately 10-12 per cent less than the average child.

**Figure 8** Frequency of hospitalization by socioeconomic status of the family. 2010



Note: Children aged 0-17.

**Figure 9** Expenditure on medication

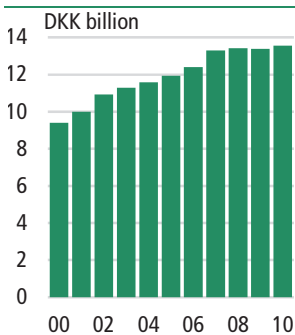


Table 174

Source: Danish Medicines Agency.

### 94 per cent used the National Health Service in 2010

All persons who live in Denmark are covered by the National Health Service and can therefore receive full or partial compensation for all expenses related to visits to a GP, a specialist doctor, dentist, chiropractor, chiropodist, physiotherapist, etc. Approximately 5.2 million people or 94 per cent of the population made use of this in 2010, and every person had contact with a GP, a specialist doctor, dentist etc. 11.3 times on average.

Slightly more women than men received national health benefits. About 4.8 million contacted a GP and 2.5 million persons older than 17 years contacted a dentist one or more times. Both eye and ear specialists were each contacted by about 0.5 million people, and chiropractors by 0,3 million people.

### Expenditure on medication increases

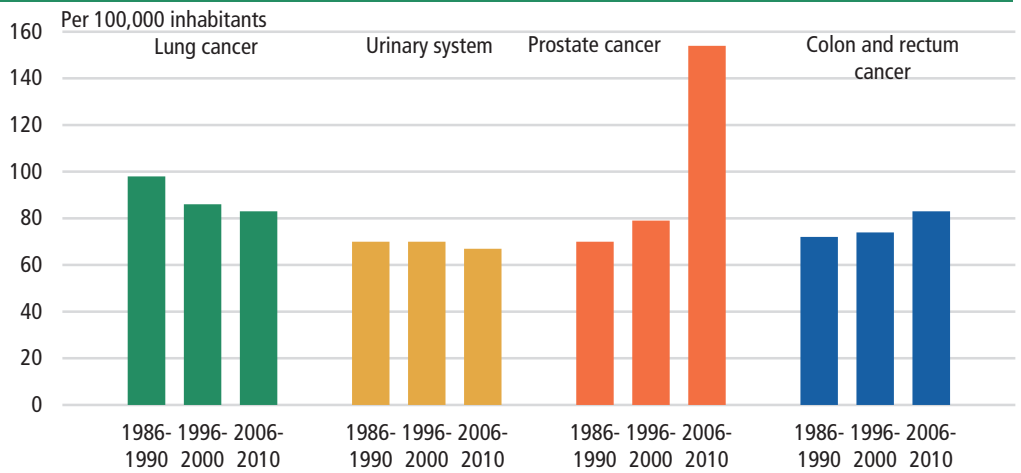
Approximately 40 per cent of the population used medicine regularly and approximately 60 per cent have used medication within a 14-day period in 2005. More women than men use medication and the use of medication increases with age. The most commonly used types of prescription medicine are analgesic medication (pain killers), medicine for lowering blood pressure and medication for the heart.

The turnover of medicine has increased steadily during the last 10 years, though the increase has slowed down the recent years. In 2000, turnover accounted for DKK 9.4 billion and DKK 13.6 billion in 2010. This is equivalent to an increase of 45 per cent. In 2010, turnover of tranquillizers accounted for DKK 4.3 billion and drugs for the respiratory organs DKK 1.9 billion and drugs for cardiovascular for DKK 1.7 billion.

### Sharp increase in the number of cancer cases since the 1980s

In 2010 35,500 new cases of cancer were registered, and by the end of 2010 there were about 235,000 persons who lived with a cancer disease. Among the new registrations, breast cancer was the most common form of cancer among women, and cancer in the neck of the bladder (prostate) was the most common among men.

**Figure 10** New cases of selected types of cancer among men

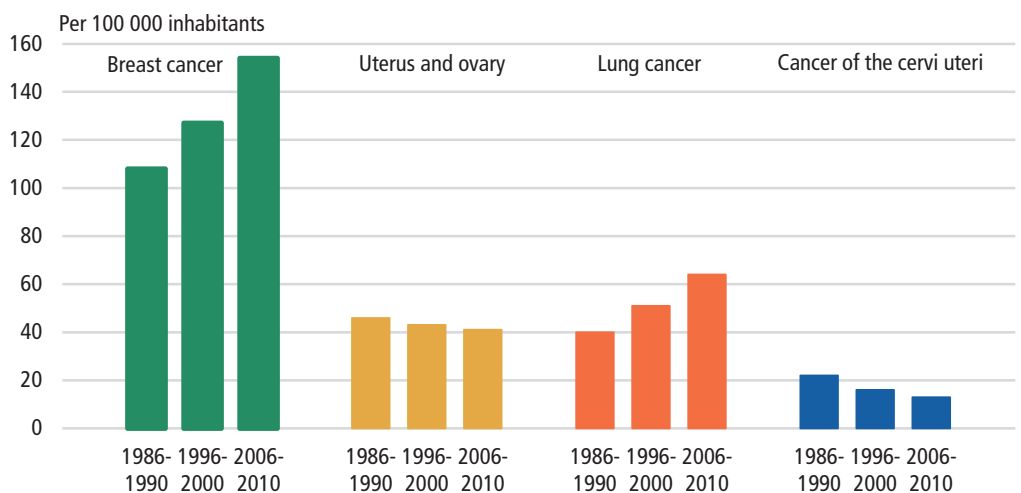


Note: The figures are calculated over a five-year period and have been standardised to comply with the Danish composition of population in 2000.

Source: National Board of Health, Denmark

In the course of the last 25 years, the annual number of new incidents of cancer, measured in relation to the size and age of the population, has increased by more than 20 per cent. Breast cancer was also the most common type of cancer among women 25 years ago. However, for men, lung cancer was the most common type of cancer at that time.

**Figure 11** New cases of selected types of cancer among women



Note: The figures are calculated over a five-year period and have been standardised to comply with the Danish composition of population in 2000.

Source: National Board of Health, Denmark

### The number of AIDS patients is on a low level

In the period 1980-2011, a total of 2,878 people were diagnosed with AIDS. Of these, 2,058 had died by 31 December 2011. The number of diagnosed peaked in 1993 with 239 and hereafter it has generally fallen until 2000, since when the number of diagnosed each year has been relatively stable. In 2011, 56 persons were diagnosed.

Registration of HIV-positive patients did not begin until August 1990. Until the end of 2011, a total of 6,152 HIV-positive people were reported. In 2011 259 person were reported HIV-positiv.

### Decrease in the number of chlamydia and gonorrhoea cases

In 2011, the number of cases of chlamydia is about 27,000, a decrease by 3 per cent compared to 2010. Women account for the greater part (61 per cent in 2011) of the cases. With regard to gonorrhoea, it is just the opposite, as 79 per cent of all cases of gonorrhoea are among men. The number of cases of gonorrhoea is 339 in 2011, a decrease by 8 per cent compared to 2010.

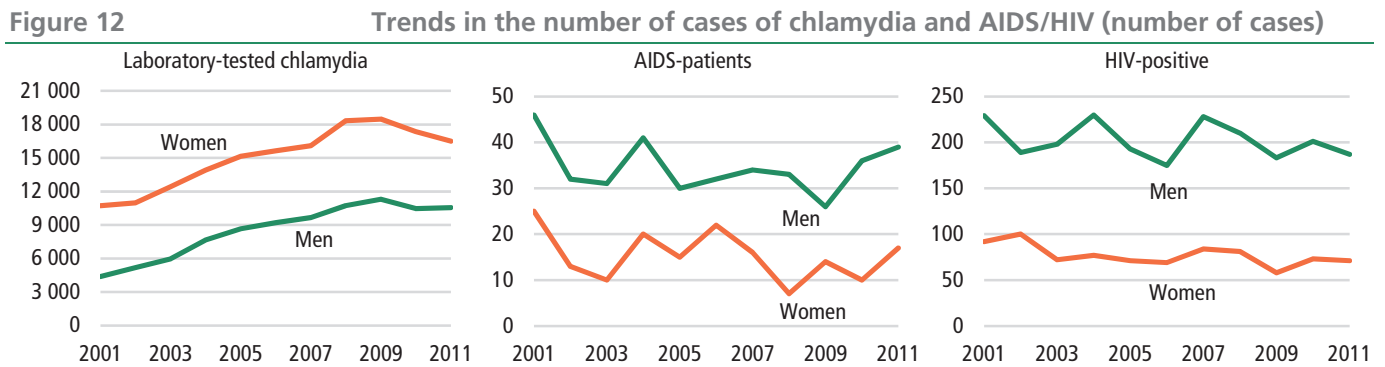


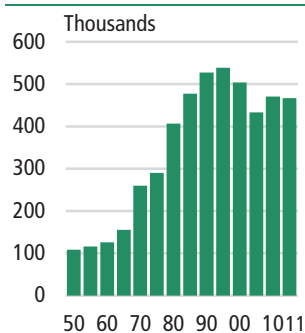
Table 167-169

Source: National Serum Institute.

## 3

### Justice

**Figure 13 Reports under the Penal Code**



[www.statbank.dk/straf22](http://www.statbank.dk/straf22)

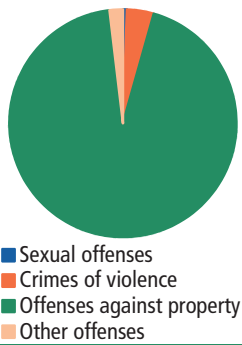
#### Crime and the administration of justice

Justice includes statistics regarding crime and the administration of justice. The analyses of justice illustrate the rulings made by courts in criminal law suits and civil law suits.

Crime in Denmark is analysed as both reported crimes and criminal decisions in connection with violation of either the Penal Code, the Road Traffic Act or special acts, and the number of victims of certain offences against the Penal Code.

Crime statistics cover only reported criminal offences, whereas the so-called "hidden" crimes or underreported figures (i.e. unreported criminal offences) are not compiled.

**Figure 14**  
Reports under  
the Penal Code by  
type. 2011



[www.statbank.dk/straf22](http://www.statbank.dk/straf22)

### The number of reported crimes decreased slightly

From 1950 to 1994, the number of reported criminal offences increased from about 110,000 to almost 550,000. Since then the number of reported criminal offences decreased until 2006 where 425,000 offences were reported. In the years hereafter the number of reported criminal offences increased again and in 2009 the police received almost 0.5 million reports of crimes. The number of reported criminal offences fell both in 2010 and 2011 and amounted to 467,000 in 2011.

In 1950, the number of reported crimes corresponded to 3,500 reports per 100,000 inhabitants (older than 15 years) compared to 12,700 reports in 1994 and 10,200 in 2011.

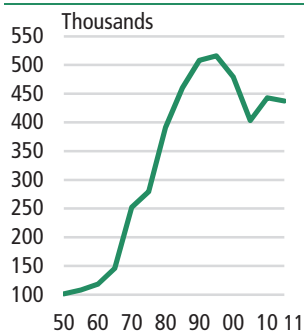
The large increase in reported offences is mainly due to an increase in reported offences against property and misappropriations. They comprise, for example, burglaries in shops and houses, as well as car thefts and bicycle thefts, which are typically subject to insurance contracts, where a police report is a prerequisite of claiming damages from the insurance company. The high number of burglaries and thefts should also be seen in the context of increasing wealth in society. There is a sharp increase in the possession of valuable objects, and many dwellings are left unoccupied in the daytime.

The decrease since 1994 has also occurred in the number of reported offences against property and misappropriations, where the decrease is primarily seen in the number of thefts and burglaries. The decrease in the number of stolen cars is probably due to improved theft prevention in modern cars.

The increase since 2006 is mainly an increase in the number of burglaries, both in banks, shops, private homes and second homes. But also bag-snatching, pick pocketing, thefts of number plates and of bicycles have increased the last years.

The fall from 2009 to 2011 especially concerns fewer burglaries, fewer thefts of bicycles and fewer cases of malicious damage.

**Figure 15**  
Reported offences  
against property



[www.statbank.dk/straf22](http://www.statbank.dk/straf22)

### Offences against property

The number of reported offences against property each year makes up 90-95 per cent of the annual number of crimes reported. In 2011, 438,000 offences against property were reported, which is less compared to the first half of the 1990s, when more than 500,000 offences against property were reported every year.

In 2011, there were 92,000 burglaries and 193,000 thefts, including 45,000 burglaries in houses and flats, and furthermore 13,000 car thefts and 71,700 bicycle thefts.

### Violent crimes

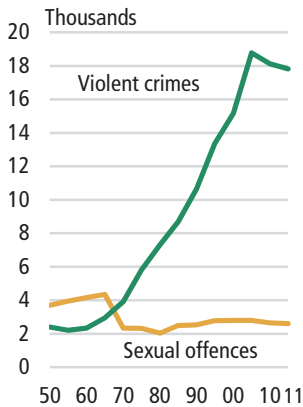
The number of reported violent crimes (e.g. homicide, assault against the individual or public authority) has risen significantly since the Second World War, from approximately 2,400 reports in 1950 to 19,500 in 2006. The following couple of years the number of violent crimes decreased and have since constituted approximately 18,000 reported offences yearly.

Almost 60 per cent of all reported acts of violence are assault against the individual, while the remainder is mainly violence, etc. against public authorities (16 per cent) and threats (20 per cent). The dangerousness of violence against the indi-

vidual is distributed to the following groups: *Simple violence, more serious violence and very serious violence.*

In total, there were 10,500 reported offences of these kinds in 2011. Simple violence is the most common (84 per cent) and has increased by 29 per cent since 1990.

**Figure 16**  
Reported violent crimes and sexual offences



www.statbank.dk/straf22

In 2011, there were 197 reported homicides or attempts at homicide. In comparison the number was 234 in 1990. In 2011, 49 homicides were accomplished. Since 1990, there has been between 200 and 250 homicides or attempts at homicide on the whole.

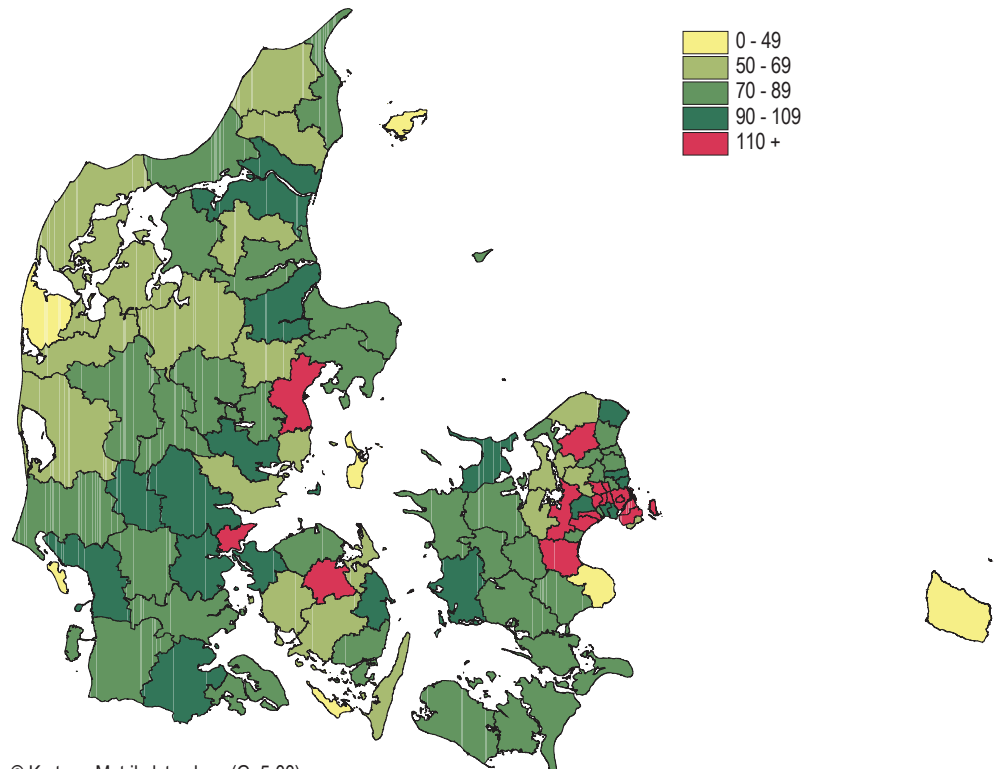
### Sexual offences

Sexual offences (e.g. rape or indecent exposure) fell in the last part of the 1960s (coinciding with the repeal of the Pornography Act), and has since then been steady at 2-3,000 reports a year with a slowly increasing tendency. The number peaked in 2004 and decreased until 2009. From 2009 to 2010 there was a substantial increase by 18 per cent, mainly due to more reported offences against decency. 2,600 sexual offences were reported in 2011. More than half of today's reports are of indecent exposure (57 per cent), while rape accounts for 16 per cent).

### Highest number of reported crimes in cities and urban areas

There is no steady regional distribution of reported criminal offences in Denmark. Reported crimes are concentrated in cities and large towns and urban areas, whereas the number in rural municipalities is low – except for some municipalities with large summer cottage areas.

**Figure 17** Reported criminal offences per 1,000 inhabitants. 2011



© Kort- og Matrikelstyrelsen (G. 5-00)

www.statbank.dk/straf22, bef607 and folk1

There are many reported offences against property and reported violent crimes in cities and urban areas, while summer cottage areas mainly account for burglaries and thefts.

### Less than every five reports lead to a charge

Charges are pressed in less than every fifth of the 450-500,000 reports, either against one or several people.

In 2011, charges were pressed in 18 per cent of the reports. The charge rate typically varies according to how serious the crime is or its type.

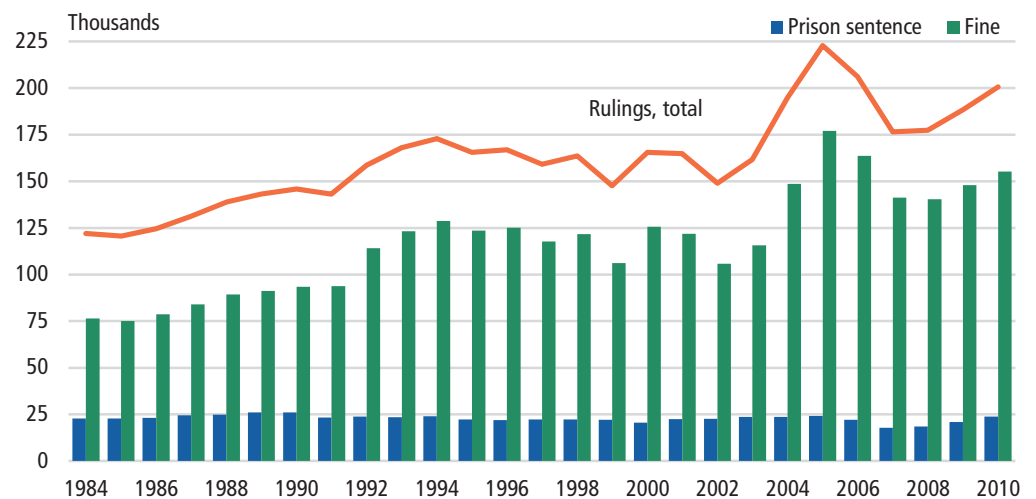
Thus charges are normally pressed in connection with 78 per cent of violent crimes and 70 per cent of sexual offences, charges are only pressed in 14 per cent of offences against property.

### Criminal decisions

Based on reports where the police have pressed charges and investigations have been closed as well as violations of the Road Traffic Act, almost 200,500 criminal decisions were made in 2010.

The accused was either fined, given a prison sentence or acquitted. The number of criminal decisions is primarily due to the number of violations of the Road Traffic Act.

**Figure 18** Criminal decisions, total, and convictions resulting in fine or prison sentence



www.statbank.dk/straf4 and straf44

In 2010, 53,600 rulings concerned the Penal Code, 117,100 concerned the Road Traffic Act and the remaining 29,800 concerned other special acts (e.g. Euphoricants Act, Police Regulations, Firearms Act or Act on Animal Welfare).

In 2010, 200,500 decisions comprised a total of 290,800 criminal offences for charges committed by 159,700 different individuals, i.e. a number of individuals have received more than one ruling in the course of the year, just as several decisions comprise more than one charge.

**Most decisions are fines**

Of the 200,500 decisions in 2010, most of them were, by far (155,100), fines, of which almost three-fourths originated from violation of the Road Traffic Act.

23,800 decisions were prison sentences (lenient imprisonment or imprisonment), and the remaining 21,600 decisions include no charges, dropped charges or acquittal. 11,700 or about half of the prison sentences were unconditional in 2010.

**Male offenders account for the greatest number of criminal decisions**

Almost 80 per cent of all criminal decisions in 2010 involve men, but the proportion of violations by women is increasing. In 2010, 19 per cent of all criminal decisions concerned women compared to 9 per cent in 1980.

The proportion of violations against the Penal Code by women has increased during the same period from 15 to 19 per cent and against the Road Traffic Act from 6 to 22 per cent.

A minor proportion of the decisions (less than 2 per cent) are against enterprises (such as violations of Road Traffic Act and environmental acts).

**Increase in the number of women convicted of violent crimes**

Since 1990, the number of women committing violent crimes has quadrupled from 329 to 1,364 in 2010. The increase is greatest for women in the age group 15-19 years, where the number has become almost eight times as great since 1990. Common assault, grievous assault, assault against public authority and threats account for the largest increase.

The 15-19-year-olds constituted 32 per cent of the decisions. 50 per cent or half of the women were below the age of 25 years.

Furthermore, the number of women sentenced to imprisonment in connection with convictions of violent crimes has doubled six times since 1990 – a total of 668 in 2010. Almost one fourth (24 per cent) was sentenced to prison.

**Most violent crimes are committed by young men**

In 2010, the average age of offenders was 36 years for men and 39 years for women – but there are variations among the different criminal offences.

The lowest average age is that of violent criminals (30 years). About one fifth of all violent crimes are committed by young men below 20 years – all in all a little below 90 per cent of crimes of violence is committed by men.

The average age of persons committing sexual offences is somewhat higher and was 37 years in 2010. Similarly, the average age of persons committing financial crimes was higher.

The average age of persons having committed fraud against creditors, gross tax fraud, etc. or offences against legislation relating to taxation and excise duties ranged between 41 and 45 years.

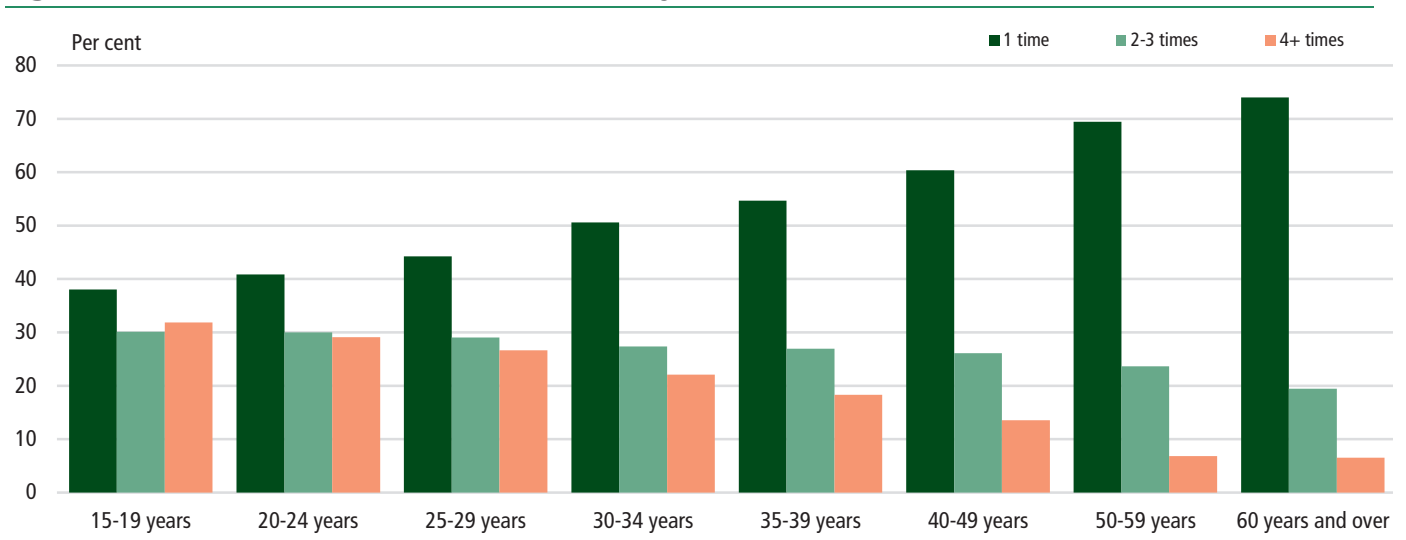
### Young men most often commit new crime

Half of the men aged 15-19-years who in 2007 were released after serving in jail or had received a conviction committed a new crime within two years. The average for all men was 32 per cent. For women, the pattern was the same but with much less variation: 18 per cent for women aged 15-19 years and 14 per cent in average for all women.

The young men also commit the crime earlier. Thus, among young men below the age of 30 years, 45 per cent committed a new crime within six months while the corresponding figure for men aged 50 years or more was 31 per cent.

Figure 19

### New crime committed by men. 2007-2009



[www.statistikbanken.dk/recidiv5](http://www.statistikbanken.dk/recidiv5)

The proportion of people who committed a new crime was highest for those who were released after serving in jail. Here the proportion was 60 per cent while it was 26 per cent for people who were sentenced a fine.

Among men and women there was 49 per cent respectively 66 per cent who only commit one new crime within two years. Corresponding, there was 32 per cent among the men and 18 per cent among the women who committed three or more new crimes.

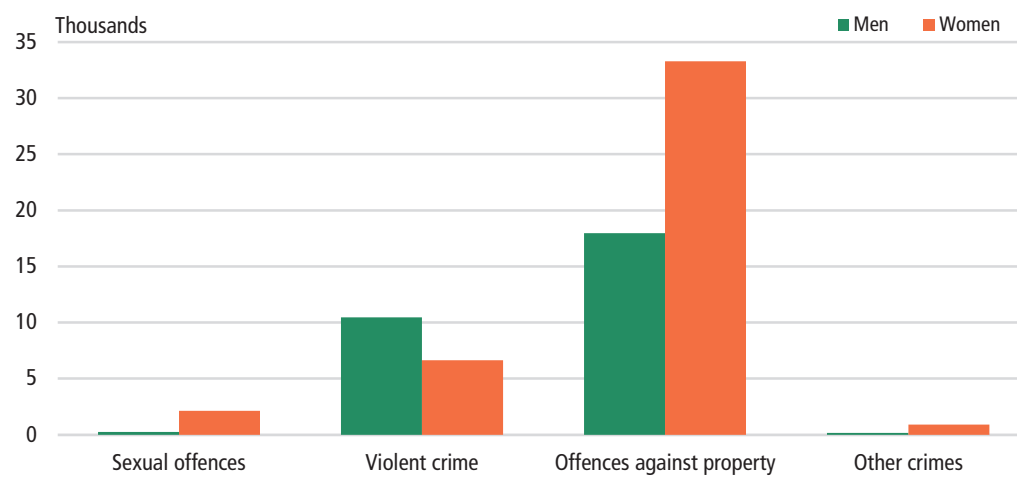
### Victims of criminal offences against the Penal Code

In 2011, 90 per cent of all victims of sexual offences were women, while nearly all sexual offences were committed by men. In contrast, one third of all victims of violent crimes were women, but also here the overall part of the offences were committed by men.

The average age of the female victims of sexual offences was 21 years, and 14 per cent were less than 10 years. The average age of victims of violence was older 31 years for men and 32 years for women.

2 per cent of the victims of violence were less than 10 years, and less than 1 per cent were more than 70 years.



**Figure 20** Victims of violations against the Penal Code. 2011

[www.statbank.dk/straf5](http://www.statbank.dk/straf5)

**Table 136** Welfare institutions for children and young people. 2010

October	Number of institutions	Number of clients	Staff
<b>Day-care institutions</b>	<b>7 236<sup>1</sup></b>	<b>663 178<sup>2</sup></b>	<b>103 085<sup>3</sup></b>
Day-care	•	60 358	19 534
Nurseries	305	11 756	4 724
Kindergartens	1 750	82 094	17 491
Age-integrated institutions	2 460	170 157	36 404
School - care schemes	1 863	234 666	19 289
Recreation centres	184	17 249	1 840
Full-day school	67	3 750	...
Clubs etc., for children and juveniles	573	76 332	3 777
Playgroups	12	192	26
Subsidy to private day-care	15	429	...
Private established kindergartens	7	100	...
Private established playgroups	5 466 <sup>4</sup>	5 227	...
Subsidy for day-care of own children	738 <sup>4</sup>	868	...

<sup>1</sup> Exclusive municipal day care and subsidies for day care of own children, etc. <sup>2</sup> As the same child can be in more than one type of day care the sum will be somehow overestimated. <sup>3</sup> The figures about staff for 2009. Excl. staff in full-day school, etc. <sup>4</sup> Number of parents receiving subsidies.

[www.statbank.dk/pas22](http://www.statbank.dk/pas22)

**Table 137** Welfare institutions for elderly people. 2011

	Number
<b>Total</b>	<b>82 277</b>
Nursing homes	7 169
Protected dwellings	1 424
Nursing dwellings mainly for elderly persons	34 710
Nursing dwellings mainly for persons with mental/physical handicaps	3 663
Private nursing homes/private dwellings	415
General dwellings for elderly persons	33 699
General dwellings mainly for persons with mental/physical handicaps	1 197

[www.statbank.dk/resi01](http://www.statbank.dk/resi01)

**Table 138** Welfare institutions and services for adults. 2011

	Number of institutions	Number of clients	
		Users	Residents
<b>Total</b>	<b>1 669</b>	<b>75 703</b>	<b>15 551</b>
Permanent residence schemes at an institution section 108 <sup>1</sup>	537	•	8 982
Temporary residence schemes at an institution section 107 <sup>1</sup>	709	•	6 008
Sheltered workshop and activity and drop-in centres sections 103 and 104	658	32 082	•
Crisis centres	42	•	561
Support and contact persons for mentally disordered, drug- and alcohol misusers and homeless section 99 <sup>2</sup>	•	5 043	•
Contact persons for persons who are both deaf and blind section 98 <sup>2</sup>	•	338	•
Companion schemes pursuant to sections 45 and 97 <sup>2</sup>	•	8 512	•
Socio-pedagogical assistance and treatment pursuant to sections 85 and 102	•	29 728	•

<sup>1</sup> 279 residence schemes at an institution have both section 107 and section 108. <sup>2</sup> For a few number of municipalities there are no figures.

[www.statbank.dk/resv01](http://www.statbank.dk/resv01) and [resv05](http://www.statbank.dk/resv05)

Table 139 Social welfare expenditure

	In cash		In kind <sup>1</sup>		Total	
	2009	2010	2009	2010	2009	2010
	DKK mio.					
<b>Social protection expenditure, total</b>	<b>311 623</b>	<b>335 175</b>	<b>227 317</b>	<b>233 438</b>	<b>553 838</b>	<b>583 628</b>
<b>Administration<sup>2</sup></b>	<b>•</b>	<b>•</b>	<b>•</b>	<b>•</b>	<b>14 898</b>	<b>15 016</b>
<b>Sickness</b>	<b>19 155</b>	<b>19 795</b>	<b>106 222</b>	<b>108 252</b>	<b>125 376</b>	<b>128 047</b>
Sick day benefits paid by employers	3 957	3 683	-	-	3 957	3 683
Sick day benefits paid by municipalities	14 569	15 415	-	-	14 569	15 415
Doctor, contacts etc.	-	-	15 540	15 934	15 540	15 934
Hospitals and health authorities	-	-	80 901	82 533	80 901	82 533
Pharmaceutical products	-	-	7 161	7 366	7 161	7 366
Other	629	697	2 620	2 420	3 249	3 117
<b>Disabilities and rehabilitation</b>	<b>55 523</b>	<b>58 346</b>	<b>25 864</b>	<b>26 122</b>	<b>81 386</b>	<b>84 467</b>
Early retirement pension	33 859	36 272	-	-	33 859	36 272
Other	21 664	22 074	25 864	26 122	47 527	48 196
<b>Old age</b>	<b>165 805</b>	<b>179 762</b>	<b>34 299</b>	<b>34 462</b>	<b>200 104</b>	<b>214 223</b>
Old age, early retirement, and partial pensions	92 280	98 378	-	-	92 280	98 378
Early retirement pay etc.	23 194	23 354	-	-	23 194	23 354
Labour market supplementary pension and SP	9 350	10 293	-	-	9 350	10 293
Civil servants earned pensions <sup>3</sup>	22 453	23 174	-	-	22 453	23 174
Labour market pensions <sup>4</sup>	18 528	24 562	-	-	18 528	24 562
Residential institutions for pensioners and home help, etc. <sup>5</sup>	-	-	34 299	34 462	34 299	34 462
<b>Survivors</b>	<b>1</b>	<b>2</b>	<b>134</b>	<b>143</b>	<b>135</b>	<b>145</b>
<b>Families and children</b>	<b>27 130</b>	<b>27 597</b>	<b>42 446</b>	<b>43 050</b>	<b>69 576</b>	<b>70 648</b>
Benefits received during pregnancy and in connection with childbirth	9 980	10 055	-	-	9 980	10 055
Parental leave	159	85	-	-	159	85
Family/young persons' allowance and child cheque	16 485	16 942	-	-	16 485	16 942
Advance payments of child maintenance	505	516	-	-	505	516
Day institutions, day care	-	-	28 409	28 811	28 409	28 811
Residential institutions	-	-	14 022	14 224	14 022	14 224
Other	-	-	16	15	16	15
<b>Unemployment</b>	<b>34 051</b>	<b>39 422</b>	<b>1 482</b>	<b>3 140</b>	<b>35 533</b>	<b>42 562</b>
Unemployment benefit	15 287	18 839	-	-	15 287	18 839
Activation	18 764	20 583	1 482	3 140	20 246	23 723
<b>Housing</b>	<b>-</b>	<b>-</b>	<b>12 433</b>	<b>13 181</b>	<b>12 433</b>	<b>13 181</b>
Rent subsidies	-	-	2 707	3 111	2 707	3 111
Pensioners' rent subsidies	-	-	9 725	10 070	9 725	10 070
<b>Other social protection benefits</b>	<b>9 959</b>	<b>10 251</b>	<b>4 438</b>	<b>5 088</b>	<b>14 397</b>	<b>15 338</b>
Social assistance	8 083	8 793	-	-	8 083	8 793
Danish Employees' Guarantee Fund	1 172	669	-	-	1 172	669
Other	704	789	4 438	5 088	5 142	5 876
<b>Social protection benefits, total</b>	<b>311 623</b>	<b>335 175</b>	<b>227 317</b>	<b>233 438</b>	<b>538 941</b>	<b>568 613</b>

Note: Social expenditure is calculated according to a system for comparison of social expenditure between EU countries.

[www.statbank.dk/udg1](http://www.statbank.dk/udg1)

<sup>1</sup> According to Eurostat's definition a benefit in kind is a social security benefit allotted as goods or services - a benefit in kind may be allotted directly or as cash payment, i.e. reimbursement against documentation of the actual expenses. <sup>2</sup> Administration expenditure is separated from current expenditure as far as possible, and gathered as one item. <sup>3</sup> Includes state and municipality civil servant pensions and state supplementary payments to retiring civil servants. <sup>4</sup> I.e. pension funds and life insurance companies under the Danish Financial Supervisory Authority. <sup>5</sup> Including care and home help for pensioners.

Table 140 Cash rates for social security benefits

	1/10 2010	1/10 2011
<b>Family allowances</b>	DKK/quarter	
Ordinary, maximum per child	1 217	1 240
Special; orphans	6 212	6 336
Special supplement; orphans	804	822
Special; children of widows/widowers, etc.	3 108	3 168
Extra; maximum per family	1 239	1 263
Multiple births benefits	2 006	2 044
Family-allowance, per child 0-2 years	4 247	4 248
Family-allowance, per child 3-6 years	3 362	3 363
Family allowance, per child 7-15 years	2 645	2 646
Youth allowance, per child 15-17 years	...	882
<b>Child maintenance</b>	DKK/year	
Payable by the father or the mother	12 432	12 672
<b>Daily benefits</b>	DKK/week (7 days)	
Sickness, childbirth, adoption, maximum	3 760	3 830
	DKK/week (5 days)	
Unemployment benefit, maximum		
Full-time insured	3 760	3 830
Part-time insured	2 505	2 555
First job seekers, full-time	3 085	3 140
<b>The new early retirement pay</b> (for persons born after 1.7.1939)	DKK/year	
Start at age 60 = 91% of the maximum day benefit amount	177 840	181 2240
Start at age 62 = maximum day benefit amount	195 520	199 160
<b>Social pensions</b>	DKK/month	
Married couple, both pensioners, benefit to each spouse:		
Basic payment, maximum	5 448	5 552
Pension supplement, maximum	2 735	2 787
Disability amount	2 650	2 700
Work incapacity amount when both are entitled	3 657	3 726
Single or married persons when only one spouse is a pensioner:		
Basic payment, maximum	5 448	5 552
Pension supplement, maximum	2 735	2 787
Pension supplement, single in reality	5 658	5 766
Disability amount	2 650	2 700
Work incapacity amount	3 657	3 726
Partial pension, maximum 30 hours/week	10 833	11 034
<b>Total pension benefit, maximum</b>		
Maximum early retirement pension:		
Married couple, both entitled, benefit to each spouse	14 490	14 765
Others	17 413	17 744
New early retirement pension (from 1.1.2003):		
Married couple	13 842	14 105
Others	16 285	16 594
Old-age pension benefit:		
Married couple, both entitled, benefit to each spouse	8 183	8 339
Others	11 106	11 318
<b>Funeral help</b>	DKK	
Funeral assistance, section 16 (maximum)	9 450	9 650
Persons under 18 years (maximum)	7 950	8 050

<sup>1</sup> Daily cash benefits amount to 90 per cent of the previous salary or income, but up to a maximum of the amount stated.

Source: Ministry of Social- Integrations Welfare

[www.statbank.dk/05](http://www.statbank.dk/05)

**Table 141** Transfer payments by type of amount received. 2011

	18-24 years	25-39 years	40-49 years	50-59 years	60-64 years	65 years +	Total
	number of full-time participants						
<b>Total</b>	<b>52 868</b>	<b>229 924</b>	<b>169 057</b>	<b>189 776</b>	<b>204 096</b>	<b>970 700</b>	<b>1 816 421</b>
Registered unemployed, total	9 474	41 866	27 718	23 966	5 437	-	108 462
Unemployed recipients of unemployment benefits	5 039	33 929	23 647	22 113	5 029	-	89 757
Unemployed recipients of social assistance	4 435	7 936	4 072	1 854	408	-	18 704
Guidance and activities upgrading skills	11 580	22 470	11 209	7 094	1 113	-	53 468
Subsidized employment, total	5 976	30 846	27 820	32 021	9 784	-	106 446
Flex jobs	316	8 090	15 868	21 406	7 286	-	52 966
Unemployment allowance	91	2 538	4 039	5 144	509	-	12 321
Social assistance and rehabilitation	14 664	30 470	19 520	10 880	2 489	-	78 024
Sickness benefits	3 162	21 351	20 898	20 708	5 149	-	71 268
Maternity benefits	2 658	49 584	4 052	83	5	-	56 384
Early retirement pension	4 803	27 484	52 095	88 480	64 969	-	237 832
Early retirement pay	-	-	-	-	114 287	-	114 287
Old-age pension <sup>1</sup>	-	-	-	-	-	970 700	970 700
Other benefits	458	3 313	1 707	1 398	355	-	7 230
	per cent						
Per cent of population in the age group	8.3	22.3	20.7	26.3	58.2	100.3	40.1

<sup>1</sup> The number of old-age pensioners is estimated as an average for the year. Incl. persons living outside Denmark

[www.statbank.dk/auh01](http://www.statbank.dk/auh01)

**Table 142** Family allowances. 2010

	Number of families	Number of children	Payments in DKK thousands	Average payments per family in DKK
<b>Family allowances, total<sup>1</sup></b>	<b>693 204</b>	<b>1 203 560</b>	<b>4 198 759</b>	<b>6 057</b>
Family allowances, all families	693 068 <sup>2</sup>	1 203 368	3 664 113	5 287
Ordinary family allowances	131 841	200 593	244 084	1 851
Additional family allowances	130 837	•	162 092	1 239
Special family allowances	23 890	33 608	109 272	4 566
Multiple birth family allowances	9 431	9 571	19 198	2 036

<sup>1</sup> Total number of families and children 4th quarter, has been calculated net, i.e. as the number who received one or more types of allowance. <sup>2</sup> The lower total number of family allowances is because some persons receiving benefits are not liable to pay taxes, because they live abroad, or, if the recipient is the father, he must apply.

[www.statbank.dk/bts4](http://www.statbank.dk/bts4), [bts5](http://www.statbank.dk/bts5) and [bts6](http://www.statbank.dk/bts6)

**Table 143** Children receiving assistance. 2009

	Number by age group			Males	Females	Total
	0-6 years	7-14 years	15-17 years			
31 December						
<b>Total number receiving assistance</b>	<b>2 467</b>	<b>7 094</b>	<b>16 139</b>	<b>14 828</b>	<b>10 863</b>	<b>25 700</b>
<b>By kind of place</b>	<b>1 367</b>	<b>2 965</b>	<b>8 498</b>	<b>7 004</b>	<b>5 817</b>	<b>12 830</b>
Network foster family	91	150	230	236	235	471
Placement with relatives	26	64	122	97	115	212
Other foster care	984	1 846	2 746	2 887	2 688	5 576
Residential institution, secured	0	4	49	45	8	53
Residential institution, other	112	364	1 432	1 182	725	1 908
Emergency institution	31	82	188	150	147	301
Socio-educational residence, workshop or production school, mini-institution	19	223	1 995	1 341	895	2 237
Boarding, youth, continuation school, etc.	0	3	531	283	251	534
Own room, etc.	0	1	440	179	262	441
Shipping project	1	0	37	34	4	38
Municipal offer of full-time facility	65	167	544	406	370	776
Not stated	38	61	184	164	117	283
<b>Preventive measures (net)</b>	<b>1 100</b>	<b>4 129</b>	<b>7 641</b>	<b>7 824</b>	<b>5 046</b>	<b>12 870</b>
Personal adviser	12	63	358	238	195	433
Permanent contact person	111	752	3 950	2 939	1 874	4 813
Relief stays	994	3 408	3 128	4 536	2 994	7 530
Trainee period	1	8	579	438	150	588
Phasing-out scheme in the care facility	•	•	2	2	0	2

 www.statbank.dk/BIS01 and BIS2B

**Table 144** Child maintenance. 2010

	Children total <sup>1</sup>	Number of parents entitled to benefits	Disbursed by local government	Received by local authorities from persons liable to pay child maintenance	Local authorities claims outstanding at end of year <sup>2</sup>
	number		DKK mio.		
<b>Denmark. total</b>	<b>146 390</b>	<b>99 460</b>	<b>1 813.2</b>	<b>1 382.7</b>	<b>5 387.8</b>
Region Hovedstaden	39 893	27 651	495.5	373.3	1 742.3
Region Sjælland	26 851	18 451	332.7	251.2	821.3
Region Syddanmark	32 810	22 086	403.7	312.6	1 178.7
Region Midtjylland	31 368	20 796	388.4	292.2	1 143.1
Region Nordjylland	15 468	10 476	192.9	153.3	502.5
Province København by	15 382	10 558	193.3	160.7	896.2
Province Københavns omegn	13 642	9 527	167.9	118.0	484.1
Province Nordsjælland	9 596	6 689	118.2	82.4	322.2
Province Bornholm	1 273	877	16.1	12.1	39.8
Province Østsjælland	6 035	4 208	74.5	54.2	169.2
Province Vest- og Sydsjælland	20 816	14 243	258.2	196.9	652.1
Province Fyn	13 408	9 076	164.6	128.6	508.9
Province Sydjylland	19 402	13 010	239.1	184.0	669.8
Province Østjylland	20 643	13 722	256.4	189.8	823.7
Province Vestjylland	10 725	7 074	132.0	102.5	319.4
Province Nordjylland	15 468	10 476	192.9	153.3	502.5

<sup>1</sup> Age at end of year. <sup>2</sup> In addition to advance payments of child maintenance, claims outstanding at the end of the year also include other types of payment (e.g. alimony and education payments) as these amounts cannot be separated.

www.statbank.dk/bidrag11 and bidrag22

**Table 145** Maternity and paternity leave in 2010-2011 shared between the father and mother - children born in 2010

	Children	Children in per cent.	Average number of days
<b>Birth cohort</b>	<b>63 411</b>	<b>100</b>	<b>267</b>
Father	35 716	56	23
Mother	51 426	81	244
<b>Both of the parents have received childbirth benefit</b>	<b>31 012</b>	<b>49</b>	<b>330</b>
Father - when both of the parents have received benefit	31 012	49	38
Mother - when both of the parents have received benefit	31 012	49	292
Child - when both of the parents have received benefit	31 012	49	310
<b>Only one of then parents has received childbirth benefit</b>	<b>•</b>	<b>•</b>	<b>•</b>
Father - when only the father has received benefit	4 704	7	56
Mother - when only the mother has received benefit	20 414	32	314
Neither of the parents has received childbirth benefit	7 281	11	•

**Table 146** Child care. 2010

October	Number by age group						Number per 100 in the respective age groups				
	0-2 years	3-5 years	6-9 years	10-13 years	14 years	Total	0-2 years	3-5 years	6-9 years	10-13 years	Total years 0-13 years
<b>Total</b>	<b>131 177</b>	<b>191 916</b>	<b>226 379</b>	<b>90 513</b>	<b>16 569</b>	<b>656 554</b>	<b>67.5</b>	<b>97.4</b>	<b>86.1</b>	<b>33.2</b>	<b>69.0</b>
Day-care	59 732	626	..	..	..	60 358	30.7	0.3	..	..	6.5
Nurseries	11 656	100	..	..	..	11 756	6.0	0.1	..	..	1.3
Kindergartens	4 006	76 927	1 160	1	..	82 094	2.1	39.0	0.4	..	8.9
Age-integrated institutions	55 641	101 344	10 879	2 009	284	170 157	28.6	51.4	4.1	0.7	18.3
Outside school-hours care	86	11 905	191 924	29 155	1 596	234 666	..	6.0	73.0	10.7	25.1
Recreation centres	..	798	15 357	962	132	17 249	..	0.4	5.8	0.4	1.8
Full-day school	..	54	1 468	1 492	736	3 750	..	..	0.6	0.5	0.3
Clubs for children and juveniles	..	43	5 583	56 888	13 818	76 332	..	..	2.1	20.9	6.7
Playgroups	56	119	8	6	3	192	..	0.1	..	..	..

[www.statbank.dk/pas11](http://www.statbank.dk/pas11) and folk1

**Table 147** Rates of child care

	2009	2010	2011
	DKK per year		
Municipal day-care (0-2 years)	25 008	26 321	26 920
Nurseries	24 414	25 730	25 146
Municipal day-care (3-5 years)	33 551	35 344	32 564
Kindergartens (3-5 years)	17 625	19 127	17 863
Age-integrated institutions (0-2 years)	33 440	36 221	32 812
Age-integrated institutions (3-5 years)	18 591	20 997	18 704
Age-integrated institutions (6-9 years)	13 132	13 318	13 025
Recreation centres (6-9 years)	17 340	18 180	18 459
Recreation centres (10-13 years)	9 753	10 323	10 519
Clubs for juveniles (14-18 years)	13 081	13 128	13 134
School-care schemes (6-9 years)	5 210	5 311	5 362
School-care schemes (10-13 years)	1 109	1 133	1 226

[www.statbank.dk/res88](http://www.statbank.dk/res88)



**Table 148** Measures for elderly people. 2011

	Number by age group					Number per 100 persons in the respective age groups				
	Under 67 years	67-79 years	80-89 years	90 years +	Total	Under 67 years <sup>1</sup>	67-79 years	80-89 years	90 years +	Total
<b>Total</b>	<b>14 087</b>	<b>20 482</b>	<b>31 628</b>	<b>16 080</b>	<b>82 277</b>	<b>0.9</b>	<b>3.6</b>	<b>16.7</b>	<b>41.6</b>	<b>3.4</b>
Nursing homes	502	1 557	3 076	2 034	7 169	..	0.3	1.6	5.3	0.3
Protected dwellings	204	337	510	373	1 424	..	0.1	0.3	1.0	0.1
Nursing dwellings mainly for elderly persons	2 582	7 770	15 319	9 039	34 710	0.2	1.4	8.1	23.4	1.4
Nursing dwellings mainly for persons with mental/physical handicaps	3 236	243	121	63	3 663	0.2	..	0.1	0.2	0.2
General dwellings for elderly persons	6 551	10 342	12 389	4 417	33 699	0.4	1.8	6.5	11.4	1.4
General dwellings mainly for persons with mental/physical handicaps	968	143	70	16	1 197	0.1	..	..	..	..
Private nursing homes/private dwellings	44	90	143	138	415	..	..	0.1	0.4	..

<sup>1</sup> Calculated for the 45-66 year age group.

www.statbank.dk/resi01 and folk1

**Table 149** Recipients of permanent home help. 2010

	Recipients					Recipients per 100 in the respective age groups				
	Under 67 years	67-79 years	80-89 years	90 years +	Total	Under 67 years <sup>1</sup>	67-79 years	80-89 years	90 years +	Total
<b>Total</b>	<b>35 317</b>	<b>58 413</b>	<b>87 334</b>	<b>34 568</b>	<b>215 632</b>	<b>2.2</b>	<b>10.4</b>	<b>45.9</b>	<b>90.1</b>	<b>8.9</b>
Under 2 hours	21 529	33 421	44 532	10 824	110 307	1.3	6.0	23.4	28.2	4.5
2- 3.9 hours	3 875	6 147	9 473	3 582	23 077	0.2	1.1	5.0	9.3	1.0
4- 7.9 hours	3 355	5 833	9 551	4 400	23 138	0.2	1.0	5.0	11.5	1.0
8-11.9 hours	1 629	3 160	5 664	3 320	13 772	0.1	0.6	3.0	8.7	0.6
12-19.9 hours	2 095	5 515	10 726	8 294	26 629	0.1	1.0	5.6	21.6	1.1
20 hours +	2 834	4 338	7 388	4 149	18 708	0.2	0.8	3.9	10.8	0.8

<sup>1</sup> Calculated for 45-66 age group.

www.statbank.dk/aed05, aed06 and folk1

**Table 150** Persons receiving cash benefits under the Social Assistance Act, 2010

	Age of recipient					Family type			Total persons incl. not known
	Under 18 years	18-24 years	25-39 years	40-67 years	68 years +	Married couples	Other	Of whom single women with children	
	number of persons								
<b>Recipients of cash benefits, total<sup>1</sup></b>	<b>327</b>	<b>58 693</b>	<b>86 218</b>	<b>88 321</b>	<b>1 144</b>	<b>49 914</b>	<b>182 355</b>	<b>43 188</b>	<b>234 707</b>
<b>Maintenance benefits, total</b>	<b>285</b>	<b>50 297</b>	<b>64 712</b>	<b>56 032</b>	<b>1 117</b>	<b>25 841</b>	<b>144 561</b>	<b>34 073</b>	<b>172 443</b>
Maintenance benefits for breadwinners, initial assistance, married/cohabiting couples aged 25 yrs.	132	7 787	37 122	28 542	45	15 348	57 619	30 222	73 628
Maintenance benefits for non-breadwinners and initial assistance for single persons aged 25 years	8	5 319	28 394	28 672	80	4 500	56 961	4 316	62 473
Maint. benefits/initial assistance, young people	42	42 762	3 387	347	-	6 284	39 875	2 875	46 538
Maintenance benefits, persons without social pension	-	-	-	103	1 020	387	652	2	1 123
Special assistance for recipients of maintenance benefits and initial assistance	1	482	8 426	12 900	17	1 336	20 199	2 070	21 826
<b>Rehabilitation, etc.,total</b>	<b>-</b>	<b>1 790</b>	<b>10 625</b>	<b>8 570</b>	<b>•</b>	<b>7 636</b>	<b>13 253</b>	<b>3 968</b>	<b>20 985</b>
Rehabilitation benefits	-	1 008	7 709	4 773	•	4 760	8 682	2 712	13 490
Rehabilitation connected to enterprise-rehabilitation	-	273	2 520	3 010	•	2 223	3 541	1 058	5 803
Supplementary benefits during rehabilitation	-	999	4 620	4 027	•	3 768	5 844	1 803	9 646
Wage supplement connected to enterprise-rehabilitation	-	52	197	168	•	205	211	53	417
<b>Activated recipients of cash benefits, total</b>	<b>48</b>	<b>42 895</b>	<b>48 809</b>	<b>38 601</b>	<b>2</b>	<b>17 289</b>	<b>111 953</b>	<b>25 256</b>	<b>130 355</b>
Cash benefits during guidance and upgrading activities and business in-service training	42	39 959	46 862	36 996	-	15 954	106 841	24 297	123 859
Specific support for activated recipients of cash benefits and initial assistance	0	415	5 951	8 376	1	553	14 031	1 244	14 743
Activation allowance	19	19 922	24 248	18 552	-	7 976	54 280	12 135	62 741
Wage subsidies for persons in training, chapter 12	1	414	1 234	937	-	396	2 177	357	2 586
Cash bene./initial assistance during pre-habitation	1	2 493	1 242	676	-	769	3 633	700	4 412
<b>Introductory benefits, total</b>	<b>47</b>	<b>956</b>	<b>2 268</b>	<b>889</b>	<b>35</b>	<b>1 863</b>	<b>2 274</b>	<b>371</b>	<b>4 199</b>
Introductory benefits	38	924	2 191	861	30	1 794	2 203	358	4 048
Assistance in specific cases for foreigners	35	743	1 608	644	21	1 242	1 772	263	3 055
<b>Benefits connected to flexible jobs</b>	<b>•</b>	<b>318</b>	<b>5 962</b>	<b>21 050</b>	<b>•</b>	<b>13 139</b>	<b>14 082</b>	<b>3 414</b>	<b>27 330</b>
Benefits between flex jobs	•	119	2 484	8 904	•	5 342	6 131	1 364	11 507
Benefits during visitation period	•	110	1 953	6 467	•	4 194	4 294	1 075	8 530
Benefits during activation	•	146	2 622	8 727	•	5 507	5 966	1 487	11 495
Benefits during holidays	•	117	2 033	6 745	•	4 774	4 110	1 207	8 895
Benefits during sickness/maternity	•	15	386	1 109	•	724	777	236	1 510
Specific benefits for persons who are not entitled to benefits	•	5	99	299	•	272	129	31	403
<b>Specific benefits, total</b>	<b>31 032</b>	<b>13 455</b>	<b>25 549</b>	<b>32 417</b>	<b>448</b>	<b>39 111</b>	<b>62 733</b>	<b>18 373</b>	<b>102 907</b>
Assistance for expenses in connection with parents' visiting rights, etc.	191	112	556	690	4	199	1 343	191	1 553
Assistance for medical treatment, etc.	230	3 634	5 806	8 354	264	2 648	15 432	3 730	18 289
Assistance for individual expenses and removal	76	7 065	10 671	9 554	85	1 865	25 128	6 453	27 452
Benefits for children with reduced abilities	29 906	1 694	366	525	28	18 659	13 660	4 365	32 523
Assistance for adults with reduced abilities	127	2 240	3 104	6 650	86	5 308	6 717	1 100	12 207
Lost income due to care of children with reduced abilities	2 951	153	6 728	8 781	1	12 519	6 011	4 067	18 615
Assistance for surviving dependants	-	-	13	221	12	1	240	29	246
Current assistance for specific person groups – (sec. 29 of the act on active social policies)	-	232	600	314	-	80	1 055	11	1 147
Assistance for aids, etc. for activated persons	1	43	135	249	3	147	283	45	431

Note: Types of assistance, which are only received by a low number of people, are not shown, but are included in the totals.

www.statbank.dk/kont3

<sup>1</sup> Excl. assistance in specific cases.

Table 151 Recipients of cash benefits. 2010

	Number of recipients	Number of all-year recipients	Average number of months receiving assistance per recipient	Average benefits paid per month	Benefit paid out, total
	persons		months	DKK	DKK mio.
<b>Recipients of cash benefits, total</b>	<b>234 707</b>	<b>151 333</b>	<b>7.7</b>	<b>11 084</b>	<b>20 129</b>
<b>Maintenance assistance, total</b>	<b>172 443</b>	<b>74 004</b>	<b>5.1</b>	<b>10 173</b>	<b>9 034</b>
Maintenance assistance for breadwinners, initial assistance, married and cohabiting couples aged 25 years	73 628	35 347	5.8	12 018	5 098
Maintenance for non-breadwinners and initial assistance for single persons aged 25 years	62 473	26 571	5.1	9 284	2 960
Maintenance and initial assistance for young people	46 538	10 664	2.7	5 346	684
<b>Rehabilitation, etc., total</b>	<b>20 985</b>	<b>13 187</b>	<b>7.5</b>	<b>15 287</b>	<b>2 419</b>
<b>Activated recipients of cash benefits, total</b>	<b>130 355</b>	<b>52 542</b>	<b>4.8</b>	<b>9 392</b>	<b>5 922</b>
<b>Introductory benefits, total</b>	<b>4 199</b>	<b>2 748</b>	<b>7.9</b>	<b>7 463</b>	<b>246</b>
<b>Benefits connected to flexible jobs, total</b>	<b>27 330</b>	<b>14 473</b>	<b>6.4</b>	<b>14 446</b>	<b>2 509</b>

[www.statbank.dk/kont3](http://www.statbank.dk/kont3)

Table 152 Rent subsidies

	Number of households receiving rent subsidy		Rent subsidies paid		Rent subsidy paid per household	
	2010	2011	2010	2011	2010	2011
December	number		DKK thousands		DKK	
<b>Rent subsidies, total</b>	<b>537 190</b>	<b>540 921</b>	<b>1 041 590</b>	<b>1 073 102</b>	<b>1 939</b>	<b>1 984</b>
<b>Rent subsidies to non-pensioners</b>	<b>203 467</b>	<b>207 978</b>	<b>239 114</b>	<b>246 955</b>	<b>1 175</b>	<b>1 187</b>
Ordinary	203 115	207 722	238 765	246 705	1 176	1 188
Re-housing / improvements	254	150	223	118	878	787
Collective housing	98	106	126	132	1 286	1 245
<b>Rent subsidies to pensioners</b>	<b>299 041</b>	<b>294 765</b>	<b>749 476</b>	<b>766 403</b>	<b>2 506</b>	<b>2 600</b>
Tenants, total	277 251	274 699	721 780	739 996	2 603	2 694
Ordinary flats	218 929	216 782	514 156	526 278	2 349	2 428
Old peoples' housing	58 322	57 917	207 624	213 718	3 560	3 690
Owner-occupiers	872	828	1 363	1 345	1 563	1 624
Occupants in flats jointly owned by the occupants	20 422	18 808	25 209	24 055	1 234	1 279
Collective housing	496	430	1 124	1 007	2 266	2 342
<b>Rent subsidy to new early retirement pensioners<sup>1</sup></b>	<b>34 682</b>	<b>38 178</b>	<b>53 000</b>	<b>59 744</b>	<b>1 528</b>	<b>1 565</b>

<sup>1</sup> Rent subsidy to early retirement pensioners and persons with serious physical handicap, who are new recipients of rent subsidy after the early retirement pension reform as of January 2003.

[www.statbank.dk/05](http://www.statbank.dk/05)

**Table 153** Benefit during sickness or in connection with childbirth. 2011

	Expenditure, total <sup>1</sup>	Days in which benefits were received	Men	Women	Total
Total	24 645	52 224	240 696	325 195	565 891
Sickness, total	14 712	30 159	192 642	232 122	424 764
Employees, total	13 951	28 360	175 441	222 823	398 264
The first 21 days <sup>3</sup>	1 740	2 912	108 706	119 907	228 613
After 21 days	12 211	25 448	102 753	144 288	247 041
Self-employed, total	761	1 799	17 578	9 612	27 190
The first two weeks <sup>4</sup>	167	327	13 175	7 362	20 537
After two weeks	594	1 472	11 398	5 244	16 642
Pregnancy, birth or adoption, total	9 933	22 065	53 793	105 843	159 636
Pregnancy	1 416	3 975	•	56 817	56 817
Birth, adoption	8 517	18 090	53 793	100 160	153 953

<sup>1</sup> Includes all payments in the year, i.e. both closed cases and cases in progress at the end of the year.

[www.statbank.dk/socdag1](http://www.statbank.dk/socdag1)

<sup>2</sup> The number of persons is calculated net, i.e. a person transferring from one type of absence to another within a group is only counted once. Persons, who have received sick-day and birth benefits, are counted twice. <sup>3</sup> Cases where the public sector has taken over the obligations of the employer to pay sickness benefit. In other cases the employer must pay sickness benefit (the employer period) for the first 21 days. <sup>4</sup> Especially self-employed with a voluntary insurance.

**Table 154** Recipients of old age pensions. 2011

1 January	Basic payment			Total
	Full amount	Reduced amount	No amount <sup>1</sup>	
	number of persons			
<b>Total</b>	<b>894 820</b>	<b>57 817</b>	<b>791</b>	<b>953 428</b>
65-69 years	293 504	25 640	409	319 553
70-79 years	376 399	23 736	313	400 448
80-89 years	187 201	7 742	55	194 998
90 years +	37 716	699	14	38 429
<b>Men, total</b>	<b>394 026</b>	<b>29 886</b>	<b>644</b>	<b>424 556</b>
65-69 years	139 704	13 791	340	153 835
70-79 years	173 231	12 493	258	185 982
80-89 years	71 506	3 379	36	74 921
90 years +	9 585	223	10	9 818
<b>Women, total</b>	<b>500 794</b>	<b>27 931</b>	<b>147</b>	<b>528 872</b>
65-69 years	153 800	11 849	69	165 718
70-79 years	203 168	11 243	55	214 466
80-89 years	115 695	4 363	19	120 077
90 years +	28 131	476	4	28 611

Note: The table includes pensioners, who live abroad, but not persons who have chosen to defer the old age pension.

[www.statbank.dk/pen11](http://www.statbank.dk/pen11), [pen22](http://www.statbank.dk/pen22) and [pen33](http://www.statbank.dk/pen33)

<sup>1</sup> The pensioner's earned income is too high to be entitled to claim the basic payment.

**Table 155** Recipients of early retirement pensions. 2011

1 January	Early retirement pensions				Total
	Highest	Intermediate	Ordinary/ increased	New early retirement	
	number of recipients				
<b>Recipients, total</b>	<b>49 664</b>	<b>59 386</b>	<b>24 984</b>	<b>111 532</b>	<b>245 566</b>
18-29 years	1 287	408	6	9 981	11 682
30-39 years	6 224	3 815	653	13 682	24 374
40-49 years	12 489	11 317	3 855	28 230	55 891
50-59 years	18 219	23 830	10 947	39 558	92 554
60-64 years	11 445	20 016	9 523	20 081	61 065
<b>Men, total</b>	<b>25 486</b>	<b>25 515</b>	<b>10 043</b>	<b>50 919</b>	<b>111 963</b>
18-29 years	738	246	3	5 633	6 620
30-39 years	3 545	2 081	356	6 395	12 377
40-49 years	6 768	5 377	1 882	12 257	26 284
50-59 years	8 985	9 884	4 562	17 378	40 809
60-64 years	5 450	7 927	3 240	9 256	25 873
<b>Women, total</b>	<b>24 178</b>	<b>33 871</b>	<b>14 941</b>	<b>60 613</b>	<b>133 603</b>
18-29 years	549	162	3	4 348	5 062
30-39 years	2 679	1 734	297	7 287	11 997
40-49 years	5 721	5 940	1 973	15 973	29 607
50-59 years	9 234	13 946	6 385	22 180	51 745
60-64 years	5 995	12 089	6 283	10 825	35 192

[www.statbank.dk/pen11](http://www.statbank.dk/pen11)

**Table 156** Petitions for early retirement pensions. 2010

	Petitions, total	Awarded	Suspended	Maintained	Not stated <sup>1</sup>	Petition rejected	
						Total	In per cent of petitions
	number of persons					per cent	
<b>Total</b>	<b>19 250</b>	<b>17 152</b>	<b>5</b>	<b>193</b>	<b>181</b>	<b>1 719</b>	<b>8.9</b>
<b>Men, total</b>	<b>9 051</b>	<b>8 146</b>	<b>2</b>	<b>73</b>	<b>84</b>	<b>746</b>	<b>8.2</b>
Under 20 years	428	416	-	-	2	10	2.3
20-29 years	848	764	-	15	8	61	7.2
30-39 years	1 312	1 147	1	9	13	142	10.8
40-49 years	2 357	2 077	-	28	20	232	9.8
50-59 years	3 236	2 955	-	19	33	229	7.1
60-64 years	869	787	1	2	7	72	8.3
Not stated	1	-	-	-	1	-	-
<b>Women, total</b>	<b>10 199</b>	<b>9 006</b>	<b>3</b>	<b>120</b>	<b>97</b>	<b>973</b>	<b>9.5</b>
Under 20 years	287	278	-	-	3	6	2.1
20-29 years	692	608	-	9	10	65	9.4
30-39 years	1 750	1 454	1	39	20	236	13.5
40-49 years	3 058	2 664	1	39	33	321	10.5
50-59 years	3 666	3 311	1	33	25	296	8.1
60-64 years	745	691	-	-	5	49	6.6
Not stated	1	-	-	-	1	-	-

Note: The statistics contains only municipal decisions.

<sup>1</sup> Includes petitioners with or without a pension, where the decision is not stated, as well as petitioners whose pension status is not stated.

Source: National Social Appeals Board

[www.statbank.dk/pen11](http://www.statbank.dk/pen11), [pen22](http://www.statbank.dk/pen22) and [pen33](http://www.statbank.dk/pen33)

**Table 157** Payments of old age pensions and early retirement pensions. 2011

	Recipients					Amounts paid total	Average monthly amount paid per recipient				
	Old age pension	Highest/intermediate early retirement pension	Ordinary/ordinary early retirement pension	New scheme for early retirement pension	Total		Old age pension	Highest/intermediate early retirement pension	Ordinary/ordinary early retirement pension	New scheme for early retirement pension	Total
January	number of recipients					DKK mio.	DKK				
<b>Total</b>	<b>953 428</b>	<b>109 050</b>	<b>24 984</b>	<b>111 532</b>	<b>1 198 994</b>	<b>12 621</b>	<b>9 644</b>	<b>13 967</b>	<b>12 154</b>	<b>14 205</b>	<b>10 514</b>
Men	424 556	51 001	10 043	50 919	536 519	5 514	9186	14460	12758	14542	10263
Women	528 872	58 049	14 941	60 613	662 475	7 107	10012	13533	11748	13921	10717
<b>By type of amount paid</b>											
Basic pension payment											
<b>Total</b>	<b>952 637</b>	<b>108 180</b>	<b>24 925</b>	<b>111 336</b>	<b>1 197 078</b>	<b>7 433</b>	<b>5 380</b>	<b>5 455</b>	<b>5 423</b>	<b>14 210</b>	<b>6 209</b>
Full	894 820	102 806	23 280	72 626	1 093 532	6 808	5 552	5 552	5 552	15 699	6 226
Reduced	57 817	5 374	1 645	38 710	103 546	625	2 719	3 603	3 595	11 418	6 031
No payment	791	870	59	196	1 916	-	-	-	-	-	-
Pension supplement for single persons:											
<b>Total</b>	<b>399 649</b>	<b>69 629</b>	<b>15 619</b>	<b>-</b>	<b>484 897</b>	<b>2 444</b>	<b>4 955</b>	<b>5 444</b>	<b>5 424</b>	<b>-</b>	<b>5 040</b>
Full	265 232	59 801	13 329	-	338 362	1 951	5 766	5 766	5 766	-	5 766
Reduced	134 417	9 828	2 290	-	146 535	493	3 354	3 487	3 434	-	3 364
No payment	23 607	696	93	-	24 396	-	-	-	-	-	-
Pension supplements for others:											
<b>Total</b>	<b>416 210</b>	<b>27 304</b>	<b>7 392</b>	<b>-</b>	<b>450 906</b>	<b>1 041</b>	<b>2 307</b>	<b>2 312</b>	<b>2 401</b>	<b>-</b>	<b>2 309</b>
Full	256 280	17 121	4 957	-	278 358	776	2 787	2 787	2 787	-	2 787
Reduced	159 930	10 183	2 435	-	172 548	265	1 539	1 514	1 615	-	1 538
No payment	113 953	11 411	1 877	-	127 241	-	-	-	-	-	-
Married couple's supplement	18	18	1	-	37	-	722	722	1 000	-	730
Assistance or nursing supplement	2 312	4 374	5	-	6 691	24	3 196	3 531	3 600	-	3 415
Disability supplement	1	-	-	-	1	-	1 000	-	-	-	1 000
Temporary supplement	9 611	-	-	-	9 611	7	761	-	-	-	761
Disability amount	12 437	109 047	-	-	121 484	325	2 667	2 673	-	-	2 672
Work incapacity amount	3 914	49 662	-	-	53 576	198	3 691	3 699	-	-	3 699
Early retirement amount	4 581	-	24 977	-	29 558	41	1 366	-	1 382	-	1 379
Extra supplement benefit	-	-	24 980	-	24 980	32	-	-	1 260	-	1 260

Note: The table includes pensioners, who live abroad, but not persons who have chosen to defer the old age pension.

www.statbank.dk/pen11, pen22 and pen33

**Table 158 Pension from Labour Market Supplementary Pension Scheme**

	2010	2011
	DKK mio.	
<b>Benefits</b>	<b>9 256</b>	<b>10 190</b>
	number of pensioners	
<b>With own pension, total</b>	<b>811 400</b>	<b>856 800</b>
Men	397 500	418 700
Annual pension under DKK 2.000	7 500	7 100
DKK 2.000-3.999	20 500	20 200
DKK 4.000 +	369 500	391 400
Women	413 900	438 200
Annual pension under DKK 2.000	17 800	16 800
DKK 2.000-3.999	51 600	49 800
DKK 4.000 +	344 500	371 600
<b>With spouse's pension, total</b>	<b>11 900</b>	<b>10 400</b>
Men	100	100
Women	11 800	10 500

Source: Labour Market Supplementary Pension Scheme

[www.statbank.dk/05](http://www.statbank.dk/05)**Table 159 Appeals in social cases. 2010**

	Cases decided. total	Dismissal/referral	Confirmation	Cancel-lation/change	Remission	Cases decided. total	Dismissal/referral	Confirmation	Cancel-lation/change	Remission
	number					per cent				
<b>The social appeals boards in:</b>										
<b>All Denmark</b>	<b>33 204</b>	<b>3 230</b>	<b>22 234</b>	<b>3 888</b>	<b>3 852</b>	<b>100.0</b>	<b>9.7</b>	<b>67.0</b>	<b>11.7</b>	<b>11.6</b>
State Administration for Greater Copenhagen	11 974	1 170	8 148	1 444	1 212	100.0	9.8	68.0	12.1	10.1
State Administration for Sjælland	5 616	644	3 712	612	648	100.0	11.5	66.1	10.9	11.5
State Administration for Syddanmark	7 358	530	5 178	880	770	100.0	7.2	70.4	12.0	10.5
State Administration for Midtjylland	5 586	634	3 368	620	964	100.0	11.3	60.3	11.1	17.3
State Administration for Nordjylland	2 670	252	1 828	332	258	100.0	9.4	68.5	12.4	9.7

Source: National Social Appeals Board since 1999

Table 160 Visits to physicians. 2010

	Men	Women	Total <sup>1</sup>	Men	Women	Total <sup>1</sup>	Men	Women	Total <sup>1</sup>
	thousand persons			thousand contacts			DKK mio.		
<b>Total</b>	<b>2 481</b>	<b>2 690</b>	<b>5 171</b>	<b>23 207</b>	<b>35 264</b>	<b>58 569</b>	<b>5 567</b>	<b>8 015</b>	<b>13 672</b>
<b>General medical care, total</b>	<b>2 247</b>	<b>2 575</b>	<b>4 822</b>	<b>16 136</b>	<b>24 578</b>	<b>40 793</b>	<b>2 981</b>	<b>4 295</b>	<b>7 297</b>
General medical care, consultation, daytime <sup>2</sup>	2 002	2 366	4 368	7 888	11 183	19 113	1 020	1 446	2 471
General medical care, consultation, evening	300	337	637	413	464	885	82	92	176
General medical care, visit, daytime <sup>2</sup>	57	94	151	159	267	426	35	57	92
General medical care, visit, evening, etc.	89	110	199	135	163	299	38	46	85
General medical care, phone cons., daytime <sup>2</sup>	1 431	1 938	3 368	5 149	8 669	13 834	129	218	347
General medical care, phone cons., evening	408	534	942	674	923	1 603	67	91	159
General medical care, email consultation	283	513	796	769	1 495	2 266	39	75	114
General medical care, preventive, other ser.	545	728	1 273	948	1 414	2 367	770	1 114	1 896
General medical care, basic fee and doctor's practice fee <sup>3</sup>	•	•	•	•	•	•	801	1 155	1 956
<b>Special medical care, total</b>	<b>690</b>	<b>954</b>	<b>1 644</b>	<b>2 090</b>	<b>3 173</b>	<b>5 270</b>	<b>1 235</b>	<b>1 846</b>	<b>3 085</b>
Ear specialist	250	269	518	527	537	1 065	292	288	581
Eye specialist	240	342	582	430	632	1 063	232	352	584
Other special medical care	316	538	854	1 133	2 004	3 143	711	1 205	1 920
<b>Other services, total</b>	<b>1 286</b>	<b>1 516</b>	<b>2 802</b>	<b>4 989</b>	<b>7 524</b>	<b>12 522</b>	<b>1 350</b>	<b>1 874</b>	<b>3 289</b>
Dental care <sup>4</sup>	1 163	1 369	2 532	1 790	2 104	3 898	681	756	1 439
Chiropractic	163	171	334	877	1 093	1 973	50	61	111
Physiotherapy	160	278	438	2 202	3 995	6 199	417	657	1 074
Psychologist	19	53	72	100	309	409	48	147	195
Laboratories	...	...	...	•	•	•	138	234	434
Other services	4	5	9	20	23	43	10	11	22

Note: The table covers services provided in accordance with national health insurance, except for expenditure on pharmaceutical products and travel health insurances.

www.statbank.dk/syggk, sygks, sygp, sygps, sygu and sygus

<sup>1</sup> Including a small number (typically foreigners without a Danish civil registration number) without information on gender. <sup>2</sup> Monday to Friday 8.00 a.m. to 16.00 p.m. <sup>3</sup> Practice fee is estimated on the basis of the number of patients registered with each doctor's practice, irrespective of whether the medical services offered by the doctor are used. <sup>4</sup> Children and young people below 18 years are covered by the public children and youth dental-care system and are consequently excluded from this table.



<b>Table 161</b>		<b>Hospital activities. 2010</b>					
	Region Hovedstaden	Region Sjælland	Region Syddanmark	Region Midtjylland	Region Nordjylland	Total	
Number of hospitals	11	1	12	22	7	53	
Number of beds <sup>1</sup>	6 548	2 499	3 646	3 782	1 828	18 303	
Bed occupancy rate	92	90	87	89	91	90	
<b>Public general hospitals</b>							
Average bed days	3.4	2.8	3.2	3.2	3.9	3.3	
Inpatients	449 366	209 924	254 125	276 211	117 057	1 306 683	
Outpatients	2 307 866	806 814	1 676 379	1 464 229	554 635	6 809 923	
<b>Public psychiatric hospitals</b>							
Inpatients	19 151	6 923	8 909	9 487	2 949	47 419	
Outpatients <sup>2</sup>	244 638	73 767	145 342	122 281	44 440	630 468	
<b>Operated persons</b>							
<b>Total</b>	<b>223 079</b>	<b>82 350</b>	<b>178 734</b>	<b>174 977</b>	<b>72 898</b>	<b>730 868</b>	
In public hospitals							
As inpatients	107 218	39 242	71 800	71 126	31 840	320 730	
As outpatients	80 191	39 484	76 581	79 762	30 240	305 608	
In emergency departments	6 038	5	18 319	11 457	5 487	41 211	
In private hospitals	29 632	3 619	12 034	12 632	5 331	63 319	

<sup>1</sup> Prescribed per 31 December 2009. <sup>2</sup> Excl. home visits.

Source: National Board of Health  
(The National Register of Patients)

[www.sst.dk](http://www.sst.dk)

**Table 162 Hospitalizations at general hospitals. 2010**

	Men	Women	Total
	number of persons		
<b>Total, net<sup>1</sup></b>	<b>276 725</b>	<b>367 963</b>	<b>644 688</b>
Patients with no symptoms or diseases	12 989	20 314	33 303
Infectious and parasitic diseases	16 020	14 923	30 943
Malignant neoplasm	23 400	28 909	52 309
Nutritional and metabolic diseases	12 293	16 459	28 752
Diseases of blood and blood-forming organs	5 136	6 019	11 155
Mental disorders	6 876	5 357	12 233
Diseases of the nervous system and sensory organs	15 816	15 473	31 289
Diseases of the circulatory system	48 559	38 173	86 732
Diseases of the respiratory system	35 485	33 389	68 874
Diseases of the digestive system	33 917	35 135	69 052
Diseases of the genito-urinary system	18 224	30 653	48 877
Deliveries and complications of pregnancy and childbirth	•	72 359	72 359
Diseases of the skin and subcutaneous tissue	7 337	5 943	13 280
Diseases of musculoskeletal system and connective tissue	23 313	29 163	52 476
Congenital anomalies	3 632	2 676	6 308
Certain conditions originating in the perinatal period	289	256	545
Symptoms, signs and ill-defined conditions	74 492	84 125	158 617
Injury and poisoning	44 607	47 236	91 843

Note: Diagnoses (the S-list). The table only includes persons who were in the population as at 1.1.2010. I.e. persons who were born or immigrated during the year have not been included.

www.statbank.dk/pa11a

<sup>1</sup> The figure is less than the sum of the sub categories as the same person can have been admitted with more than one diagnosis.

**Table 163 Hospitalizations at general hospitals by age and sex. 2010**

	Men			Women			Total		
	Hospita- lizations	Number of persons hospitalized	Per cent of population	Hospita- lizations	Number of persons hospitalized	Per cent of population	Hospita- lizations	Number of persons hospitalized	Per cent of population
	number		per cent	number		per cent	number		per cent
<b>Total</b>	<b>547 645</b>	<b>276 725</b>	<b>10.1</b>	<b>649 561</b>	<b>367 963</b>	<b>13.2</b>	<b>1 197 206</b>	<b>644 688</b>	<b>11.6</b>
1- 4 years	32 212	19 355	14.5	23 888	14 711	11.6	56 100	34 066	13.1
5-14 years	27 813	18 011	5.3	24 531	15 280	4.7	52 344	33 291	5.0
15-24 years	29 238	19 755	5.6	46 728	30 846	9.2	75 966	50 601	7.4
25-34 years	25 990	17 054	5.2	90 898	64 499	19.9	116 888	81 553	12.5
35-44 years	41 038	24 751	6.2	71 629	47 262	12.0	112 667	72 013	9.1
45-54 years	62 026	33 226	8.4	62 642	36 409	9.4	124 668	69 635	8.9
55-64 years	93 466	44 393	12.4	81 023	42 001	11.6	174 489	86 394	12.0
65-74 years	113 770	49 365	18.4	95 826	46 584	16.4	209 596	95 949	17.4
75-84 years	86 065	35 445	27.7	89 639	41 458	24.8	175 704	76 903	26.1
85 years +	36 027	15 370	37.4	62 757	28 913	32.5	98 784	44 283	34.0

Note: The table only includes persons who were in the population as at 1.1.2010, i.e. persons who were born or immigrated during the year have not been included.

www.statbank.dk/pa11 and ud11

**Table 164** Bed-days. 2010

	Men		Women		Total	
	Number of bed-days	Average number of bed-days	Number of bed-days	Average number of bed-days	Number of bed-days	Average number of bed-days
<b>Total</b>	<b>2 018 857</b>	<b>7.3</b>	<b>2 261 664</b>	<b>6.1</b>	<b>4 280 521</b>	<b>6.6</b>
1- 4 years	62 496	3.2	48 020	3.3	110 516	3.2
5-14 years	52 765	2.9	48 402	3.2	101 167	3.0
15-24 years	68 577	3.5	98 098	3.2	166 675	3.3
25-34 years	67 045	3.9	222 015	3.4	289 060	3.5
35-44 years	113 123	4.6	180 134	3.8	293 257	4.1
45-54 years	209 994	6.3	185 874	5.1	395 868	5.7
55-64 years	364 312	8.2	290 420	6.9	654 732	7.6
65-74 years	492 889	10.0	405 922	8.7	898 811	9.4
75-84 years	410 138	11.6	448 974	10.8	859 112	11.2
85 years +	177 518	11.5	333 805	11.5	511 323	11.5

Note: The table only includes persons who were in the population as at 1.1.2010, i.e. persons who were born or immigrated during the year have not been included.

[www.statbank.dk/ud33](http://www.statbank.dk/ud33)

**Table 165** Hospitalization rate by education<sup>1</sup>. 2010

	Basic school or unknown <sup>2</sup>	Upper secondary education	Vocational education and training <sup>3</sup>	Short cycle higher education	Medium-cycle higher education	Bachelor	Long-cycle higher education	Total
	men							
<b>Total</b>	<b>132</b>	<b>86</b>	<b>100</b>	<b>83</b>	<b>78</b>	<b>67</b>	<b>65</b>	<b>100</b>
20-24 years	136	79	107	74	68	64	..	100
25-29 years	142	92	102	68	77	69	60	100
30-34 years	151	83	104	73	71	68	64	100
35-39 years	144	88	105	81	74	60	59	100
40-44 years	143	85	99	81	75	71	58	100
45-49 years	138	84	97	86	76	64	61	100
50-54 years	132	87	96	80	75	81	67	100
55-59 years	122	91	100	91	83	69	70	100
60-64 years	116	97	100	94	84	88	75	100
women								
<b>Total</b>	<b>132</b>	<b>88</b>	<b>102</b>	<b>82</b>	<b>86</b>	<b>65</b>	<b>67</b>	<b>100</b>
20-24 years	157	79	117	69	81	59	47	100
25-29 years	150	101	115	75	87	64	54	100
30-34 years	141	100	112	83	88	77	67	100
35-39 years	148	94	104	86	87	70	70	100
40-44 years	147	94	102	78	84	74	63	100
45-49 years	142	83	99	86	83	66	63	100
50-54 years	125	89	98	80	86	66	69	100
55-59 years	120	87	99	84	86	..	73	100
60-64 years	117	96	94	88	89	..	83	100

Note: Hospitalization rate is the percentage of a given group in the population who have been admitted to hospital. The rates above are given as index figures where the rate for everyone in the age group is set at 100. The total hospitalization rate is standardized by age, i.e. it has been corrected for the distribution by age being unequal for the different education groups. Hospitalization rates are therefore mutually comparable.

[www.statbank.dk/pa8](http://www.statbank.dk/pa8)

<sup>1</sup> Highest in progress or completed education as at 1.1.2010. <sup>2</sup> Incl. persons with unknown education and persons with 1st year basic vocational education, etc. <sup>3</sup> Basic vocational education, part 2, apprenticeships, etc.

**Table 166** Selected cancer types among new cancer cases. 2010

	0-14 years	15-29 years	30-44 years	45-59 years	60-74 years	75 years +	I alt
men							
<b>Total</b>	<b>91</b>	<b>226</b>	<b>664</b>	<b>2 801</b>	<b>8 735</b>	<b>5 470</b>	<b>17 987</b>
Head and neck	1	15	45	307	438	149	955
Colon and rectum	-	5	57	292	1 139	849	2 342
Lung, bronchi and windpipe	-	2	25	321	1 132	782	2 262
Birthmark cancer, skin	3	36	111	201	327	162	840
Other skin cancer <sup>1</sup>	-	2	17	52	327	482	880
Neck of the bladder	-	-	5	421	2 450	1 184	4 060
Testicle	-	66	108	53	10	1	238
Urinary system (neoplasm)	5	1	42	275	883	637	1 843
Brain and nervous system	18	43	95	189	289	114	748
Other	64	56	159	690	1 740	1 110	3 819
women							
<b>Total</b>	<b>73</b>	<b>249</b>	<b>1 208</b>	<b>3 920</b>	<b>7 063</b>	<b>5 063</b>	<b>17 576</b>
Head and neck	1	16	62	141	189	117	526
Colon and rectum	-	7	29	290	815	880	2 021
Lung, bronchi and windpipe	-	2	23	399	1 073	679	2 176
Birthmark cancer, skin	2	76	234	229	235	173	949
Other skin cancer <sup>1</sup>	-	2	8	46	186	329	571
Breast	-	20	375	1 601	2 122	929	5 047
Cervix (uteri)	-	30	136	84	61	46	357
Uterus and ovary	-	10	39	299	569	367	1 284
Urinary system (neoplasm)	5	2	23	106	346	271	753
Brain and nervous system	14	28	127	204	282	148	803
Other	51	56	152	521	1 185	1 124	3 089

Note: Cancer cases are classified in accordance with WHO's ICD10-diagnosis classification. The ICD7 classification was previously used.

Source: National Board of Health. Cancer Registry

[www.sst.dk](http://www.sst.dk)

<sup>1</sup> Excl. basal cell skin cancer.

**Table 167** Persons diagnosed with cancer<sup>1</sup> and still alive. 2010

31 December	0-14 years	15-29 years	30-44 years	45-59 years	60-74 years	75 years +	Total
men							
<b>Total, net<sup>1</sup></b>	<b>603</b>	<b>1 876</b>	<b>6 421</b>	<b>16 089</b>	<b>42 725</b>	<b>30 790</b>	<b>98 504</b>
Head and neck	8	58	263	1 527	2 987	1 619	6 462
Colon and rectum	-	21	200	1 420	5 987	5 780	13 408
Bronchi and lung	-	4	56	500	1 939	1 178	3 677
Birthmark cancer, skin	6	128	853	1 829	3 273	1 680	7 769
Other skin cancer <sup>2</sup>	2	8	93	417	2 098	3 627	6 245
Neck of the bladder	-	-	9	1 275	13 021	10 065	24 370
Testicle	11	349	2 261	3 101	1 598	359	7 679
Urinary system (neoplasm)	36	60	258	1 696	6 419	5 921	14 390
Brain and nervous system	123	451	954	1 482	1 940	726	5 676
Other	429	828	1 600	3 514	7 199	3 837	17 407
women							
<b>Total, net<sup>1</sup></b>	<b>477</b>	<b>1 712</b>	<b>8 536</b>	<b>28 018</b>	<b>55 264</b>	<b>42 172</b>	<b>136 179</b>
Head and neck	4	108	538	1 342	1 685	1 063	4 740
Colon and rectum	-	27	150	1 322	5 075	7 159	13 733
Bronchi and lung	-	8	57	695	2 118	1 144	4 022
Birthmark cancer, skin	7	318	1 982	3 111	4 141	2 562	12 121
Other skin cancer <sup>2</sup>	-	14	87	415	1 468	2 873	4 857
Breast	-	31	1 741	12 063	25 392	15 151	54 378
Cervix (uteri)	1	74	1 331	2 532	2 763	2 212	8 913
Uterus and ovary	5	56	299	1 998	5 947	6 221	14 526
Urinary system (neoplasm)	42	49	114	680	2 440	2 566	5 891
Brain and nervous system	115	389	1 100	2 028	2 835	1 547	8 014
Other	309	672	1 321	3 068	5 674	4 291	15 335

Note: Cancer cases are classified in accordance with WHO's ICD10-diagnosis classification. The ICD7 classification was previously used. Cancer in Denmark 1943-2009 includes some non-malignant tumours, for which notification is compulsory, mostly tumours in brains, membranes of the brain and urinary system.

Source: National Board of Health. Cancer Registry  
[www.sst.dk](http://www.sst.dk)

<sup>1</sup> The figure is less than the sum of the sub-categories as the same person can occur with more than one type of cancer. <sup>2</sup> Excl. basal cell skin cancer.

	1-14 year		15-19 years		20-24 years		25-29 years		30-39 years		40 + years		Total	
	Men	Women	Men	Women	Men	Women	Men	Women	Men	Women	Men	Women	Men	Women
	Chlamydia <sup>1</sup>	16	118	2 009	5 994	4 161	6 389	1 928	2 209	1 863	1 414	559	366	10 562 <sup>2</sup>
Non-natal syphilis	-	1	11	-	50	6	34	5	102	12	167	8	364	32
Gonorrhoea <sup>3</sup>	-	-	18	10	60	22	60	6	57	16	73	17	268	71

<sup>1</sup> In 2011, 45 cases were reported with unknown sex and/or age. These cases are not included in the table. <sup>2</sup> Including 26 cases for men and 24 cases for women under 1 year. Of which all 50 cases were reported in connection with eye tests. <sup>3</sup> For gonorrhoea, only cultivated cases, which can be proved, are reported. Furthermore, molecular-biological diagnostic is conducted by a few number of laboratories.

Source: National Serum Institute

	1990	1995	2000	2010	2011	1 alt <sup>1</sup>
<b>Men</b>						
Number of diagnosed cases, total	180	184	43	36	39	2 443
Of whom dead as at 31 December 2011 <sup>2</sup>	174	134	19	8	7	1 842
Total deaths during the year <sup>3</sup>	141	206	17	7	9	1 842
<b>Women</b>						
Number of diagnosed cases, total	17	29	18	10	17	435
Of whom dead as at 31 December 2011 <sup>2</sup>	17	24	4	1	2	216
Total deaths during the year <sup>3</sup>	7	31	6	1	-	216

<sup>1</sup> Total in the period 1980-2011. <sup>2</sup> Diagnosed in the period 1 January to 31 December the stated year and dead as at 31 December 2011. <sup>3</sup> Total deaths during the year regardless of the year of diagnosis.

Source: The national serum institute (Statens Serum Institut)

	1990	1995	2000	2010	2011	1 alt <sup>1</sup>
<b>Total</b>	<b>140</b>	<b>304</b>	<b>261</b>	<b>274</b>	<b>265</b>	<b>6 158</b>
<b>Men, total</b>	<b>110</b>	<b>224</b>	<b>164</b>	<b>201</b>	<b>191</b>	<b>4 468</b>
Homo/bisexual	80	116	73	113	113	2 475
Injecting drug users	9	20	15	10	6	314
Heterosexual	14	69	68	70	62	1 372
Blood transfusion	3	1	1	-	-	15
Perinatal	-	1	2	2	2	33
Other/not known	4	17	5	6	8	259
<b>Women, total</b>	<b>30</b>	<b>80</b>	<b>97</b>	<b>73</b>	<b>73</b>	<b>1 687</b>
Homo/bisexual	-	-	-	-	-	-
Injecting drug users	6	14	5	4	4	189
Heterosexual	22	58	79	67	67	1 364
Blood transfusion	-	3	4	-	-	23
Perinatal	1	2	4	1	1	55
Other/not known	1	3	5	1	1	56

<sup>1</sup> Total reported cases in the period 1.8.1990-31.12.2011.

Source: The national serum institute (Statens Serum Institut)

**Table 171** Reported occupational accidents. 2010

Industry group (DB07)	Total			Of which deaths		
	Men	Women	Total <sup>1</sup>	Men	Women	Total
<b>Total</b>	<b>25 464</b>	<b>18 809</b>	<b>44 382</b>	<b>36</b>	<b>3</b>	<b>39</b>
Agriculture, forestry and fishing	472	162	636	5	1	6
Mining and quarrying	46	4	50	-	-	-
Mfr. of food, beverages and tobacco	1 641	609	2 250	2	-	2
Mfr. of textiles and leather	71	38	109	-	-	-
Mfr. of wood and paper products, printing works	381	81	462	1	-	1
Oil refinery, etc.	6	-	6	-	-	-
Mfr. of chemicals products	156	42	198	-	-	-
Pharmaceutical industry	90	90	180	-	-	-
Mfr. of plastic, glass and concrete industry	593	130	723	-	-	-
Mfr. of metal products	1 015	104	1 120	1	-	1
Electronics industry	72	61	133	-	-	-
Mfr. of electric equipment	91	47	138	-	-	-
Machine industry	1 002	149	1 151	-	-	-
Means of transport industry	240	41	282	-	-	-
Mfr. of furniture; manufacturing, n.e.c.	421	82	505	1	-	1
Electricity and gas supply	162	15	177	-	-	-
Water supply and refuse disposal	595	40	635	2	-	2
Construction	4 376	135	4 522	8	-	8
Trade	2 737	1 355	4 098	5	-	5
Transport	3 304	1 076	4 426	5	-	5
Hotels and restaurants	337	459	797	-	-	-
Publishing, television and radio	60	50	110	-	-	-
Telecommunications	98	30	128	-	-	-
IT and information service	46	36	82	-	-	-
Finance and insurance	166	193	361	-	-	-
Real estate and renting	318	111	430	-	-	-
Counselling etc.	188	116	306	-	-	-
Research and development	48	50	98	-	-	-
Advertising and other business activity	79	85	164	-	-	-
Travel agency, cleaning, guard and other operational activity	1 297	722	2 021	2	1	3
Public administration, forces and police	1 712	2 029	3 745	1	1	2
Education	975	1 664	2 644	1	-	1
Human health activities	361	1 675	2 037	-	-	-
Social institutions, etc.	1 149	6 573	7 724	-	-	-
Culture and leisure	459	270	733	-	-	-
Other services	234	260	494	-	-	-
Private households with hired assistant	3	6	9	-	-	-
International organisations and embassy	1	-	2	-	-	-
Activity not stated	462	219	696	2	-	2

Note: Includes only occupational accidents reported to the Working Environment Service.

Source: Danish Working Environment Service

<sup>1</sup> Incl. persons with unknown sex.

Industry group (DB07)	Men	Women	Unknown sex	Total
<b>Total</b>	<b>7 387</b>	<b>7 844</b>	<b>21</b>	<b>15 252</b>
Agriculture, forestry and fishing	125	75	-	200
Mining and quarrying	33	4	-	37
Mfr. of food, beverages and tobacco	362	280	-	642
Mfr. of textiles and leather	17	26	-	43
Mfr. of wood and paper products, printing works	145	54	-	199
Oil refinery, etc.	2	1	-	3
Mfr. of chemicals products	38	21	-	59
Pharmaceutical industry	22	45	-	67
Mfr. of plastic, glass and concrete industry	138	68	-	206
Mfr. of metal products	270	58	-	328
Electronics industry	27	51	-	78
Mfr. of electric equipment	31	37	-	68
Machine industry	328	106	-	434
Means of transport industry	154	23	-	177
Mfr. of furniture; manufacturing, n.e.c.	169	78	-	247
Electricity and gas supply	57	12	-	69
Water supply and refuse disposal	66	13	-	79
Construction	952	95	1	1 048
Trade	597	567	3	1 167
Transport	408	211	3	622
Hotels and restaurants	95	194	-	289
Publishing, television and radio	23	21	-	44
Telecommunications	27	28	-	55
IT and information service	22	31	-	53
Finance and insurance	107	136	-	243
Real estate and renting	93	49	-	142
Counselling, etc.	47	76	2	125
Research and development	16	29	-	45
Advertising and other business activity	12	26	-	38
Travel agency, cleaning, guard and other operational activity	162	315	-	477
Public administration, forces and police	591	1 189	4	1 784
Education	146	465	-	611
Human health activities	68	729	-	797
Social institutions, etc.	111	1 214	-	1 325
Culture and leisure	54	65	-	119
Other services	85	355	-	440
Private households with hired assistant	1	3	-	4
Activity not stated	1 786	1 094	8	2 888

Note: Includes only occupational diseases reported to the Working Environment Service.

Source: Danish Working Environment Service

	Accidents at work	Occupational diseases	Damaged glasses	Sudden lifting injuries
<b>Reported cases</b>	<b>19 329</b>	<b>18 270</b>	<b>77</b>	<b>2</b>
<b>Decided cases, total<sup>1</sup></b>	<b>17 388</b>	<b>15 936</b>	<b>82</b>	<b>2</b>
Recognised cases	13 022	3 621	63	-
Dismissed cases	3 949	11 438	13	2
Shelved cases	417	877	6	-
<b>Compensation granted<sup>2</sup></b>	<b>5 363</b>	<b>2 375</b>	<b>-</b>	<b>-</b>

Note: Includes only industrial injuries reported to the National Board of Industrial Injuries.

Source: National Board of Industrial Injuries

<sup>1</sup> A case is not necessarily decided in the same year as it is reported. Therefore the number of reported and decided cases is not the same. <sup>2</sup> Approval of injury and compensation for loss of ability to work. Compensation is granted in cases which have previously been recognised, either in the year in question, or in previous years.



Table 174	Pharmacies	
	2009	2010
<b>Sales units, total<sup>1</sup></b>	<b>1 298</b>	<b>1 242</b>
Pharmacies	254	247
Pharmacy sub-branches	64	69
Pharmacy shops	128	126
OTC shops	637	596
Delivery facilities	215	204
<b>Staff, total</b>	<b>6 312</b>	<b>6 377</b>
Pharmacists	734	757
Pharmacoeconomicists	3 020	3 012
Other staff	2 558	2 608
	————— thousands units —————	
<b>Sales of prescription items</b>	<b>56 613</b>	<b>57 772</b>
To individuals	55 298	56 385
To hospitals	365	377
To veterinarians	950	1 010
	————— per thousand inhabitants —————	
Items	10 272	10 390
	————— per item in DKK —————	
Average price	166.6	167.4
	————— mio. DKK —————	
<b>Gross turnover</b>	<b>12 165</b>	<b>12 436</b>
Prescription sales	9 434	9 669
OTC sales	2 297	2 304
Others	434	463

<sup>1</sup> End of year.

Source: Danish Medicines Agency

Table 175 Consumption of drugs and medicines

ATC-group		2010		2011	
		DKK mio.	DDD per inhabitant in thousands per day	DKK mio.	DDD per inhabitant in thousands per day
	<b>Consumption of drugs</b>	<b>13 566.2</b>	<b>1 398.8</b>	<b>13 002.9</b>	<b>1 423.4</b>
A	Alimentary tract and metabolism	1 553.8	148.7	1 459.1	152.9
A02	Drugs for acid related disorders	383.2	57.3	219.9	60.7
A10	Drugs used in diabetes	642.7	46.9	714.5	48.7
B	Blood and blood-forming organs	437.8	113.3	407.0	114.5
C	Cardiovascular system	1 653.5	506.3	1 345.8	515.3
C03	Diuretics	230.9	106.3	228.0	100.6
C07	Beta-blocking agents	160.4	35.1	140.4	35.1
C08	Calcium channel blockers	135.5	78.4	118.7	82.5
C09	Agents acting on the renin-angiotensin system	539.6	159.5	271.7	164.0
C10	Lipid modifying agents	452.8	107.6	453.6	114.0
D	Dermatologicals	326.9	2.8	327.3	2.9
G	Genito urinary system and sex hormones	1 001.8	101.9	908.1	102.4
H	Systemic hormonal preparations excl. sex hormones and insulins	227.2	27.2	229.0	27.9
J	Antiinfectives for systemic use	1 027.6	18.0	1 009.2	18.6
J01	Antibacterials for systemic use	439.3	17.0	446.6	17.6
L	Antineoplastic and immunomodulating agents	131.5	4.3	120.3	4.5
L01	Autineoplastic agents	31.2	-	16.2	-
M	Musculo-skeletal system	501.2	70.1	524.5	72.8
N	Nervous system	4 301.1	265.4	4 259.1	269.1
N02	Analgesics	1 120.9	94.4	1 095.4	95.3
N05	Psycholeptics	1 026.6	43.4	1 035.7	42.8
N06	Antidepressants, psychoanaleptics and antidementia drugs	1 006.3	91.7	1 020.8	94.2
P	Antiparasitic products	80.7	1.3	79.6	1.4
R	Respiratory system	1 865.7	123.3	1 853.1	125.1
R03	Drugs for obstructive airway diseases	1 304.6	59.2	1 285.6	58.8
S	Sensory organs	316.6	16.1	318.4	16.1
V	Miscellaneous	54.7	-	58.3	0.1
-	Magisterial drugs etc.	86.3	-	104.1	-

Note: The table covers consumption of drugs and medicines in the primary health-care sector and is based on information from the medicine statistics register kept by the Danish Medicines Agency. The amount consumed is calculated as DDD (defined daily dose) per 1,000 inhabitants per day, i.e. the thousandth parts of the population who could be treated daily by the amount of medicine consumed if the DDD was consumed. Turnover is calculated at sales price for the pharmacy including VAT and prescription charges.

Source: Danish Medicines Agency

[www.laegemiddelstyrelsen.dk](http://www.laegemiddelstyrelsen.dk)

**Table 176** Reported offences and charges against the Penal Code

	Criminal offences reported		Criminal offences with charges		Charges as per cent of reported offences	
	2010	2011	2010	2011	2010	2011
<b>Penal Code, total</b>	<b>471 088</b>	<b>466 765</b>	<b>78 106</b>	<b>84 364</b>	<b>16.6</b>	<b>18.1</b>
<b>Sexual offences, total</b>	<b>2 642</b>	<b>2 606</b>	<b>1 938</b>	<b>1 831</b>	<b>73.4</b>	<b>70.3</b>
Incest etc.	75	51	73	48	97.3	94.1
Rape etc.	429	410	291	306	67.8	74.6
Heterosexual offences, children under 12	192	171	180	160	93.8	93.6
Heterosexual offences, other	294	250	271	224	92.2	89.6
Homosexual offences, children under 12	8	4	6	4	75.0	100.0
Homosexual offences, other	6	15	6	13	100.0	86.7
Offences against decency	1 443	1 476	932	865	64.6	58.6
Prostitution etc.	195	229	179	211	91.8	92.1
<b>Crimes of violence, total</b>	<b>18 131</b>	<b>17 834</b>	<b>13 790</b>	<b>13 836</b>	<b>76.1</b>	<b>77.6</b>
Assaulting public servant	2 814	2 843	2 356	2 441	83.7	85.9
Gathering with disturbance of public order	5	72	5	62	100.0	86.1
Homicide	49	49	44	43	89.8	87.8
Attempted homicide	152	148	120	124	78.9	83.8
Assault against private person	10 696	10 494	7 839	7 784	73.3	74.2
Common assault	8 940	8 793	6 363	6 372	71.2	72.5
Grievous assault	1 745	1 686	1 465	1 399	84.0	83.0
Particularly grievous assault	11	15	11	13	100.0	86.7
Homicide and bodily harm by negligence	27	23	26	23	96.3	100.0
Offences against life or body	407	374	339	310	83.3	82.9
Offences against personal liberty	306	286	246	239	80.4	83.6
Threats	3 675	3 545	2 815	2 810	76.6	79.3
<b>Offences against property, total</b>	<b>442 678</b>	<b>437 514</b>	<b>55 822</b>	<b>61 043</b>	<b>12.6</b>	<b>14.0</b>
Forgery	2 589	3 420	2 008	2 927	77.6	85.6
Arson	912	793	468	452	51.3	57.0
Burglary	96 683	91 732	6 688	7 035	6.9	7.7
Burglary in banks, shops	33 149	27 401	2 568	2 370	7.7	8.6
Burglary in dwellings	44 788	45 369	3 377	3 752	7.5	8.3
Burglary (uninhabited buildings)	18 746	18 962	743	913	4.0	4.8
Theft	189 848	192 736	27 569	29 342	14.5	15.2
Theft from cars, boats etc.	39 492	33 584	1 619	1 408	4.1	4.2
Theft from shops etc.	20 946	20 705	16 393	16 307	78.3	78.8
Other theft	129 410	138 447	9 557	11 627	7.4	8.4
Theft of motor vehicles	17 102	14 349	2 649	2 390	15.5	16.7
Theft of mopeds	3 643	3 026	331	312	9.1	10.3
Theft of bicycles	71 736	71 697	452	663	0.6	0.9
Theft of other objects	10 149	9 775	799	945	7.9	9.7
Larceny by finding	783	880	626	777	79.9	88.3
Embezzlement, fraud, breach of trust	10 600	13 067	6 564	8 456	61.9	64.7
Blackmail and usury	233	287	180	226	77.3	78.7
Fraud against creditors	172	169	118	95	68.6	56.2
Receiving stolen goods	1 834	1 985	1 793	1 943	97.8	97.9
Robbery	3 372	3 241	1 231	1 243	36.5	38.4
Serious fraudulent tax evasion etc.	271	285	167	128	61.6	44.9
Malicious damage	32 446	29 802	3 985	3 930	12.3	13.2
Misappropriation and offences against property	305	270	194	179	63.6	66.3
<b>Other offences, total</b>	<b>7 637</b>	<b>8 811</b>	<b>6 556</b>	<b>7 654</b>	<b>85.8</b>	<b>86.9</b>
Selling narcotics etc.	960	1 010	934	983	97.3	97.3
Smuggling narcotics	127	143	115	136	90.6	95.1
Homicide by negligence in road traffic	248	223	246	219	99.2	98.2
Other stipulations in Penal Code	6 302	7 435	5 261	6 316	83.5	84.9

www.statbank.dk/straf22

**Table 177** Reported criminal offences against special legislation. 2011

	Criminal offences reported		Criminal offences with charges		Charges as per cent of reported offences	
	2010	2011	2010	2011	2010	2011
<b>Offences, total</b>	<b>74 679</b>	<b>92 052</b>	<b>37 433</b>	<b>53 454</b>	<b>50.1</b>	<b>58.1</b>
Euphoriants Act	17 090	20 273	16 786	19 964	98.2	98.5
Aliens Act	5 575	6 387	555	421	10.0	6.6
Firearms Act	6 110	6 750	5 749	6 417	94.1	95.1
Income Tax And Fiscal Acts	1 778	1 827	187	301	10.5	16.5
Police regulations	11 150	14 358	1 037	7 002	9.3	48.8
Building and housing legislation	178	152	13	17	7.3	11.2
Health and social security legislation	2 336	2 407	898	999	38.4	41.5
Environmental legislation	2 881	2 761	671	720	23.3	26.1
Animals, hunting, etc. legislation	7 177	7 834	2 367	3 179	33.0	40.6
Employment, transport, legislation	7 662	11 370	3 282	5 567	42.8	49.0
Gambling, licensing, trade legislation	3 631	4 079	1 464	1 785	40.3	43.8
Other special legislation, excluding road traffic acts	9 111	13 854	4 424	7 082	48.6	51.1

Note: Excl. Traffic Act in that offences against the Traffic Act are only rarely reported.

[www.statbank.dk/straf22](http://www.statbank.dk/straf22)

**Table 178** Victims of criminal offences. 2011

	Men	Women	Sex, not stated	Total
<b>Total</b>	<b>28 802</b>	<b>42 955</b>	<b>2 049</b>	<b>73 806</b>
<b>Sexual offences</b>	<b>239</b>	<b>2 137</b>	<b>1</b>	<b>2 377</b>
Incest, etc.	11	42	-	53
Rape, etc.	6	400	-	406
Hetero or homosexual offences	89	340	-	429
Offences against decency	133	1 355	1	1 489
<b>Crimes of violence</b>	<b>10 452</b>	<b>6 633</b>	<b>1 276</b>	<b>18 361</b>
Assaulting, etc. public servant	815	771	1 181	2 767
Homicide	31	15	-	46
Attempted homicide	155	37	3	195
Assaulting private individual	7 316	3 864	15	11 195
Of which: Common assault	5 924	3 465	11	9 400
Grievous assault	1 385	393	4	1 782
Particularly grievous assault	7	6	-	13
Threats	1 839	1 714	39	3 592
<b>Offences against property</b>	<b>17 960</b>	<b>33 270</b>	<b>754</b>	<b>51 984</b>
Theft of handbags	2 312	7 662	200	10 174
Theft from pocket or handbag	13 176	23 925	487	37 588
Theft by trick in residences	303	1 034	5	1 342
Blackmail and usury	236	38	3	277
Robbery	1 891	603	58	2 552
<b>Other criminal offences</b>	<b>151</b>	<b>915</b>	<b>18</b>	<b>1 084</b>
Breach of caution given by the police	142	910	14	1 066
Slander, libel, defamation, insult	9	5	4	18

[www.statbank.dk/straf5](http://www.statbank.dk/straf5)

**Table 179** Victims of criminal offences by sex and age. 2011

	0-9 years	10-19 years	20-29 years	30-39 years	40-49 years	50-59 years	60-69 years	70-79 years	80 years +	Years, not stated	Total
<b>Victims, total</b>	<b>838</b>	<b>11 240</b>	<b>21 382</b>	<b>11 023</b>	<b>8 663</b>	<b>6 528</b>	<b>5 207</b>	<b>3 731</b>	<b>3 129</b>	<b>2 065</b>	<b>73 806</b>
Men	325	5 329	9 284	4 941	3 809	2 317	1 477	785	527	8	28 802
Women	513	5 911	12 098	6 082	4 854	4 211	3 730	2 946	2 602	8	42 955
Sex, not stated	-	-	-	-	-	-	-	-	-	2 049	2 049
<b>Sexual offences</b>	<b>353</b>	<b>1 197</b>	<b>381</b>	<b>172</b>	<b>115</b>	<b>63</b>	<b>59</b>	<b>21</b>	<b>12</b>	<b>4</b>	<b>2 377</b>
Men	62	132	10	11	16	4	3	-	-	1	239
Women	291	1 065	371	161	99	59	56	21	12	2	2 137
Sex, not stated	-	-	-	-	-	-	-	-	-	1	1
<b>Crimes of violence</b>	<b>397</b>	<b>3 743</b>	<b>4 934</b>	<b>3 203</b>	<b>2 701</b>	<b>1 475</b>	<b>488</b>	<b>108</b>	<b>24</b>	<b>1 288</b>	<b>18 361</b>
Men	222	2 467	3 157	1 800	1 553	823	328	79	17	6	10 452
Women	175	1 276	1 777	1 403	1 148	652	160	29	7	6	6 633
Sex, not stated	-	-	-	-	-	-	-	-	-	1 276	1 276
<b>Offences against property</b>	<b>85</b>	<b>6 291</b>	<b>15 758</b>	<b>7 535</b>	<b>5 709</b>	<b>4 612</b>	<b>4 580</b>	<b>3 588</b>	<b>3 071</b>	<b>755</b>	<b>51 984</b>
Men	40	2 723	6 116	3 103	2 207	1 440	1 136	698	496	1	17 960
Women	45	3 568	9 642	4 432	3 502	3 172	3 444	2 890	2 575	-	33 270
Sex, not stated	-	-	-	-	-	-	-	-	-	754	754
<b>Other criminal offences</b>	<b>3</b>	<b>9</b>	<b>309</b>	<b>113</b>	<b>138</b>	<b>378</b>	<b>80</b>	<b>14</b>	<b>22</b>	<b>18</b>	<b>1 084</b>
Men	1	7	1	27	33	50	10	8	14	-	151
Women	2	2	308	86	105	328	70	6	8	-	915
Sex, not stated	-	-	-	-	-	-	-	-	-	18	18

[www.statbank.dk/straf5](http://www.statbank.dk/straf5)

**Table 180** Victims of criminal offences by type of offence. 2011

	0-9 years	10-19 years	20-29 years	30-39 years	40-49 years	50-59 years	60-69 years	70-79 years	80 years +	Age, not stated	Total
<b>Criminal offences, total</b>	<b>838</b>	<b>11 240</b>	<b>21 382</b>	<b>11 023</b>	<b>8 663</b>	<b>6 528</b>	<b>5 207</b>	<b>3 731</b>	<b>3 129</b>	<b>2 065</b>	<b>73 806</b>
<b>Sexual offences</b>	<b>353</b>	<b>1 197</b>	<b>381</b>	<b>172</b>	<b>115</b>	<b>63</b>	<b>59</b>	<b>21</b>	<b>12</b>	<b>4</b>	<b>2 377</b>
Incest, etc.	20	31	-	1	-	-	-	-	-	1	53
Rape, etc.	12	208	116	37	21	7	1	2	2	-	406
Heterosexual offences, children under 12 years	131	35	-	-	-	-	-	-	-	1	167
Heterosexual offences, other	7	206	19	2	2	1	1	-	-	-	238
Homosexual offences, children under 12 years	4	-	-	-	-	-	-	-	-	-	4
Homosexual offences, other	8	10	1	1	-	-	-	-	-	-	20
Offences against decency	171	707	245	131	92	55	57	19	10	2	1 489
<b>Crimes of violence</b>	<b>397</b>	<b>3 743</b>	<b>4 934</b>	<b>3 203</b>	<b>2 701</b>	<b>1 475</b>	<b>488</b>	<b>108</b>	<b>24</b>	<b>1 288</b>	<b>18 361</b>
Assaulting public servant	1	2	215	470	439	369	85	4	1	1 181	2 767
Assaulting police at gatherings	-	-	-	-	-	-	-	-	-	-	-
Homicide, Infanticide, Attempted homicide	3	32	100	46	29	15	9	1	3	3	241
Assaulting private individual	352	2 874	3 538	1 866	1 484	717	252	74	11	27	11 195
Common assault	297	2 495	2 935	1 534	1 219	601	227	64	10	18	9 400
Grievous assault	53	375	602	332	260	116	24	10	1	9	1 782
Particularly grievous assault	2	4	1	-	5	-	1	-	-	-	13
Offences against life and health	6	36	61	42	46	21	12	2	-	36	262
Refrain from helping a person in danger, etc.	-	5	4	4	6	3	1	1	2	1	27
Unlawful compulsion	2	86	46	18	11	11	4	1	-	1	180
Loss of liberty	4	24	29	8	10	4	1	1	-	-	81
Serious loss of liberty	-	5	4	2	4	1	-	-	-	-	16
Threats	29	679	937	747	672	334	124	24	7	39	3 592
<b>Offences against property</b>	<b>85</b>	<b>6 291</b>	<b>15 758</b>	<b>7 535</b>	<b>5 709</b>	<b>4 612</b>	<b>4 580</b>	<b>3 588</b>	<b>3 071</b>	<b>755</b>	<b>51 984</b>
Theft of handbags	26	1 146	3 630	1 715	1 070	857	716	473	341	200	10 174
Theft from pocket or handbag	57	4 376	11 266	5 462	4 290	3 500	3 604	2 765	1 780	488	37 588
Theft by trick in residences	-	2	13	7	21	37	104	266	887	5	1 342
Theft connected with prostitution	-	-	-	1	-	-	1	-	-	-	2
Theft connected with violence	-	14	23	5	4	-	2	-	-	1	49
Blackmail	-	80	74	38	40	14	6	3	-	3	258
Usury	-	1	3	1	5	8	-	1	-	-	19
Robbery	2	640	674	244	211	139	114	44	31	53	2 152
Particularly serious robbery	-	3	10	11	7	2	1	-	-	4	38
<b>Other criminal offences</b>	<b>3</b>	<b>9</b>	<b>309</b>	<b>113</b>	<b>138</b>	<b>378</b>	<b>80</b>	<b>14</b>	<b>22</b>	<b>18</b>	<b>1 084</b>
Breach of a caution	3	8	308	109	137	375	77	13	22	14	1 066
Persecute at reiterate accusation	-	-	-	-	-	-	1	-	-	-	1
Slander, libel, defamation, insult	-	1	1	4	1	3	2	1	-	4	17

Note: The age is calculated on the crimedate.

www.statbank.dk/straf5

**Table 181** Convictions for offences against the Penal Code by age and sex. 2010

	Guilty decisions									Not guilty decisions	Decisions total
	15-19 years	20-24 years	25-29 years	30-39 years	40-49 years	50 years +	Men total <sup>2</sup>	Women total <sup>2</sup>	Total <sup>2</sup>		
<b>Penal Code offences, total<sup>1</sup></b>	<b>8 583</b>	<b>7 876</b>	<b>4 803</b>	<b>7 793</b>	<b>5 811</b>	<b>4 305</b>	<b>31 241</b>	<b>8 063</b>	<b>39 304</b>	<b>14 310</b>	<b>53 614</b>
<b>Sexual offences, total</b>	<b>80</b>	<b>80</b>	<b>66</b>	<b>149</b>	<b>152</b>	<b>161</b>	<b>678</b>	<b>11</b>	<b>689</b>	<b>579</b>	<b>1 268</b>
Incest, etc.	3	3	4	8	10	6	32	2	34	19	53
Rape, etc.	4	17	9	14	10	4	58	-	58	169	227
Heterosexual offences, children under 12 years	7	5	3	9	20	13	57	-	57	49	106
Other heterosexual offences	38	17	7	13	12	6	93	1	94	105	199
Homosexual offences	1	-	-	4	3	2	10	-	10	5	15
Indecent exposure	25	31	27	65	69	92	306	3	309	177	486
Prostitution, etc.	2	7	16	36	28	38	122	5	127	55	182
<b>Crimes of violence</b>	<b>2 013</b>	<b>1 860</b>	<b>1 015</b>	<b>1 571</b>	<b>1 278</b>	<b>579</b>	<b>7 408</b>	<b>922</b>	<b>8 330</b>	<b>3 967</b>	<b>12 297</b>
Offences against public authorities	307	337	201	326	293	166	1 383	250	1 633	290	1 923
Gathering with disturbance of public order	11	48	27	17	2	-	70	35	105	57	162
Homicide	3	8	6	12	19	6	48	6	54	23	77
Attempted homicide	3	7	5	6	4	2	25	2	27	57	84
Assault on private person	1 497	1 231	612	934	724	307	4 777	539	5 316	2 769	8 085
Common assault	1 275	953	480	755	595	256	3 877	448	4 325	2 197	6 522
Grievous assault	222	275	128	173	128	51	888	89	977	559	1 536
Particularly grievous assault	-	3	4	6	1	-	12	2	14	13	27
Intentional bodily harm	-	-	-	-	-	-	-	-	-	-	-
Homicide and bodily harm by negligence	1	5	-	5	3	3	16	1	17	4	21
Offences against life or body	20	36	15	26	25	11	124	9	133	111	244
Offences against personal liberty	28	22	13	23	18	7	95	16	111	69	180
Threats	143	166	136	222	189	77	869	64	933	587	1 520
<b>Offences against property</b>	<b>5 969</b>	<b>5 123</b>	<b>3 137</b>	<b>5 255</b>	<b>3 838</b>	<b>3 307</b>	<b>20 004</b>	<b>6 742</b>	<b>26 746</b>	<b>8 549</b>	<b>35 295</b>
Forgery	82	113	84	171	115	62	446	181	627	228	855
Arson	68	28	17	33	33	16	149	46	195	157	352
Housebreaking	732	635	313	454	202	38	2 282	100	2 382	1 683	4 065
Burglaries from bank, shops etc.	361	325	152	227	102	22	1 143	48	1 191	815	2 006
Burglaries from dwellings	267	248	141	203	83	13	912	45	957	740	1 697
Burglary (uninhabited buildings)	104	62	20	24	17	3	227	7	234	128	362
Thefts	2 669	2 523	1 735	3 178	2 549	2 701	9 951	5 487	15 438	2 350	17 788
Thefts from cars, boats, etc.	84	98	60	64	28	1	334	1	335	250	585
Shoplifting, etc.	1 818	1 531	1 186	2 428	2 079	2 490	6 791	4 819	11 610	571	12 181
Other thefts	767	894	489	686	442	210	2 826	667	3 493	1 529	5 022
Theft of motor vehicles	365	241	114	150	64	14	899	49	948	730	1 678
Theft of mopeds	195	45	10	17	13	2	278	7	285	104	389
Theft of bicycles	78	47	35	70	27	18	263	14	277	60	337
Theft of other objects	222	72	30	36	27	6	376	20	396	143	539
Larceny by finding	100	93	80	86	66	27	409	44	453	55	508
Embezzlement, etc.	145	279	166	383	307	187	1 042	425	1 467	931	2 398
Blackmail and usury	13	18	7	7	4	3	50	2	52	88	140
Fraud against creditor	-	2	4	7	10	5	21	7	28	38	66
Handling stolen goods	164	255	169	199	128	53	864	104	968	387	1 355
Robbery	449	222	94	116	38	9	884	49	933	536	1 469
Serious fraudulent tax evasion	-	1	4	21	32	22	77	3	80	63	143
Malicious damage	651	503	249	296	202	129	1 859	183	2 042	955	2 997
Feloniously receiving stolen goods	7	13	6	8	6	7	44	3	47	13	60
Misappropriation and offences against property	29	33	20	23	15	8	110	18	128	28	156
<b>Other offences</b>	<b>521</b>	<b>813</b>	<b>585</b>	<b>818</b>	<b>543</b>	<b>258</b>	<b>3 151</b>	<b>388</b>	<b>3 539</b>	<b>1 215</b>	<b>4 754</b>
Selling narcotics	37	113	99	161	97	29	495	41	536	143	679
Smuggling etc. of narcotics	3	24	23	53	30	10	137	6	143	69	212
Homicide by negligence in road traffic	14	35	20	36	37	54	165	31	196	48	244
Other offences against the Penal Code	467	641	443	568	379	165	2 354	310	2 664	955	3 619

<sup>1</sup> Enterprises are not included. 10 enterprises were convicted in 2010. <sup>2</sup> Includes a total of 133 14 year olds (78 males and 55 females).

**Table 182** Offences against the Penal Code by type of penalty. 2010

	Decisions total	Guilty decisions					Not guilty decisions		
		Total	Imprisonment		Fines	Other penalty <sup>1</sup>	Total	Prosecutor dropped	Acquitted
			Suspended	Unsuspen- ded					
<b>Penal Code, total</b>	<b>53 624</b>	<b>39 311</b>	<b>8 578</b>	<b>8 912</b>	<b>17 955</b>	<b>3 866</b>	<b>14 313</b>	<b>12 430</b>	<b>1 883</b>
<b>Sexual offences, total</b>	<b>1 268</b>	<b>689</b>	<b>193</b>	<b>240</b>	<b>156</b>	<b>100</b>	<b>579</b>	<b>507</b>	<b>72</b>
Rape, etc.	227	58	2	48	-	8	169	152	17
Heterosexual offences	305	151	48	62	2	39	154	137	17
Homosexual offences	15	10	4	6	-	-	5	5	-
Indecent exposure	486	309	81	48	138	42	177	145	32
Other sexual offences	235	161	58	76	16	11	74	68	6
<b>Crimes of violence, total</b>	<b>12 297</b>	<b>8 330</b>	<b>3 373</b>	<b>3 385</b>	<b>402</b>	<b>1 170</b>	<b>3 967</b>	<b>3 168</b>	<b>799</b>
Offences against public authorities	1 923	1 633	577	461	197	398	290	215	75
Homicide	77	54	-	47	-	7	23	21	2
Attempted homicide	84	27	-	22	-	5	57	56	1
Assault on private person	8 085	5 316	2 288	2 335	89	604	2 769	2 176	593
Other crimes of violence	2 128	1 300	508	520	116	156	828	700	128
<b>Offences against property</b>	<b>35 299</b>	<b>26 748</b>	<b>4 436</b>	<b>3 837</b>	<b>16 221</b>	<b>2 254</b>	<b>8 551</b>	<b>7 694</b>	<b>857</b>
Forgery	855	627	286	146	128	67	228	194	34
Arson	352	195	53	74	6	62	157	140	17
Housebreaking	4 065	2 382	958	948	127	349	1 683	1 569	114
Theft	20 731	17 344	1 564	1 323	13 142	1 315	3 387	3 088	299
Embezzlement, fraud etc.	2 398	1 467	775	177	372	143	931	810	121
Fraud against creditors	66	28	19	5	3	1	38	34	4
Handling stolen goods	1 355	968	269	223	412	64	387	326	61
Robbery	1 469	933	133	744	3	53	536	487	49
Malicious damage	2 997	2 042	277	76	1 542	147	955	823	132
Other offences against property	1 011	762	102	121	486	53	249	223	26
<b>Other offences</b>	<b>4 760</b>	<b>3 544</b>	<b>576</b>	<b>1 450</b>	<b>1 176</b>	<b>342</b>	<b>1 216</b>	<b>1 061</b>	<b>155</b>
Narcotics	891	679	71	567	7	34	212	202	10
Other offences	3 869	2 865	505	883	1 169	308	1 004	859	145

<sup>1</sup> Includes absolute discharge, charges dropped and other decisions.



**Table 183** Convictions for offences against special legislation by age and sex. 2010

	14 years	15-19 years	20-24 years	25-29 years	30-39 years	40-49 years	50 + years	Men total	Women total	Total
<b>Special legislation, total<sup>1</sup></b>	<b>10</b>	<b>3 133</b>	<b>5 356</b>	<b>3 596</b>	<b>5 404</b>	<b>4 877</b>	<b>4 291</b>	<b>23 638</b>	<b>3 029</b>	<b>26 667</b>
Act on Euforiant	4	1 823	3 063	1 968	2 321	1 520	603	10 417	885	11 302
Aliens Act	-	7	74	111	188	102	44	360	166	526
The Firearms Act	3	351	588	421	567	465	404	2 586	213	2 799
Fire-prevention legislation, etc.	-	24	29	34	69	99	144	320	79	399
Police regulations	2	261	312	128	98	71	32	853	51	904
Income tax and fiscal acts	-	10	20	42	100	121	114	365	42	407
Health and social legislation	-	38	147	110	163	130	164	680	72	752
Environmental legislation	-	25	33	36	134	266	394	774	114	888
Laws concerning animals, hunting, etc.	1	50	184	207	619	780	1 033	1 998	876	2 874
Laws concerning work, transport, etc.	-	14	76	188	531	664	766	2 137	102	2 239
Laws concerning gambling, licences, food	-	103	195	109	179	114	81	638	143	781
Other special legislation	-	427	635	242	435	545	512	2 510	286	2 796

Note: Special legislation excl. the Road Traffic Act.

www.statbank.dk/straf33 and straf44

<sup>1</sup> Excl. 3,132 enterprises.**Table 184** Convictions for offences against special legislation by conviction type. 2010

	Decisions total	Guilty decisions					Not guilty decisions		
		Total	Imprisonment		Fines	Other penalty <sup>1</sup>	Total Prosecutor dropped	Acquitted	
			Suspended	Unuspended					
<b>Special legislation, total</b>	<b>29 799</b>	<b>28 698</b>	<b>962</b>	<b>1 120</b>	<b>25 858</b>	<b>758</b>	<b>1 101</b>	<b>972</b>	<b>129</b>
Act on Euforiant	11 303	10 823	746	638	8 897	542	480	420	60
Aliens Act	644	620	8	174	429	9	24	21	3
The Firearms Act	2 804	2 353	124	258	1 813	158	451	410	41
Fire prevention legislation, etc.	404	404	-	-	404	-	-	-	-
Police regulations	905	905	-	3	900	2	-	-	-
Income tax and fiscal acts	423	421	39	25	357	-	2	2	-
Health and social legislation	878	834	9	12	803	10	44	44	-
Environmental legislation	1 136	1 136	-	-	1 131	5	-	-	-
Laws concerning animals, hunting, etc.	2 990	2 964	14	2	2 937	11	26	16	10
Laws concerning work, transport, etc.	3 317	3 256	4	-	3 240	12	61	46	15
Laws concerning gambling, licences, food	126	126	12	7	107	-	-	-	-
Other special legislation	4 869	4 856	6	1	4 840	9	13	13	-

Note: Special legislation excl. the Road Traffic Act.

www.statbank.dk/straf33 and straf44

<sup>1</sup> Includes absolute discharge, charges dropped and other decisions.

**Table 185** Convictions for offences against the Road Traffic Act by age and sex. 2010

	14 years	15-19 years	20-24 years	25-29 years	30-39 years	40-49 years	50 + years	Men total	Women total	Total
<b>Road Traffic Act, total<sup>1</sup></b>	<b>27</b>	<b>8 693</b>	<b>14 078</b>	<b>11 743</b>	<b>27 153</b>	<b>27 673</b>	<b>27 022</b>	<b>90 615</b>	<b>25 774</b>	<b>116 389</b>
Traffic acc. under the influence of alcohol	-	156	267	196	324	336	365	1 443	201	1 644
Drunken driving	-	512	1 346	935	1 612	2 064	2 372	8 048	793	8 841
Vehicle deficiencies	6	2 842	987	520	696	676	511	5 741	497	6 238
Other offences	21	5 183	11 478	10 092	24 521	24 597	23 774	75 383	24 283	99 666
Non-compliance with speed limits	-	2 193	6 879	6 685	18 022	19 234	18 645	52 146	19 512	71 658
Non-compliance with orders	-	83	77	42	52	40	37	309	22	331
Failure to give way to approaching traffic	1	230	413	237	626	651	1 182	2 167	1 173	3 340
Overload	-	7	39	45	157	171	195	604	10	614
Other	20	2 670	4 070	3 083	5 664	4 501	3 715	20 157	3 566	23 723

<sup>1</sup> Enterprises are not included. 716 enterprises were convicted in 2010.

www.statbank.dk/straf33 and straf44

**Table 186** Convictions for offences against the Road Traff. Act by convict. type. 2010

	Decisions total	Guilty decisions					Not guilty decisions		
		Total	Imprisonment		Fines	Other penalty <sup>1</sup>	Total Prosecutor dropped	Acquitted	dropped
			Suspended	Unsuspended					
<b>Road Traffic Act, total</b>	<b>117 105</b>	<b>115 919</b>	<b>2 572</b>	<b>1 665</b>	<b>111 312</b>	<b>370</b>	<b>1 186</b>	<b>853</b>	<b>333</b>
<b>Traffic acc. under the influence of alcohol</b>	<b>1 644</b>	<b>1 515</b>	<b>378</b>	<b>133</b>	<b>995</b>	<b>9</b>	<b>129</b>	<b>110</b>	<b>19</b>
Drunken driving	8 841	8 533	1 714	988	5 780	51	308	263	45
Vehicle deficiencies	6 291	6 257	-	-	6 244	13	34	23	11
Other offences	100 329	99 614	480	544	98 293	297	715	457	258
Non-compliance with speed limits	71 668	71 515	18	10	71 456	31	153	91	62
Non-compliance with orders	331	327	-	1	324	2	4	1	3
Failure to give way to approaching traffic	3 340	3 267	5	-	3 251	11	73	35	38
Over loading	846	843	-	-	842	1	3	3	-
Other	24 144	23 662	457	533	22 420	252	482	327	155

<sup>1</sup> Includes absolute discharge, charges dropped and other decisions.

www.statbank.dk/straf33 and straf44

**Table 187** Convictions for offences against the Penal Code and special legisl. 2010

	Guilty decisions				Not guilty decisions			
	Penal Code	Road Traffic Act	Other special legislation	Total	Penal Code	Road Traffic Act	Other special legislation	Total
Number per 100,000 at age:								
<b>Men 14 years +, total</b>	<b>1 385</b>	<b>3 972</b>	<b>1 005</b>	<b>6 362</b>	<b>549</b>	<b>47</b>	<b>43</b>	<b>639</b>
14 years	428	137	55	620	126	-	-	126
15-19 years	3 761	4 206	1 533	9 500	1 494	44	57	1 595
20-24 years	3 949	6 915	2 805	13 668	1 670	117	148	1 934
25-29 years	2 613	6 047	1 975	10 636	1 116	98	124	1 338
30-39 years	1 708	5 433	1 223	8 364	670	72	51	793
40-49 years	1 091	4 925	967	6 983	413	47	37	497
50 years +	299	2 158	377	2 834	98	18	9	125
<b>Women 14 years +, total</b>	<b>347</b>	<b>1 102</b>	<b>126</b>	<b>1 575</b>	<b>83</b>	<b>6</b>	<b>5</b>	<b>93</b>
14 years	323	12	-	335	41	-	-	41
15-19 years	1 033	578	143	1 753	221	4	5	231
20-24 years	764	1 381	228	2 373	226	12	14	252
25-29 years	479	1 415	204	2 098	151	4	12	166
30-39 years	402	1 840	182	2 425	117	10	6	133
40-49 years	327	1 784	179	2 290	77	7	5	89
50 years +	139	600	57	797	19	3	1	23

www.statbank.dk/straf33 and straf44

**Table 188** Convictions relating to Penal Code and special legislat. by sentence. 2010

Number per 100.000 at age	Decisions total	Guilty decisions					Not guilty decisions		
		Total	Imprisonment		Fines	Other penalty	Total	Prosecutor dropped	Acquitted
			Suspended	Unsu-suspended					
<b>Men 14 years +, total</b>	<b>7 001</b>	<b>6 362</b>	<b>456</b>	<b>492</b>	<b>5 223</b>	<b>192</b>	<b>639</b>	<b>551</b>	<b>88</b>
14 years	747	620	38	27	450	104	126	121	5
15-19 years	11 095	9 500	1 327	676	7 098	398	1 595	1 405	190
20-24 years	15 602	13 668	1 165	1 457	10 541	505	1 934	1 692	243
25-29 years	11 973	10 636	745	1 133	8 346	412	1 338	1 158	179
30-39 years	9 157	8 364	496	740	6 853	274	793	682	111
40-49 years	7 480	6 983	403	486	5 929	166	497	423	74
50 years +	2 959	2 834	131	95	2 564	43	125	99	26
<b>Women 14 years +, total</b>	<b>1 668</b>	<b>1 575</b>	<b>79</b>	<b>26</b>	<b>1 441</b>	<b>28</b>	<b>93</b>	<b>78</b>	<b>15</b>
14 years	376	335	23	-	282	29	41	41	-
15-19 years	1 984	1 753	237	40	1 412	65	231	199	31
20-24 years	2 625	2 373	185	68	2 064	56	252	203	50
25-29 years	2 264	2 098	108	43	1 903	44	166	146	20
30-39 years	2 558	2 425	99	41	2 247	38	133	113	21
40-49 years	2 379	2 290	88	40	2 133	29	89	76	13
50 years +	820	797	23	6	756	11	23	17	6

www.statbank.dk/straf33 and straf44

**Table 189** Unsuspended sentence for offences against Penal Code. 2010

	Up to 30 days	31-60 days	61-90 days	3 months +	Total
<b>Penal Code, total</b>	<b>1 843</b>	<b>1 989</b>	<b>1 002</b>	<b>3 994</b>	<b>8 828<sup>1</sup></b>
<b>Sexual offences</b>	<b>33</b>	<b>29</b>	<b>21</b>	<b>156</b>	<b>239</b>
Rape	-	1	-	47	48
<b>Crimes of violence</b>	<b>617</b>	<b>1 037</b>	<b>504</b>	<b>1 210</b>	<b>3 368</b>
Assault against public servant	175	146	50	87	458
Violence against the person	316	781	393	836	2 326
Threats	105	85	44	148	382
<b>Offences against property</b>	<b>860</b>	<b>805</b>	<b>399</b>	<b>1 711</b>	<b>3 775</b>
Burglary	148	252	128	416	944
Theft	542	329	141	310	1 322
Handling stolen goods	60	54	41	67	222
Robbery	10	27	28	629	694
<b>Other offences</b>	<b>333</b>	<b>118</b>	<b>78</b>	<b>917</b>	<b>1 446</b>
Trafficking or smuggling of drugs	9	12	22	524	567

<sup>1</sup> Excl. unsuspended sentence with unknown length of sentence[www.statbank.dk/straf47](http://www.statbank.dk/straf47)**Table 190** Unsuspended sentence for offences against special legislation. 2010

	Up to 30 days	31-60 days	61-90 days	3 months +	Total
<b>Road Traffic Acts total</b>	<b>857</b>	<b>512</b>	<b>185</b>	<b>111</b>	<b>1 665</b>
Traffic acc. under influence of alcohol	68	39	18	8	133
Drunken driving	482	276	133	97	988
Road Traffic Act, other	307	197	34	6	544
<b>Special legislation total</b>	<b>693</b>	<b>188</b>	<b>81</b>	<b>156</b>	<b>1 118<sup>1</sup></b>
Act on Euforians	334	116	61	125	636
The Firearms Act	217	20	11	10	258
Income tax and fiscal acts	3	11	4	7	25
Other special legislation	139	41	5	14	199

<sup>1</sup> Excl. unsuspended sentence with unknown length of sentence.[www.statbank.dk/straf47](http://www.statbank.dk/straf47)

**Table 191 Criminal cases concluded in courts of first instance. 2010**

	Lower courts			Total
	Copenhagen region <sup>1</sup>	Rest of the islands	Jutland	
<b>Cases concluded in First instance</b>	<b>45 989</b>	<b>32 637</b>	<b>44 350</b>	<b>122 976</b>
With lay assessors	5 439	4 429	6 918	16 786
Without lay assessors	36 323	23 997	31 415	91 735
Trials by jury	47	48	35	130
Confession	3 799	3 646	5 189	12 634
Other cases	381	517	793	1 691

<sup>1</sup> Judicial districts in Copenhagen and the Copenhagen region.

Source: The Court Administration

[www.statbank.dk/05](http://www.statbank.dk/05)

**Table 192 Civil justice: cases concluded in courts of first instance. 2010**

	Lower courts				High courts		First instance, total
	Copenhagen region <sup>1</sup>	Rest of the islands	Jutland	Total	Eastern High Court <sup>2</sup>	Western High Court <sup>2</sup>	
<b>Proceedings, total</b>	<b>42 470</b>	<b>42 105</b>	<b>52 737</b>	<b>137 312</b>	<b>146</b>	<b>83</b>	<b>137 541</b>
<b>Type of cases</b>							
Ordinary cases	15 539	13 191	17 042	45 772	146	83	46 001
Minor cases	18 648	21 682	25 834	66 164	-	-	66 164
Residential	2 327	1 361	1 668	5 356	-	-	5 356
Matrimonial	1 126	860	1 322	3 308	-	-	3 308
Parental responsibility	1 875	2 178	3 131	7 184	-	-	7 184
Paternity	425	598	723	1 746	-	-	1 746
Incapacitation	450	361	489	1 300	-	-	1 300
Other cases	2 080	1 874	2 528	6 482	-	-	6 482

<sup>1</sup> Judicial districts in Copenhagen and the Copenhagen region and the Maritime and Commercial Court.

<sup>2</sup> As from January 1, 2007 all first instance cases starts in lower courts. Consequently, figures for high courts will disappear in the course of time.

Source: The Court Administration

[www.statbank.dk/05](http://www.statbank.dk/05)

Table 193 Persons with guilty decisions, Penal code. 2010

	Total	Imprisonment			Fines	Withdrawal of charges	Other decisions
		Total	Suspended	Unsuspected			
<b>Penal Code, total</b>	<b>30 545</b>	<b>15 600</b>	<b>8 058</b>	<b>7 542</b>	<b>12 901</b>	<b>1 092</b>	<b>952</b>
<b>Sexual offences, total</b>	<b>717</b>	<b>476</b>	<b>198</b>	<b>278</b>	<b>149</b>	<b>55</b>	<b>37</b>
Incest etc.	39	37	13	24	1	1	-
Rape etc.	66	58	2	56	-	1	7
Heterosexual offences, children under 12	63	55	12	43	1	1	6
Heterosexual offences, other	104	73	37	36	1	28	2
Homosexual offences, children under 12	3	3	1	2	-	-	-
Homosexual offences, other	7	7	3	4	-	-	-
Offences against decency	303	136	84	52	131	19	17
Prostitution etc.	132	107	46	61	15	5	5
<b>Crimes of violence, total</b>	<b>7 961</b>	<b>6 579</b>	<b>3 256</b>	<b>3 323</b>	<b>355</b>	<b>435</b>	<b>592</b>
Assaulting public servant	1 497	999	558	441	170	89	239
Gathering with disturbance of public order	84	72	69	3	7	4	1
Homicide	57	49	-	49	-	-	8
Attempted homicide	27	22	-	22	-	-	5
Assault against private person	5 163	4 525	2 216	2 309	79	298	261
Common assault	4 178	3 651	2 050	1 601	78	273	176
Grievous assault	969	858	166	692	1	25	85
Particularly grievous assault	16	16	-	16	-	-	-
Homicide and bodily harm by negligence	15	11	2	9	4	-	-
Offences against life or body	127	113	51	62	2	3	9
Offences against personal liberty	103	93	39	54	4	2	4
Threats	887	694	321	373	89	39	65
<b>Offences against property, total</b>	<b>20 251</b>	<b>7 121</b>	<b>4 261</b>	<b>2 860</b>	<b>12 096</b>	<b>778</b>	<b>256</b>
Forgery	484	355	281	74	99	25	5
Arson	193	128	53	75	6	6	53
Burglary	1 875	1 625	908	717	102	113	35
Burglary in banks, shops	978	850	499	351	47	58	23
Burglary in dwellings	702	633	299	334	19	39	11
Burglary (uninhabited buildings)	195	142	110	32	36	16	1
Theft	10 749	1 499	1 046	453	8 806	393	51
Theft from cars, boats etc.	245	129	78	51	97	15	4
Theft from shops etc.	7 960	349	181	168	7 315	267	29
Other theft	2 544	1 021	787	234	1 394	111	18
Theft of motor vehicles	800	695	373	322	44	49	12
Theft of mopeds	238	20	18	2	211	7	-
Theft of bicycles	192	19	12	7	164	7	2
Theft of other objects	338	61	43	18	260	11	6
Larceny by finding	351	76	52	24	267	7	1
Embezzlement, fraud, breach of trust	1 323	932	763	169	321	51	19
Blackmail and usury	52	50	11	39	-	1	1
Fraud against creditors	29	25	18	7	3	1	-
Receiving stolen goods	776	400	256	144	345	24	7
Robbery	861	814	128	686	3	5	39
Serious fraudulent tax evasion etc.	78	73	27	46	4	-	1
Malicious damage	1 793	334	263	71	1 365	71	23
Feloniously receiving stolen goods	39	8	5	3	30	1	-
Misappropriation and offences against property	80	7	4	3	66	6	1
<b>Other offences, total</b>	<b>3 076</b>	<b>1 940</b>	<b>561</b>	<b>1 379</b>	<b>906</b>	<b>148</b>	<b>82</b>
Selling narcotics etc.	512	484	61	423	5	6	17
Smuggling narcotics	120	112	10	102	-	1	7
Homicide by negligence in road traffic	71	52	9	43	17	1	1
Other stipulations in Penal Code	2 373	1 292	481	811	884	140	57

**Table 194** Persons with guilty decisions, traffic law and special laws. 2010

	Total	Imprisonment			Fines	Withdrawal of charges	Other penalty
		Total	Suspended	Unsuspected			
<b>Road Traffic Act, total</b>	<b>100 585</b>	<b>4 059</b>	<b>2 455</b>	<b>1 604</b>	<b>96 319</b>	<b>147</b>	<b>60</b>
Traffic acc. under the influence of alcohol	1 183	495	369	126	683	4	1
Drunken driving	7 052	2 603	1 635	968	4 424	17	8
Vehicle deficiencies	5 473	-	-	-	5 463	5	5
Other offences	86 877	961	451	510	85 749	121	46
<b>Special legislation, total</b>	<b>21 612</b>	<b>1 785</b>	<b>936</b>	<b>849</b>	<b>19 388</b>	<b>370</b>	<b>69</b>
Act on Euforiant	9 293	1 254	728	526	7 740	271	28
The Firearms Act	2 017	386	122	264	1 529	76	26
Income tax and fiscal acts	289	68	39	29	221	-	-
Other special legislation	10 013	77	47	30	9 898	23	15

[www.statbank.dk/strafna1](http://www.statbank.dk/strafna1)

**Table 195** Crime rate and origin. 2010

	Western countries			Non-western countries			Danish origin
	Immigrant	Descendant	Total	Immigrant	Descendant	Total	
<b>Men, 15-79 years, total</b>	<b>2 889</b>	<b>298</b>	<b>3 187</b>	<b>11 357</b>	<b>3 968</b>	<b>15 325</b>	<b>93 501</b>
<b>Women, 15-79 years, total</b>	<b>960</b>	<b>84</b>	<b>1 044</b>	<b>2 243</b>	<b>636</b>	<b>2 879</b>	<b>28 463</b>
	— index, men total = 100 —						
Men, 15-79 years	65	103	67	161	253	178	95
Of which:							
15-19 years	71	97	79	176	213	198	91
20-29 years	45	97	48	159	279	189	93
30-39 years	68	105	70	164	281	177	94
40-49 years	69	107	71	160	196	160	96
50-59 years	97	92	97	156	143	156	97
60-69 years	116	161	117	157	0	157	98
70-79 years	126	225	131	150	0	149	98
	— index, women total = 100 —						
Women, 15-79 years	77	116	79	101	184	113	100

Note: Only persons found guilty of offences against the Penal Code, Road Traffic Act or other special legislation. Crime rate is the percentage of a given group in the population who have been convicted. The rates above are given as index figures where the rate for everyone in the age group is set at 100. The total crime rate is standardized by age, i.e. it has been corrected for the distribution by age being unequal for the different country of origin groups. Crime rates are therefore mutually comparable.

[www.statbank.dk/strafna1](http://www.statbank.dk/strafna1)

Table 196 Crime index for men. 2010

	Penal Code	Road Traffic Act	Special legislation	Total
index, all men = 100				
<b>EU countries</b>				
Denmark	99	97	100	98
Romania	48	83	22	63
Poland	36	79	33	59
Sweden	63	59	53	59
United Kingdom	43	64	50	58
Germany	33	63	30	52
<b>Other European countries</b>				
Turkey	158	244	185	209
Yugoslavia	225	218	213	209
Bosnia and Herzegovina	148	110	78	110
Ukraine	31	76	15	52
Norway	42	58	59	52
Iceland	61	75	83	69
<b>Africa</b>				
Marocco	282	176	305	201
Somalia	257	102	332	191
<b>Asia</b>				
Lebanon	276	270	260	246
Pakistan	138	218	200	188
Iraq	160	188	160	167
Iran	167	163	196	162
Afghanistan	135	141	118	134
Sri Lanka	127	152	117	128
Vietnam	141	84	77	95

Note: Selection of countries of origin with at least 100 men convicted. Standardized with regard to age and socio-economic status.

[www.statbank.dk/strafna1](http://www.statbank.dk/strafna1)



**Table 197** Duration to recidivism by type of index penalty. 2007-2009

	New criminal offence after:				No new criminal offence	Total	Recidivism rates
	½ year	1 year	2 years	Total			
<b>Total</b>	<b>15 438</b>	<b>9 537</b>	<b>13 108</b>	<b>38 083</b>	<b>95 628</b>	<b>133 711</b>	<b>28</b>
Released after serving sentence in prison	1 742	791	792	3 325	2 334	5 659	59
Released after serving sentence in home confinement	155	88	137	380	443	823	46
Conviction by order ceased/repealed	32	21	24	77	235	312	25
Suspended sentence and community service	404	217	274	895	1 519	2 414	37
Suspended sentence	903	513	645	2 061	3 041	5 102	40
Convictions resulting in fines	11 767	7 708	11 047	30 522	87 169	117 691	26
Cases of withdrawal of charges subject to conditions	20	14	18	52	76	128	41
Cases of withdrawal of charges not subject to conditions	415	185	171	771	811	1 582	49

[www.statbank.dk/recidiv1](http://www.statbank.dk/recidiv1)

**Table 198** Duration to recidivism by sex and age<sup>1</sup>. 2007-2009

	New criminal offence after:				No new criminal offence	Total	Recidivism rates
	½ year	1 year	2 years	Total			
<b>Males, total</b>	<b>14 036</b>	<b>8 537</b>	<b>11 607</b>	<b>34 180</b>	<b>71 827</b>	<b>106 007</b>	<b>32</b>
15-19 years	2 934	1 676	2 067	6 677	6 784	13 461	50
20-24 years	2 995	1 600	1 924	6 519	8 171	14 690	44
25-29 years	2 043	1 105	1 462	4 610	7 581	12 191	38
30-34 years	1 641	1 000	1 440	4 081	8 111	12 192	33
35-39 years	1 440	899	1 252	3 591	8 567	12 158	30
40-49 years	1 980	1 436	2 094	5 510	16 289	21 799	25
50-59 years	673	565	958	2 196	9 757	11 953	18
60 years +	330	256	410	996	6 567	7 563	13
<b>Females, total</b>	<b>1 402</b>	<b>1 000</b>	<b>1 501</b>	<b>3 903</b>	<b>23 801</b>	<b>27 704</b>	<b>14</b>
15-19 years	168	106	137	411	1 879	2 290	18
20-24 years	179	106	171	456	2 173	2 629	17
25-29 years	151	114	164	429	2 258	2 687	16
30-34 years	172	139	183	494	2 895	3 389	15
35-39 years	200	145	214	559	3 308	3 867	14
40-49 years	327	260	401	988	5 997	6 985	14
50-59 years	145	91	146	382	3 269	3 651	10
60 years +	60	39	85	184	2 022	2 206	8

<sup>1</sup> Age at time of release/conviction.

[www.statbank.dk/recidiv1](http://www.statbank.dk/recidiv1)

**Table 199** Inmates in main prisons and local prisons and institutions

	Men		Women		Total	
	2009	2010	2009	2010	2009	2010
<b>Average number of inmates per day</b>	<b>3 678</b>	<b>3 940</b>	<b>187</b>	<b>179</b>	<b>3 865</b>	<b>4 119</b>
<b>Number of new inmates per year<sup>1</sup></b>	<b>13 045</b>	<b>13 326</b>	<b>1 199</b>	<b>1 143</b>	<b>14 244</b>	<b>14 469</b>
<b>Local prisons and Copenhagen prisons</b>						
<b>Average number of inmates per day</b>	<b>1 521</b>	<b>1 644</b>	<b>95</b>	<b>87</b>	<b>1 617</b>	<b>1 731</b>
Custody and arrest	1 227	1 302	77	69	1 304	1 370
Prison and detention	241	287	11	11	251	298
Fine	-	0	-	-	-	0
Admitted under the Aliens Act	54	55	8	8	62	63
Other	0	0	-	-	0	0
<b>State prisons</b>						
<b>Average number of inmates per day</b>	<b>2 015</b>	<b>2 150</b>	<b>84</b>	<b>85</b>	<b>2 098</b>	<b>2 235</b>
Custody and arrest	11	11	2	4	13	14
Prison and detention	1 987	2 122	81	81	2 068	2 203
Fine	0	1	-	0	0	1
Admitted under the Aliens Act	-	-	-	0	-	-
Other	16	17	0	0	16	17
<b>Institutions</b>						
<b>Average number of residents per day</b>	<b>142</b>	<b>147</b>	<b>8</b>	<b>7</b>	<b>150</b>	<b>154</b>
Judge too suspended	0	0	-	1	0	1
Paroleed	-	1	-	-	-	1
Judge too prisons	107	109	6	6	113	115
Voluntary clientele	36	38	1	-	37	38

Note: Excl. Sandholm camp and Åbenrå asylum department.

Source: Department of Prisons and Probation

<sup>1</sup> Include new inmates in local and main prisons as arrested, remand prisoned or convicted. Transfers between institutions are not included.

[www.statbank.dk/05](http://www.statbank.dk/05)

Table 200 Criminal justice, Appeals. 2011

	Eastern High Court	Western High Court	Total	Supreme Court			Total
				From Eastern High Court	From Western High Court	From other courts	
<b>Appeals, total</b>	<b>1 783</b>	<b>1 275</b>	<b>3 058</b>	<b>18</b>	<b>5</b>	<b>-</b>	<b>23</b>
<b>Charged persons, total</b>	<b>1 437</b>	<b>1 400</b>	<b>2 837</b>	<b>20</b>	<b>5</b>	<b>-</b>	<b>25</b>
Of which							
Penalty increased	218	158	376	2	-	-	2
Penalty confirmed	725	435	1 160	9	4	-	13
Penalty mitigated	308	245	553	9	1	-	10
Other decisions	37	25	62	-	-	-	-
Acquittal both instances	3	4	7	...	...	...	...
Conviction lower court/acquittal high court	77	66	143	...	...	...	...
Acquittal lower court/conviction high court	21	15	36	...	...	...	...
<b>Appeals in interlocutory procedure, total</b>	<b>1 962</b>	<b>1 653</b>	<b>3 615</b>	<b>27</b>	<b>13</b>	<b>-</b>	<b>40</b>

Note: Other decisions include raised and repealed cases.

Source: The Court Administration

[www.statbank.dk/05](http://www.statbank.dk/05)

**Table 201** Enforcement proceedings, registration, estates of deceased persons and bankruptcies, etc. 2010

	Copenhagen region <sup>1</sup>	Other islands	Jutland	Total
<b>Enforcement proceedings, total</b>	<b>120 837</b>	<b>145 141</b>	<b>154 818</b>	<b>420 796</b>
Ordinary cases:				
Demand, payments	64 291	84 230	87 845	236 366
Demand, payments, distress	1 844	3 780	3 868	9 492
Credit accord, Act	646	981	1 067	2 694
Other cases	239	199	277	715
Special cases:				
Custody cases	548	665	1 015	2 228
Enforcement proceedings, spontaneously	17 857	9 759	10 323	37 939
Ban-evidences cases	91	91	142	324
Other cases	50	142	109	301
Inkassoproces:				
Claim payment	35 271	45 294	50 172	130 737
Petitions for auctions sales of real property	2 382	5 564	6 047	13 993
Auctions sales of real property	3 029	5 800	5 994	14 823
Of which:Consistently auctions sales	992	2 292	2 021	5 305
<b>Notarial acts</b>	<b>25 836</b>	<b>14 352</b>	<b>23 713</b>	<b>63 901</b>
<b>Registrations, total</b>	<b>...</b>	<b>...</b>	<b>...</b>	<b>2 157 581</b>
Of which:				
Conveyances and title deeds	...	...	...	182 528
Mortgages, etc. on real property	...	...	...	1 592 463
Car- and personsbook	...	...	...	116 938
Other registrations	...	...	...	265 652
<b>Estates of deceased persons, total</b>	<b>13 875</b>	<b>17 483</b>	<b>24 302</b>	<b>55 660</b>
Ordinary estates of deceased persons:				
Disposed of without adm. § 18	4 880	5 068	6 778	16 726
Passed to surviving spouse § 22	129	226	270	625
Undivided possession § 24	2 096	4 095	5 992	12 183
Private adm. out of court § 25	3 288	3 888	5 504	12 680
Simple adm. out of court §§ 33-34	1 368	1 959	3 302	6 629
Administreded by executor § 36	1 682	1 901	1 968	5 551
Disposed with admin.	266	203	233	702
Revived cases with changed erstates adm.	114	83	161	358
Other erstates	38	45	65	148
Special erstates total	14	15	29	58
<b>Other probates<sup>2</sup></b>	<b>291</b>	<b>6 545</b>	<b>9 498</b>	<b>16 334</b>
Bankruptcy	41	2 207	2 998	5 246
Restructuring of debts	60	1 762	2 750	4 572
Suspension of payment	7	178	325	510
Liquidations	8	2 023	2 937	4 968
Spouse probates	168	297	323	788
Other cases	7	78	165	250

<sup>1</sup> Judicial districts in Copenhagen and the Copenhagen region, i.e. nos. 1-12 and the Maritime and Commercial Court. <sup>2</sup> Inclusive 5,736 cases tried in the Maritime and Commercial Court.

Source: The Court Administration

[www.statbank.dk/05](http://www.statbank.dk/05)