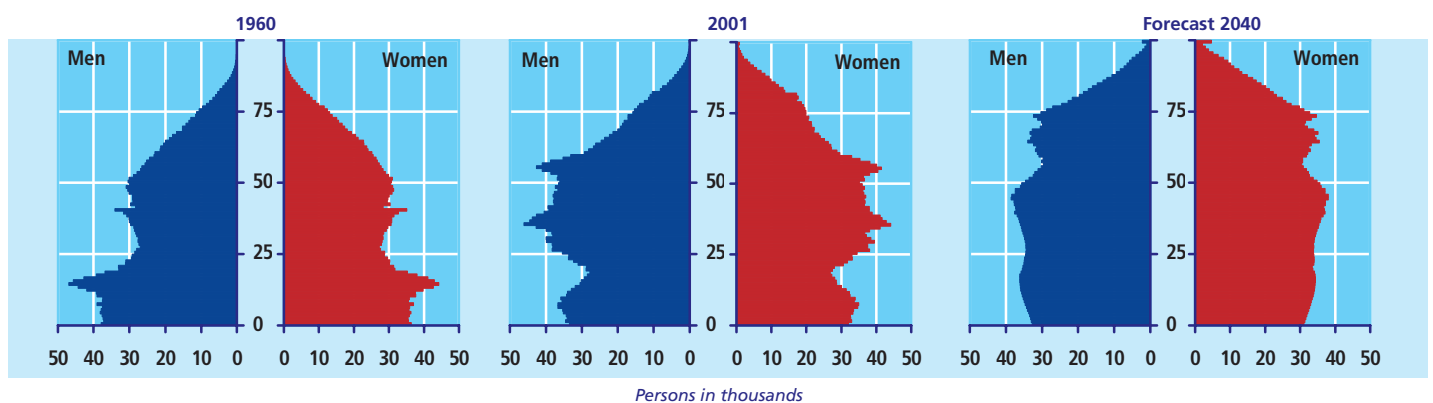


Population by age as of 1 January

	1992	1993	1994	1995	1996	1997	1998	1999	2000	2001	2002	1992	2002
												Per cent	
<b>Total population</b> .....	5 162 126	5 180 614	5 196 642	5 215 718	5 251 027	5 275 121	5 294 860	5 313 577	5 330 020	5 349 212	5 368 354	100.0	100.0
Men .....	2 544 454	2 554 594	2 563 442	2 573 324	2 592 222	2 604 937	2 615 669	2 625 421	2 634 122	2 644 319	2 654 146	100.0	100.0
Women .....	2 617 672	2 626 020	2 633 200	2 642 394	2 658 805	2 670 184	2 679 191	2 688 156	2 695 898	2 704 893	2 714 208	100.0	100.0
<b>0-5 years</b> .....	362 274	374 772	386 247	397 429	408 096	412 788	415 573	413 540	411 855	408 796	404 383	7.0	7.5
Boys .....	185 956	192 430	198 180	203 638	209 297	211 767	213 237	212 223	211 259	209 742	207 197	7.3	7.8
Girls .....	176 318	182 342	188 067	193 791	198 799	201 021	202 336	201 317	200 596	199 054	197 186	6.7	7.3
<b>6-15 years</b> .....	578 987	570 949	566 453	564 329	570 965	579 581	591 940	607 796	624 150	642 756	659 515	11.2	12.3
Boys .....	295 813	291 651	289 624	288 762	292 186	296 780	303 375	311 610	320 134	329 729	338 591	11.6	12.8
Girls .....	283 174	279 298	276 829	275 567	278 779	282 801	288 565	296 186	304 016	313 027	320 924	10.8	11.8
<b>16-19 years</b> .....	293 516	284 743	276 028	267 575	256 723	250 085	242 132	233 877	226 476	221 932	223 857	5.7	4.2
Men .....	149 650	145 573	141 064	136 857	131 505	127 809	123 514	119 359	115 366	113 105	114 235	5.9	4.3
Women .....	143 866	139 170	134 964	130 718	125 218	122 276	118 618	114 518	111 110	108 827	109 622	5.5	4.0
<b>20-24 years</b> .....	378 503	374 324	372 865	373 891	377 173	369 767	357 920	350 075	339 787	326 414	315 966	7.3	5.9
Men .....	194 217	191 684	190 383	190 288	191 621	187 542	181 637	177 534	172 217	165 369	159 458	7.6	6.0
Women .....	184 286	182 640	182 482	183 603	185 552	182 225	176 283	172 541	167 570	161 045	156 508	7.0	5.8
<b>25-59 years</b> .....	2 503 433	2 532 173	2 556 050	2 574 810	2 602 447	2 626 306	2 647 456	2 662 710	2 677 128	2 690 424	2 696 332	48.5	50.2
Men .....	1 271 119	1 286 357	1 298 934	1 308 661	1 322 707	1 334 841	1 345 250	1 352 165	1 358 314	1 363 848	1 365 836	50.0	51.5
Women .....	1 232 314	1 245 816	1 257 116	1 266 149	1 279 740	1 291 465	1 302 206	1 310 545	1 318 814	1 326 576	1 330 496	47.1	49.0
<b>60-64 years</b> .....	241 440	240 318	237 913	239 027	240 105	243 607	248 371	255 112	260 222	267 062	273 717	4.7	5.1
Men .....	116 223	115 655	114 680	115 375	116 221	118 215	120 861	124 406	127 627	131 368	134 979	4.6	5.1
Women .....	125 217	124 663	123 233	123 652	123 884	125 392	127 510	130 706	132 595	135 694	138 738	4.8	5.1
<b>65 and over</b> .....	803 973	803 335	801 086	798 657	795 518	792 987	791 468	790 467	790 402	791 828	794 584	15.6	14.8
Men .....	331 476	331 244	330 577	329 743	328 685	327 983	327 795	328 124	329 205	331 158	333 850	13.0	12.6
Women .....	472 497	472 091	470 509	468 914	466 833	465 004	463 673	462 343	461 197	460 670	460 734	18.1	17.0

New figures are expected to be published in February 2003.

Population by age





Population trends

	1991	1992	1993	1994	1995	1996	1997	1998	1999	2000	2001
<b>Births<sup>■</sup></b> .....	64 358	67 726	67 369	69 666	69 771	67 638	67 636	66 170	66 232	67 081	65 450
Boys .....	33 005	34 812	34 609	35 639	35 886	34 819	34 741	34 055	33 885	34 431	33 491
Girls .....	31 353	32 914	32 760	34 027	33 885	32 819	32 895	32 115	32 347	32 650	31 959
<b>Deaths</b> .....	59 581	60 821	62 809	61 099	63 127	61 043	59 898	58 453	59 156	57 986	58 338
Men .....	30 085	30 542	31 273	30 536	31 267	30 388	29 526	28 989	28 793	28 262	28 404
Women .....	29 496	30 279	31 536	30 563	31 860	30 655	30 372	29 464	30 363	29 724	29 934
of whom under 1 year .....	471	444	367	380	353	376	351	309	281	358	320
Boys .....	268	261	210	219	200	219	188	161	169	209	164
Girls .....	203	183	157	161	153	157	163	148	112	149	156
<b>Natural increase<sup>■</sup></b> .....	4 777	6 905	4 560	8 567	6 644	6 595	7 738	7 717	7 076	9 095	7 112
<b>Net migration</b> .....	10 938	11 462	11 056	10 251	28 557	17 133	11 712	11 032	8 896	9 498	12 004
Immigration .....	43 567	43 377	43 400	44 961	63 187	54 445	50 105	51 372	50 236	52 915	55 984
Emigration .....	32 629	31 915	32 344	34 710	34 630	37 312	38 393	40 340	41 340	43 417	43 980
<b>Annual increase in population<sup>■</sup></b> .....	15 715	18 367	15 616	18 818	35 201	23 728	19 450	18 749	15 972	18 593	19 116
<i>Per thousand inhabitants</i>											
Births <sup>■</sup> .....	12.5	13.1	13.0	13.4	13.3	12.9	12.8	12.5	12.5	12.6	12.2
Deaths .....	11.5	11.8	12.1	11.7	12.1	11.6	11.3	11.0	11.1	10.9	10.9
Natural increase <sup>■</sup> .....	1.0	1.3	0.9	1.6	1.3	1.3	1.5	1.5	1.3	1.7	1.3
Net migration .....	2.1	2.2	2.1	2.0	5.5	3.3	2.2	2.1	1.7	1.8	2.2
Increase in population <sup>■</sup> .....	3.1	3.6	3.0	3.6	6.7	4.5	3.7	3.2	3.0	3.5	3.6

Note: Births<sup>■</sup> exclude still births<sup>■</sup>.

➤ New figures are expected to be published in June 2003.

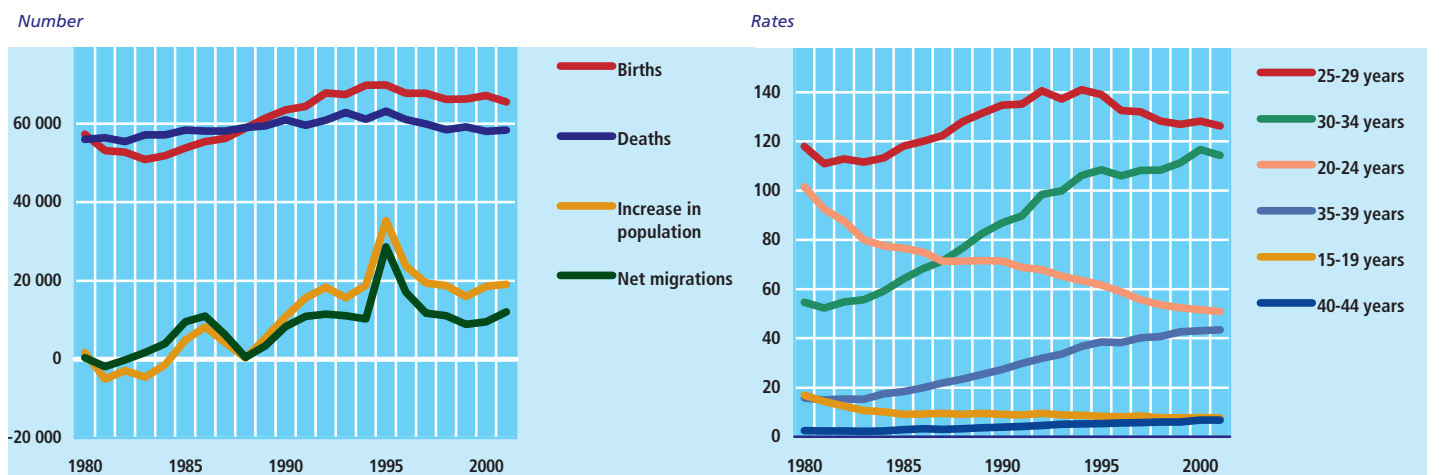
Age-specific fertility rates

	1991	1992	1993	1994	1995	1996	1997	1998	1999	2000	2001
<i>Live births<sup>■</sup> per thousand women</i>											
<b>Age of mother</b>											
15-19 years .....	8.8	9.5	8.8	8.7	8.3	8.0	8.4	7.7	7.7	7.8	7.6
20-24 years .....	68.8	67.9	65.2	63.4	61.6	58.9	55.7	53.6	52.4	51.7	50.9
25-29 years .....	135.2	140.6	137.3	141.0	139.1	132.6	132.1	128.3	126.9	128.3	126.2
30-34 years .....	89.7	98.4	99.8	106.2	108.5	106.1	108.2	108.4	111.3	116.7	114.3
35-39 years .....	29.8	31.8	33.5	36.6	38.5	38.2	40.2	40.6	42.6	43.0	43.4
40-44 years .....	4.2	4.5	5.0	5.2	5.3	5.6	5.7	5.9	6.0	6.7	6.7
45-49 years .....	0.1	0.2	0.1	0.2	0.2	0.2	0.2	0.2	0.2	0.2	0.2
<b>General fertility rate<sup>■</sup></b> .....	49.0	51.6	51.4	53.4	53.8	52.4	52.9	52.1	52.5	53.5	52.4
Total fertility <sup>■</sup> .....	1 683	1 764	1 749	1 806	1 807	1 747	1 752	1 724	1 735	1 771	1 746
Gross reproduction rate <sup>■</sup> .....	820	857	850	882	878	848	852	837	848	862	853
Net reproduction rate <sup>■</sup> .....	808	845	839	871	867	838	842	827	838	853	844

➤ New figures are expected to be published in June 2003.

Population trends

Age specific fertility rates



*Legal abortions*

	1973	1975	1980	1985	1990	1993	1994	1995	1996	1997	1998	1999	2000
Legal abortions <sup>a</sup> .....	16 536	27 884	23 334	19 919	20 589	18 687	17 598	17 720	18 135	17 152	16 592	16 271	15 681

<sup>a</sup> New figures are expected to be published in July 2003.

*Age-specific legal abortion rates*

	1988	1989	1990	1991	1992	1993	1994	1995	1996	1997	1998	1999	2000
<i>Legal abortions<sup>a</sup> per thousand women</i>													
<b>Age of woman</b>													
15-19 years .....	16.6	17.6	17.2	16.4	16.0	15.8	15.1	14.8	15.1	14.9	14.6	14.0	14.3
20-24 years .....	30.4	32.1	30.2	27.8	26.1	25.4	23.4	22.5	23.0	22.1	20.7	20.4	19.9
25-29 years .....	25.6	25.4	25.4	24.7	23.2	23.6	21.3	21.4	21.3	20.4	20.0	18.7	18.1
30-34 years .....	18.9	19.1	18.3	18.6	18.4	18.7	18.2	19.2	19.6	18.5	18.0	18.5	17.8
35-39 years .....	13.5	13.4	12.2	11.8	11.8	11.4	11.6	12.5	13.2	12.8	12.7	13.5	12.6
40-44 years .....	6.0	5.6	5.3	5.2	4.8	4.8	4.8	4.8	5.1	4.5	5.0	4.7	4.8
45-49 years .....	0.8	0.7	0.8	0.7	0.6	0.5	0.5	0.5	0.6	0.5	0.5	0.4	0.5
<b>General abortion rate<sup>1</sup></b> .....	<b>16.3</b>	<b>16.4</b>	<b>15.7</b>	<b>15.0</b>	<b>14.3</b>	<b>14.3</b>	<b>13.5</b>	<b>13.7</b>	<b>14.1</b>	<b>13.4</b>	<b>13.1</b>	<b>12.9</b>	<b>12.5</b>
<b>Total abortion rate<sup>a</sup></b> .....	<b>559</b>	<b>570</b>	<b>547</b>	<b>526</b>	<b>504</b>	<b>501</b>	<b>475</b>	<b>479</b>	<b>490</b>	<b>468</b>	<b>457</b>	<b>451</b>	<b>439</b>

<sup>1</sup> Legal abortions<sup>a</sup> per thousand women aged 15-49.

<sup>a</sup> New figures are expected to be published in July 2003.

*Marriages*

	1991	1992	1993	1994	1995	1996	1997	1998	1999	2000	2001
Marriages .....	31 099	32 188	31 638	35 321	34 736	35 953	34 244	34 733	35 439	38 388	36 567
Marriages per 1,000 unmarried men over 18 .....	32.3	33.2	32.1	35.7	34.9	35.8	33.9	34.3	35.5	38.3	36.5
Marriages per 1,000 unmarried women over 15 ...	26.9	27.7	26.9	30.1	29.3	30.1	28.5	28.8	30.3	32.4	30.9

<sup>a</sup> New figures are expected to be published in July 2003.

*Divorces*

	1991	1992	1993	1994	1995	1996	1997	1998	1999	2000	2001
Divorces .....	12 655	12 981	12 971	13 709	12 976	12 776	12 774	13 141	13 537	14 381	14 597
Divorces per 1,000 married men .....	11.4	11.6	11.7	12.3	11.7	11.4	11.4	11.7	12.4	13.2	13.3
Divorces per 1,000 married women .....	11.6	11.9	11.9	12.6	11.9	11.6	11.6	11.9	12.5	13.2	13.4

<sup>a</sup> New figures are expected to be published in July 2003.

*Divorces by duration of marriage*

	1960	1970	1980	1990	1995	1996	1997	1998	1999	2000	2001
<i>Number</i>											
<b>Total</b> .....	<b>6 682</b>	<b>9 524</b>	<b>13 593</b>	<b>13 731</b>	<b>12 976</b>	<b>12 776</b>	<b>12 774</b>	<b>13 141</b>	<b>13 537</b>	<b>14 381</b>	<b>14 597</b>
<i>Per cent</i>											
Under 1 year .....	2	2	2	2	2	2	2	2	2	2	2
1 year .....	4	4	4	5	4	5	5	5	4	5	5
2 years .....	7	7	7	8	6	6	6	7	6	6	6
3 years .....	8	8	7	8	9	8	8	8	8	8	8
4 years .....	9	9	7	7	7	8	7	8	8	8	8
5 years .....	8	8	7	6	7	7	7	7	7	7	7
6-7 years .....	12	13	10	9	12	12	12	11	11	12	12
8-9 years .....	8	9	8	7	9	9	9	9	9	9	9
10-14 years .....	17	14	19	14	14	14	15	16	16	17	17
15-19 years .....	11	10	12	11	10	10	9	10	10	9	10
20-24 years .....	7	8	8	11	9	8	8	8	7	7	7
25 years and over .....	7	8	8	11	11	11	11	11	10	10	10
Not stated .....	0	0	1	1	0	0	0	0	0	0	0

<sup>a</sup> New figures are expected to be published in July 2003.

Life expectancy <sup>■</sup>

Age	Men						Women					
	1990-91	1992-93	1994-95	1996-97	1998-99	2000-01	1990-91	1992-93	1994-95	1996-97	1998-99	2000-01
0 year	72.2	72.5	72.7	73.3	74.0	74.5	77.8	77.8	77.9	78.4	78.8	79.2
5 years	68.0	68.1	68.3	68.8	69.5	70.0	73.4	73.4	73.4	73.8	74.3	74.6
10 years	63.1	63.2	63.3	63.9	64.6	65.1	68.5	68.4	68.4	68.8	69.3	69.6
15 years	58.1	58.3	58.4	58.9	59.6	60.1	63.5	63.4	63.5	63.9	64.3	64.7
20 years	53.3	53.5	53.5	54.1	54.8	55.3	58.6	58.5	58.6	59.0	59.4	59.7
25 years	48.5	48.7	48.8	49.3	50.0	50.5	53.7	53.6	53.7	54.0	54.5	54.8
30 years	43.8	43.9	44.0	44.5	45.2	45.7	48.8	48.7	48.8	49.1	49.6	49.9
35 years	39.1	39.2	39.3	39.8	40.4	40.9	44.0	43.9	43.9	44.3	44.7	45.0
40 years	34.4	34.6	34.7	35.2	35.7	36.2	39.2	39.1	39.1	39.5	39.9	40.2
45 years	29.9	30.1	30.2	30.7	31.2	31.6	34.5	34.4	34.5	34.8	35.2	35.5
50 years	25.5	25.7	25.8	26.2	26.7	27.2	30.0	29.9	29.9	30.3	30.6	30.9
55 years	21.4	21.5	21.6	22.0	22.5	22.9	25.7	25.5	25.6	25.9	26.2	26.4
60 years	17.6	17.6	17.7	18.0	18.5	18.9	21.7	21.4	21.4	21.7	21.9	22.2
65 years	14.1	14.1	14.2	14.5	14.9	15.2	17.9	17.7	17.6	17.9	18.1	18.2
70 years	11.1	11.1	11.1	11.4	11.7	11.9	14.3	14.1	14.2	14.4	14.6	14.7
75 years	8.5	8.5	8.5	8.7	8.9	9.1	11.1	10.9	10.9	11.2	11.4	11.4
80 years	6.4	6.4	6.4	6.5	6.6	6.7	8.2	8.0	8.1	8.3	8.5	8.5
85 years	4.7	4.6	4.6	4.7	4.8	4.9	5.8	5.7	5.7	5.9	6.1	6.1
90 years	3.4	3.2	3.3	3.3	3.4	3.4	4.0	3.9	3.9	4.0	4.1	4.2
95 years	2.5	2.2	2.4	2.3	2.4	2.4	2.8	2.7	2.7	2.7	2.9	2.9

■ New figures are expected to be published in June 2003.

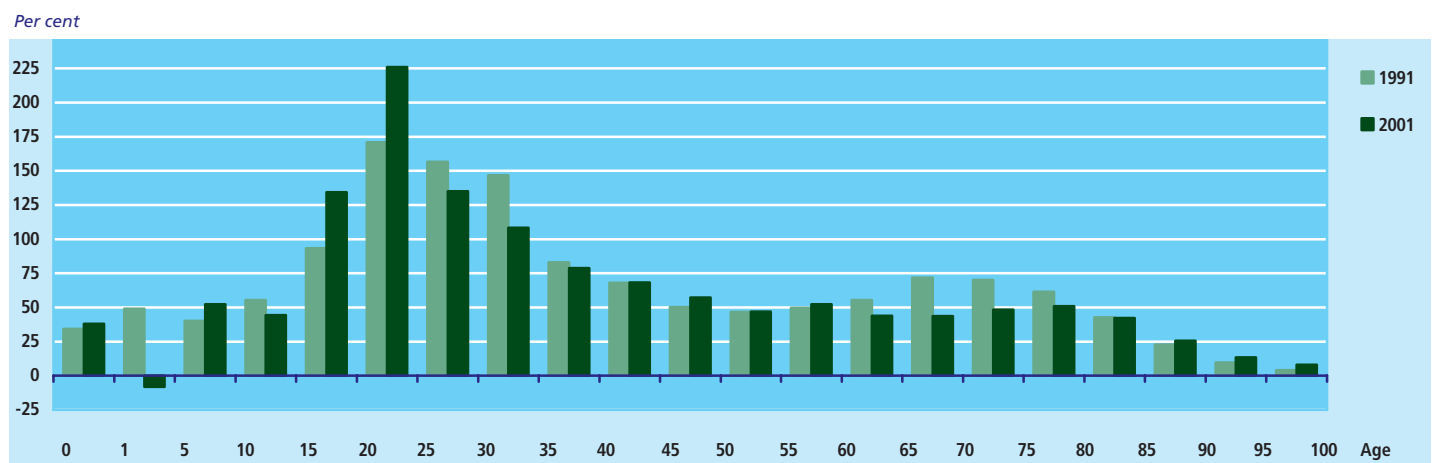
## Deaths per thousand inhabitants in each age group

	1991	1992	1993	1994	1995	1996	1997	1998	1999	2000	2001
<b>Men</b>	<b>11.84</b>	<b>11.98</b>	<b>12.22</b>	<b>11.89</b>	<b>12.12</b>	<b>11.70</b>	<b>11.32</b>	<b>11.07</b>	<b>10.95</b>	<b>10.71</b>	<b>10.73</b>
0 years <sup>1</sup>	8.12	7.50	6.07	6.14	5.57	6.29	5.47	4.73	4.99	6.07	4.90
1-19 years	0.40	0.38	0.36	0.33	0.38	0.33	0.35	0.32	0.29	0.28	0.28
20-39 years	1.40	1.32	1.36	1.37	1.36	1.24	1.19	1.10	1.10	1.03	1.04
40-49 years	3.58	3.62	3.64	3.75	3.58	3.67	3.55	3.42	3.23	3.27	3.11
50-59 years	9.37	9.04	8.78	8.68	8.33	8.36	7.72	7.58	7.67	7.56	7.72
60-69 years	24.62	25.10	25.18	24.73	24.82	23.74	22.55	22.35	20.66	19.74	19.18
70-79 years	59.77	60.00	61.79	58.98	61.39	59.52	57.16	55.41	54.73	53.68	52.89
80-89 years	133.69	135.18	139.79	136.23	140.03	134.83	133.67	131.38	132.57	126.34	128.11
90 years and over	287.18	308.01	319.80	291.81	315.39	307.25	304.40	286.35	299.00	288.38	287.62
<b>Women</b>	<b>11.28</b>	<b>11.55</b>	<b>11.99</b>	<b>11.59</b>	<b>12.03</b>	<b>11.51</b>	<b>11.36</b>	<b>10.98</b>	<b>11.28</b>	<b>11.01</b>	<b>11.05</b>
0 years <sup>1</sup>	6.47	5.56	4.79	4.73	4.52	4.78	5.05	4.61	3.46	4.56	4.88
1-19 years	0.22	0.22	0.23	0.21	0.20	0.21	0.16	0.17	0.16	0.16	0.17
20-39 years	0.61	0.63	0.59	0.59	0.65	0.59	0.54	0.52	0.53	0.49	0.49
40-49 years	2.30	2.25	2.35	2.43	2.39	2.29	2.30	2.05	2.11	1.96	2.00
50-59 years	6.21	6.14	6.10	5.85	5.82	5.40	5.40	5.01	5.13	5.02	5.06
60-69 years	15.07	15.21	15.72	15.41	16.13	15.45	15.07	14.74	14.37	13.92	13.10
70-79 years	35.17	35.43	37.05	35.56	36.54	35.62	35.19	35.05	35.29	34.71	34.44
80-89 years	93.27	95.39	98.76	94.66	98.12	93.99	93.53	87.89	92.76	88.99	89.00
90 years and over	240.73	249.21	255.29	242.19	256.84	247.16	237.01	229.29	239.36	230.53	237.97

<sup>1</sup> Per 1,000 live births<sup>■</sup>.

■ New figures are expected to be published in June 2003.

## Men's excess mortality compared with women's mortality




### Asylum applications lodged

	1991	1992	1993	1994	1995	1996	1997	1998	1999	2000	2001
Asylum applications lodged in Denmark .....	4 609	13 884	14 347	6 651	5 104	5 893	5 092	5 702	6 530	10 347	8 385
Asylum applications abroad .....	8 303	6 187	2 126	1 341	4 951	1 498	477	380	562	2 658	1 933

 New figures are expected to be published in May 2003.

### Permits granted in asylum cases

	1991	1992	1993	1994	1995	1996	1997	1998	1999	2000	2001
<b>Permits granted, total</b> .....	<b>21 652</b>	<b>21 397</b>	<b>17 613</b>	<b>20 268</b>	<b>37 879</b>	<b>32 332</b>	<b>29 505</b>	<b>31 034</b>	<b>29 260</b>	<b>34 881</b>	<b>38 592</b>
In asylum cases .....	4 014	3 807	3 424	2 818	20 347	8 717	5 925	4 758	4 458	5 156	6 264
Refugee status .....	3 505	3 683	3 246	2 508	19 931	6 387	4 940	4 442	4 238	4 388	5 742
Other status .....	509	124	178	310	416	2 330	985	316	220	768	522
Family unification .....	8 517	8 091	5 033	6 017	6 327	8 727	7 708	9 687	9 422	12 571	13 187
Marriage or cohabitation .....	5 874	5 215	3 570	4 436	4 580	6 112	5 665	6 442	6 637	6 399	6 499
Minors .....	2 120	2 214	1 257	1 425	1 631	2 429	1 843	3 004	2 585	5 934	6 422
Parents over 60 years .....	523	662	206	156	116	186	200	241	200	238	266
Permits granted according to EC rules .....	1 670	2 280	2 825	4 342	3 780	5 887	5 919	6 101	5 706	5 925	5 950
Permits granted for employment reasons .....	2 395	2 439	2 058	2 124	2 232	2 750	3 062	3 256	3 074	3 620	5 132
Permits granted for other reasons .....	5 056	4 780	4 273	4 967	5 193	6 251	6 891	7 232	6 600	7 609	8 059

 New figures are expected to be published in May 2003.

### Immigrants and descendants

	1992	1993	1994	1995	1996	1997	1998	1999	2000	2001	2002
<b>Immigrants<sup>■</sup> and descendants<sup>■</sup>, total</b> .....	<b>239 241</b>	<b>253 372</b>	<b>266 069</b>	<b>278 459</b>	<b>308 723</b>	<b>330 292</b>	<b>347 033</b>	<b>363 422</b>	<b>378 165</b>	<b>395 947</b>	<b>415 331</b>
From more developed countries <sup>■</sup> .....	119 552	122 220	125 188	128 836	149 415	158 383	163 714	167 841	170 919	174 518	178 517
From less developed countries <sup>■</sup> .....	119 689	131 152	140 881	149 623	159 308	171 909	183 319	195 581	207 246	221 429	236 814
Immigrants <sup>■</sup> .....	198 898	208 865	217 154	224 995	249 885	265 794	276 781	287 681	296 924	308 674	321 794
From more developed countries <sup>■</sup> .....	105 335	107 439	109 753	112 763	132 170	139 920	144 214	147 424	149 549	152 193	155 001
From less developed countries <sup>■</sup> .....	93 563	101 426	107 401	112 232	117 715	125 874	132 567	140 257	147 375	156 481	166 793
Descendants <sup>■</sup> .....	40 343	44 507	48 915	53 464	58 838	64 498	70 252	75 741	81 241	87 273	93 537
From more developed countries <sup>■</sup> .....	14 217	14 781	15 435	16 073	17 245	18 463	19 500	20 417	21 370	22 325	23 516
From less developed countries <sup>■</sup> .....	26 126	29 726	33 480	37 391	41 593	46 035	50 752	55 324	59 871	64 948	70 021

 New figures are expected to be published in February 2003.

### FACTS MAIN TERMS IN THE IMMIGRANT DEBATE

ASYLUM APPLICATIONS can be divided into *Asylum applications lodged in Denmark* and *asylum applications lodged abroad*.

- *Asylum applications lodged in Denmark* are from persons who are in Denmark already.
- *Asylum applications abroad* are from persons who are abroad.

RESIDENCE PERMITS are issued to all non-Nordic citizens to legally reside in Denmark for more than three months.

IMMIGRANTS are persons born abroad where both parents (or only one if there is no information on the other) are foreign nationals or born abroad. If there is no information on either parent, and the person was born abroad, then the person will be considered an immigrant.

DESCENDANTS are persons who were born in Denmark to parents, neither of whom were Danish citizens born in Denmark. If there is no information on either parent, and the person is a foreign national, then the person will be considered a descendant. Children of descendants are only categorized as descendants if both their parents have a foreign citizenship. Consequently, descendants will not generation by generation be categorized as descendants.

## Immigrants and their descendants as of 1 January by age

	1992	1993	1994	1995	1996	1997	1998	1999	2000	2001	2002
<b>Immigrants<sup>a</sup> and their descendants<sup>a</sup></b>											
Total .....	239 241	253 372	266 069	278 459	308 723	330 292	347 033	363 422	378 165	395 947	415 331
0-5 years .....	21 958	24 072	25 908	27 817	31 548	34 167	35 913	36 938	37 938	39 474	40 898
6-15 years .....	28 115	30 313	32 201	33 867	39 403	43 223	46 094	49 450	52 252	55 893	60 011
16-24 years .....	30 761	32 803	34 338	35 658	39 359	43 089	45 297	47 884	49 805	52 350	55 315
25-59 years .....	129 085	135 979	142 894	149 923	165 865	176 236	184 933	193 205	200 932	209 523	218 838
60-64 years .....	7 521	7 905	8 084	8 228	8 747	9 215	9 800	10 461	11 230	12 077	12 914
65 years and over .....	21 801	22 300	22 644	22 966	23 801	24 362	24 996	25 484	26 008	26 630	27 355
<b>Immigrants<sup>a</sup></b>											
Total .....	198 898	208 865	217 154	224 995	249 885	265 794	276 781	287 681	296 924	308 674	321 794
0-5 years .....	4 306	4 135	3 930	3 800	5 075	5 250	4 879	4 576	4 353	4 413	4 572
6-15 years .....	15 365	16 631	17 193	17 537	21 442	23 452	24 064	24 531	24 253	24 587	25 271
16-24 years .....	26 549	27 830	28 529	28 839	31 509	34 183	35 444	37 439	39 008	41 127	43 487
25-59 years .....	124 254	130 992	137 712	144 566	160 294	170 324	178 620	186 195	193 092	200 861	209 210
60-64 years .....	7 286	7 675	7 867	8 010	8 514	8 980	9 557	10 224	10 997	11 844	12 678
65 years and over .....	21 138	21 602	21 923	22 243	23 051	23 605	24 217	24 716	25 221	25 842	26 576
<b>Descendants<sup>a</sup></b>											
Total .....	40 343	44 507	48 915	53 464	58 838	64 498	70 252	75 741	81 241	87 273	93 537
0-5 years .....	17 652	19 937	21 978	24 017	26 473	28 917	31 034	32 362	33 585	35 061	36 326
6-15 years .....	12 750	13 682	15 008	16 330	17 961	19 771	22 030	24 919	27 999	31 306	34 740
16-24 years .....	4 212	4 973	5 809	6 819	7 850	8 906	9 853	10 445	10 797	11 223	11 828
25-59 years .....	4 831	4 987	5 182	5 357	5 571	5 912	6 313	7 010	7 840	8 662	9 628
60-64 years .....	235	230	217	218	233	235	243	237	233	233	236
65 years and over .....	663	698	721	723	750	757	779	768	787	788	779

<sup>a</sup> New figures are expected to be published in February 2003.

## Immigrants and their descendants as of 1 January by country of origin

	1992	1993	1994	1995	1996	1997	1998	1999	2000	2001	2002
<b>Immigrants<sup>a</sup> and their descendants<sup>a</sup></b>											
Total .....	239 241	253 372	266 069	278 459	308 723	330 292	347 033	363 422	378 165	395 947	415 331
More developed countries <sup>a</sup> .....	119 552	122 220	125 188	128 836	149 415	158 383	163 714	167 841	170 919	174 518	178 517
Of which: Yugoslavia (former) .....	11 950	12 600	13 047	13 534	30 675	35 377	37 418	38 588	39 879	41 227	42 694
Norway .....	13 190	13 223	13 237	13 447	13 605	13 929	14 177	14 405	14 648	14 915	14 999
Sweden .....	13 637	13 594	13 629	13 594	13 659	13 859	14 230	14 494	14 606	14 568	14 455
Germany .....	23 715	23 658	23 869	24 154	24 333	24 795	25 038	25 382	25 448	25 319	25 289
Less developed <sup>a</sup> .....	119 689	131 152	140 881	149 623	159 308	171 909	183 319	195 581	207 246	221 429	236 814
Of which: Iraq .....	3 393	4 570	5 585	6 415	7 521	8 816	10 327	12 751	14 902	18 097	21 555
Iran .....	10 033	10 525	10 908	11 157	11 358	11 874	12 264	12 712	12 980	13 391	13 625
Lebanon .....	11 381	13 074	14 205	15 110	15 957	16 857	17 634	18 368	19 011	19 839	20 566
Pakistan .....	13 160	13 806	14 237	14 692	15 229	15 827	16 353	16 969	17 509	18 143	18 623
Somalia .....	1 395	2 237	3 789	5 280	7 091	9 885	12 113	13 535	14 856	16 209	17 299
Turkey .....	34 078	36 256	37 901	39 222	40 936	43 087	45 008	46 994	48 773	50 470	52 159
<b>Immigrants<sup>a</sup></b>											
Total .....	198 898	208 865	217 154	224 995	249 885	265 794	276 781	287 681	296 924	308 674	321 794
More developed countries <sup>a</sup> .....	105 335	107 439	109 753	112 763	132 170	139 920	144 214	147 424	149 549	152 193	155 001
Of which: Yugoslavia (former) .....	8 958	9 369	9 572	9 846	26 232	30 177	31 567	32 199	32 868	33 579	34 261
Norway .....	11 767	11 798	11 789	11 960	12 103	12 409	12 645	12 851	13 095	13 360	13 425
Sweden .....	11 828	11 765	11 761	11 685	11 728	11 890	12 265	12 502	12 617	12 573	12 465
Germany .....	21 638	21 531	21 685	21 923	22 048	22 453	22 626	22 891	22 889	22 716	22 619
Less developed countries <sup>a</sup> .....	93 563	101 426	107 401	112 232	117 715	125 874	132 567	140 257	147 375	156 481	166 793
Of which: Iraq .....	3 121	4 179	5 064	5 688	6 562	7 557	8 730	10 791	12 476	15 099	17 959
Iran .....	9 351	9 705	9 927	10 036	10 090	10 453	10 686	10 969	11 112	11 348	11 425
Lebanon .....	9 522	10 543	10 945	11 091	11 181	11 341	11 474	11 629	11 742	11 924	12 012
Pakistan .....	8 134	8 426	8 570	8 736	8 941	9 173	9 400	9 693	9 942	10 313	10 487
Somalia .....	1 253	2 005	3 382	4 612	6 031	8 360	9 888	10 669	11 283	11 847	12 225
Turkey .....	23 141	24 072	24 542	24 868	25 488	26 533	27 270	28 207	29 039	29 680	30 362
<b>Descendants<sup>a</sup></b>											
Total .....	40 343	44 507	48 915	53 464	58 838	64 498	70 252	75 741	81 241	87 273	93 537
More developed countries <sup>a</sup> .....	14 217	14 781	15 435	16 073	17 245	18 463	19 500	20 417	21 370	22 325	23 516
Of which: Yugoslavia (former) .....	2 992	3 231	3 475	3 688	4 443	5 200	5 851	6 389	7 011	7 648	8 433
Norway .....	1 423	1 425	1 448	1 487	1 502	1 520	1 532	1 554	1 553	1 555	1 574
Sweden .....	1 809	1 829	1 868	1 909	1 931	1 969	1 965	1 992	1 989	1 995	1 990
Germany .....	2 077	2 127	2 184	2 231	2 285	2 342	2 412	2 491	2 559	2 603	2 670
Less developed countries <sup>a</sup> .....	26 126	29 726	33 480	37 391	41 593	46 035	50 752	55 324	59 871	64 948	70 021
Of which: Iraq .....	272	391	521	727	959	1 259	1 597	1 960	2 426	2 998	3 596
Iran .....	682	820	981	1 121	1 268	1 421	1 578	1 743	1 868	2 043	2 200
Lebanon .....	1 859	2 531	3 260	4 019	4 776	5 516	6 160	6 739	7 269	7 915	8 554
Pakistan .....	5 026	5 380	5 667	5 956	6 288	6 654	6 953	7 276	7 567	7 830	8 136
Somalia .....	142	232	407	668	1 060	1 525	2 225	2 866	3 573	4 362	5 074
Turkey .....	10 937	12 184	13 359	14 354	15 448	16 554	17 738	18 787	19 734	20 790	21 797

<sup>a</sup> New figures are expected to be published in February 2003.

### Immigrants<sup>a</sup> by country of last permanent residence

	1991	1992	1993	1994	1995	1996	1997	1998	1999	2000	2001
<b>Total</b> .....	<b>43 567</b>	<b>43 377</b>	<b>43 400</b>	<b>44 961</b>	<b>63 187</b>	<b>54 445</b>	<b>50 105</b>	<b>51 372</b>	<b>50 236</b>	<b>52 915</b>	<b>55 984</b>
Faroe Islands .....	1 314	1 578	2 395	2 808	1 969	1 507	1 406	1 380	1 188	1 116	971
Greenland .....	3 065	2 959	2 509	2 372	2 601	2 741	2 796	2 892	2 819	2 688	2 688
<b>From abroad, total</b> .....	<b>39 188</b>	<b>38 840</b>	<b>38 496</b>	<b>39 781</b>	<b>58 617</b>	<b>50 197</b>	<b>45 903</b>	<b>47 100</b>	<b>46 229</b>	<b>49 111</b>	<b>52 325</b>
<b>Europe</b> .....	<b>22 473</b>	<b>21 958</b>	<b>22 777</b>	<b>25 042</b>	<b>42 413</b>	<b>31 932</b>	<b>28 279</b>	<b>27 834</b>	<b>27 330</b>	<b>28 240</b>	<b>29 948</b>
of whom: Norway .....	2 520	2 343	2 317	2 789	2 865	2 788	2 841	2 852	3 188	3 263	3 294
United Kingdom .....	3 672	3 695	3 712	3 931	3 880	3 809	3 934	4 028	3 965	3 824	3 913
Sweden .....	3 014	2 499	2 327	2 358	2 608	2 780	2 672	2 570	2 298	2 232	2 389
Turkey .....	1 986	1 362	887	791	1 074	1 480	1 153	1 377	1 352	1 303	1 328
Germany .....	2 425	2 741	3 678	4 036	3 977	4 119	3 795	3 759	3 530	3 499	3 989
<b>Africa</b> .....	<b>2 851</b>	<b>2 743</b>	<b>3 318</b>	<b>3 422</b>	<b>3 660</b>	<b>4 918</b>	<b>4 103</b>	<b>3 773</b>	<b>3 313</b>	<b>3 033</b>	<b>3 101</b>
of whom: Somalia .....	583	700	1 264	1 036	1 259	2 012	1 508	1 010	583	430	471
<b>North America</b> .....	<b>4 131</b>	<b>3 944</b>	<b>3 962</b>	<b>3 873</b>	<b>3 923</b>	<b>3 849</b>	<b>3 903</b>	<b>4 092</b>	<b>4 027</b>	<b>3 894</b>	<b>3 928</b>
<b>South and Central America</b> .....	<b>972</b>	<b>918</b>	<b>928</b>	<b>948</b>	<b>1 083</b>	<b>1 149</b>	<b>1 166</b>	<b>1 235</b>	<b>1 355</b>	<b>1 383</b>	<b>1 320</b>
<b>Asia</b> .....	<b>7 244</b>	<b>7 929</b>	<b>6 247</b>	<b>5 212</b>	<b>6 025</b>	<b>6 815</b>	<b>6 878</b>	<b>8 559</b>	<b>7 387</b>	<b>9 161</b>	<b>10 234</b>
of whom: Iraq .....	443	1 055	782	534	738	1 024	962	1 913	899	1 377	1 415
Iran .....	781	560	400	304	261	375	357	374	342	601	704
Thailand .....	518	524	504	523	563	618	662	709	809	859	955
<b>Oceania</b> .....	<b>1 077</b>	<b>929</b>	<b>900</b>	<b>858</b>	<b>930</b>	<b>969</b>	<b>1 015</b>	<b>1 109</b>	<b>997</b>	<b>1 085</b>	<b>1 063</b>
<b>Stateless and not stated</b> .....	<b>440</b>	<b>419</b>	<b>364</b>	<b>426</b>	<b>583</b>	<b>565</b>	<b>559</b>	<b>498</b>	<b>1 820</b>	<b>2 315</b>	<b>2 731</b>

<sup>a</sup> New figures are expected to be published in February 2003.

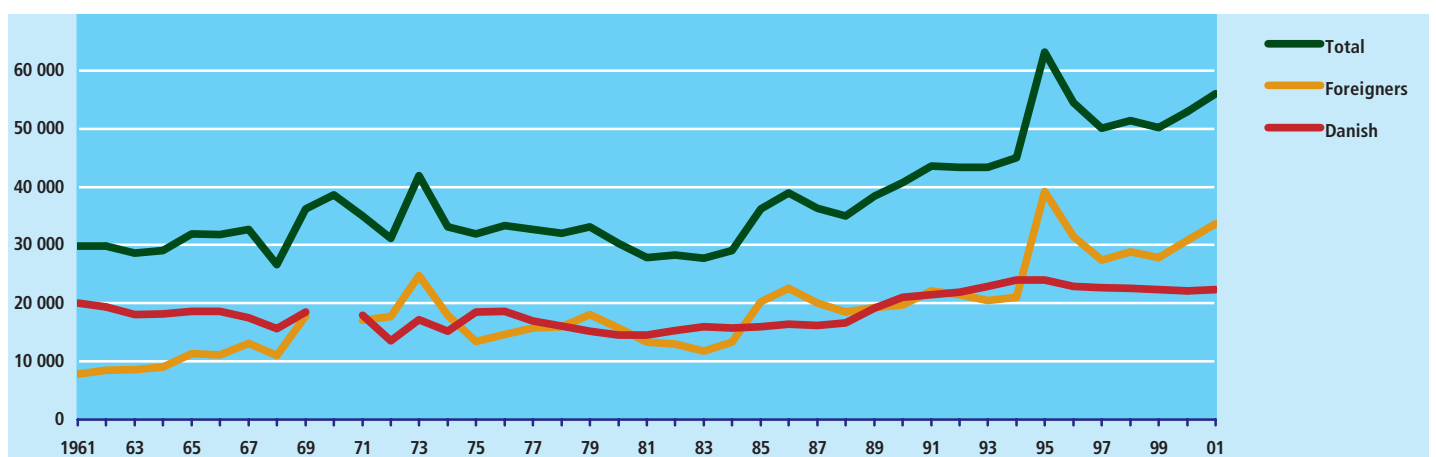
### Immigration and emigration by nationality and sex

	1991	1992	1993	1994	1995	1996	1997	1998	1999	2000	2001
<b>Net migration</b> .....	<b>10 938</b>	<b>11 462</b>	<b>11 056</b>	<b>10 251</b>	<b>28 557</b>	<b>17 133</b>	<b>11 712</b>	<b>11 032</b>	<b>8 896</b>	<b>9 498</b>	<b>12 004</b>
<b>Immigrants<sup>a</sup> total</b> .....	<b>43 567</b>	<b>43 377</b>	<b>43 400</b>	<b>44 961</b>	<b>63 187</b>	<b>54 445</b>	<b>50 105</b>	<b>51 372</b>	<b>50 236</b>	<b>52 915</b>	<b>55 984</b>
<b>Danish citizens</b> .....	<b>21 445</b>	<b>21 893</b>	<b>22 921</b>	<b>23 984</b>	<b>24 041</b>	<b>22 918</b>	<b>22 694</b>	<b>22 542</b>	<b>22 353</b>	<b>22 105</b>	<b>22 330</b>
Men .....	10 425	10 663	10 985	11 560	11 664	11 398	11 239	11 123	11 069	10 963	11 150
Women .....	11 020	11 230	11 936	12 424	12 377	11 520	11 455	11 419	11 284	11 142	11 180
<b>Foreign nationals</b> .....	<b>22 122</b>	<b>21 484</b>	<b>20 479</b>	<b>20 977</b>	<b>39 146</b>	<b>31 527</b>	<b>27 411</b>	<b>28 830</b>	<b>27 883</b>	<b>30 810</b>	<b>33 654</b>
Men .....	11 259	11 053	10 561	10 877	20 310	15 972	13 767	14 515	13 653	15 306	16 693
Women .....	10 863	10 431	9 918	10 100	18 836	15 555	13 644	14 315	14 230	15 504	16 961
<b>Emigrants<sup>a</sup> total</b> .....	<b>32 629</b>	<b>31 915</b>	<b>32 344</b>	<b>34 710</b>	<b>34 630</b>	<b>37 312</b>	<b>38 393</b>	<b>40 340</b>	<b>41 340</b>	<b>43 417</b>	<b>43 980</b>
<b>Danish citizens</b> .....	<b>22 167</b>	<b>22 557</b>	<b>22 350</b>	<b>23 819</b>	<b>23 521</b>	<b>24 355</b>	<b>24 336</b>	<b>24 693</b>	<b>25 098</b>	<b>26 887</b>	<b>26 688</b>
Men .....	10 641	10 766	10 688	11 742	11 699	12 265	12 095	12 429	12 762	13 864	13 983
Women .....	11 526	11 791	11 662	12 077	11 822	12 090	12 241	12 264	12 336	13 023	12 705
<b>Foreign nationals</b> .....	<b>10 462</b>	<b>9 358</b>	<b>9 994</b>	<b>10 891</b>	<b>11 109</b>	<b>12 957</b>	<b>14 057</b>	<b>15 647</b>	<b>16 242</b>	<b>16 530</b>	<b>17 292</b>
Men .....	5 815	5 140	5 631	6 021	6 077	7 037	7 562	8 469	8 646	8 717	9 053
Women .....	4 647	4 218	4 363	4 870	5 032	5 920	6 495	7 178	7 596	7 813	8 239

<sup>a</sup> New figures are expected to be published in February 2003.

### Immigration by Danish citizens and foreign nationals

Persons




Note: No figures on foreign immigrants for 1968-70. No figures on Danish immigrants for 1970.



### Families by family type as of 1 January

	1992	1993	1994	1995	1996	1997	1998	1999	2000	2001	2002
<b>Families<sup>■</sup> total</b> .....	<b>2 815 723</b>	<b>2 832 553</b>	<b>2 849 341</b>	<b>2 858 267</b>	<b>2 869 899</b>	<b>2 879 692</b>	<b>2 884 904</b>	<b>2 886 203</b>	<b>2 885 417</b>	<b>2 885 212</b>	<b>2 887 329</b>
<b>Families<sup>■</sup> without children</b> .....	<b>2 149 824</b>	<b>2 170 390</b>	<b>2 192 376</b>	<b>2 202 949</b>	<b>2 211 105</b>	<b>2 220 753</b>	<b>2 225 971</b>	<b>2 226 272</b>	<b>2 221 932</b>	<b>2 216 663</b>	<b>2 212 722</b>
Single persons <sup>■</sup> .....	1 407 615	1 421 531	1 436 491	1 441 337	1 444 514	1 449 353	1 449 314	1 443 889	1 436 974	1 429 882	1 426 714
Men .....	697 312	705 581	714 139	717 225	720 005	722 841	723 046	719 635	716 473	713 538	712 954
Women .....	710 303	715 950	722 352	724 112	724 509	726 512	726 268	724 254	720 501	716 344	713 760
Married couples .....	586 218	591 045	595 475	598 728	601 679	605 789	608 433	610 741	611 168	611 721	610 164
Other couples .....	155 991	157 814	160 410	162 884	164 912	165 611	168 224	171 642	173 790	175 060	175 844
Registered partnerships .....	810	940	1 029	1 132	1 227	1 342	1 425	1 529	1 653	1 772	1 900
Couples in consensual union <sup>■</sup> ..	1 789	2 300	2 824	3 400	3 939	4 574	5 183	5 807	6 386	6 994	7 564
Cohabiting couples <sup>■</sup> .....	153 392	154 574	156 557	158 352	159 746	159 695	161 616	164 306	165 751	166 294	166 380
<b>Families<sup>■</sup> with children</b> .....	<b>651 349</b>	<b>647 938</b>	<b>642 848</b>	<b>641 170</b>	<b>644 444</b>	<b>644 556</b>	<b>644 258</b>	<b>645 119</b>	<b>648 157</b>	<b>652 630</b>	<b>658 113</b>
Single persons <sup>■</sup> .....	118 072	119 221	119 570	119 535	119 450	119 372	118 910	117 804	118 560	120 042	123 079
Men .....	15 745	15 526	15 207	15 035	14 609	14 589	14 788	14 931	15 244	15 840	16 399
Women .....	102 327	103 695	104 363	104 500	104 841	104 783	104 122	102 873	103 316	104 202	106 680
Married couples .....	430 216	422 374	413 745	410 883	411 957	411 432	410 373	410 960	412 704	414 657	416 611
Other couples .....	103 061	106 343	109 533	110 752	113 037	113 752	114 975	116 355	116 893	117 931	118 423
Registered partnerships .....	41	46	49	59	81	91	106	150	176	220	266
Couples in consensual union <sup>■</sup> ..	81 598	85 274	88 803	90 612	92 915	93 841	95 116	96 050	95 525	95 546	94 986
Cohabiting couples <sup>■</sup> .....	21 422	21 023	20 681	20 081	20 041	19 820	19 753	20 155	21 192	22 165	23 171
<b>Childr. not liv. with parents</b> ....	<b>14 550</b>	<b>14 225</b>	<b>14 117</b>	<b>14 148</b>	<b>14 350</b>	<b>14 383</b>	<b>14 675</b>	<b>14 812</b>	<b>15 328</b>	<b>15 919</b>	<b>16 494</b>

Note: A family<sup>■</sup> comprises all persons who live at the same address and who are related in specific ways by marriage, decent etc.  New figures are expected to be published in March 2003.

### Households by household composition as of 1 January

	1992	1993	1994	1995	1996	1997	1998	1999	2000	2001	2002
<b>Households<sup>■</sup> total</b> .....	<b>2 309 177</b>	<b>2 324 865</b>	<b>2 338 868</b>	<b>2 357 615</b>	<b>2 374 055</b>	<b>2 391 547</b>	<b>2 407 010</b>	<b>2 423 208</b>	<b>2 434 112</b>	<b>2 444 467</b>	<b>2 456 106</b>
<b>Households<sup>■</sup> with 1 family<sup>■</sup> total</b> .....	<b>1 957 576</b>	<b>1 971 347</b>	<b>1 982 322</b>	<b>2 006 257</b>	<b>2 026 544</b>	<b>2 047 411</b>	<b>2 069 023</b>	<b>2 094 718</b>	<b>2 114 139</b>	<b>2 132 519</b>	<b>2 150 444</b>
Single persons <sup>■</sup> with/without children .....	902 133	914 995	926 071	942 286	952 998	965 710	977 082	988 632	996 380	1 003 829	1 014 303
Men .....	353 361	361 129	367 306	376 125	382 280	389 592	397 006	405 207	411 279	416 870	423 400
Women .....	548 772	553 866	558 765	566 161	570 718	576 118	580 076	583 425	585 101	586 959	590 903
Married couples with/without children .....	804 593	801 155	796 074	800 739	806 345	813 683	820 351	829 903	839 126	847 986	854 099
Other couples with/without children .....	249 709	254 062	259 133	262 146	266 053	267 009	270 591	275 198	277 651	279 757	281 035
Children not living with their parents .....	1 141	1 135	1 044	1 086	1 148	1 009	999	985	982	947	1 007
<b>Households<sup>■</sup> with more than 1 family<sup>■</sup></b> .....	<b>351 601</b>	<b>353 518</b>	<b>356 546</b>	<b>351 358</b>	<b>347 511</b>	<b>344 136</b>	<b>337 987</b>	<b>328 490</b>	<b>319 973</b>	<b>311 948</b>	<b>305 662</b>
A family <sup>■</sup> with adult children living											
with parents .....	192 921	195 767	199 262	196 485	194 393	192 826	190 130	185 022	178 414	172 459	167 215
Other households with more than 1 family <sup>■</sup> ....	158 680	157 751	157 284	154 873	153 118	151 310	147 857	143 468	141 559	139 489	138 447

Note: A household<sup>■</sup> comprises all persons living at the same address.  New figures are expected to be published in March 2003.

### Households by number of persons as of 1 January

	1992	1993	1994	1995	1996	1997	1998	1999	2000	2001	2002
<b>Households<sup>■</sup> total</b> .....	<b>2 309 177</b>	<b>2 324 865</b>	<b>2 338 868</b>	<b>2 357 615</b>	<b>2 374 055</b>	<b>2 391 547</b>	<b>2 407 010</b>	<b>2 423 208</b>	<b>2 434 112</b>	<b>2 444 467</b>	<b>2 456 106</b>
1 person .....	808 062	819 809	830 368	846 170	857 134	869 578	880 868	893 282	900 145	906 017	913 889
2 persons .....	757 251	762 908	768 491	774 706	779 308	784 180	791 641	799 501	806 288	812 330	816 265
3 persons .....	338 827	337 869	335 740	332 974	329 763	327 516	322 016	315 825	310 605	306 218	303 544
4 persons .....	292 981	290 922	289 445	287 113	287 894	287 395	287 566	287 780	287 822	288 559	289 202
5 persons .....	82 339	82 975	84 037	85 079	87 225	89 169	90 896	92 322	94 096	95 758	96 822
6 persons and over .....	29 717	30 382	30 787	31 573	32 731	33 709	34 023	34 498	35 156	35 585	36 384

Note: A household<sup>■</sup> comprises all persons living at the same address.  New figures are expected to be published in March 2003.

### Internal migrations by type of migration

	1991	1992	1993	1994	1995	1996	1997	1998	1999	2000	2001	1991	2001
												Per cent	
Migrations, total .....	854 344	855 125	872 223	906 394	909 476	908 401	900 513	881 905	866 363	857 633	848 154	100.0	100.0
Within municipalities .....	543 535	547 141	562 955	580 414	575 628	573 965	568 939	555 166	544 170	535 844	528 465	63.6	62.3
Between municipalities .....	310 809	307 984	309 268	325 980	333 848	334 436	331 574	326 739	322 193	321 789	319 689	36.4	37.7
Of which: between counties .....	186 016	185 326	187 955	196 619	200 350	198 432	195 634	193 564	191 198	193 167	191 931	21.8	22.6

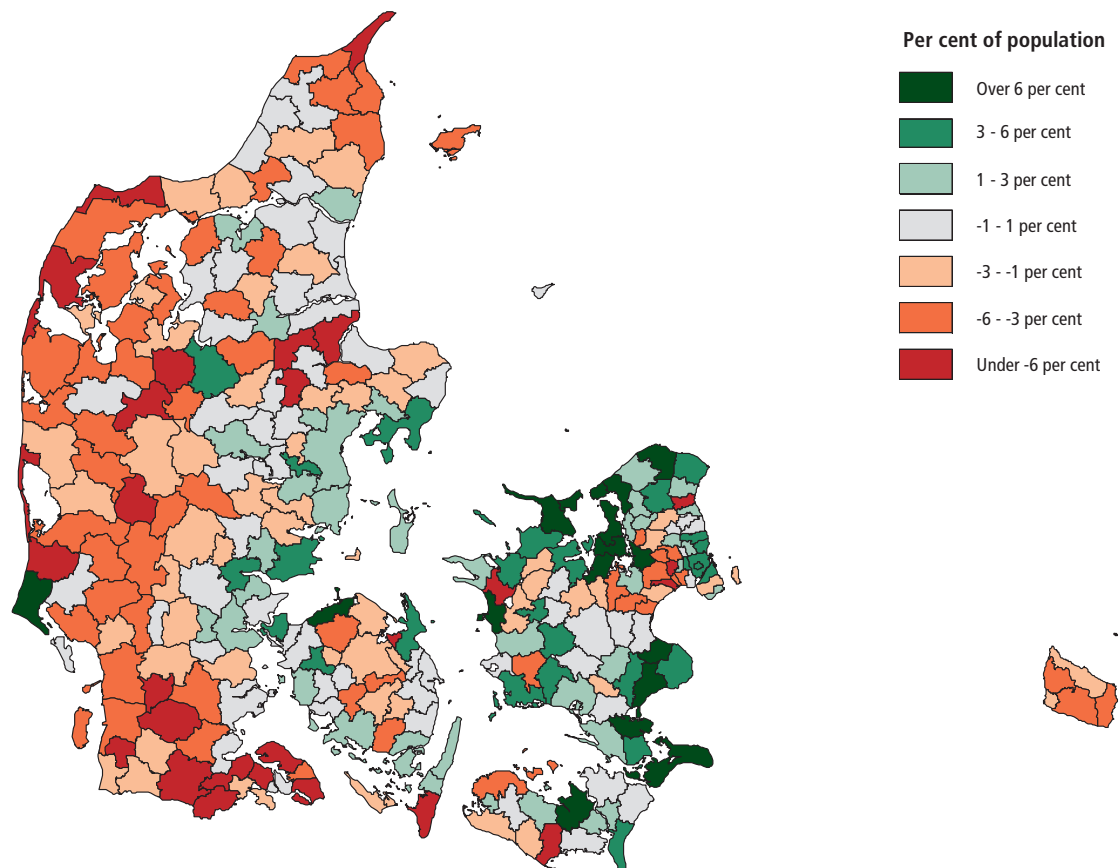
New figures are expected to be published in March 2003.

### Internal migrations by sex and age

	1991	1992	1993	1994	1995	1996	1997	1998	1999	2000	2001	1991	2001
												Per cent	
<b>Total</b> .....	854 344	855 125	872 223	906 394	909 476	908 401	900 513	881 905	866 363	857 633	848 154	100.0	100.0
<b>Men, total</b> .....	442 863	444 424	453 138	468 805	470 284	471 571	467 846	457 597	448 045	442 868	435 362	100.0	100.0
0-14 years .....	61 702	61 857	63 226	69 248	72 474	73 712	73 104	72 162	70 702	69 998	70 239	13.9	16.1
15-24 years .....	143 960	140 036	139 958	139 449	134 473	131 664	125 896	122 507	118 872	116 319	112 462	32.5	25.8
25-49 years .....	194 595	199 507	205 126	213 214	216 072	217 207	217 930	213 363	208 533	206 797	202 543	43.9	46.5
50-69 years .....	30 401	30 802	32 093	33 619	33 993	35 394	36 950	36 313	36 146	36 220	36 417	6.9	8.4
70 years and over .....	12 205	12 222	12 735	13 275	13 272	13 594	13 966	13 252	13 792	13 534	13 701	2.8	3.1
<b>Women, total</b> .....	411 481	410 701	419 085	437 589	439 192	436 830	432 667	424 308	418 318	414 765	412 792	100.0	100.0
0-14 years .....	59 631	59 553	61 036	66 643	69 050	70 487	69 253	68 329	67 291	66 962	67 265	14.5	16.3
15-24 years .....	158 947	154 907	154 263	155 640	151 297	146 002	141 572	138 069	135 178	132 437	128 585	38.6	31.2
25-49 years .....	143 802	146 790	152 150	161 058	164 030	163 906	163 816	161 599	159 130	159 224	159 995	34.9	38.8
50-69 years .....	28 815	28 846	30 110	31 902	31 826	33 411	34 463	34 159	33 698	33 762	34 306	7.0	8.3
70 years and over .....	20 286	20 605	21 526	22 346	22 989	23 024	23 563	22 152	23 021	22 380	22 641	4.9	5.5

New figures are expected to be published in March 2003.

### Migration by municipalities 1991-2001



© Kort & Matrikelstyrelsen (G. 5-00)

Net migrations 1991-2001 in per cent of population on 1 January 2001, by municipalities.

Note: A negative percentage rate indicates that more persons moved from than to the municipality over the last 10 years.